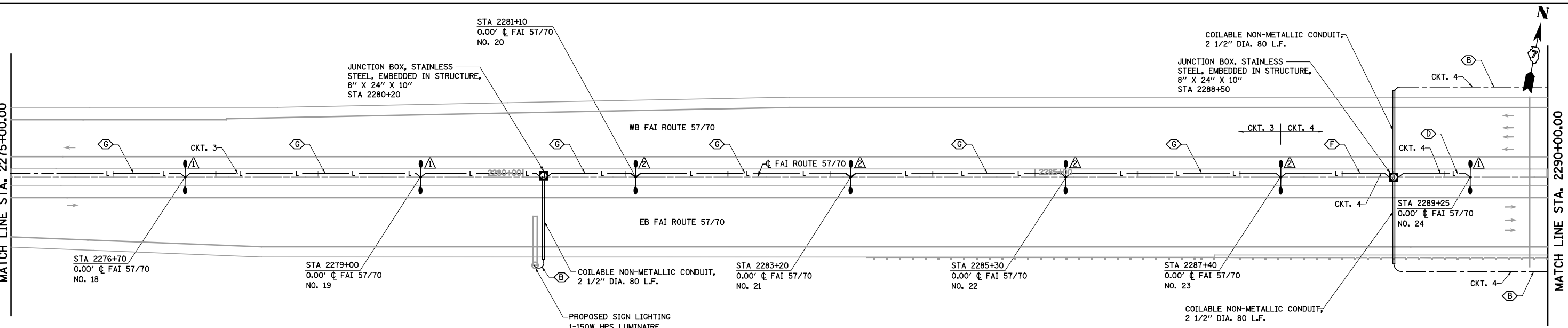


NOTES:
1. SPLICE NEW CABLE TO EXISTING IN JUNCTION BOX EMBEDDED IN MEDIAN BARRIER WALL

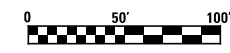


LEGEND

- EXISTING LIGHTING UNIT, TWIN
- PROPOSED LIGHTING UNIT, 45 FT ALUMINUM POLE, TWIN 8 FT DAVIT ARM, (2) 400W HPS LUMINAIRES, M-C-3
- PROPOSED LIGHTING UNIT, 50 FT ALUMINUM POLE, 15 FT DAVIT ARM, 400W HPS LUMINAIRE, M-C-3
- EXISTING LIGHTING CONTROLLER
- PROPOSED LIGHTING CONTROLLER
- SERVICE INSTALLATION
- COMBINATION LIGHTING UNIT, 45 FT MH, 15 FT MAST ARM, 400 HPS LUMINAIRE, PHOTO-CELL CONTROL, M-C-3
- PROPOSED LIGHTING UNIT, 50 FT ALUMINUM POLE, TWIN 15 FT DAVIT ARM, (2) 400W HPS LUMINAIRES, M-C-3
- JUNCTION BOX, STAINLESS STEEL, ATTACHED TO STRUCTURE OR EMBEDDED IN STRUCTURE, SIZE AS NOTED
- PROPOSED UNIT DUCT, SIZE AS NOTED
- PROPOSED ELECTRIC CABLE IN CONDUIT, SIZE AS NOTED
- PROPOSED UNDERGROUND COILABLE NON-METALLIC CONDUIT, SIZE AS NOTED
- EXISTING UNIT DUCT OR CABLE IN CONDUIT

CABLE / CONDUIT SCHEDULE

- UNIT DUCT, 600V, 2-1C NO. 8, 1/C NO. 8 GROUND, (XLP-TYPE USE), 3/4" DIA. POLYETHYLENE
- UNIT DUCT, 600V, 2-1C NO. 6, 1/C NO. 8 GROUND, (XLP-TYPE USE), 1" DIA. POLYETHYLENE
- UNIT DUCT, 600V, 2-1C NO. 4, 1/C NO. 6 GROUND, (XLP-TYPE USE), 1" DIA. POLYETHYLENE
- ELECTRIC CABLE IN CONDUIT, 600V, (XLP-TYPE USE), 2-1C NO. 8, 1/C NO. 8 GROUND IN 2" DIA. PVC CONDUIT EMBEDDED IN STRUCTURE
- ELECTRIC CABLE IN CONDUIT, 600V, (XLP-TYPE USE), 2-1C NO. 6, 1/C NO. 8 GROUND IN 2" DIA. PVC CONDUIT EMBEDDED IN STRUCTURE
- ELECTRIC CABLE IN CONDUIT, 600V, (XLP-TYPE USE), 2-1C NO. 4, 1/C NO. 6 GROUND IN 2" DIA. PVC CONDUIT EMBEDDED IN STRUCTURE
- ELECTRIC CABLE IN CONDUIT, 600V, (XLP-TYPE USE), 2-1C NO. 6, 2-1/C NO. 4, 1/C NO. 6 GROUND IN 2" DIA. PVC CONDUIT EMBEDDED IN STRUCTURE
- UNIT DUCT, 600V, 2-1C NO. 2, 1/C NO. 4 GROUND, (XLP-TYPE USE), 1 1/4" DIA. POLYETHYLENE
- LIGHT POLE FOUNDATION
- LIGHT POLE FOUNDATION (SPECIAL)



FILE NAME =	USER NAME = *USER*	DESIGNED - JWS	REVISED -	STATE OF ILLINOIS DEPARTMENT OF TRANSPORTATION	PROPOSED LIGHTING, NORTH TRI LEVEL	F.A.I. RTE.	SECTION	COUNTY	TOTAL SHEETS	SHEET NO.
SA\Projects\03-00072-57-70.dgn\Lighting.Prop.mxd		DRAWN - PDB	REVISED -			57/70	(25-4)R	EFFINGHAM	1760	459
		CHECKED - BRM	REVISED -			CONTRACT NO. 74295				
		DATE - 11-02-12	REVISED -			ILLINOIS FED. AID PROJECT				