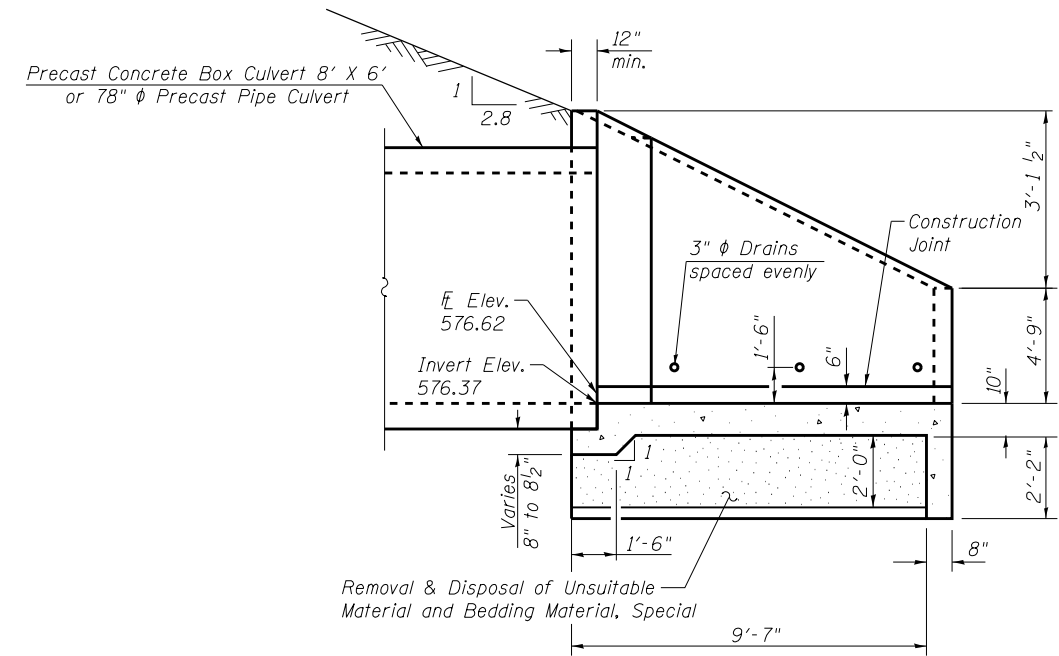
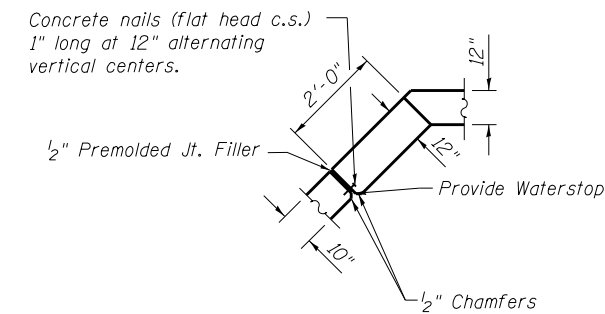


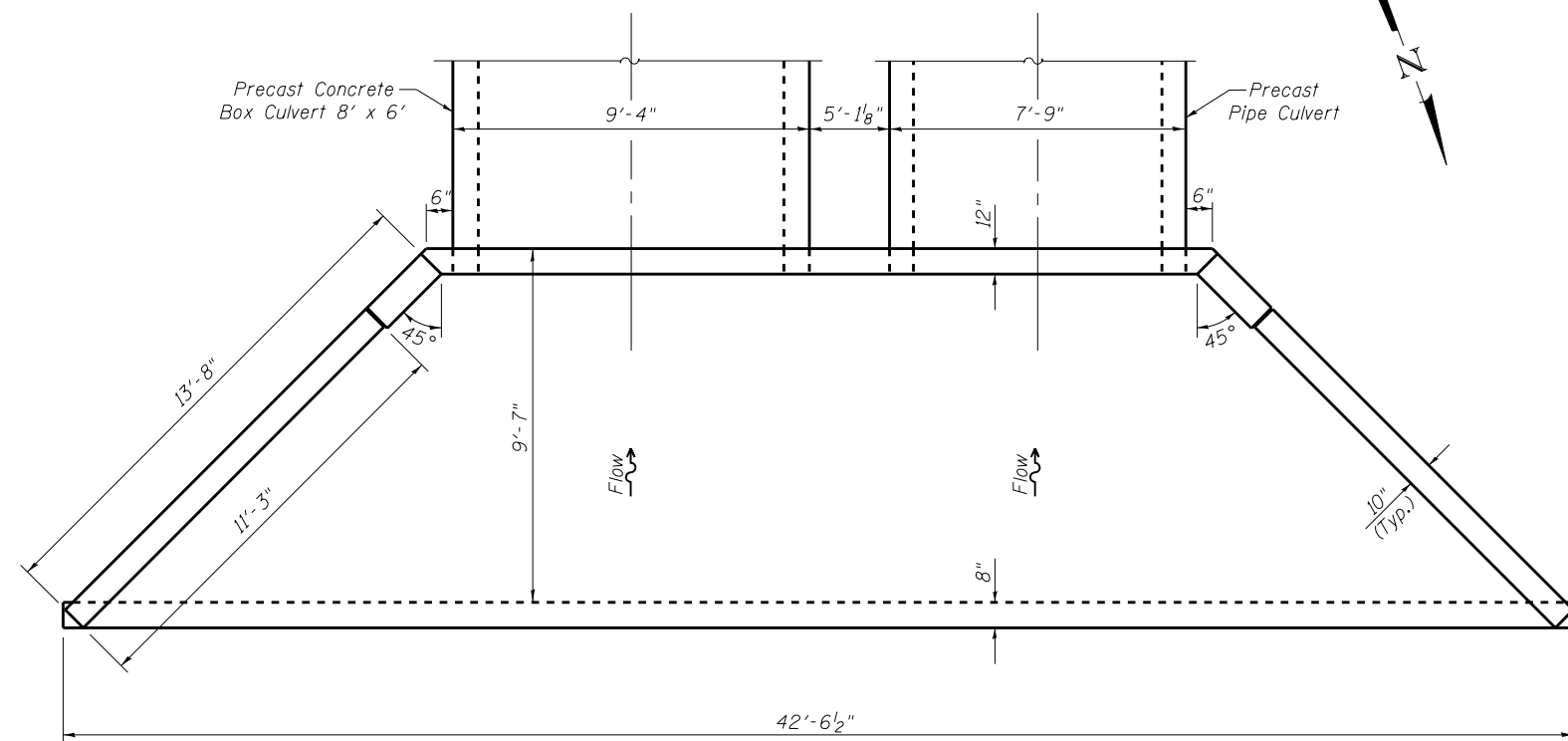
**END ELEVATION**  
 Calculated Max. Soil Pressure  
 under Box Culvert End Section = 130 psf



**SECTION THRU END SECTION**



**CORNER DETAIL**



**PLAN**

**GENERAL NOTES**

The depth of Removal and Replacement of Unsuitable Material and Bedding Material, Special as shown on the plans is estimated.  
 The verification of allowable soil bearing pressure underlying the proposed Cast-In-Place Reinforced Concrete End Section shall be verified by a dynamic cone penetration (DCP) test or other acceptable measures as provided by the District Geotechnical and Field Engineers. The results of the test must exceed the calculated bearing pressures shown on the plans prior to placement of the End Section or Bedding Material, Special. Tests failing to exceed the calculated bearing pressures as shown on the plans will require subsurface modification that must be coordinated with the District Geotechnical and Field Engineers.

S:\Projects\403-00072\_57-70\Bridges\Culverts\US 45\Culverts\US 45.dgn

FILE NAME = US 45.dgn	USER NAME =	DESIGNED - ACS	REVISED -	<b>STATE OF ILLINOIS DEPARTMENT OF TRANSPORTATION</b>	<b>CULVERT END SECTION, RT. STA. 24 + 70.29 US ROUTE 45 - RAMPS A &amp; B</b>	F.A.I. RTE.	SECTION	COUNTY	TOTAL SHEETS	SHEET NO.
BERNHARDEN LOCHMUELLER & ASSOCIATES, INC. 3 OAK DRIVE MARYVILLE, IL 62442 PHONE (618) 281-4666 FAX (618) 288-4666	Illinois Design Firm Number 184.001670	CHECKED - BB	REVISED -			57/70	(25-4)R	EFFINGHAM	1760	513
PLOT SCALE =	DRAWN - WJS	REVISIED -	REVISIED -			CONTRACT NO. 74295				
PLOT DATE = 3:54:16 PM 5/11/2013	CHECKED - CJF	REVISIED -	REVISIED -			SHEET NO. 2 OF 8 SHEETS				
						ILLINOIS FED. AID PROJECT				