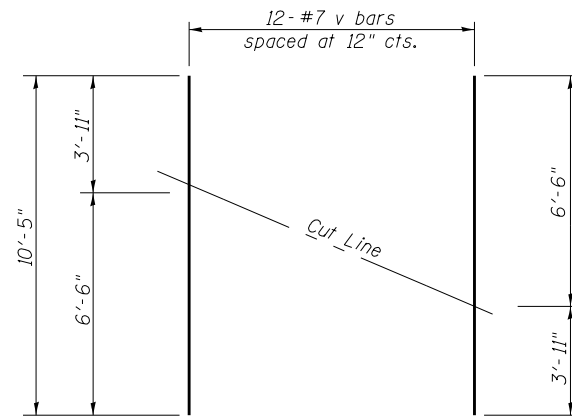
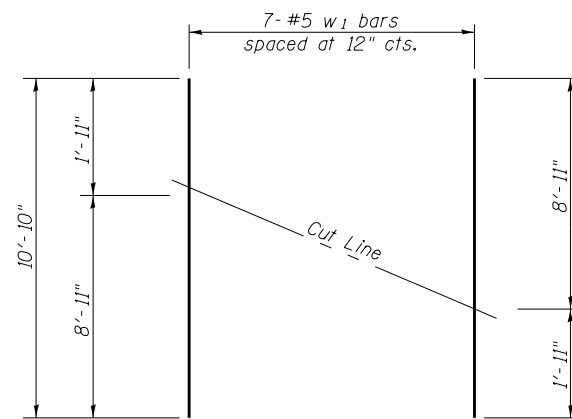


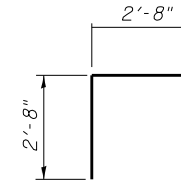
FIELD CUTTING DIAGRAM
(b_1 bars)



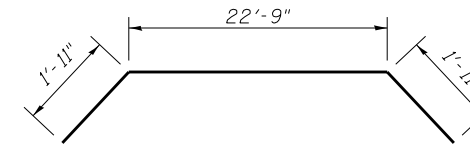
FIELD CUTTING DIAGRAM
(v bars)



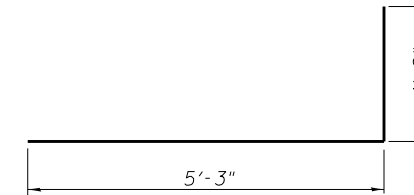
FIELD CUTTING DIAGRAM
(w_1 bars)



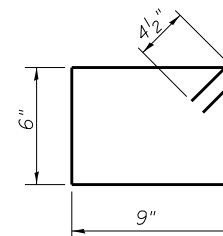
BAR d



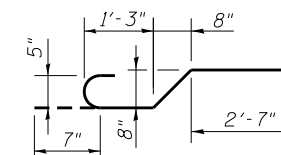
BAR h
(Bend in Field)



BAR $v_2(E)$



BAR s



BAR z

**CAST-IN-PLACE REINFORCED
CONCRETE CULVERT END SECTION**

Bar	No.	Size	Length	Shape
b	18	#5	17'-6"	—
b_1	9	#5	35'-4"	—
b_2	3	#5	42'-2"	—
b_3	6	#5	13'-6"	—
b_4	3	#5	23'-0"	—
d	70	#5	5'-4"	└┘
h	4	#6	26'-7"	—
h_1	2	#6	16'-6"	—
h_2	14	#6	6'-2"	—
h_3	32	#4	1'-9"	—
h_4	36	#4	10'-11"	—
s	23	#4	3'-3"	□
v	24	#7	10'-5"	—
v_1	24	#7	7'-0"	—
$v_2(E)$	36	#7	6'-5"	└┘
w	50	#5	8'-11"	—
w_1	16	#5	10'-10"	—
z	25	#5	5'-5"	—
Reinforcement Bars, Epoxy Coated			Pound	480
Concrete Box Culverts			Cu. Yd.	22.7
Reinforcement Bars			Pound	3670
Removal & Disposal of Unsuitable Material			Cu. Yd.	20.3
Bedding Material, Special			Cu. Yd.	20.3

Order b_1 , w_1 , and v bars full length. Cut as shown.
Use remainder of bar in opposite face.

S:\Projects\403-00072_57-70\Bridges\Culverts\US 45.dgn