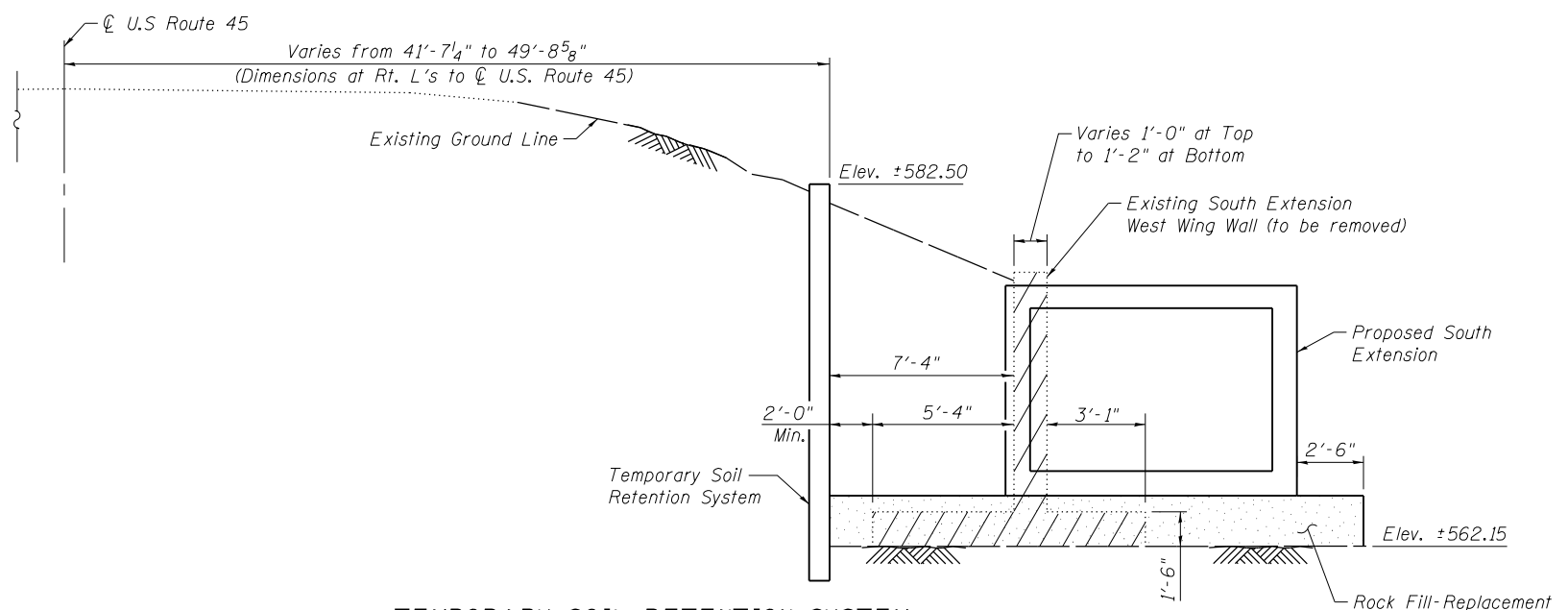
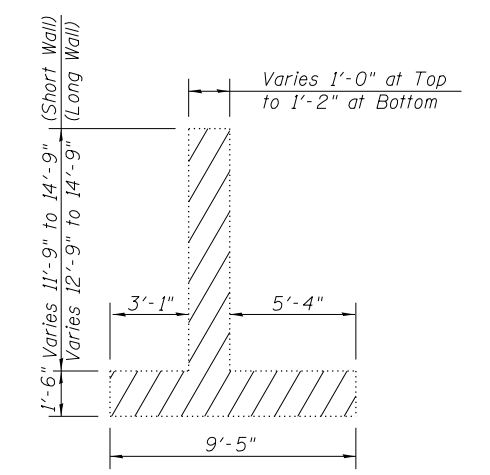


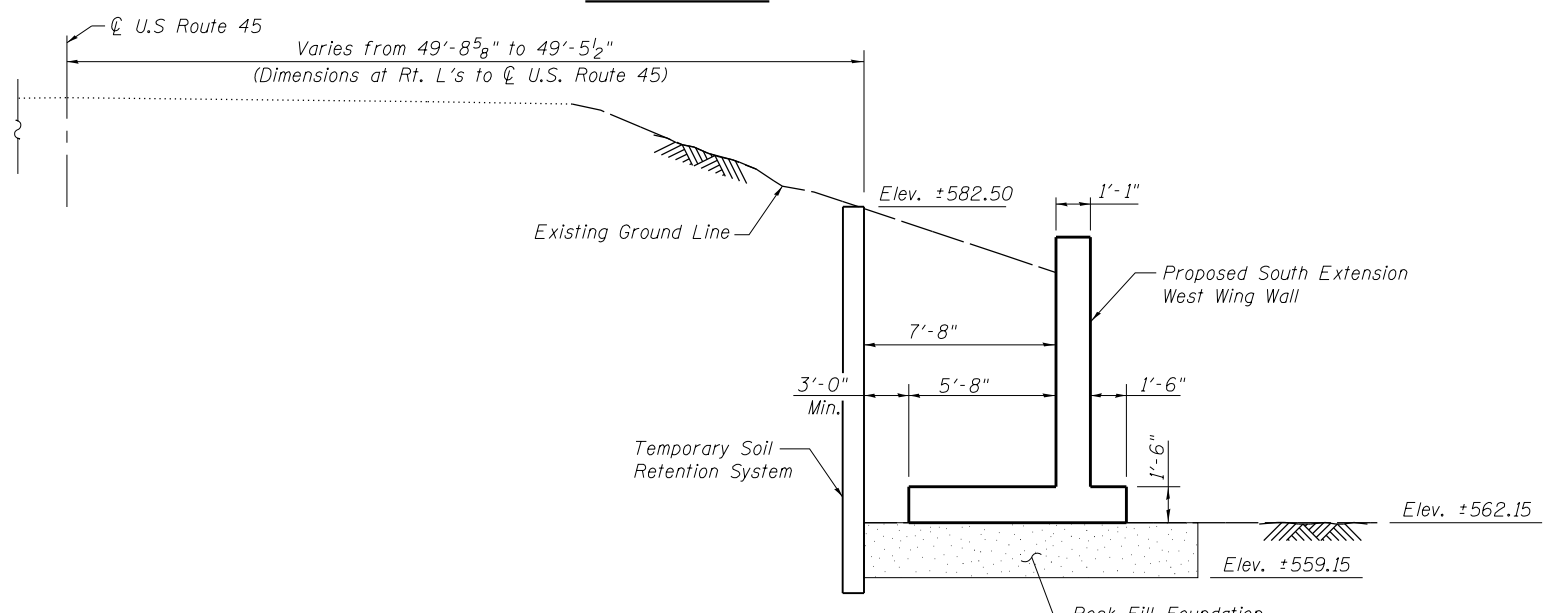
S:\Projects\403\0002_5770\Bridges\Bridges\025-8648_V-shaped_culvert_under_US_45\DWG\Final Design_CAD_Drawings\0258648-74295-003-Temp_Soil Ret System.dwg



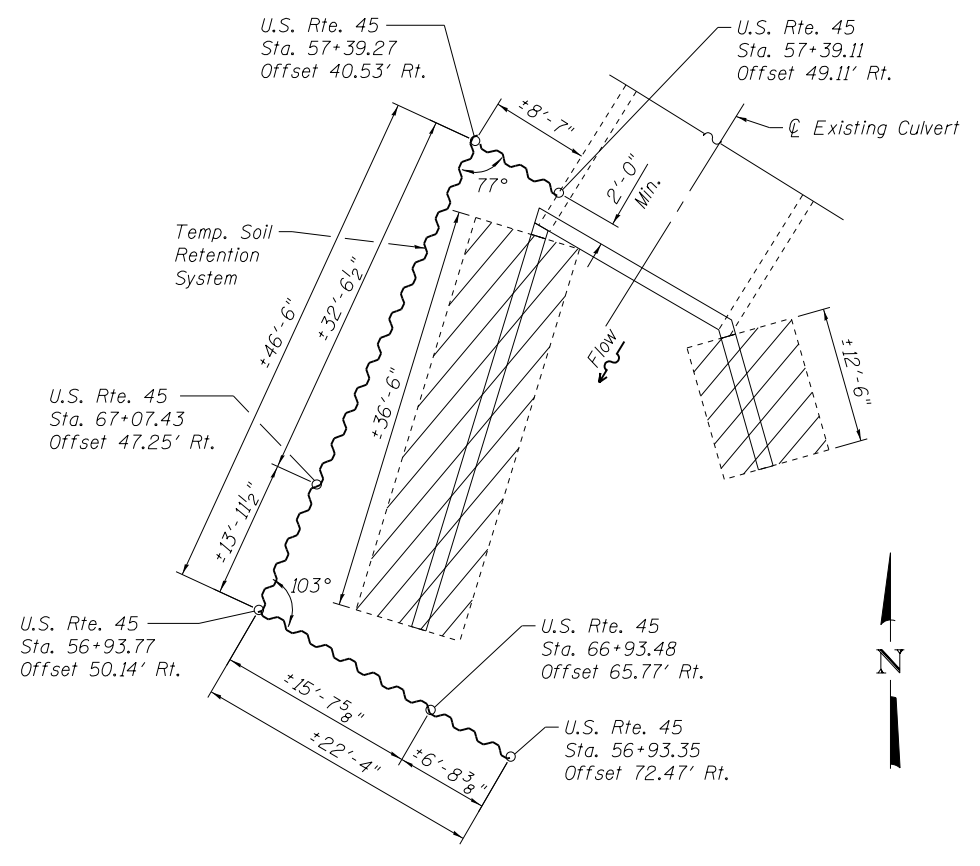
**TEMPORARY SOIL RETENTION SYSTEM
SECTION A-A**



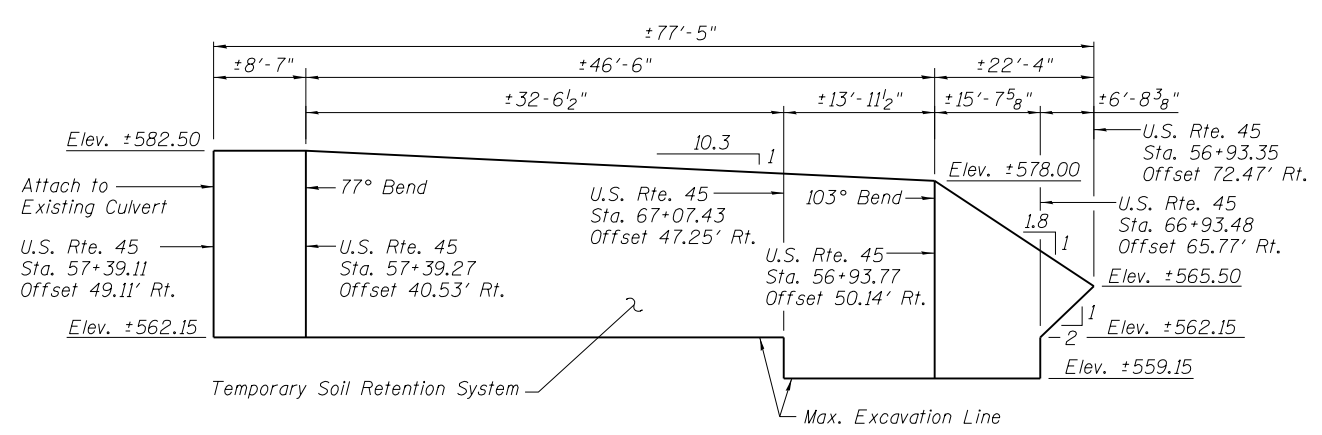
**SECTION THRU EXISTING SOUTH
EXTENSION WING WALLS**



**TEMPORARY SOIL RETENTION SYSTEM
SECTION B-B**



PLAN VIEW
(Proposed Structure not Shown for Clarity)



TEMPORARY SOIL RETENTION SYSTEM ELEVATION
(Looking East)

Indicates Concrete Removal

Notes:
See Sheet 6 of 12 for quantity of Concrete Removal.
A cantilevered sheet piling design does not appear feasible and additional members or other retention systems may be necessary. The Contractor shall submit a temporary soil retention system design including plan details and calculations for review and acceptance by the Engineer.

BILL OF MATERIAL

ITEM	UNIT	TOTAL
Temporary Soil Retention System	Sq. Ft.	1306