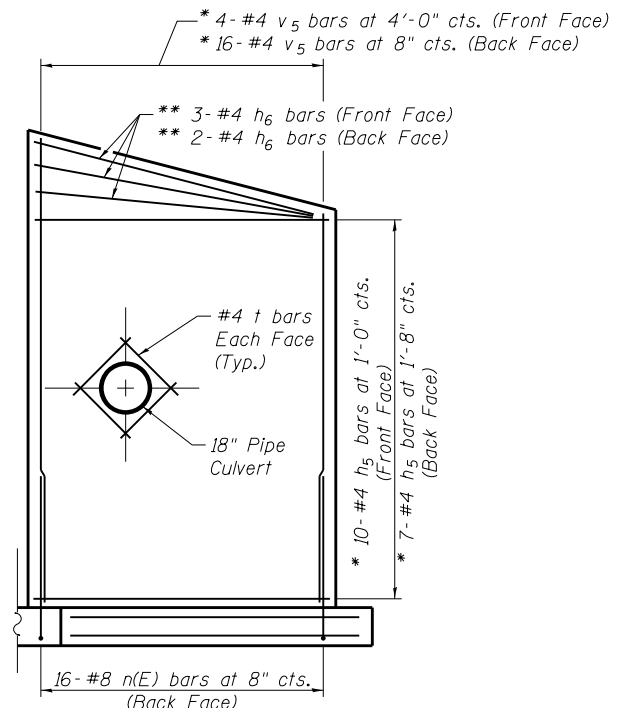
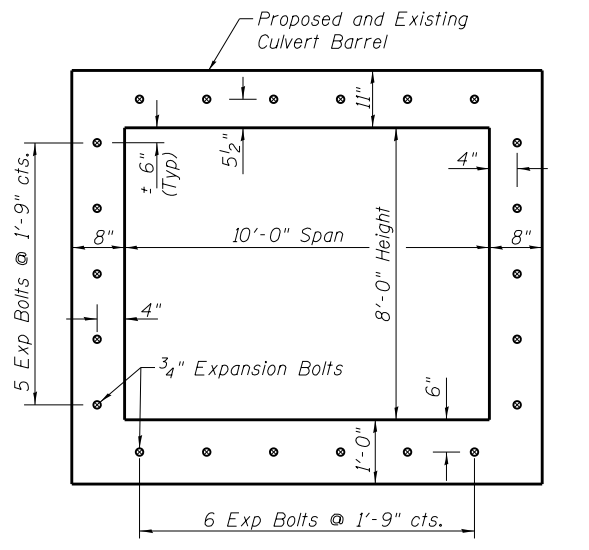


LONGITUDINAL SECTION
(East Wing Shown)

* Cut bars to avoid 18" Pipe Culvert
** Cut to Fit

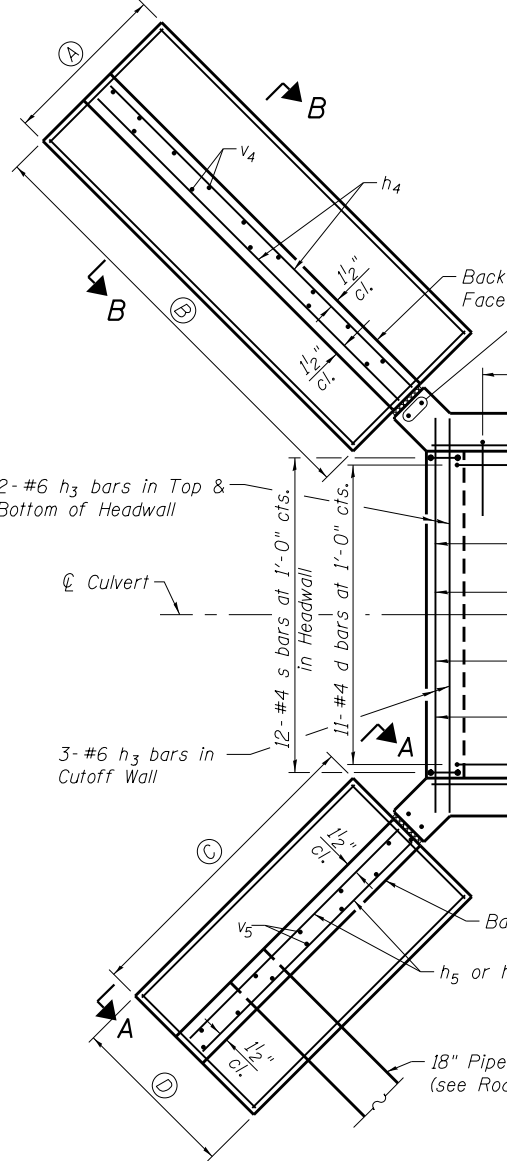


VIEW A-A
(West Wing)



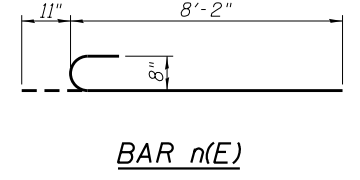
Note - Expansion Bolts shall be 3/4" hooked bolts. Hooked bolts shall extend a minimum of 9" into the new concrete

EXPANSION BOLT LAYOUT

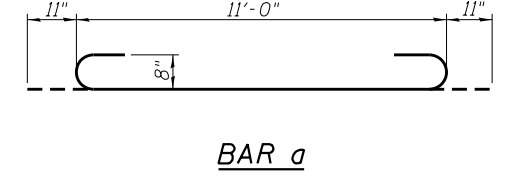


SHOWING REINFORCEMENT PLAN

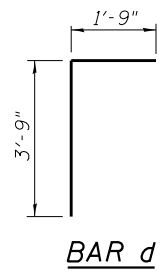
- (A) 6-#5 w bars at 1'-6" cts. Top & Bottom of Footing
- (B) 26-#5 t1 bars at 8" cts. Top of Footing
26-#4 t2 bars at 8" cts. Bottom of Footing
- (C) 15-#5 t1 bars at 9" cts. Top of Footing
13-#5 t1 bars at 10" cts. Bottom of Footing
- (D) 6-#5 w1 bars at 1'-6" cts. Top & Bottom of Footing



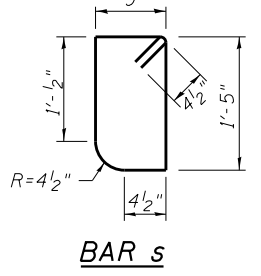
BAR n(E)



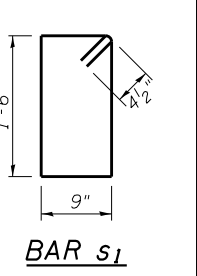
BAR a



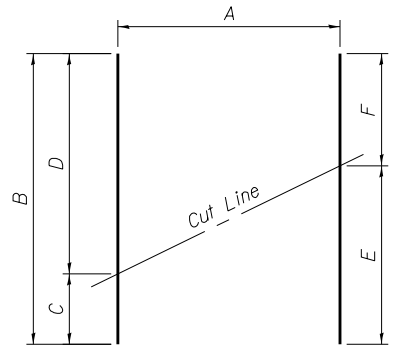
BAR d



BAR s



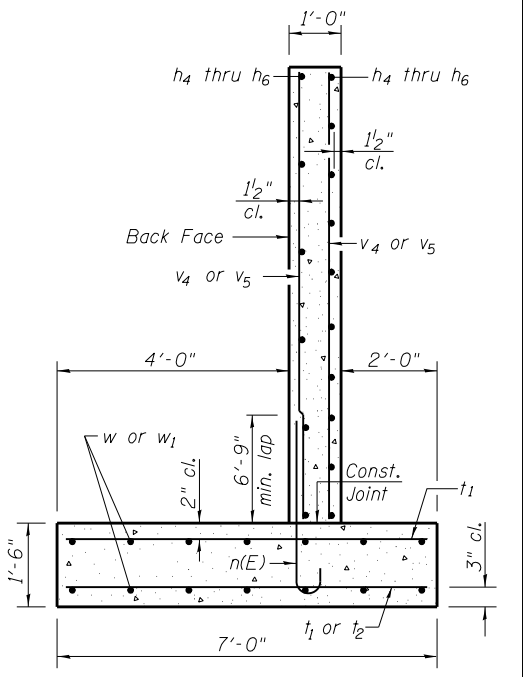
BAR s1



FIELD CUTTING DIAGRAM

	A	B	C	D	E	F
3-#4 v4 bars at 4'-0" cts. (East Wing Front Face)	22'-6"	11'-4 1/4"	11'-1 3/4"	11'-9 3/4"	10'-8 1/4"	
15-#4 v4 bars at 7" cts. (East Wing Back Face)	22'-6"	11'-3 1/4"	11'-2 3/4"	11'-9 3/4"	10'-8 1/4"	
2-#4 v5 bars at 4'-0" cts. (West Wing Front Face)	20'-6"	10'-9"	9'-9"	11'-9 1/2"	8'-8 1/2"	
8-#4 v5 bars at 8" cts. (West Wing Back Face)	20'-6"	10'-4 1/4"	10'-1 3/4"	11'-9 1/2"	8'-8 1/2"	

Order v4, v5, v6 & v7 bars full length. Cut as shown. Use remainder of bar in opposite side of wing wall.



SECTION B-B
Max. Soil Pressure Under Wing = 1970 psf

S:\Projects\403\00072_5770\Bridges\Bridg 025-8648 V shaped culvert under US 49\DWG\Final\Design CAD Drawings\0258648-74295-005-N_Ext.Dwg 02.dgn

FILE NAME = 0258648-74295-005-N_Ext.Dwg
 BERNARDEN LOCHMULLER & ASSOCIATES, INC.
 3 OAK DRIVE
 MARYVILLE, ILLINOIS 62452
 PHONE (618) 285-6666
 FAX (618) 285-6666

DESIGNED - ACS
 CHECKED - BB
 DRAWN - WJS
 CHECKED - CJF

REVISIONS
 REVISED -
 REVISED -
 REVISED -
 REVISED -

STATE OF ILLINOIS
DEPARTMENT OF TRANSPORTATION

NORTH EXTENSION DETAILS
STRUCTURE NO. 025-8648
SHEET NO. 5 OF 12 SHEETS

F.A.I. RE.	SECTION	COUNTY	TOTAL SHEETS	SHEET NO.
57/70	(25-4HVB-1)BY	EFFINGHAM	1760	524
CONTRACT NO. 74295				
ILLINOIS FED. AID PROJECT				