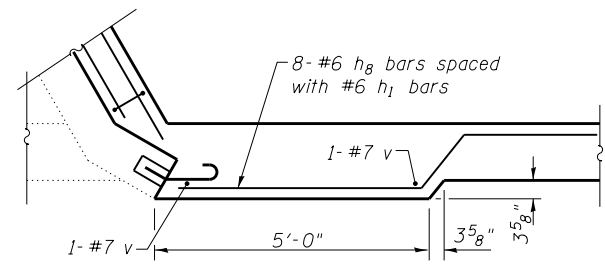
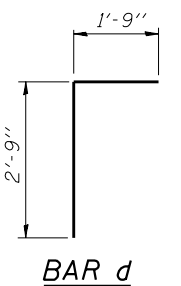
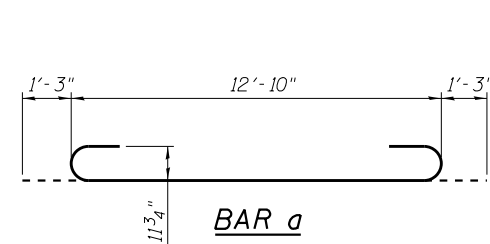
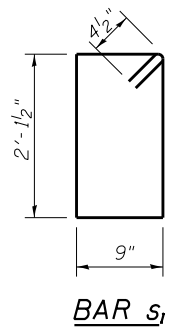
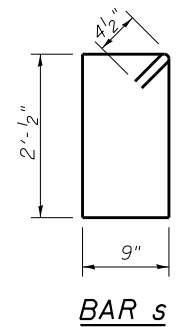
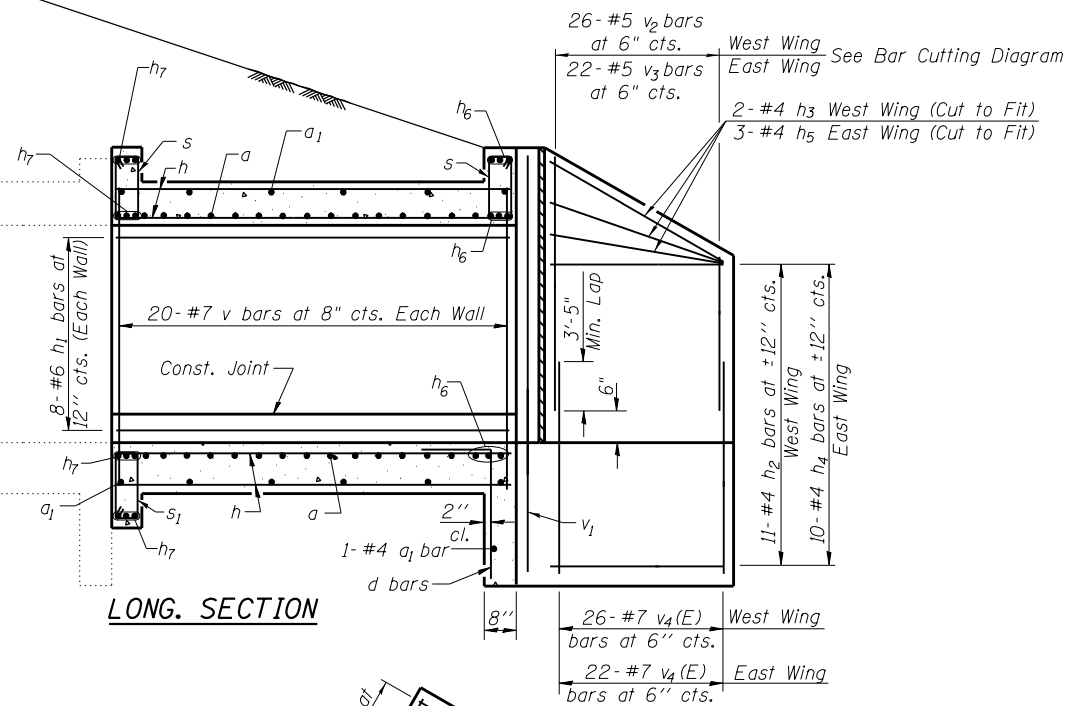
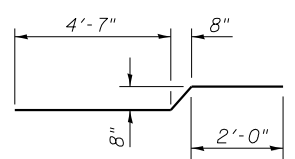


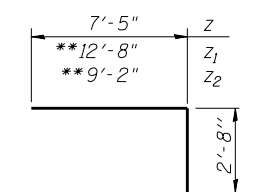
PG Elev. 612.53 PGL FAI RTE 70 EB



DETAIL A



BAR h8

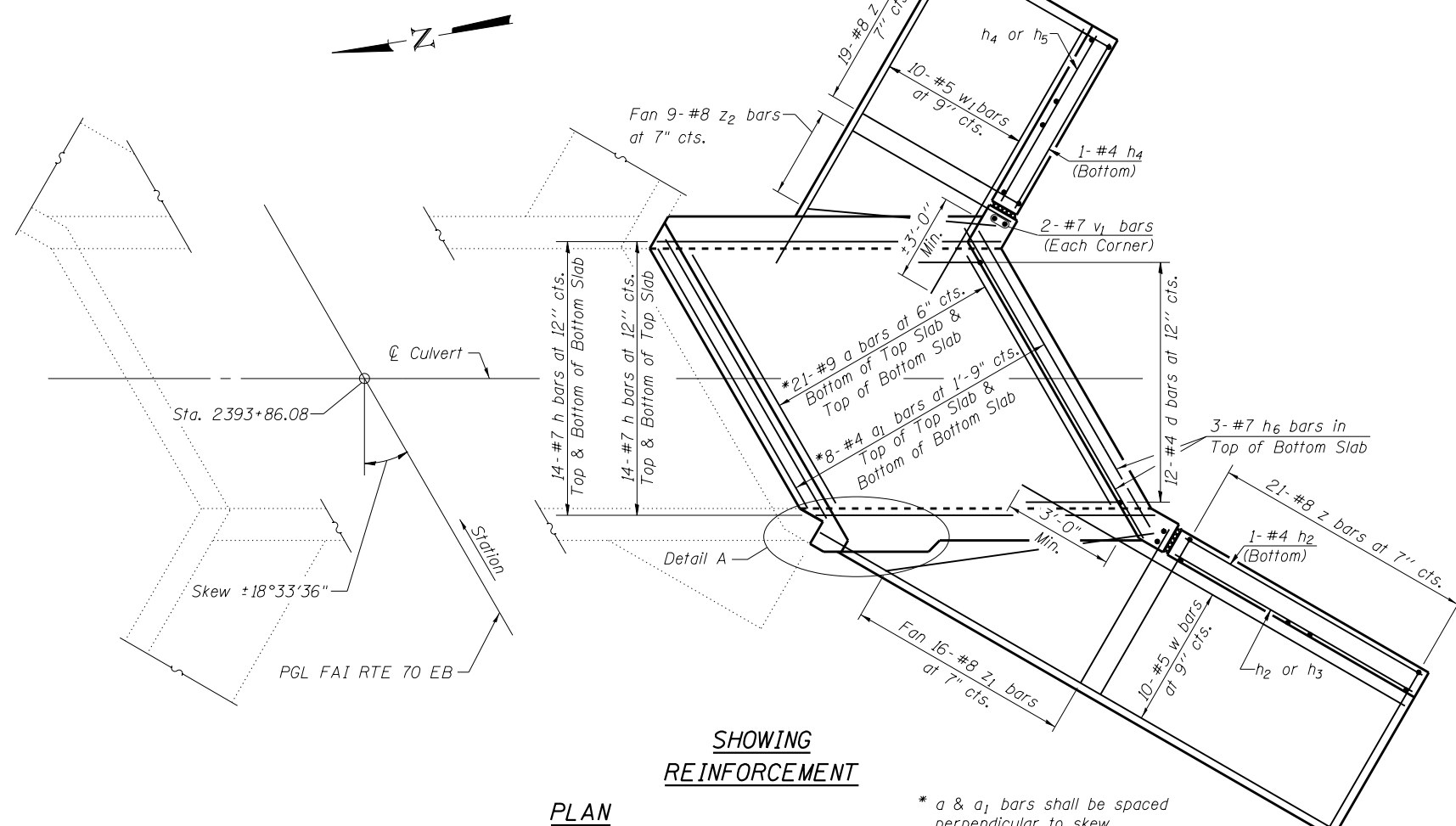


BAR z, z1 & z2

** Longest length required - z1 = 12'-8" and z2 = 9'-2". Field cut remaining z1 and z2 bars to fit.

BILL OF MATERIAL

Bar	No.	Size	Length	Shape
a	42	#9	15'-4"	
a1	17	#4	12'-10"	
d	12	#4	4'-6"	
h	56	#7	12'-2"	
h1	16	#6	12'-2"	
h2	12	#4	11'-8"	
h3	2	#4	11'-10"	
h4	11	#4	10'-5"	
h5	3	#4	10'-9"	
h6	9	#7	12'-10"	
h7	12	#7	13'-1"	
h8	8	#6	7'-6"	
s	24	#4	6'-4"	
s1	12	#4	6'-6"	
v	42	#7	9'-10"	
v1	4	#7	11'-11"	
v2	13	#5	14'-11"	
v3	11	#5	14'-4"	
v4(E)	48	#7	6'-9"	
w	10	#5	22'-8"	
w1	10	#5	19'-1"	
z	40	#8	10'-1"	
z1	16	#8	15'-4"	
z2	9	#8	11'-10"	
Concrete Box Culverts			Cu. Yd.	39.9
Reinforcement Bars, Epoxy Coated			Pound	670
Reinforcement Bars			Pound	8830
Expansion Bolts 3/4"			Each	26
Concrete Removal			Cu. Yd.	6.4
Removal & Disposal of Unsuitable Material			Cu. Yd.	30.2
Rock Fill-Replacement			Ton	63



Notes:
For Headwall and Edge Beam Reinforcement, see Sheet 1 of 3.
Order #5 w bars full length and cut to fit at Existing Culvert.

S:\Pro\brca\403-00072-57-70-Bridges\Culverts\Station_2393+86.08\DWG\Final Plan_Sheets\RT_2393+86.08.dwg

FILE NAME = \$FILES\$
BERNARDINI LOCHMUELLER & ASSOCIATES, INC.
3 OAK DRIVE
MARYVILLE, IL 62428
PHONE (618) 281-6666
FAX (618) 281-6666

USER NAME =
Illinois Design Firm Number 184,001670
PLOT SCALE =
PLOT DATE = 2:38:39 PM 5/1/2013

DESIGNED - A.C.S.
CHECKED - B.B.
DRAWN - A.C.S.
CHECKED - C.J.F.

REVISED -
REVISED -
REVISED -
REVISED -

STATE OF ILLINOIS
DEPARTMENT OF TRANSPORTATION

BOX CULVERT DETAILS, RT. STA 2393 + 86.08
F.A.I. ROUTE 70 EB (RDWY B)

SHEET NO. 2 OF 3 SHEETS

F.A.I. RTE.	SECTION	COUNTY	TOTAL SHEETS	SHEET NO.
57/70	(25-3,4R)	EFFINGHAM	1760	533
CONTRACT NO. 74295				
FED. ROAD DIST. NO. 7 ILLINOIS FED. AID PROJECT				