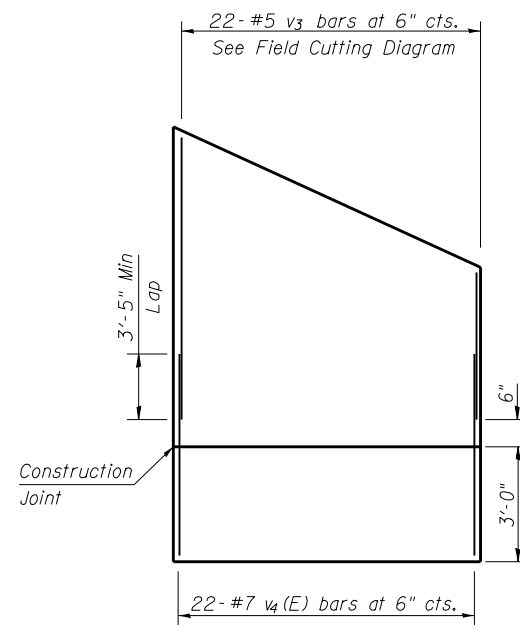
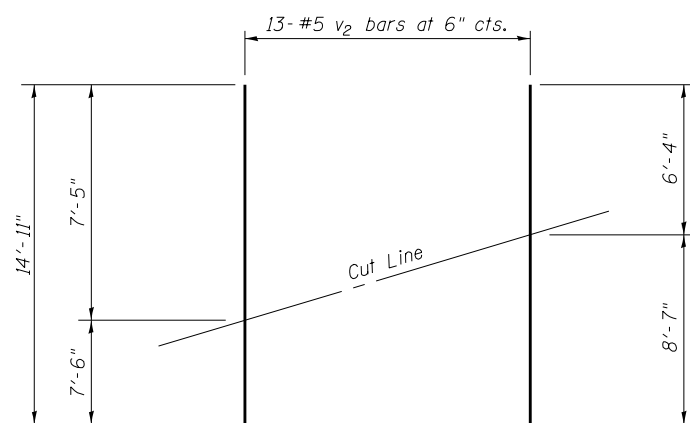


**WEST WING
SHOWING REINFORCEMENT**

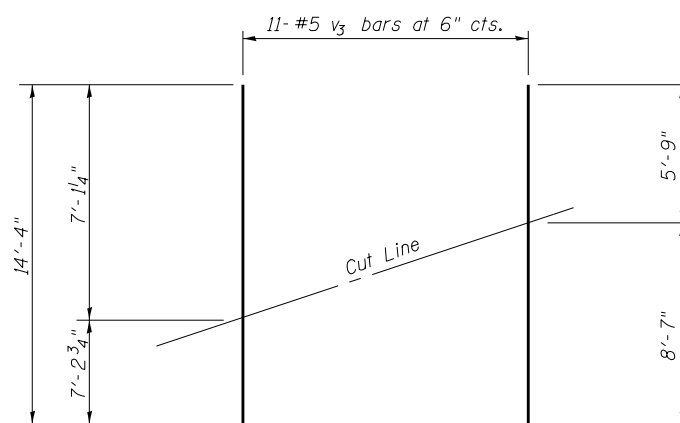


**EAST WING
SHOWING REINFORCEMENT**

**FIELD CUTTING AND
PLACEMENT DIAGRAMS**

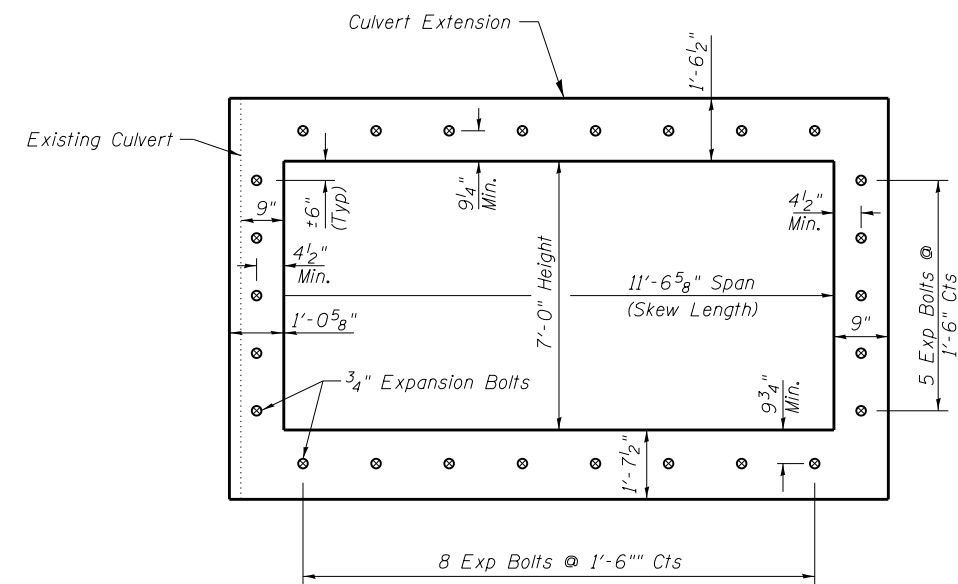


FIELD CUTTING DIAGRAM
(v₂ bars)



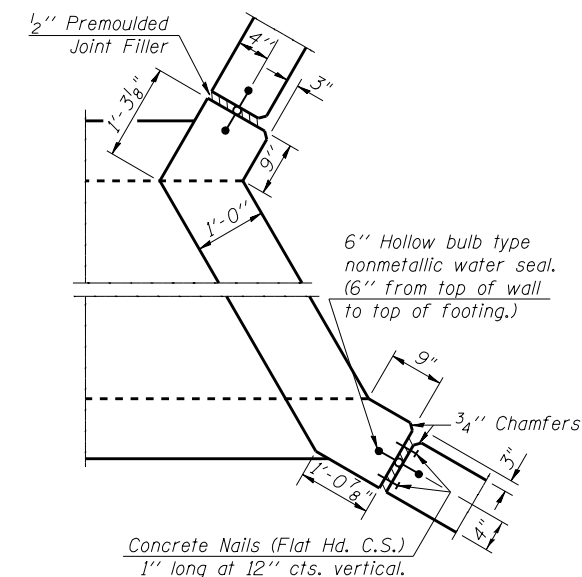
FIELD CUTTING DIAGRAM
(v₃ bars)

Order v₂ & v₃ bars full length. Cut as shown. Use remainder of bar in opposite end of Wing Wall.



Note - Expansion Bolts shall be 3/4" hooked bolts. Hooked bolts shall extend a minimum of 9" into the new concrete

EXPANSION BOLT LAYOUT



CORNER DETAIL

S:\Pro\brca\403-00072-57-70-Bridges\Culverts\Station_2393+86.08\Final Plan_Sheets\RT_2393+86.08.dgn

FILE NAME = \$FILES\$	USER NAME =	DESIGNED - A.C.S.	REVISED -
BERNARDINI LOCHMUELLER & ASSOCIATES, INC. 3 OAK DRIVE MARYVILLE, IL 62442 PHONE (618) 284-4666 FAX (618) 284-4666	Illinois Design Firm Number 184,001670	CHECKED - B.B.	REVISED -
	PLOT SCALE =	DRAWN - A.C.S.	REVISED -
	PLOT DATE = 2:38:40 PM 5/1/2013	CHECKED - C.J.F.	REVISED -

**STATE OF ILLINOIS
DEPARTMENT OF TRANSPORTATION**

**BOX CULVERT DETAILS, RT. STA 2393 + 86.08
F.A.I. ROUTE 70 EB (RDWY B)**

SHEET NO. 3 OF 3 SHEETS

F.A.I. RTE.	SECTION	COUNTY	TOTAL SHEETS	SHEET NO.
57/70	(25-3,4R)	EFFINGHAM	1760	534
CONTRACT NO. 74295				
FED. ROAD DIST. NO. 7 ILLINOIS FED. AID PROJECT				