

NORTH CURB LINE

Location	Station	Offset	Theoretical Grade Elevations	Theoretical Grade Elevations Adjusted For Grinding
W. End of East Approach	2295+31.17	-14.83	631.04	631.06
EA	2295+41.17	-14.83	631.00	631.02
EB	2295+51.17	-14.83	630.95	630.97
E. End of East Approach	2295+61.17	-14.83	630.90	630.92

PROFILE GRADE LINE & NORTH EDGE OF PAVEMENT

Location	Station	Offset	Theoretical Grade Elevations	Theoretical Grade Elevations Adjusted For Grinding
W. End of East Approach	2295+22.08	0.00	631.39	631.41
EA	2295+32.08	0.00	631.35	631.37
EB	2295+42.08	0.00	631.30	631.32
E. End of East Approach	2295+52.08	0.00	631.25	631.27

STAGE CONSTRUCTION LINE

Location	Station	Offset	Theoretical Grade Elevations	Theoretical Grade Elevations Adjusted For Grinding
W. End of East Approach	2295+12.27	16.00	631.69	631.71
EA	2295+22.27	16.00	631.64	631.66
EB	2295+32.27	16.00	631.60	631.62
E. End of East Approach	2295+42.27	16.00	631.55	631.57

EB F.A.I. 57/70

Location	Station	Offset	Theoretical Grade Elevations	Theoretical Grade Elevations Adjusted For Grinding
W. End of East Approach	2295+07.37	24.00	631.83	631.85
EA	2295+17.37	24.00	631.79	631.81
EB	2295+27.37	24.00	631.74	631.77
E. End of East Approach	2295+37.37	24.00	631.70	631.72

NORTH EDGE OF RAMP C

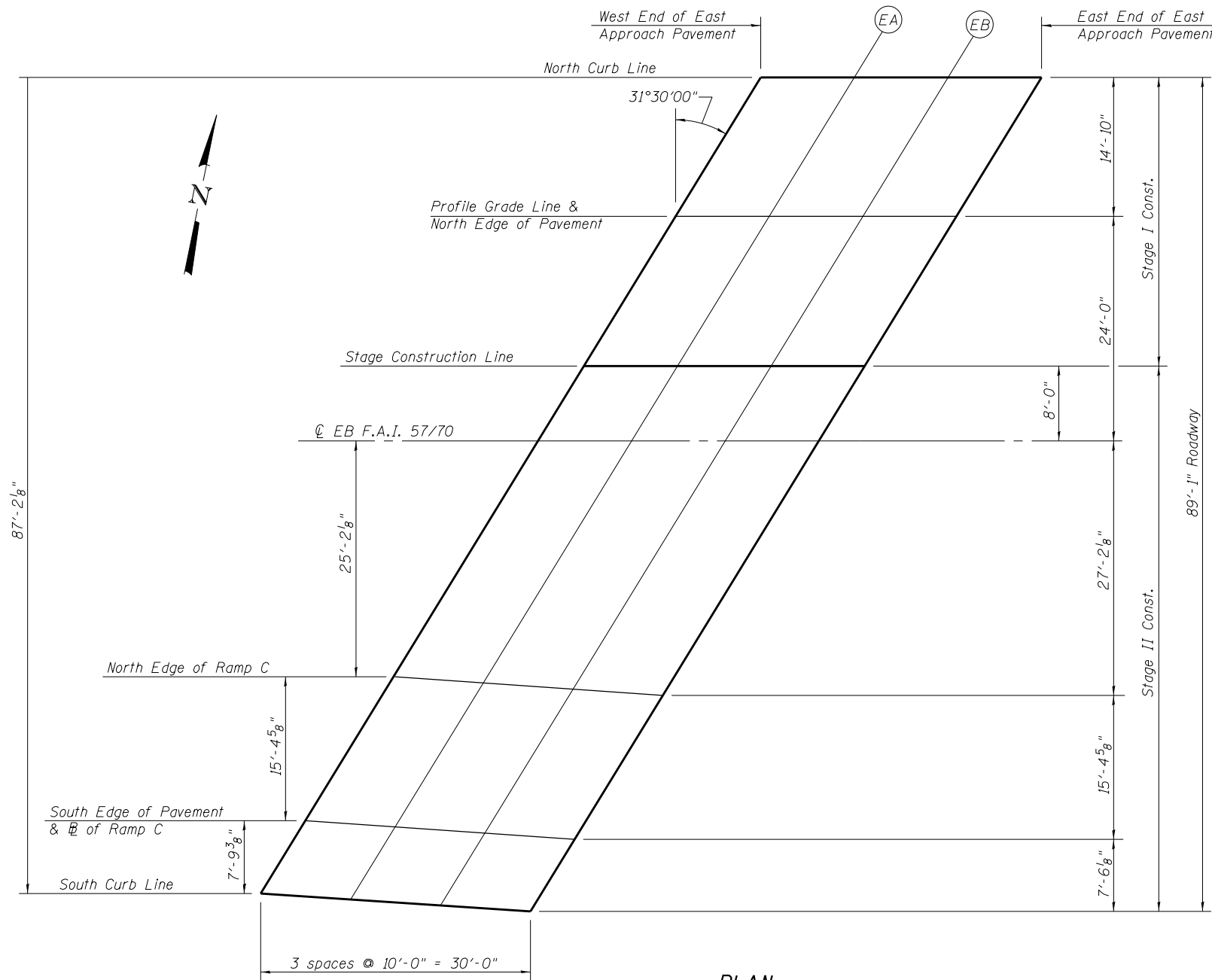
Location	Station	Offset	Theoretical Grade Elevations	Theoretical Grade Elevations Adjusted For Grinding
W. End of East Approach	2294+91.94	49.17	631.50	631.52
EA	2295+01.53	49.84	631.45	631.47
EB	2295+11.12	50.51	631.40	631.42
E. End of East Approach	2295+20.72	51.18	631.35	631.37

SOUTH EDGE OF PAVEMENT & EB OF RAMP C

Location	Station	Offset	Theoretical Grade Elevations	Theoretical Grade Elevations Adjusted For Grinding
W. End of East Approach	2294+82.52	64.56	631.29	631.31
EA	2294+92.11	65.23	631.25	631.27
EB	2295+01.70	65.89	631.20	631.22
E. End of East Approach	2295+11.29	66.56	631.15	631.17

SOUTH CURB LINE

Location	Station	Offset	Theoretical Grade Elevations	Theoretical Grade Elevations Adjusted For Grinding
W. End of East Approach	2294+77.75	72.34	631.15	631.17
EA	2294+87.36	72.97	631.10	631.12
EB	2294+96.97	73.61	631.05	631.08
E. End of East Approach	2295+06.58	74.25	631.01	631.03



PLAN