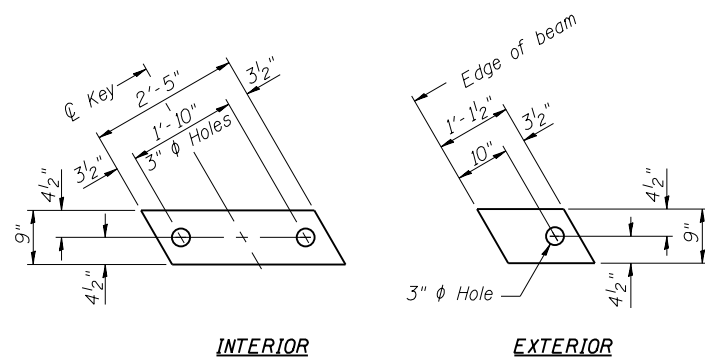
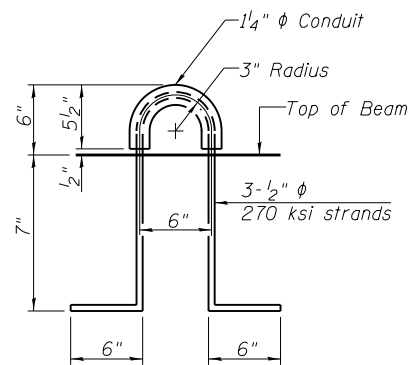


SECTION THRU TYPICAL SHEAR KEY JOINT

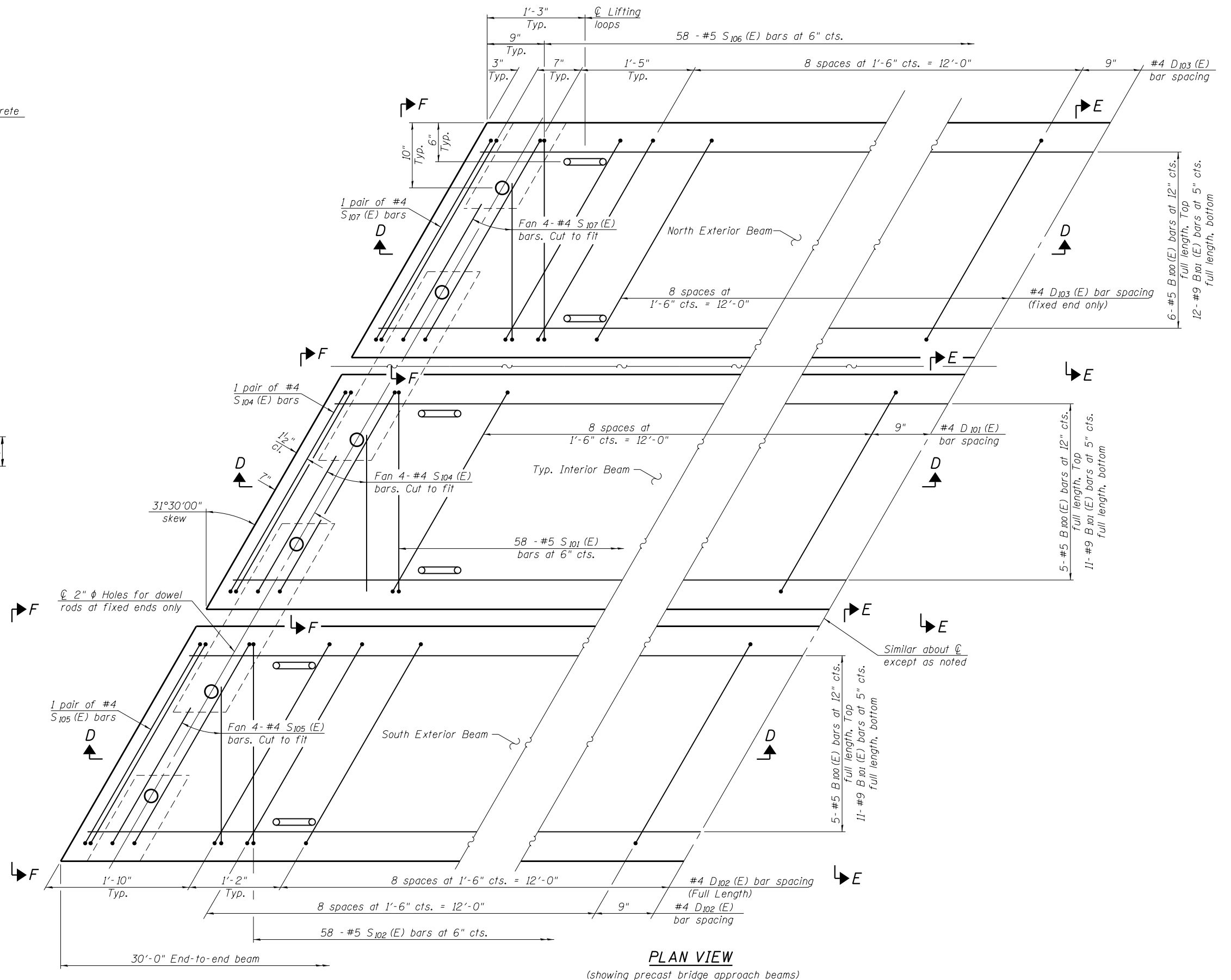


FABRIC BEARING PAD

Notes:
 All bearing pads shall be 1/2" thick.
 Omit holes for fabric bearing pads at approach slab footing end of beams.
 Expansion bearing pad shall be bonded to the approach slab footing.



LIFTING LOOP DETAIL



PLAN VIEW

(showing precast bridge approach beams)

FILE NAME = 025011-74295-042-E Approach Slab BERNARDSON - LOCHMUELLER & ASSOCIATES, INC. 3 OAK DRIVE MARYVILLE, ILLINOIS 62062 PHONE (618) 284-4665 FAX (618) 284-4666	DESIGNED - BB CHECKED - ACS DRAWN - WJS CHECKED - CJF	REVISED REVISED REVISED REVISED	STATE OF ILLINOIS DEPARTMENT OF TRANSPORTATION	EAST PRECAST BRIDGE APPROACH SLAB DETAILS (WB) STRUCTURE NO. 025-0111	F.A.I. R.T.E. 57/70	SECTION (25-4HVB-1)BY	COUNTY EFFINGHAM	TOTAL SHEETS 1760	SHEET NO. 577
	PLOT SCALE = PLOT DATE = 3:26:01 PM 8/14/2013	ILLINOIS DESIGN FIRM NUMBER 184.001670			CONTRACT NO. 74295	ILLINOIS FED. AID PROJECT			