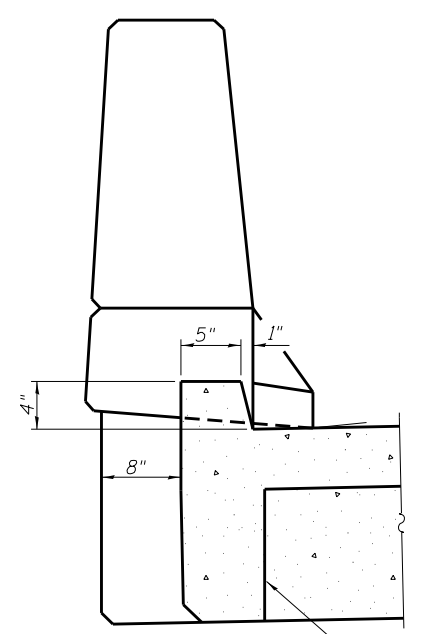
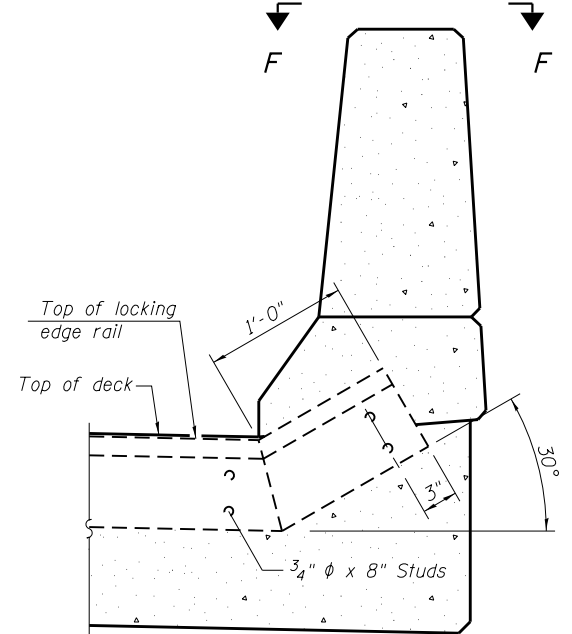


* Lap with each a₂₁₇(E) bar
 ** Order b₂₀₇(E) bars full length and cut to fit.

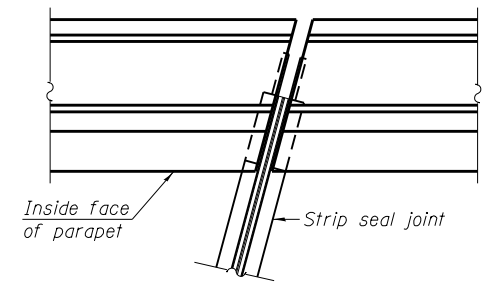
Notes:
 Bars indicated thus 20x2 indicates 20 bars with 2 bars per line.
 See sheet 49 of 79 for Sections B-B, C-C and D-D.



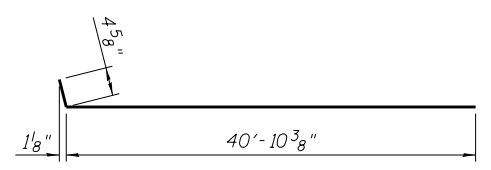
SECTION A-A



SECTION E-E



VIEW F-F



BAR a₂₁₇(E)

MINIMUM BAR LAP
 #4 bar = 2'-0"
 #5 bar = 2'-7"

EAST APPROACH SLAB PLAN
 (Showing wearing surface)

FILE NAME = 025011-74295-048-E Approach Slab BERNARDINI LOCHMUELLER & ASSOCIATES, INC. 3 OAK DRIVE MARYVILLE, ILLINOIS 62442 PHONE (618) 284-4665 FAX (618) 284-4666	DESIGNED - BB	REVISED	EAST PRECAST BRIDGE APPROACH SLAB DETAILS (EB) STRUCTURE NO. 025-0112 SHEET NO. 48 OF 79 SHEETS	F.A.I. RTE. 57/70	SECTION (25-4HVB-1)BY	COUNTY EFFINGHAM	TOTAL SHEETS 1760	SHEET NO. 583	
	CHECKED - ACS	REVISED		CONTRACT NO. 74295	ILLINOIS FED. AID PROJECT				
	DRAWN - WJS	REVISED							
	CHECKED - CJF	REVISED							