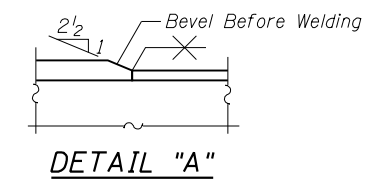


Notes:
 Load carrying components designated "NTR" shall conform to the Impact Testing Requirements, Zone 2. For Framing Plan, see sheets 52 & 53 of 79.
 All webs and flanges of the girders, bearing stiffeners, web and flange splice plates, filler plates and bearing plates shall be AASHTO M270 Grade S50W unless noted otherwise.
 All splice plates except filler plate shall be designated as "NTR".

GIRDER ELEVATION



* Indicates plates are made of M270 HPS Grade 70W steel.
 ** Same for top and bottom flanges

GIRDER DIMENSION TABLE

Girder	A	B	C	D	E	F	G	H	I	J	K	L	M	N	P	R	S	T
1	379'-8 ⁷ / ₈ "	181'-6 ⁷ / ₈ "	198'-1 ¹ / ₄ "	26'-6 ⁷ / ₈ "	23'-5 ⁵ / ₈ "	129'-3 ³ / ₈ "	54	76'-6"	6	6'-6"	5'-1 ⁵ / ₈ "	27	29'-3"	65	97'-6"	28'-3 ⁷ / ₁₆ "	34'-2 ⁹ / ₁₆ "	32'-3 ³ / ₄ "
2	378'-4 ¹ / ₂ "	180'-11 ¹ / ₂ "	197'-5"	25'-11 ¹ / ₂ "	24'-0 ¹ / ₂ "	127'-11 ¹ / ₂ "	53	75'-1"	7	7'-7"	5'-3"	26	28'-2"	65	97'-6"	27'-11 ³ / ₄ "	34'-6 ¹ / ₄ "	31'-11 ⁷ / ₈ "
3	377'-1"	180'-4"	196'-9"	25'-4"	24'-8"	126'-8"	52	73'-8"	9	9'-9"	4'-3 ¹ / ₂ "	25	27'-1"	65	97'-6"	27'-8"	34'-10"	31'-8"
4	377'-1"	180'-4"	196'-9"	25'-4"	24'-8"	126'-8"	52	73'-8"	9	9'-9"	4'-3 ¹ / ₂ "	25	27'-1"	65	97'-6"	27'-8"	34'-10"	31'-8"
5	377'-1"	180'-4"	196'-9"	25'-4"	24'-8"	126'-8"	52	73'-8"	9	9'-9"	4'-3 ¹ / ₂ "	25	27'-1"	65	97'-6"	27'-8"	34'-10"	31'-8"
6	377'-1"	180'-4"	196'-9"	25'-4"	24'-8"	126'-8"	52	73'-8"	9	9'-9"	4'-3 ¹ / ₂ "	25	27'-1"	65	97'-6"	27'-8"	34'-10"	31'-8"
7	377'-1"	180'-4"	196'-9"	25'-4"	24'-8"	126'-8"	52	73'-8"	9	9'-9"	4'-3 ¹ / ₂ "	25	27'-1"	65	97'-6"	27'-8"	34'-10"	31'-8"
8	377'-1"	180'-4"	196'-9"	25'-4"	24'-8"	126'-8"	52	73'-8"	9	9'-9"	4'-3 ¹ / ₂ "	25	27'-1"	65	97'-6"	27'-8"	34'-10"	31'-8"
9	377'-1"	180'-4"	196'-9"	25'-4"	24'-8"	126'-8"	52	73'-8"	9	9'-9"	4'-3 ¹ / ₂ "	25	27'-1"	65	97'-6"	27'-8"	34'-10"	31'-8"
10	377'-1"	180'-4"	196'-9"	25'-4"	24'-8"	126'-8"	52	73'-8"	9	9'-9"	4'-3 ¹ / ₂ "	25	27'-1"	65	97'-6"	27'-8"	34'-10"	31'-8"
11	377'-1"	180'-4"	196'-9"	25'-4"	24'-8"	126'-8"	52	73'-8"	9	9'-9"	4'-3 ¹ / ₂ "	25	27'-1"	65	97'-6"	27'-8"	34'-10"	31'-8"
12	377'-1"	180'-4"	196'-9"	25'-4"	24'-8"	126'-8"	52	73'-8"	9	9'-9"	4'-3 ¹ / ₂ "	25	27'-1"	65	97'-6"	27'-8"	34'-10"	31'-8"
13	377'-1"	180'-4"	196'-9"	25'-4"	24'-8"	126'-8"	52	73'-8"	9	9'-9"	4'-3 ¹ / ₂ "	25	27'-1"	65	97'-6"	27'-8"	34'-10"	31'-8"
14	377'-1"	180'-4"	196'-9"	25'-4"	24'-8"	126'-8"	52	73'-8"	9	9'-9"	4'-3 ¹ / ₂ "	25	27'-1"	65	97'-6"	27'-8"	34'-10"	31'-8"
15	377'-1"	180'-4"	196'-9"	25'-4"	24'-8"	126'-8"	52	73'-8"	9	9'-9"	4'-3 ¹ / ₂ "	25	27'-1"	65	97'-6"	27'-8"	34'-10"	31'-8"
16	374'-11 ¹ / ₄ "	179'-3 ³ / ₄ "	195'-7 ¹ / ₂ "	24'-3 ³ / ₄ "	25'-7 ¹ / ₂ "	124'-7"	51	72'-3"	10	10'-10"	4'-7 ³ / ₄ "	23	24'-11"	65	97'-6"	27'-1 ⁷ / ₈ "	35'-3 ³ / ₄ "	31'-1 ³ / ₄ "
17	372'-9 ⁷ / ₈ "	178'-3 ⁵ / ₈ "	194'-6 ¹ / ₄ "	23'-3 ¹ / ₂ "	24'-6 ¹ / ₄ "	124'-7"	50	70'-10"	9	9'-9"	5'-5 ³ / ₈ "	24	26'-0"	64	96'-0"	26'-7 ³ / ₄ "	34'-9 ¹ / ₈ "	31'-1 ³ / ₄ "
18	370'-8 ³ / ₄ "	177'-3 ¹ / ₂ "	193'-5 ¹ / ₄ "	22'-3 ⁵ / ₈ "	23'-5 ¹ / ₄ "	124'-7"	49	69'-5"	9	9'-9"	4'-9 ¹ / ₄ "	24	26'-0"	64	96'-0"	26'-1 ¹⁵ / ₁₆ "	34'-2 ⁵ / ₈ "	31'-1 ³ / ₄ "
19	368'-8 ¹ / ₄ "	176'-3 ⁷ / ₈ "	192'-4 ³ / ₈ "	21'-3 ⁷ / ₈ "	22'-4 ³ / ₈ "	124'-7"	48	68'-0"	8	8'-8"	5'-7 ³ / ₄ "	25	27'-1"	63	94'-6"	25'-7 ¹⁵ / ₁₆ "	33'-8 ³ / ₁₆ "	31'-1 ³ / ₄ "

