

ABUTMENT ANCHOR BOLT LOCATION DETAIL

****SHIM PLATES REQUIRED**

W. Abut. Girder 4 - 0¹/₈" shim P

Notes:
Two 1/8" in. adjusting shims shall be provided for each bearing in addition to all other plates or shims and placed as shown on bearing details.

The horizontal dimension "E" between holes in the cross frame connection plate and L4"x4" angle shall be measured in the field. The holes in the L3"x3" angle shall be field drilled based on this dimension.

Stop fillet weld from connection plate to flange 1/4" from end of connection plate.

Bolts connecting temporary bracing shall be 7/8" φ bolts in 1 1/16" φ holes. All other holes in connection plates shall be 15/16" φ for 3/4" φ bolts.

Cost of Stage I and Stage II Temporary Interior Crossframes included with Furnishing and Erecting Structural Steel.

All temporary bracing shall be Grade 50W.

All steel plates shall be Grade 50W.

Rocker Plate
2" x 9" x 1'-9" (W. Abut.)
2" x 9" x 1'-10" (E. Abut.)

1/8" elastomeric neoprene leveling pad according to the material properties of Article 1052.02 of the Standard Specifications. Cost included with Structural Steel.

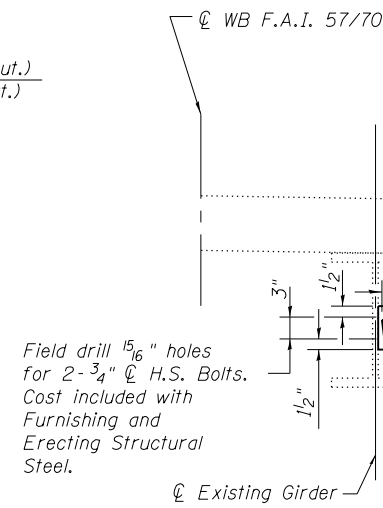
1" φ x 12" Anchor Bolts
ASTM A307 Grade C with 2 1/4" x 2 1/4" x 5/16" P washer under nut. 1 3/8" x 2" slotted hole in flange. 1 1/2" φ holes in bearing plate. See End Girder Details on sheet 55 of 79.

ELEVATION

SECTION A-A

FIXED BEARING AT ABUTMENTS

(19 Required at West Abutment)
(19 Required at East Abutment)



STAGE I TEMPORARY INTERIOR CROSSFRAME

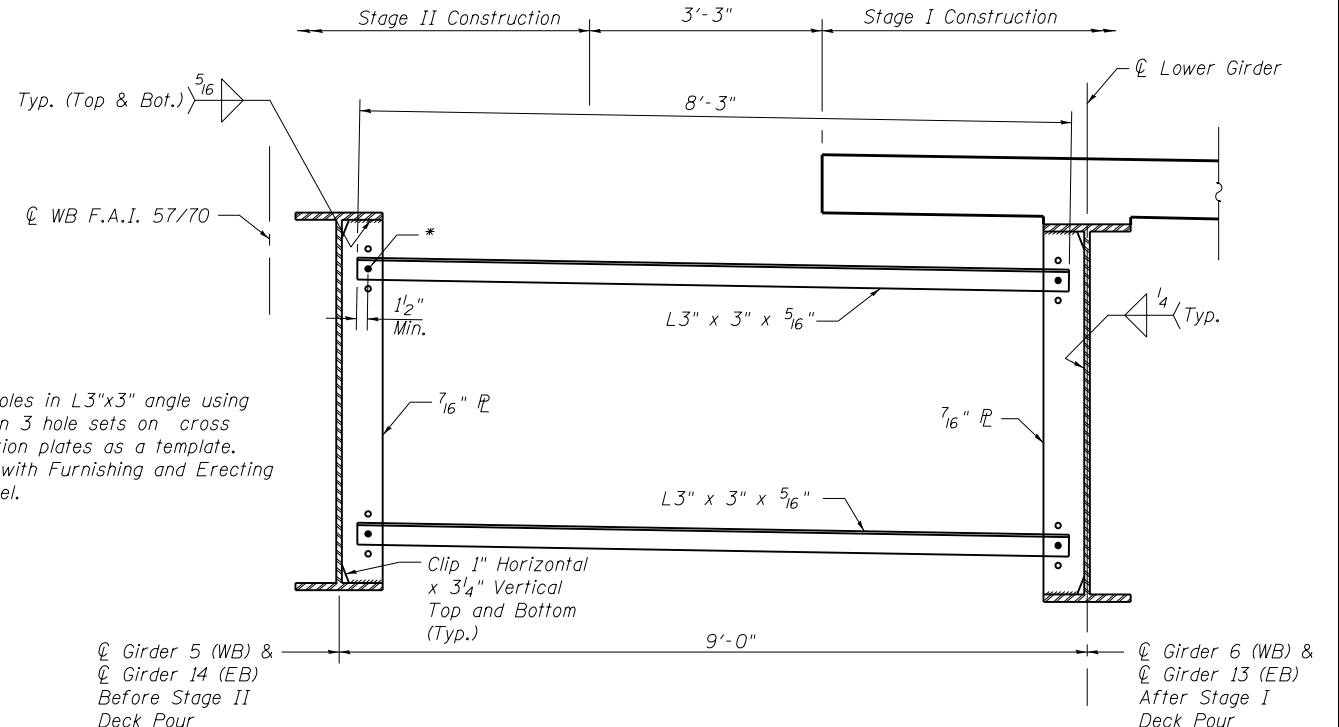
(38 Required)
(SN 025-0111 shown)
(SN 025-0112, Girder 13 similar)

WESTBOUND STRUCTURE 025-0111

Location	Girder	Angle "A"	"B" (in.)	"C" (in.)	"D" (in.)
West Abutment	1	32°08'00"	5 1/4"	4 1/2"	2 3/4"
West Abutment	2	31°49'04"	5 1/4"	4 1/2"	2 3/4"
West Abutment	3	31°30'00"	5 1/4"	4 1/2"	2 5/8"
West Abutment	4	31°30'00"	5 1/4"	4 1/2"	2 5/8"
West Abutment	5	31°30'00"	5 1/4"	4 1/2"	2 5/8"
West Abutment	6	31°30'00"	5 1/4"	4 1/2"	2 5/8"
West Abutment	7	31°30'00"	5 1/4"	4 1/2"	2 5/8"
West Abutment	8	31°30'00"	5 1/4"	4 1/2"	2 5/8"
West Abutment	9	31°30'00"	5 1/4"	4 1/2"	2 5/8"
East Abutment	1	32°08'00"	5 1/2"	4 5/8"	2 7/8"
East Abutment	2	31°49'04"	5 1/2"	4 5/8"	2 7/8"
East Abutment	3	31°30'00"	5 1/2"	4 3/4"	2 7/8"
East Abutment	4	31°30'00"	5 1/2"	4 3/4"	2 7/8"
East Abutment	5	31°30'00"	5 1/2"	4 3/4"	2 7/8"
East Abutment	6	31°30'00"	5 1/2"	4 3/4"	2 7/8"
East Abutment	7	31°30'00"	5 1/2"	4 3/4"	2 7/8"
East Abutment	8	31°30'00"	5 1/2"	4 3/4"	2 7/8"
East Abutment	9	31°30'00"	5 1/2"	4 3/4"	2 7/8"

EASTBOUND STRUCTURE 025-0112

Location	Girder	Angle "A"	"B" (in.)	"C" (in.)	"D" (in.)
West Abutment	10	31°30'00"	5 1/4"	4 1/2"	2 3/4"
West Abutment	11	31°30'00"	5 1/4"	4 1/2"	2 3/4"
West Abutment	12	31°30'00"	5 1/4"	4 1/2"	2 3/4"
West Abutment	13	31°30'00"	5 1/4"	4 1/2"	2 3/4"
West Abutment	14	31°30'00"	5 1/4"	4 1/2"	2 3/4"
West Abutment	15	31°30'00"	5 1/4"	4 1/2"	2 3/4"
West Abutment	16	30°57'29"	5 1/4"	4 1/2"	2 3/4"
West Abutment	17	30°24'35"	5 1/4"	4 1/2"	2 5/8"
West Abutment	18	29°51'19"	5 1/4"	3 1/4"	1 7/8"
West Abutment	19	29°17'41"	5 1/4"	2 5/8"	4 5/8"
East Abutment	10	31°30'00"	5 1/2"	4 3/4"	2 7/8"
East Abutment	11	31°30'00"	5 1/2"	4 3/4"	2 7/8"
East Abutment	12	31°30'00"	5 1/2"	4 3/4"	2 7/8"
East Abutment	13	31°30'00"	5 1/2"	4 3/4"	2 7/8"
East Abutment	14	31°30'00"	5 1/2"	4 3/4"	2 7/8"
East Abutment	15	31°30'00"	5 1/2"	4 3/4"	2 7/8"
East Abutment	16	30°57'29"	5 1/2"	4 3/4"	2 7/8"
East Abutment	17	30°24'35"	5 1/2"	4 3/4"	2 3/4"
East Abutment	18	29°51'19"	5 1/2"	4 3/4"	2 3/4"
East Abutment	19	29°17'41"	5 1/2"	4 3/4"	2 3/4"



STAGE II TEMPORARY INTERIOR CROSSFRAME

(38 Required)
(SN 025-0111 (WB) looking East)
(SN 025-0112 (EB) looking West)

TEMPORARY INTERIOR CROSSFRAME INSTALLATION PROCEDURE

1. Install Stage I temporary Interior Crossframe before Stage I deck pour.
2. Remove Stage I temporary Interior Crossframe prior to Stage II removal.
3. Install Stage II temporary Interior Crossframe before Stage II deck pour.
4. Remove Stage II temporary Interior Crossframe prior to Stage III closure pour.
5. Install permanent Crossframes Prior to Stage III closure pour.

BILL OF MATERIAL

Item	Unit	Total
Anchor Bolts, 1" φ	Each	76