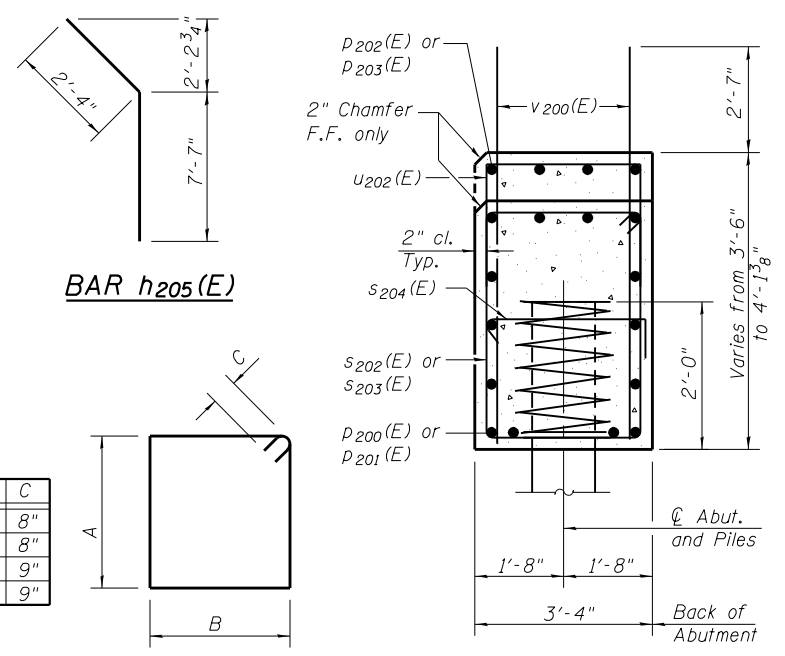
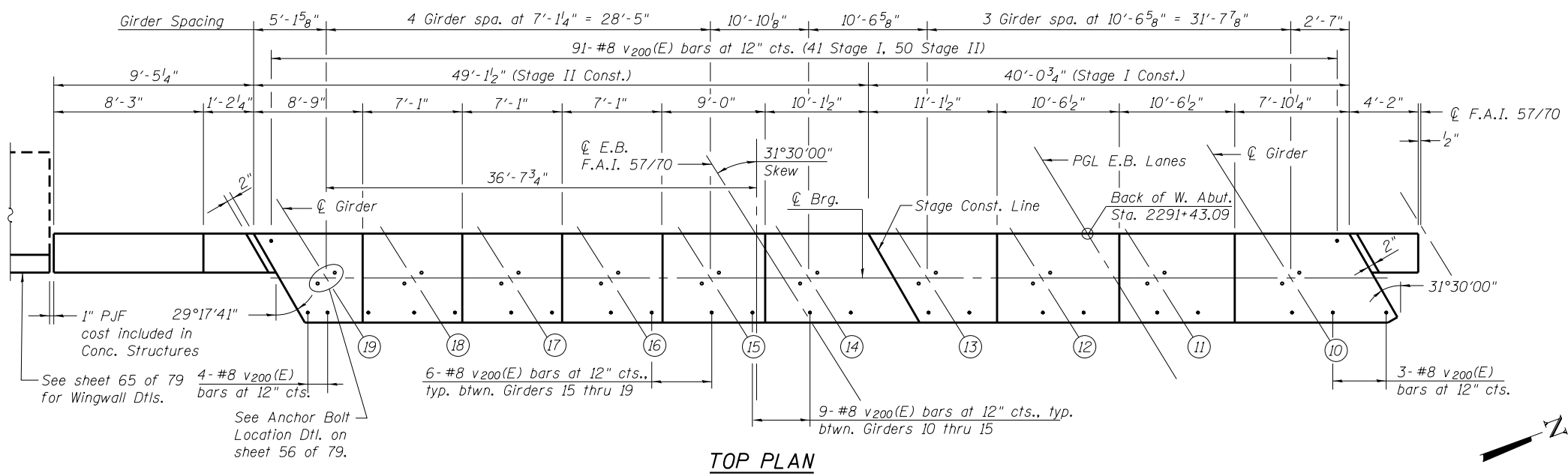


Bar	A	B	C
s202(E)	3'-2"	3'-0"	8"
s203(E)	3'-2"	3'-5"	8"
s205(E)	3'-2"	3'-0"	9"
s206(E)	3'-2"	3'-5"	9"

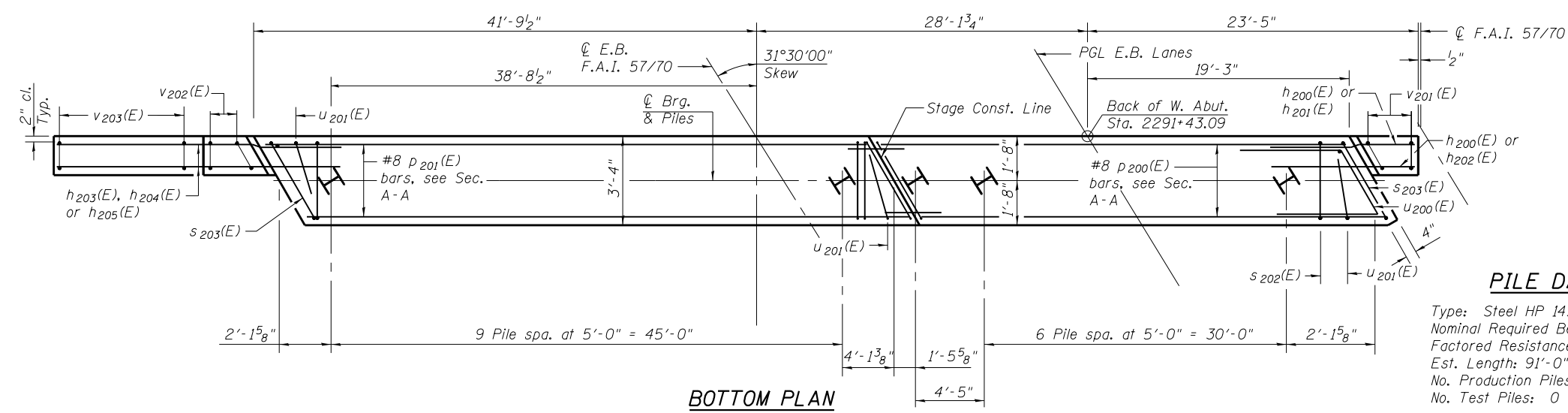


s(E) BAR s202(E) & s203(E)

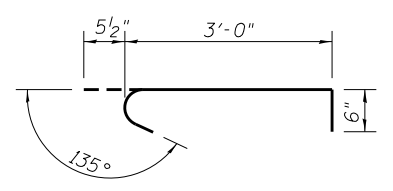
SEC. A-A  
Dimensions at right angles to abutment.



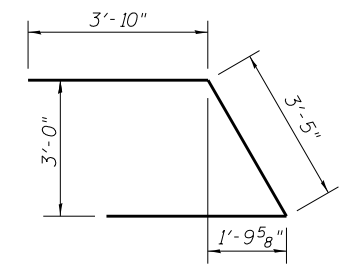
TOP PLAN



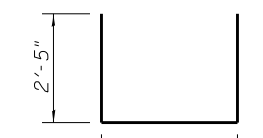
BOTTOM PLAN



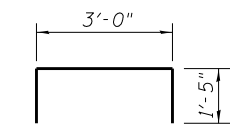
BAR s204(E)



BAR u200(E)



BAR u201(E)



BAR u202(E)

**PILE DATA**

Type: Steel HP 14x89  
 Nominal Required Bearing: 436K  
 Factored Resistance Available: 240K  
 Est. Length: 91'-0"  
 No. Production Piles: 18  
 No. Test Piles: 0

**BILL OF MATERIAL**

Bar	No.	Size	Length	Shape
h200(E)	14	#5	6'-5"	—
h201(E)	4	#5	3'-11"	—
h202(E)	4	#5	3'-3"	—
h203(E)	18	#7	12'-3"	—
h204(E)	2	#7	8'-2"	—
h205(E)	2	#7	9'-11"	—
P200(E)	14	#8	37'-8"	—
P201(E)	14	#8	50'-10"	—
P202(E)	4	#4	19'-3"	—
P203(E)	4	#4	29'-11"	—
s202(E)	103	#6	13'-8"	□
s203(E)	4	#6	14'-6"	□
s204(E)	36	#5	4'-0"	└
s205(E)	18	#4	2'-0"	≡
u200(E)	10	#8	11'-1"	└
u201(E)	3	#6	8'-0"	└
u202(E)	47	#4	5'-10"	└
v200(E)	167	#8	6'-6"	—
v201(E)	10	#5	13'-3"	—
v202(E)	4	#5	10'-2"	—
v203(E)	9	#5	17'-11"	—
Structure Excavation			Cu. Yd.	246
Concrete Structures			Cu. Yd.	47.5
Reinforcement Bars, Epoxy Coated			Pound	11,110
Furnishing - Piles, HP14x89			Foot	1638
Driving Piles			Foot	1638

\* Length is height of spiral.  
 Notes:  
 Pour steps monolithically with cap.  
 For details of piles see sheet 70 of 79.  
 See sheet 64 of 79 for Field Cutting Diagrams.  
 Order P202(E) & P203(E) bars full length and cut to fit.