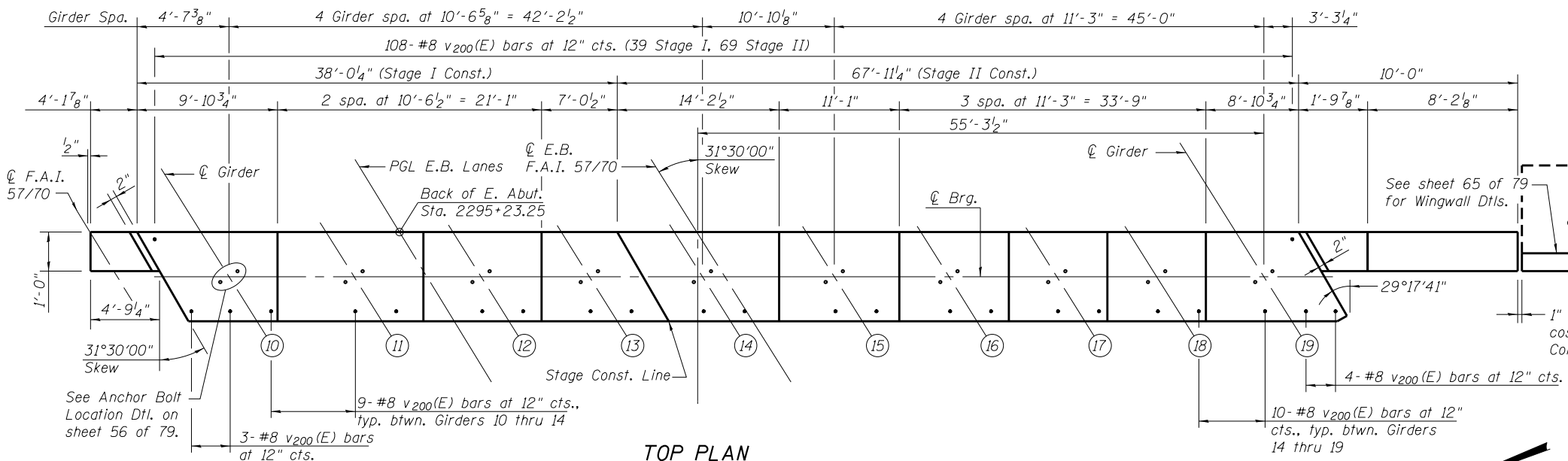
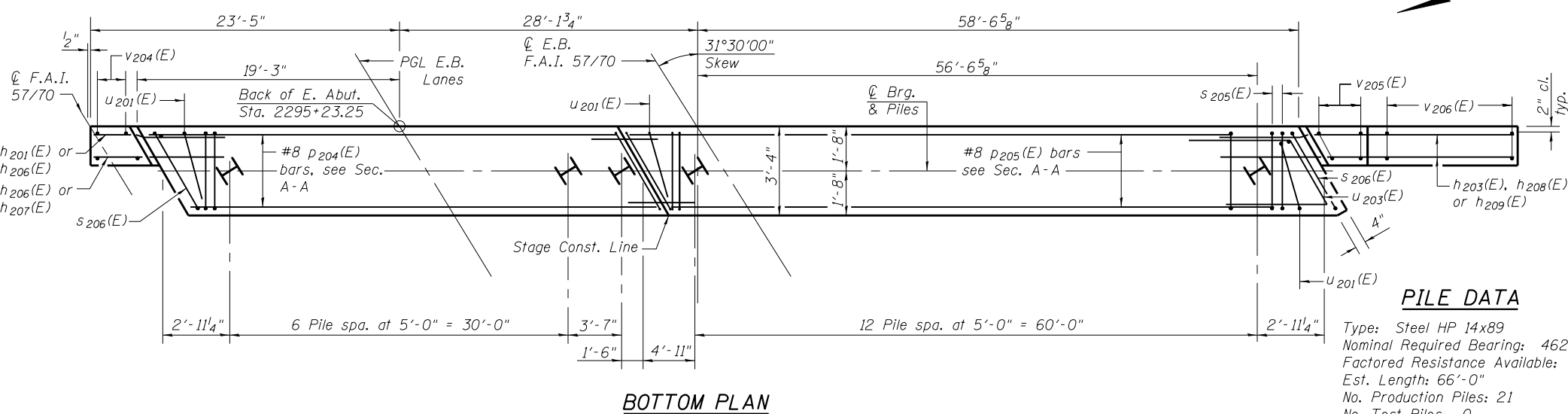


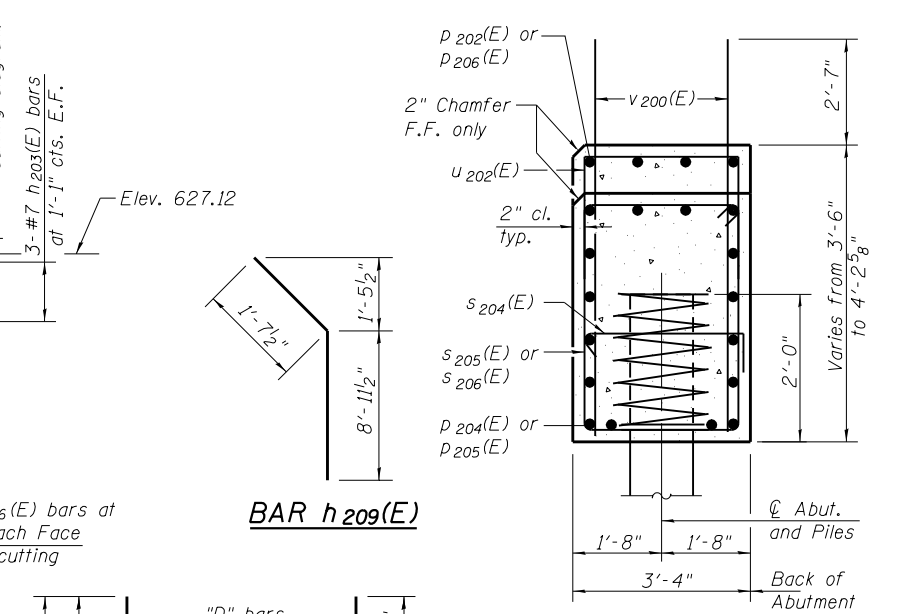
ELEVATION



TOP PLAN



BOTTOM PLAN



BAR h209(E)

SEC. A-A

Dimensions at right angles to abutment.

FIELD CUTTING DIAGRAM

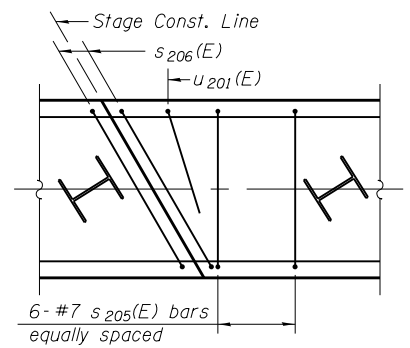
Order bars full length. Cut as shown and use remainder of bars in opposite face.

Bar	A	B	C	D
#7 h208(E)	15'-10"	5'-8"	10'-2"	3
#5 v203(E)	17'-11"	7'-9"	10'-2"	9
#5 v206(E)	16'-10"	6'-6"	10'-4"	9

BILL OF MATERIAL

Bar	No.	Size	Length	Shape
h201(E)	4	#5	3'-11"	—
h203(E)	14	#7	12'-3"	—
h206(E)	14	#5	7'-0"	—
h207(E)	4	#5	4'-3"	—
h208(E)	3	#7	15'-10"	—
h209(E)	2	#7	10'-7"	—
P202(E)	4	#4	19'-3"	—
P204(E)	16	#8	37'-8"	—
P205(E)	32	#8	36'-8"	—
P206(E)	4	#4	36'-2"	—
S204(E)	42	#5	4'-0"	□
S205(E)	124	#7	13'-10"	□
S206(E)	4	#7	14'-8"	□
SP200(E)	21	#4	2'-0"	≡≡≡
U201(E)	3	#6	8'-0"	—
U202(E)	53	#4	5'-10"	—
U203(E)	12	#8	11'-0"	—
V200(E)	201	#8	6'-6"	—
V204(E)	10	#5	13'-5"	—
V205(E)	4	#5	10'-6"	—
V206(E)	9	#5	16'-10"	—
Structure Excavation		Cu. Yd.	277	
Concrete Structures		Cu. Yd.	56.2	
Reinforcement Bars, Epoxy Coated		Pound	14,810	
Furnishing - Piles, HP14x89		Foot	1386	
Driving Piles		Foot	1386	

* Length is height of spiral.



STAGE CONST. JT. DETAIL

PILE DATA
 Type: Steel HP 14x89
 Nominal Required Bearing: 462K
 Factored Resistance Available: 254K
 Est. Length: 66'-0"
 No. Production Piles: 21
 No. Test Piles: 0

MINIMUM BAR LAP
 #8 bar = 5'-10"

Notes:
 Pour steps monolithically with cap.
 For details of piles see sheet 70 of 79.
 See sheet 63 of 79 for additional Bar Bends.
 Bars indicated thus 16x2-#8 etc. indicates 16 lines of bars with 2 bars per line.
 Order P202(E) & P206(E) bars full length and cut to fit.