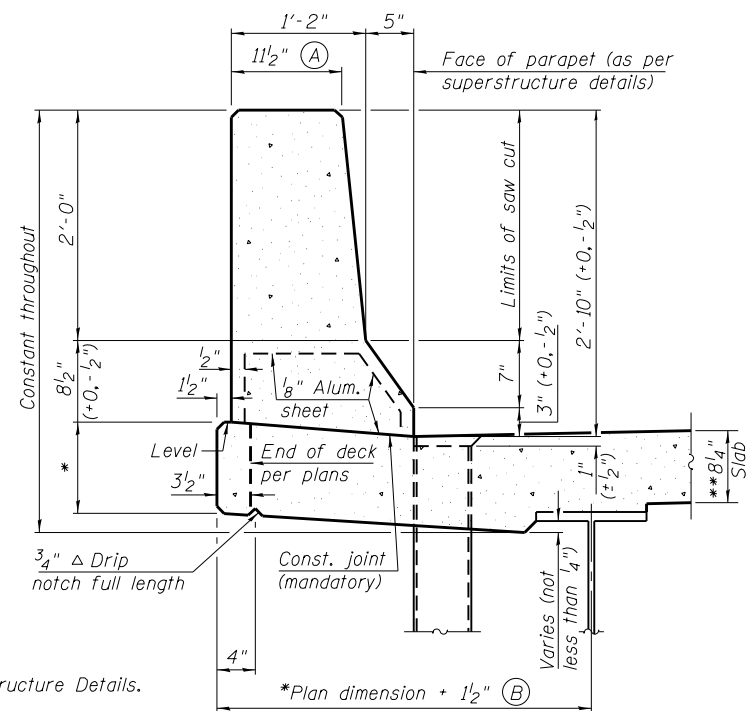


GENERAL NOTES

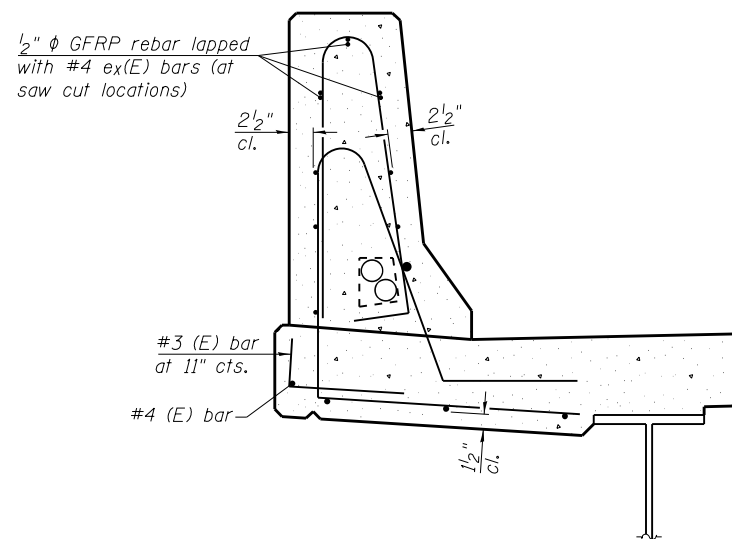
All dimensions shall remain the same as shown on superstructure details, except dimensions A and B which are to be revised as shown to provide additional clearance. Additional concrete needed to revise dimension A and B = 0.0165 cu. yds./ft. for 34" parapet or = 0.0223 cu. yds./ft. for 42" parapet. Place aluminum sheet in curb portion at and near piers. Full thickness saw cut at all joint locations in lieu of cork joint filler. Steel superstructure shown. Other superstructure types similar.



34" F SHAPE PARAPET SECTION
(Showing dimensions)

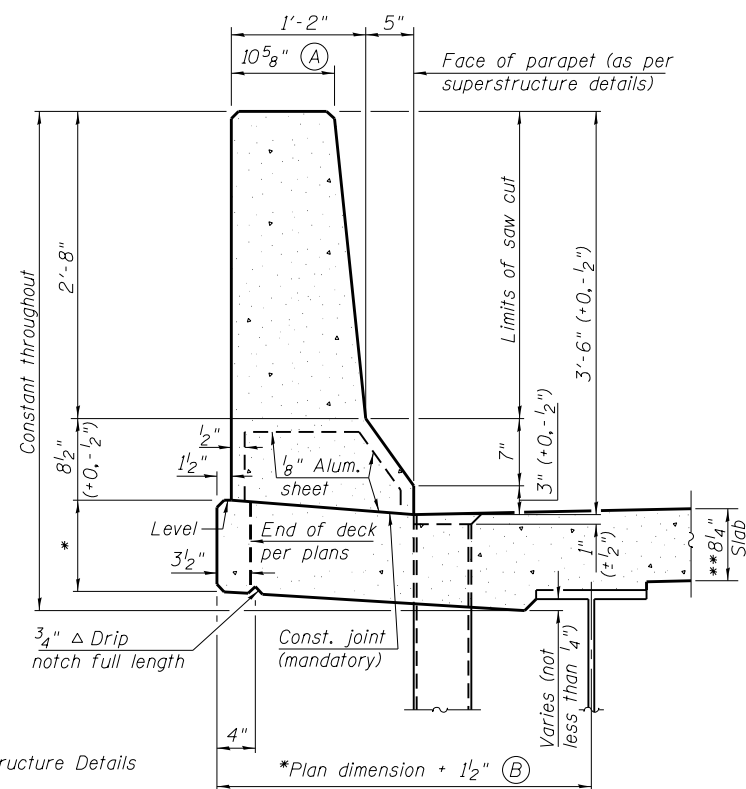
*See Superstructure Details.

**Prior to grinding according to Bridge Smoothness Specification



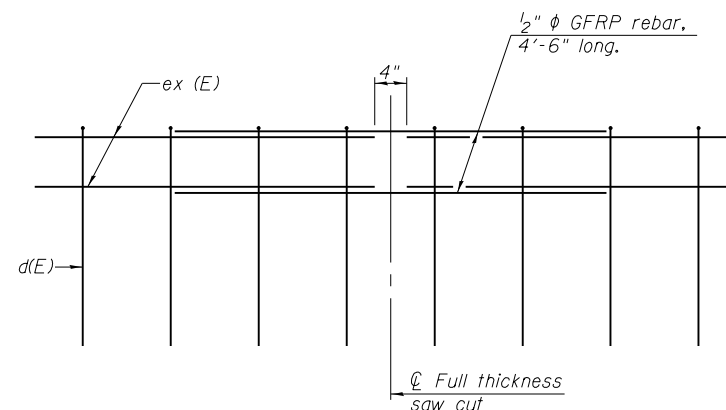
SECTION

(34" parapet shown - 42" parapet similar)
(Showing reinforcement clearances for slip forming and additional reinforcement bars)



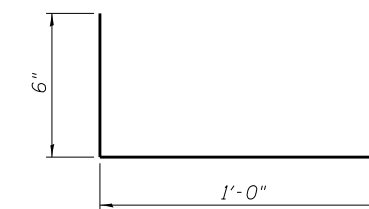
42" F SHAPE PARAPET SECTION
(Showing dimensions)

*See Superstructure Details

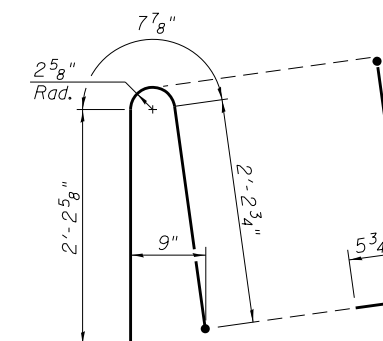


GFRP REBAR STIFFENING DETAIL

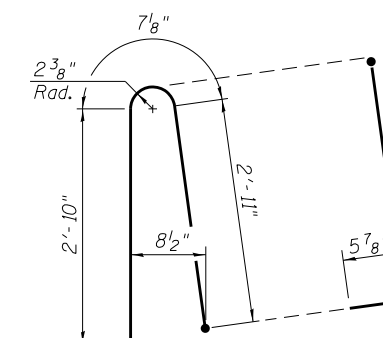
(Place as shown in parapet section at each parapet joint location.)



#3 (E) BAR



ALTERNATE BAR d(E)
(For 34" parapet when conduit is present)



ALTERNATE BAR d(E)
(For 42" parapet when conduit is present)

FILE NAME = 025011-74295-069-Slipform Parapet BERNARDSON • LOCHMUELLER & ASSOCIATES, INC. 3 OAK DRIVE MARYVILLE, ILLINOIS 62962 PHONE (618) 288-6665 FAX (618) 288-6666	DESIGNER NAME = bbovee Illinois Design Firm Number 184.001670	DESIGNED - BB CHECKED - ACS DRAWN - WJS CHECKED - CJF	REVISED REVISED REVISED REVISED	STATE OF ILLINOIS DEPARTMENT OF TRANSPORTATION	CONCRETE PARAPET SLIPFORMING OPTION STRUCTURE NO. 025-0111 (WB) & 025-0112 (EB)	F.A.I. R.T.E. = 57/70	SECTION = (25-4HVB-1)BY	COUNTY = EFFINGHAM	TOTAL SHEETS = 1760	SHEET NO. = 604
	PLOT SCALE = PLOT DATE = 3:26:36 PM 8/14/2013	SHEET NO. 69 OF 79 SHEETS	CONTRACT NO. 74295			ILLINOIS FED. AID PROJECT				