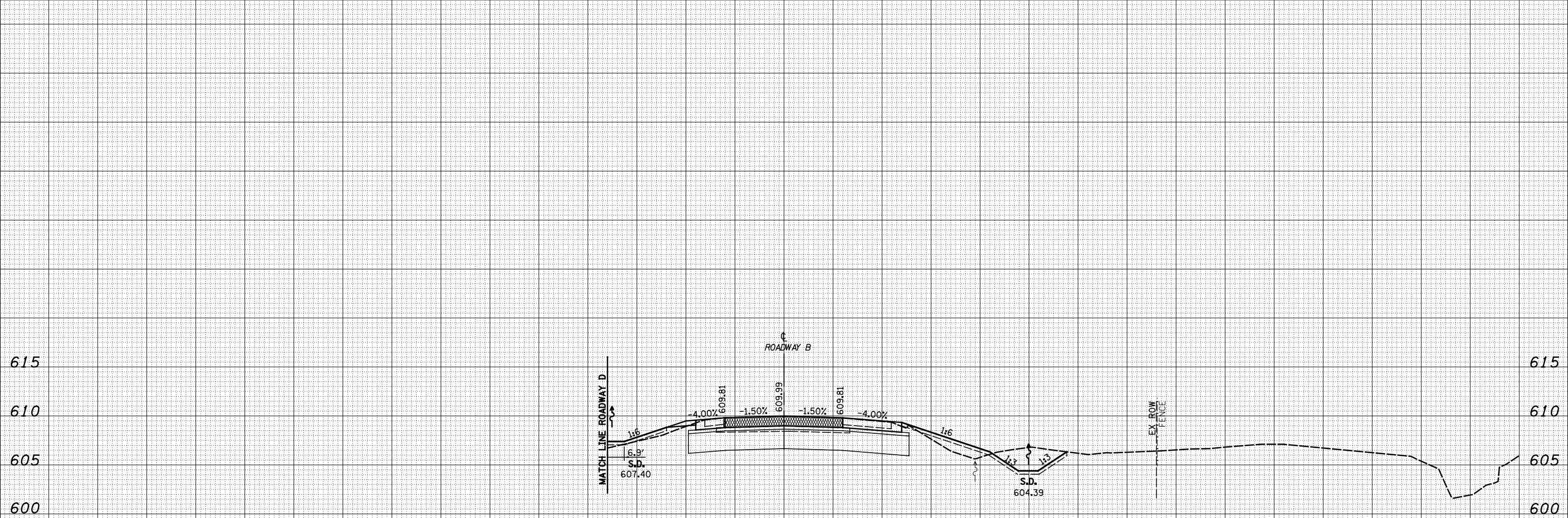


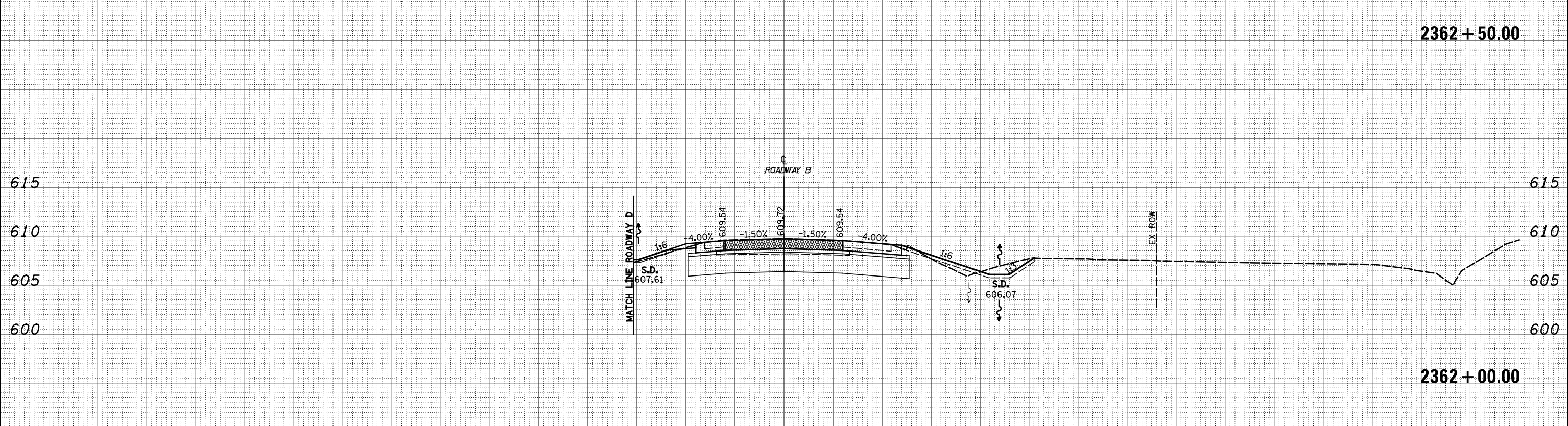
150 140 130 120 110 100 90 80 70 60 50 40 30 20 10 0 10 20 30 40 50 60 70 80 90 100 110 120 130 140 150

DATE	
BY	
FINAL SURVEY	SURVEYED
NOTE BOOK	PLOTTED
NO.	AREAS CHECKED



2362 + 50.00

DATE	
BY	
ORIGINAL SURVEY	SURVEYED
NOTE BOOK	PLOTTED
NO.	AREAS CHECKED



2362 + 00.00

150 140 130 120 110 100 90 80 70 60 50 40 30 20 10 0 10 20 30 40 50 60 70 80 90 100 110 120 130 140 150

FILE NAME = S:\Projects\43-00072-57-70\dp\11\Ink\resh170008.dgn

USER NAME = *USERS*	DESIGNED - JWS	REVISED -
	DRAWN - SGK	REVISED -
PLOT SCALE = *SCALE*	CHECKED - BRM	REVISED -
PLOT DATE = *DATE*	DATE - 3-25-08	REVISED -

STATE OF ILLINOIS
DEPARTMENT OF TRANSPORTATION

CROSS SECTIONS NORTH TRI LEVEL - ROADWAY B

SCALE: 1"=10' SHEET NO. 19 OF 56 SHEETS STA. 2362+00.00 TO STA. 2362+50.00

F.A. RTE.	SECTION	COUNTY	TOTAL SHEETS	SHEET NO.
57/70	(25-4)R	EFFINGHAM	1760	737
FED. ROAD DIST. NO.			ILLINOIS FED. AID PROJECT	
			CONTRACT NO. 74295	