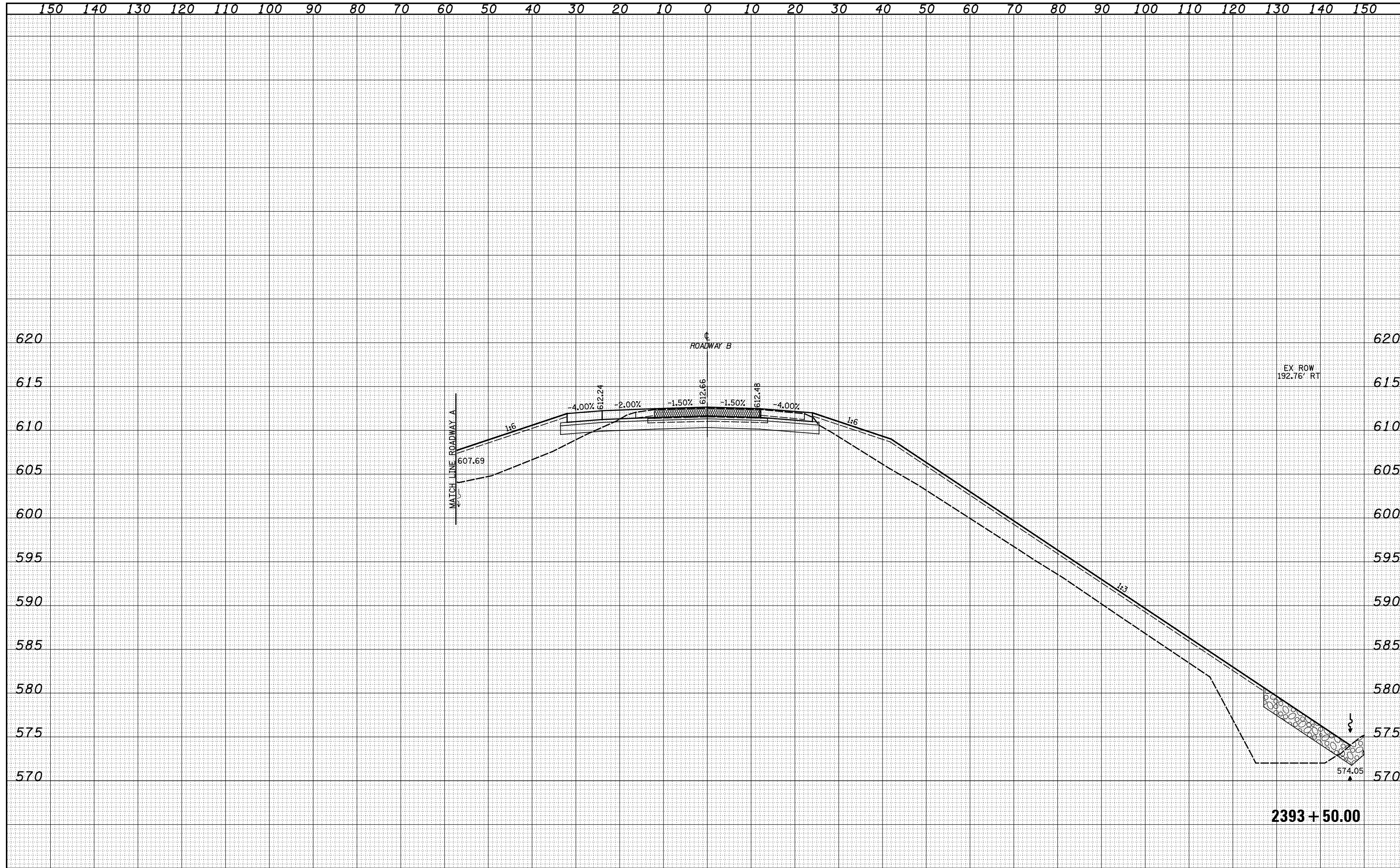


DATE	
BY	
SURVEYED	
PLOTTED	
TEMPLATE	
AREAS	
CHECKED	
FINAL SURVEY	
NOTE BOOK	
NO.	

DATE	
BY	
SURVEYED	
PLOTTED	
TEMPLATE	
AREAS	
CHECKED	
ORIGINAL SURVEY	
NOTE BOOK	
NO.	



2393 + 50.00

FILE NAME =	USER NAME = *USERS*	DESIGNED - JWS	REVISED -	STATE OF ILLINOIS DEPARTMENT OF TRANSPORTATION	CROSS SECTIONS NORTH TRI LEVEL - ROADWAY B			F.A. RTE.	SECTION	COUNTY	TOTAL SHEETS	SHEET NO.
S:\Projects\43-00072.57-70.dgn\11 In.\cross\110008.dgn		DRAWN - SGK	REVISED -		57/70	(25-4)R	EFFINGHAM	1760	768			
		CHECKED - BRM	REVISED -		SCALE: 1"=10' SHEET NO. 50 OF 56 SHEETS STA. 2393+50.00 TO STA. 2393+50.00			CONTRACT NO. 74295				
		DATE - 3-25-08	REVISED -		FED. ROAD DIST. NO.		ILLINOIS FED. AID PROJECT					