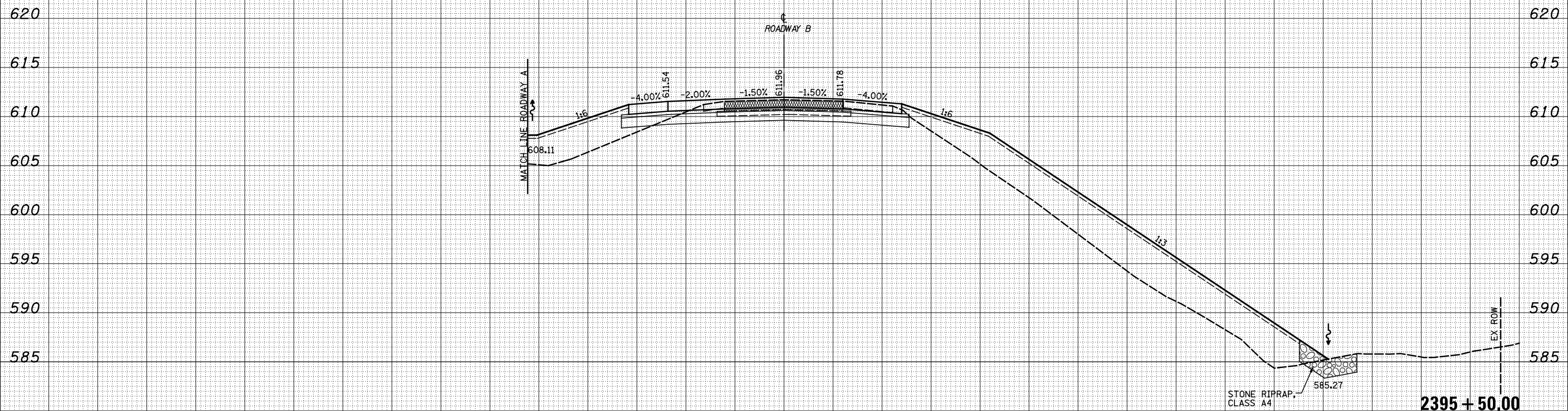


150 140 130 120 110 100 90 80 70 60 50 40 30 20 10 0 10 20 30 40 50 60 70 80 90 100 110 120 130 140 150

DATE	BY	SURVEYED	PLOTTED
		NOTE BOOK	TEMPLATE
		AREAS	AREAS
		CHECKED	CHECKED

DATE	BY	ORIGINAL	SURVEYED
		NOTE BOOK	PLOTTED
		AREAS	AREAS
		CHECKED	CHECKED



150 140 130 120 110 100 90 80 70 60 50 40 30 20 10 0 10 20 30 40 50 60 70 80 90 100 110 120 130 140 150

FILE NAME = S:\Projects\03-00072-57-70\dp\11\Ink\cross\110008.dgn

USER NAME = \*USERS\*  
 DESIGNED - JWS  
 DRAWN - SGK  
 CHECKED - BRM  
 DATE - 3-25-08

REVISED -  
 REVISED -  
 REVISED -  
 REVISED -

STATE OF ILLINOIS  
 DEPARTMENT OF TRANSPORTATION

CROSS SECTIONS NORTH TRI LEVEL - ROADWAY B

SCALE: 1"=10' SHEET NO. 54 OF 56 SHEETS STA. 2395+50.00 TO STA. 2395+50.00

F.A. RTE.	SECTION	COUNTY	TOTAL SHEETS	SHEET NO.
57/70	(25-4)R	EFFINGHAM	1760	772
FED. ROAD DIST. NO. ILLINOIS FED. AID PROJECT			CONTRACT NO. 74295	