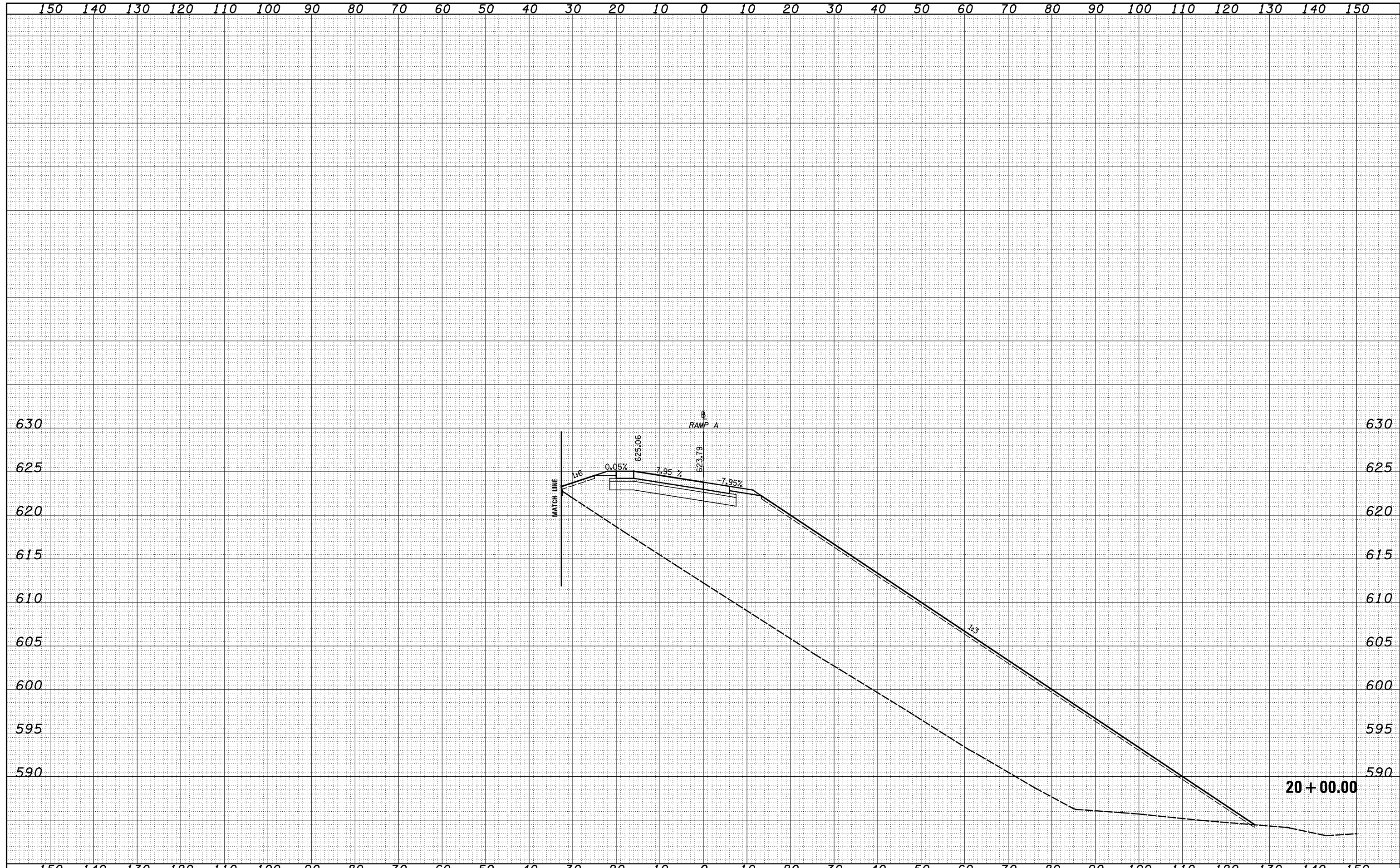


DATE	
BY	
SURVEYED	
PLOTTED	
TEMPLATE	
AREAS	
CHECKED	
FINAL SURVEY	
NOTE BOOK	
NO.	

DATE	
BY	
SURVEYED	
PLOTTED	
TEMPLATE	
AREAS	
CHECKED	
ORIGINAL SURVEY	
NOTE BOOK	
NO.	



FILE NAME =	USER NAME = *USER*	DESIGNED -	REVISIED -	STATE OF ILLINOIS DEPARTMENT OF TRANSPORTATION	CROSS SECTIONS - US 45 - RAMP A			F.A. RTE.	SECTION	COUNTY	TOTAL SHEETS	SHEET NO.
S:\Projects\403-00072.57-70\dgn\N Tr\ILV\ksah45a.dgn		DRAWN - LEC	REVISIED -		SCALE: 1"=10'	SHEET NO. 20 OF 25 SHEETS	STA. 20+00.00 TO STA. 20+00.00	57/70	(25-3,4R)	EFFINGHAM	1760	827
		CHECKED -	REVISIED -					CONTRACT NO. 74295				
		DATE -	REVISIED -					FED. ROAD DIST. NO. ILLINOIS FED. AID PROJECT				