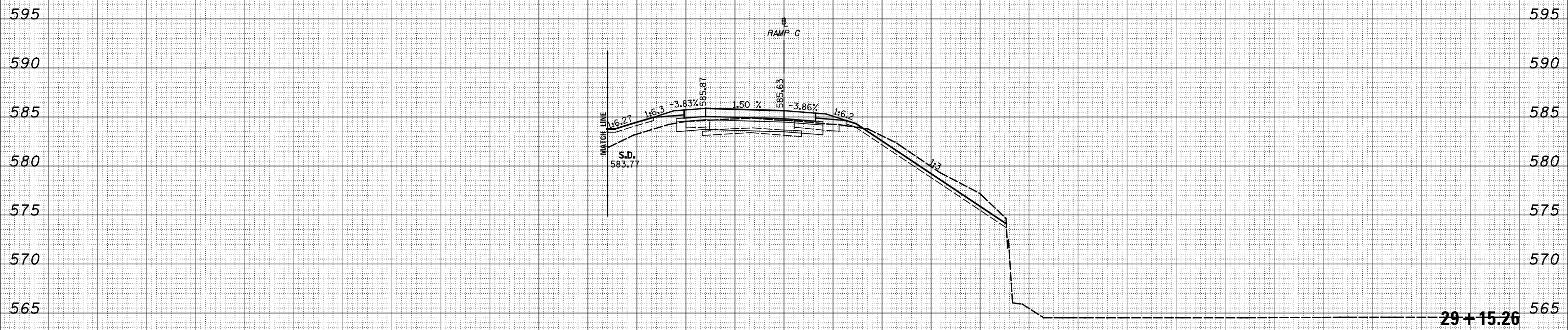


150 140 130 120 110 100 90 80 70 60 50 40 30 20 10 0 10 20 30 40 50 60 70 80 90 100 110 120 130 140 150

DATE	BY	SURVEYED	PLOTTED
		NOTE BOOK	TEMPLATE
		AREAS	AREAS
		CHECKED	CHECKED

DATE	BY	SURVEYED	PLOTTED
		NOTE BOOK	TEMPLATE
		AREAS	AREAS
		CHECKED	CHECKED



150 140 130 120 110 100 90 80 70 60 50 40 30 20 10 0 10 20 30 40 50 60 70 80 90 100 110 120 130 140 150

FILE NAME = S:\Projects\403-00072.57-70\dgn\Tr\ILV\ksah45C.dgn

USER NAME = *USER*	DESIGNED -	REVISIED -
	DRAWN - LEC	REVISIED -
PLOT SCALE = *SCALE*	CHECKED -	REVISIED -
PLOT DATE = *DATE*	DATE -	REVISIED -

STATE OF ILLINOIS
DEPARTMENT OF TRANSPORTATION

CROSS SECTIONS - US 45 - RAMP C
SCALE: 1"=10'
SHEET NO. 29 OF 31 SHEETS
STA. 29+15.26 TO STA. 29+15.26

F.A.I. RTE.	SECTION	COUNTY	TOTAL SHEETS	SHEET NO.
57/70	(25-3,4R)	EFFINGHAM	1760	894
FED. ROAD DIST. NO.			ILLINOIS FED. AID PROJECT	
			CONTRACT NO. 74295	