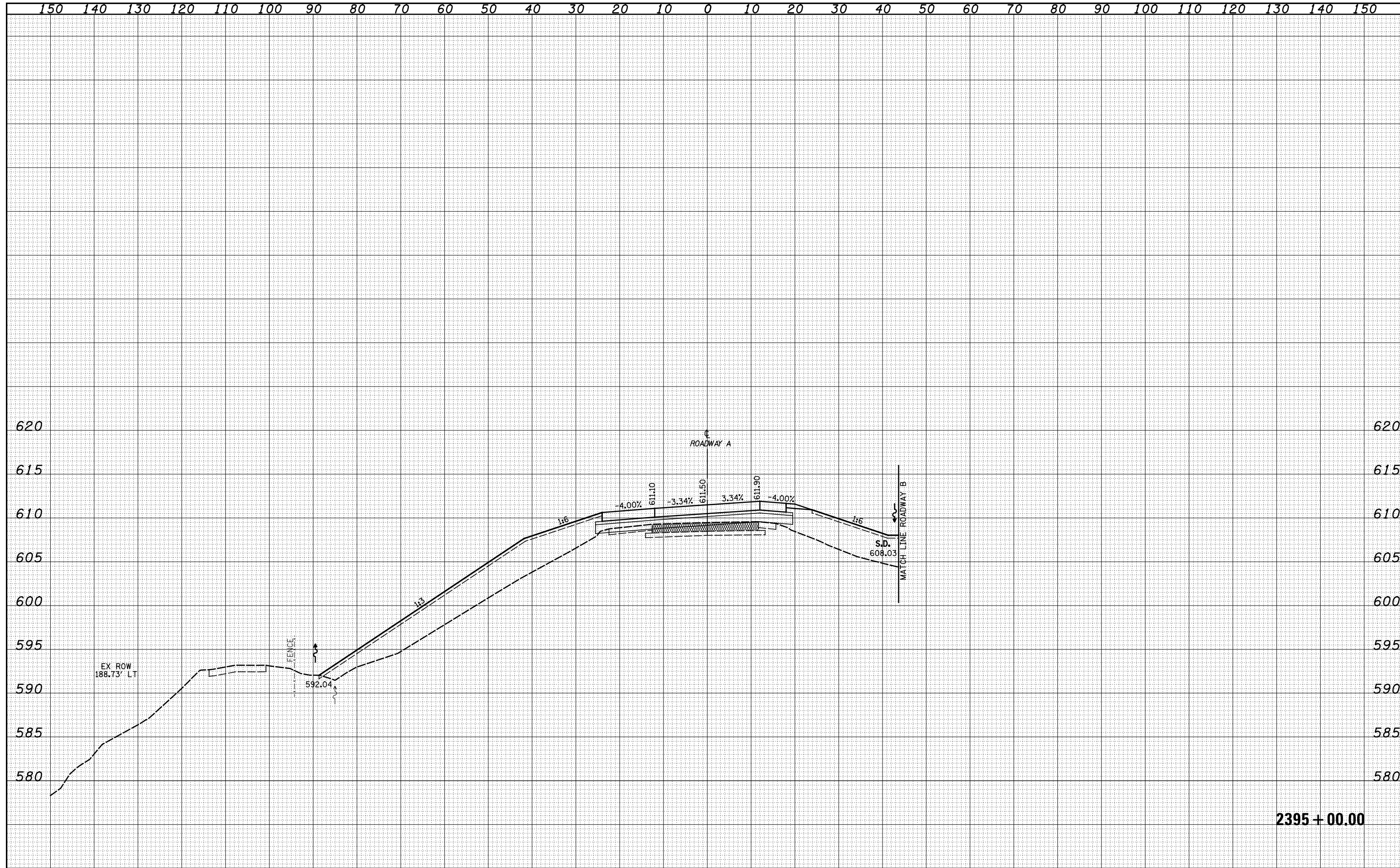


DATE	
BY	
SURVEYED	
PLOTTED	
TEMPLATE	
AREAS	
CHECKED	
FINAL SURVEY	
NOTE BOOK	
NO.	

DATE	
BY	
SURVEYED	
PLOTTED	
TEMPLATE	
AREAS	
CHECKED	
ORIGINAL SURVEY	
NOTE BOOK	
NO.	



2395 + 00.00

FILE NAME = S:\Projects\03-00072-57-70.dgn  
 USER NAME = \*USERS\*

DESIGNED - JWS  
 DRAWN - SGK  
 CHECKED - BRM  
 DATE - 3-25-08

REVISED -  
 REVISED -  
 REVISED -  
 REVISED -

STATE OF ILLINOIS  
 DEPARTMENT OF TRANSPORTATION

CROSS SECTIONS NORTH TRI LEVEL - ROADWAY A

SCALE: 1"=10' SHEET NO. 57 OF 61 SHEETS STA. 2395+00.00 TO STA. 2395+00.00

F.A.T. RTE.	SECTION	COUNTY	TOTAL SHEETS	SHEET NO.
57/70	(25-4)R	EFFINGHAM	1760	985
FED. ROAD DIST. NO.			ILLINOIS FED. AID PROJECT	
			CONTRACT NO. 74295	