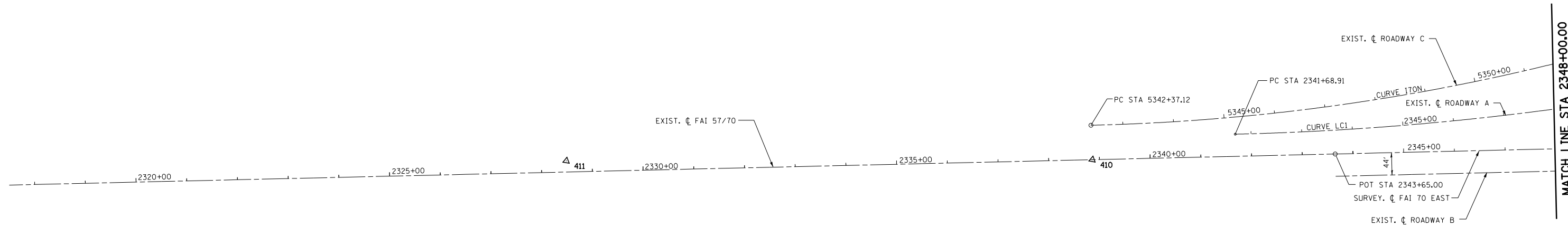


EXIST. ROADWAY C
 EXIST. CURVE I70N
 PI STA. = 5375+89.51
 $\Delta = 76^\circ 35' 42''$ (LT)
 D = 1° 20' 59"
 R = 4,245.24'
 T = 3,352.39'
 L = 5,675.19'
 E = 1,164.07'
 e = 4.30%
 T.R. = 45.00'
 S.E. RUN = 129.00'
 P.C. STA. = 5342+37.12
 P.T. STA. = 5399+12.31

EXIST. ROADWAY A
 EXIST. CURVE LC1
 PI STA. = 2348+47.05
 $\Delta = 13^\circ 30' 00''$ (LT)
 D = 1° 00' 00"
 R = 5,729.58'
 T = 678.14'
 L = 1,350.00'
 E = 39.99'
 P.C. STA. = 2341+68.91
 P.T. STA. = 2355+18.91



CONTROL POINTS

CONTROL POINT	COORDINATE	
	NORTHING	EASTING
411	903249.41	930740.84
410	903431.80	931761.76

BENCHMARK # 503:

CHISELED SQUARE ON SIGN BASE ON
 S. SIDE OF I-57/70
 STA. 2333+48.00 87.4' RT
 ELEV 598.14

BENCHMARK # 502:

CHISELED SQUARE ON DRAIN S.
 SIDE OF I-57 ON RAMP (N. TRI-LEVEL)
 STA. 2347+50.00 55.6' LT
 ELEV 594.54

BENCHMARK # 501:

CHISELED SQUARE ON LIGHT POLE
 BASE N. SIDE I-57/70
 STA. 2345+08.00 44.0' LT
 ELEV 590.10

EXISTING FAI-57/70

DESCRIPTION	COORDINATE	
	NORTHING	EASTING
POT STA 2343+65.00	903526.02	932231.43

SURVEY FAI 70 EAST

DESCRIPTION	COORDINATE	
	NORTHING	EASTING
POT STA 2343+65.00	903526.02	932231.43
POT STA 2372+66.30	904096.74	935076.05
POT STA 2397+00.73	904575.79	937462.87

**EXISTING NORTH TRI
LEVEL ROADWAY C**

DESCRIPTION	COORDINATE	
	NORTHING	EASTING
PC STA 5342+37.12	903498.25	931747.32
PI STA 5375+89.51	904157.70	935034.21
PT STA 5399+12.31	907507.92	935154.73

**EXISTING NORTH TRI
LEVEL ROADWAY A**

DESCRIPTION	COORDINATE	
	NORTHING	EASTING
PC STA 2341+68.91	903530.29	932030.56
PI STA 2348+47.05	903663.74	932695.44
PT STA 2355+18.91	903948.72	933310.79



FILE NAME =	USER NAME = *USER*	DESIGNED - JWS	REVISED -
S:\Project\03\000725170.dgn\B-Road\Work\Doc\Title.dwg		DRAWN - MAB	REVISED -
	PLOT SCALE = *SCALE*	CHECKED - BRM	REVISED -
	PLOT DATE = *DATE*	DATE - 8-01-08	REVISED -

**STATE OF ILLINOIS
DEPARTMENT OF TRANSPORTATION**

HORIZONTAL CONTROL, FAI ROUTES 57/70, NORTH TRI LEVEL

SCALE: 1"=100' SHEET NO. 1 OF 5 SHEETS STA. 2317+50.00 TO STA. 2348+00.00

F.A.I. RTE.	SECTION	COUNTY	TOTAL SHEETS	SHEET NO.
57/70	(25-4)BR	EFFINGHAM	1760	1665
FED. ROAD DIST. NO.			ILLINOIS FED. AID PROJECT	
			CONTRACT NO. 74295	