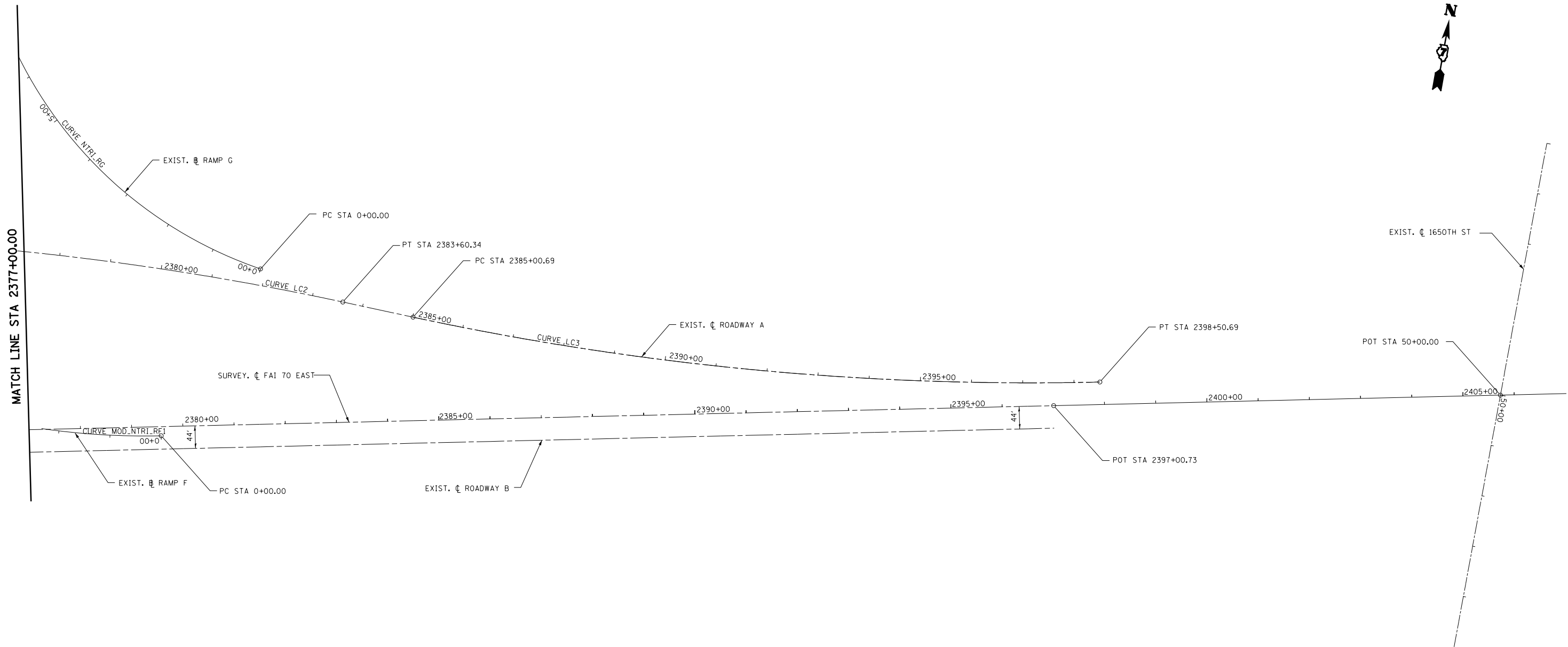


EXIST. RAMP F EXIST. CURVE MOD_NTRI_RF1 PI STA. = 4+77.23 Δ = 37° 42' 09" (RT) D = 4° 05' 57" R = 1,397.76' T = 477.23' L = 919.77' E = 79.22' P.C. STA. = 0+00.00 P.C.C. STA. = 9+19.77	EXIST. RAMP G EXIST. CURVE NTRI_RG PI STA. = 7+19.90 Δ = 82° 21' 33" (RT) D = 6° 57' 45" R = 822.93' T = 719.90' L = 1,182.91' E = 270.45' P.C. STA. = 0+00.00 P.T. STA. = 11+82.91	EXIST. ROADWAY A EXIST. CURVE LC3 PI STA. = 2391+78.84 Δ = 13° 30' 00" (LT) D = 1° 00' 00" R = 5,729.58' T = 678.14' L = 1,350.00' E = 39.99' P.C. STA. = 2385+00.69 P.T. STA. = 2398+50.69	EXIST. ROADWAY A EXIST. CURVE LC2 PI STA. = 2370+35.89 Δ = 27° 00' 00" (RT) D = 1° 00' 00" R = 5,729.58' T = 1,375.55' L = 2,700.00' E = 162.81' P.C. STA. = 2356+60.34 P.T. STA. = 2383+60.34
--	---	---	--



EXISTING NORTH TRI LEVEL ROADWAY A

DESCRIPTION	COORDINATE	
	NORTHING	EASTING
PC STA 2356+60.34	904007.71	933438.16
PI STA 2370+35.89	904585.77	934686.35
PT STA 2383+60.34	904534.15	936060.93
PC STA 2385+00.69	904528.89	936201.19
PI STA 2391+78.84	904503.44	936878.85
PT STA 2398+50.69	904636.90	937543.73

SURVEY CL FAI 70 EAST

DESCRIPTION	COORDINATE	
	NORTHING	EASTING
POT STA 2397+00.73	904575.79	937462.87
POT STA 2416+99.66	904969.17	939422.71
POT STA 2437+00.92	905362.54	941384.93

EXISTING NORTH TRI LEVEL RAMP F

DESCRIPTION	COORDINATE	
	NORTHING	EASTING
PC STA 0+00.00	904215.28	935757.05
PI STA 4+77.23	904121.10	935289.21
PCC STA 9+19.77	904332.70	934861.45
PCC STA 9+19.77	904332.70	934861.45
PI STA 15+63.72	904618.22	934284.26
PT STA 19+60.65	905216.95	934521.30

EXISTING NORTH TRI LEVEL RAMP G

DESCRIPTION	COORDINATE	
	NORTHING	EASTING
PC STA 0+00.00	904569.89	935891.51
PI STA 7+19.90	904680.46	935180.15
PT STA 11+82.91	905400.21	935195.16

EXISTING 1650TH STREET

DESCRIPTION	COORDINATE	
	NORTHING	EASTING
POT STA 45+00.00	905247.48	938222.09
POT STA 50+00.00	904747.50	938318.33
POT STA 55+00.00	904247.51	938314.57

BENCHMARK * 4:
CHISELED SQUARE SOUTH CONCRETE FOUNDATION
TO OVERHEAD SIGN TRUSS I-70 WB
APPROXIMATE STA. 2383+00.00 RT
ELEV 605.28

