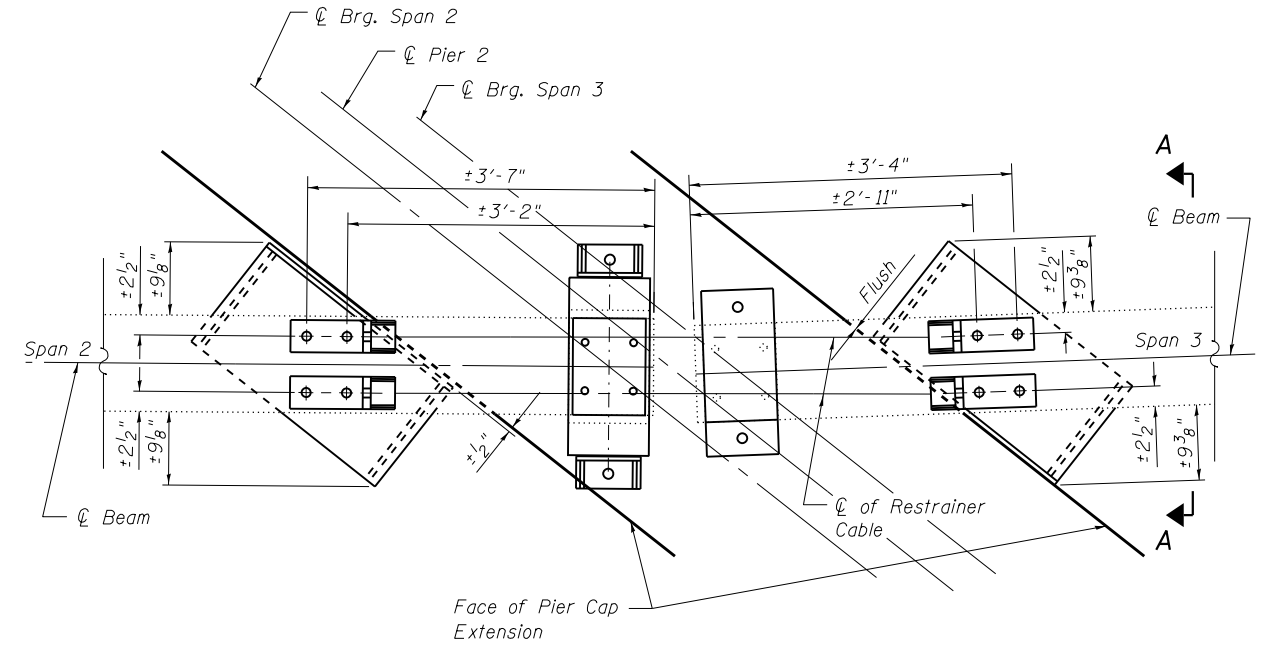


**RESTRAINER
INDICATOR END**

**RESTRAINER
BOLTED END**

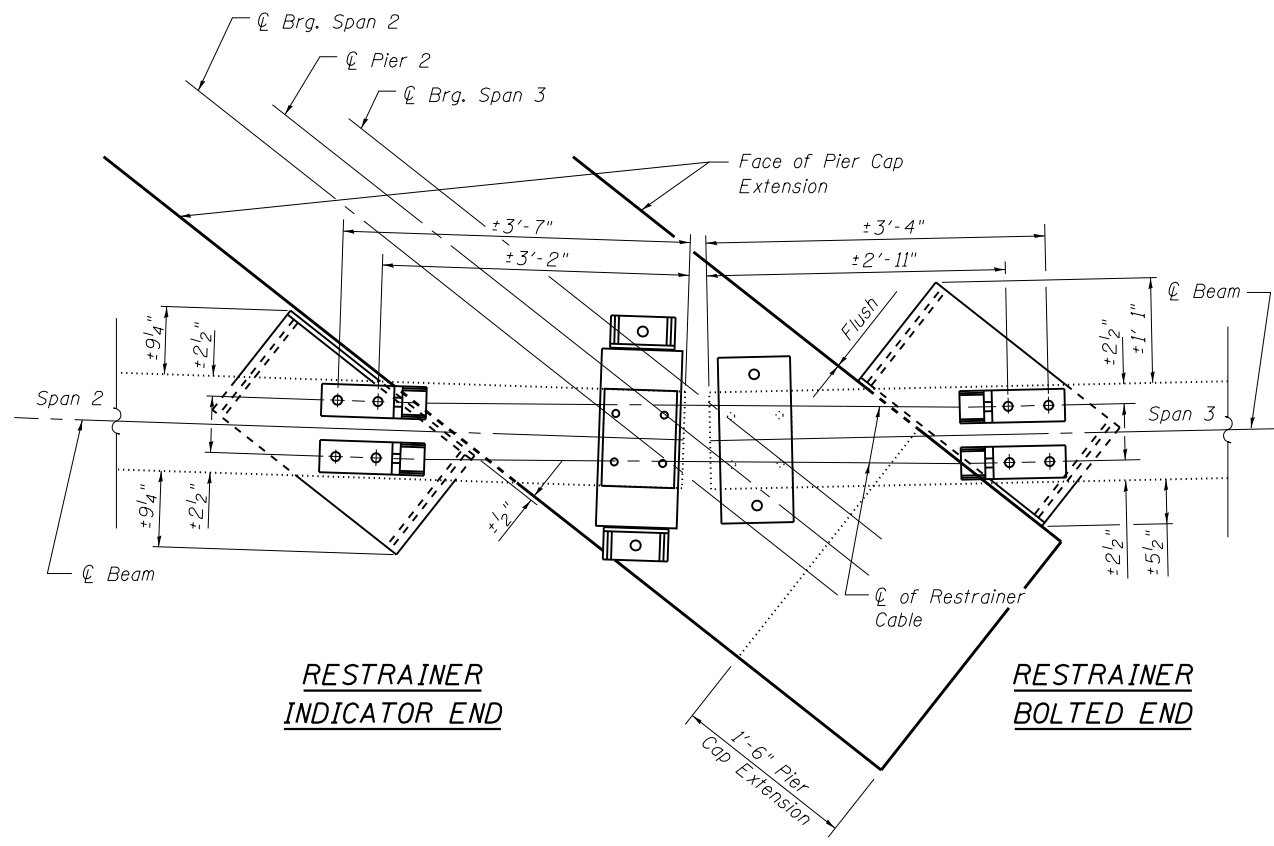
PIER 2 PLAN
(Beam 6)
(1 Required)



**RESTRAINER
INDICATOR END**

**RESTRAINER
BOLTED END**

PIER 2 PLAN
(Beams 2-5)
(4 Required)



**RESTRAINER
INDICATOR END**

**RESTRAINER
BOLTED END**

PIER 2 PLAN
(Beam 1)
(1 Required)

Notes:
For General Elevation Views of Seismic Restrainers, see Sections B-B and C-C on Sheet 3 of 28.
Seismic Restrainer shall be placed on each beam line.
One hardened washer and one lock washer are required for each set of oversized holes.
Bumpers shall be paid for as Furnishing and Erecting Structural Steel.
See sheet 13 of 28 for Section A-A.
See sheet 26 of 28 for Pier 2 Cap Extension Details.

FILE NAME = 0250002-74295-014.dgn  BERNHARZEN LOCHMULLER & ASSOCIATES, INC. 3 OAK DRIVE MARYVILLE, ILLINOIS 62442 PHONE (618) 281-4666 FAX (618) 288-4666	USER NAME =	DESIGNED - BB CHECKED - ACS	REVISED - REVISED - REVISED - REVISED -	STATE OF ILLINOIS DEPARTMENT OF TRANSPORTATION	BUMPER DETAILS PIER 2 STRUCTURE NO. 025-0002	F.A.I. RTE. = 57	SECTION = (25-4HB)I-4	COUNTY = EFFINGHAM	TOTAL SHEETS = 1760	SHEET NO. = 1691
	PLOT SCALE =	DRAWN - WJS CHECKED - CJF & BB	PLOT DATE = 1:56:01 PM 8/15/2013			SHEET NO. 14 OF 28 SHEETS	SN 025-0002	CONTRACT NO. 74295	FED. ROAD DIST. NO. 7 ILLINOIS FED. AID PROJECT	