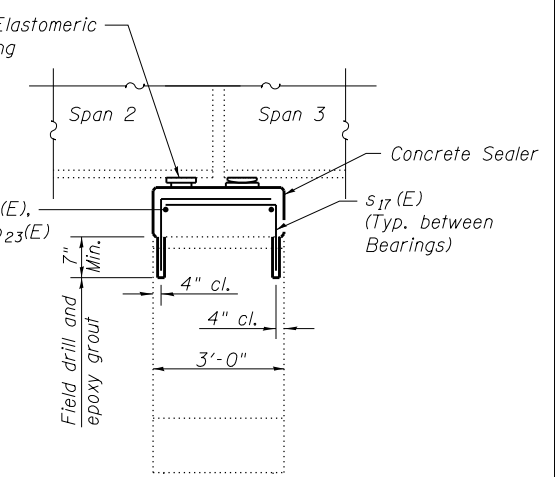
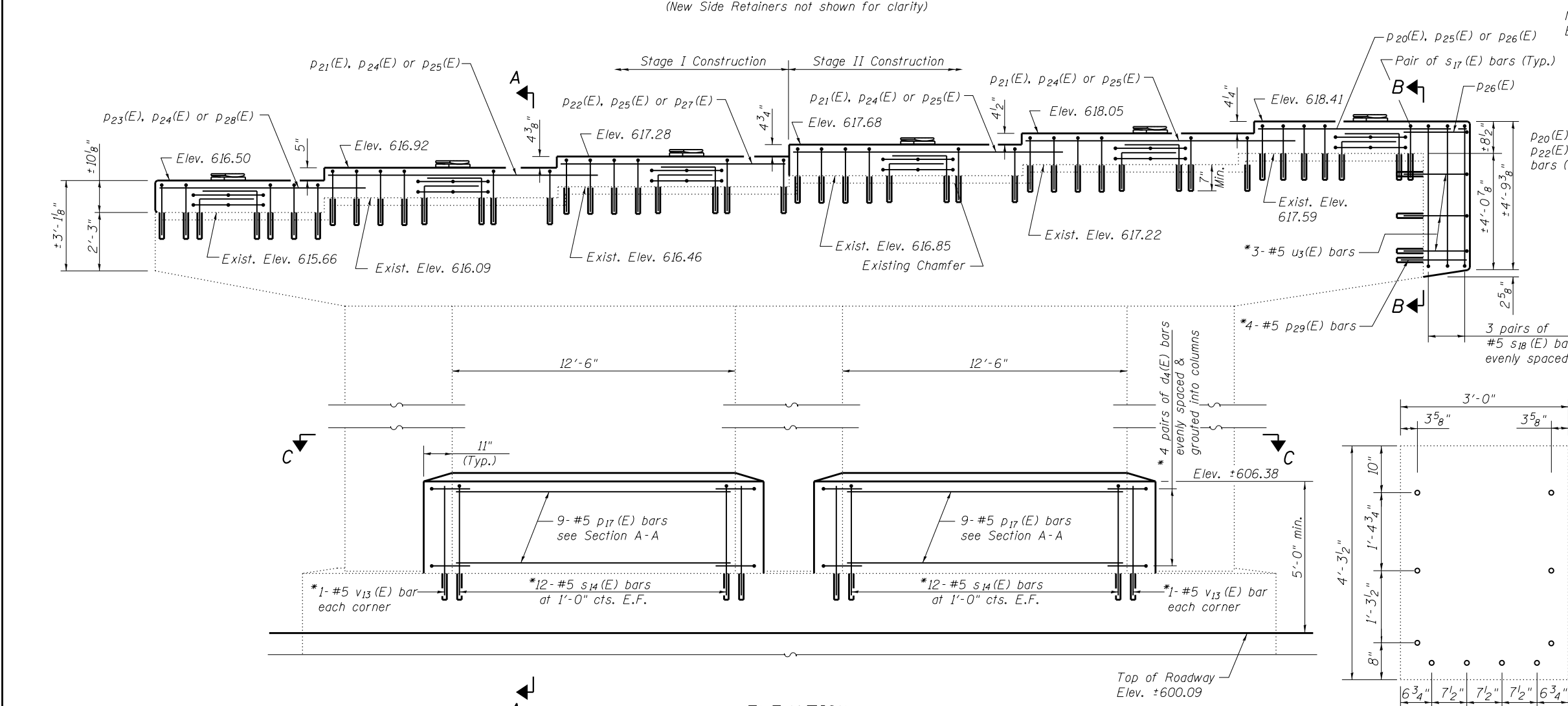
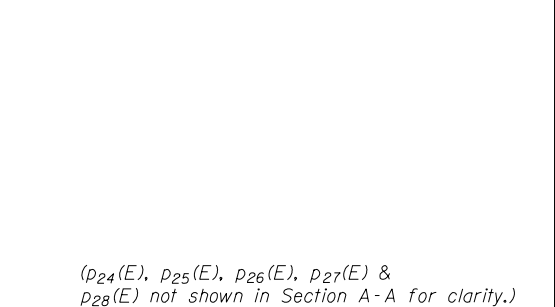


Notes:
 For Detail A see Sheet 27 of 28
 For View C-C see Sheet 27 of 28.
 Bars shall be drilled and grouted according to Section 584 of the Standard Specifications.
 Concrete Sealer shall be applied only to exposed surface of the new concrete on Pier 2.



*Field drill and epoxy grout, 7" min. embedment.

FILE NAME = 0250002-74295-026.dgn
 USER NAME =
 DESIGNED - BB
 CHECKED - ACS
 PLOT SCALE =
 PLOT DATE = 1:56:18 PM 8/15/2013

DESIGNED - BB
 CHECKED - ACS
 DRAWN - WJS
 CHECKED - CJF & BB

REVISED -
 REVISED -
 REVISED -
 REVISED -

STATE OF ILLINOIS
 DEPARTMENT OF TRANSPORTATION

PIER 2 GENERAL PLAN
 STRUCTURE NO. 025-0002
 SHEET NO. 26 OF 28 SHEETS

| | | | | |
|---|-------------|--------------------|--------------|-----------|
| F.A.I. RE. | SECTION | COUNTY | TOTAL SHEETS | SHEET NO. |
| 57 | (25-4HB)I-4 | EFFINGHAM | 1760 | 1703 |
| SN 025-0002 | | CONTRACT NO. 74295 | | |
| FED. ROAD DIST. NO. 7 ILLINOIS FED. AID PROJECT | | | | |