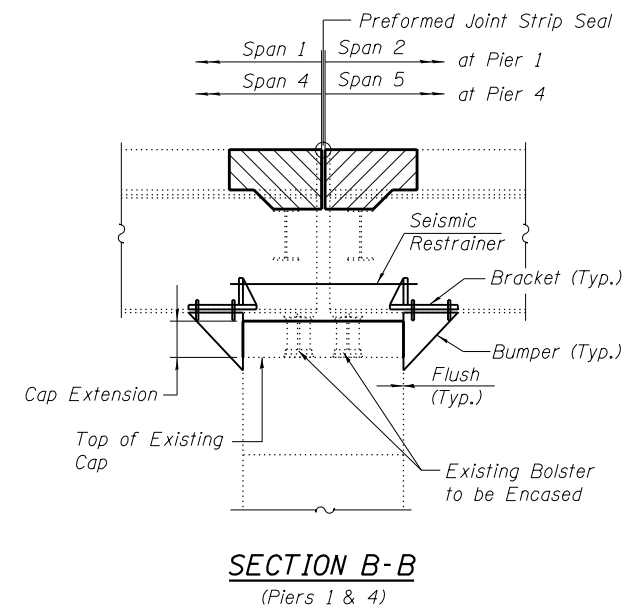
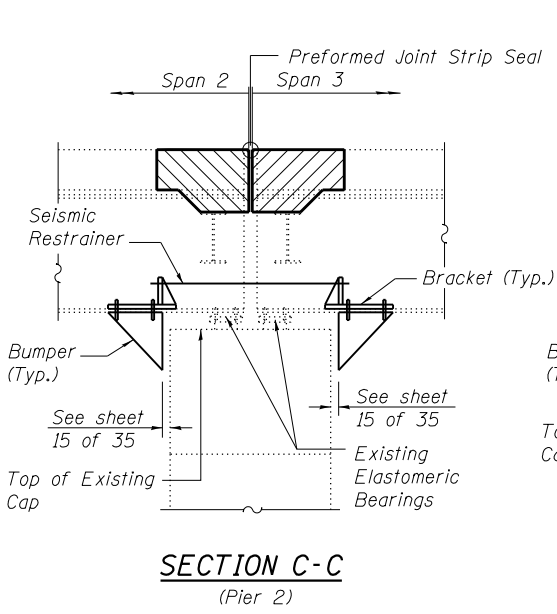


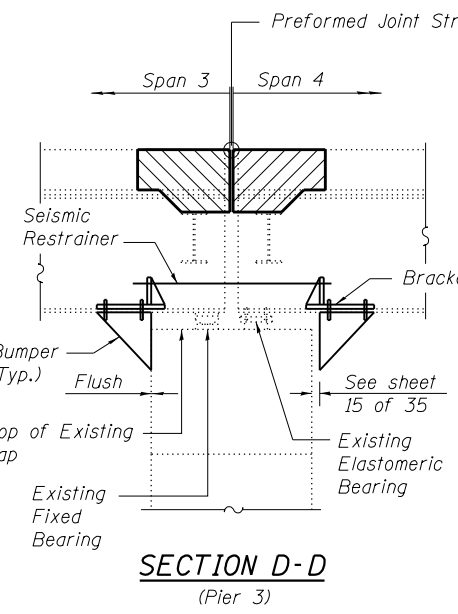
SECTION A-A
(at Rt. L's to C Abut.)



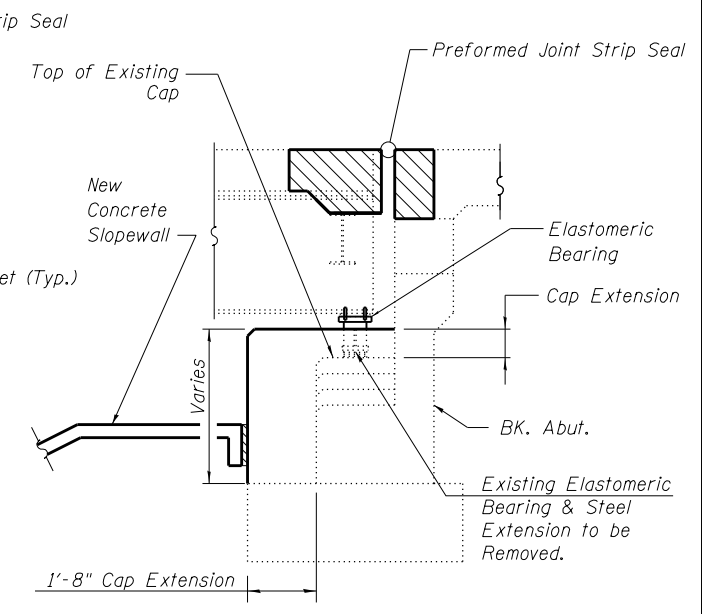
SECTION B-B
(Piers 1 & 4)



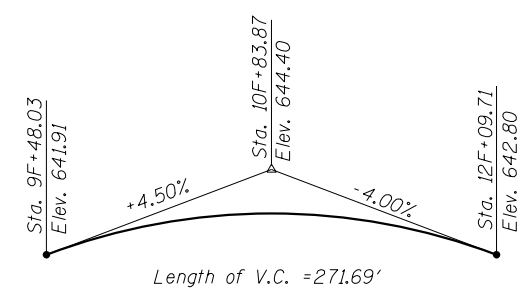
SECTION C-C
(Pier 2)



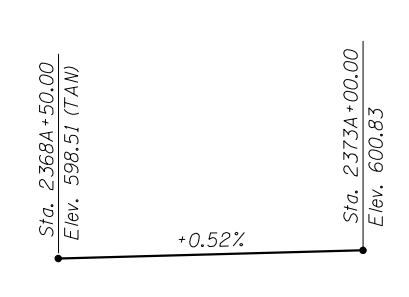
SECTION D-D
(Pier 3)



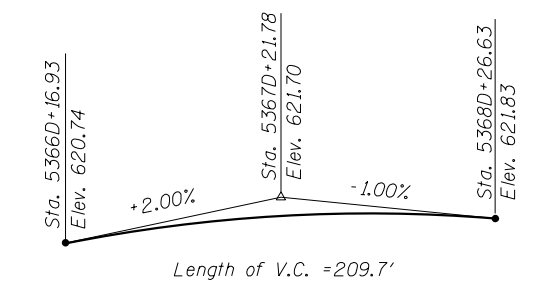
SECTION E-E
(at Rt. L's to C Abut.)



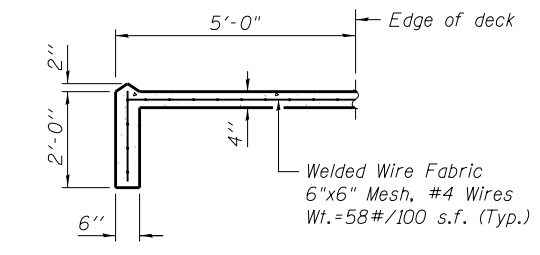
PROFILE GRADE
(F.A.I. Route 70 Line "F")



PROPOSED PROFILE GRADE
(F.A.I. Route 57 Line "A")



PROPOSED PROFILE GRADE
(F.A.I. Route 57 Line "D")



SECTION F-F

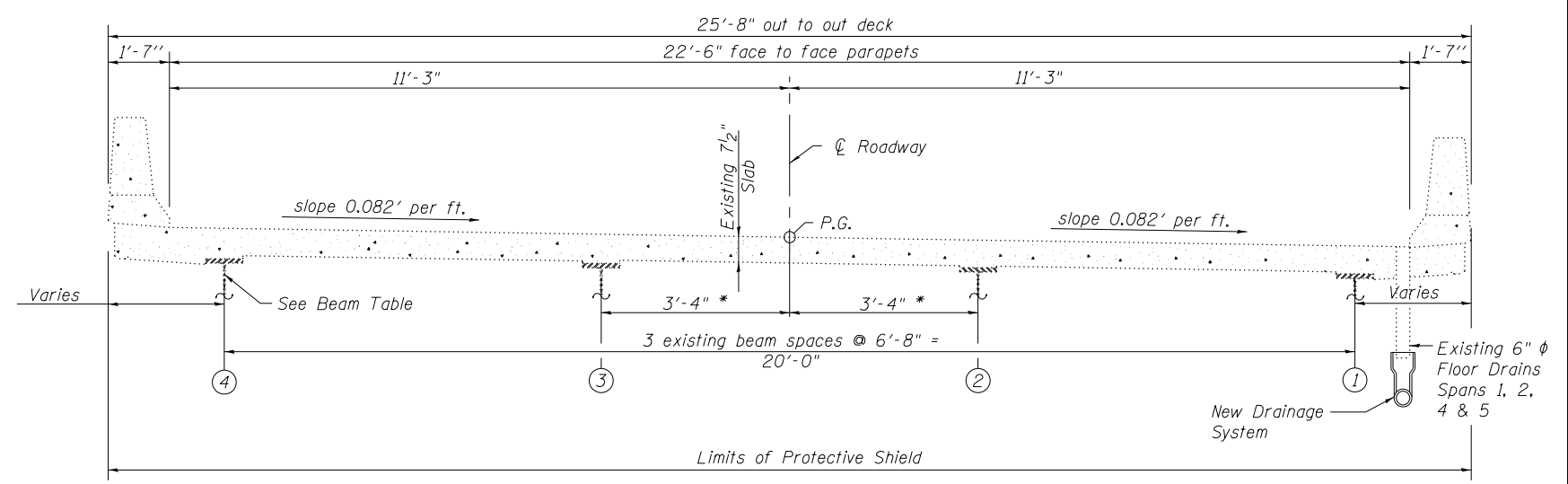
Indicates Removal and Replacement of Concrete, Existing Neoprene Expansion Joints and Preformed Joint Seals.

EXISTING BEAM TABLE					
	Span 1	Span 2	Span 3	Span 4	Span 5
Beam No. 1	36WF160	36WF160	36WF160	36WF150	36WF150
Beam No. 2	36WF160	36WF160	36WF160	33WF130	33WF130
Beam No. 3	36WF160	36WF160	36WF160	33WF130	33WF130
Beam No. 4	36WF160	36WF160	36WF160	36WF150	36WF150

HORIZONTAL CURVE DATA
(Existing F.A.I. Route 70 Line "A")
P.I. Sta. 2370A+35.89 "Line" A
D = 1°0'00"
Δ = 27°0'00"(RT)
R = 5729.59'
T = 1375.55'
L = 2700.00'
E = 162.81'

HORIZONTAL CURVE DATA
(Existing F.A.I. Route 57 Line "D")
P.I. Sta. 5369D+55.95 "Line" D
D = 2°59'01"
Δ = 76°36'19"(LT)
R = 1920.30'
T = 1516.71'
L = 2567.47'
E = 526.73'

HORIZONTAL CURVE DATA
(Existing F.A.I. Route 70 Line "F")
P.I. Sta. 15F+63.72 "Line" F
D = 8°11'35"
Δ = 85°16'42"(RT)
R = 699.33'
T = 643.95'
L = 1040.88'
E = 251.32'



CROSS SECTION
(Looking West)

(All dimensions shown are radial) * Beams in Span No. 2 and Span No. 4 are not parallel.