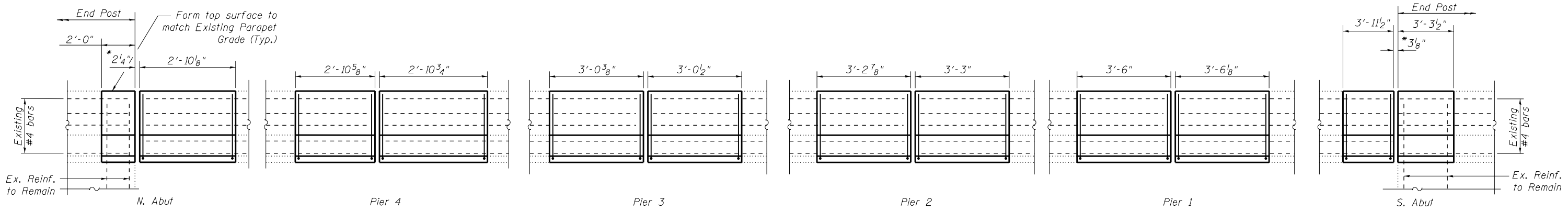


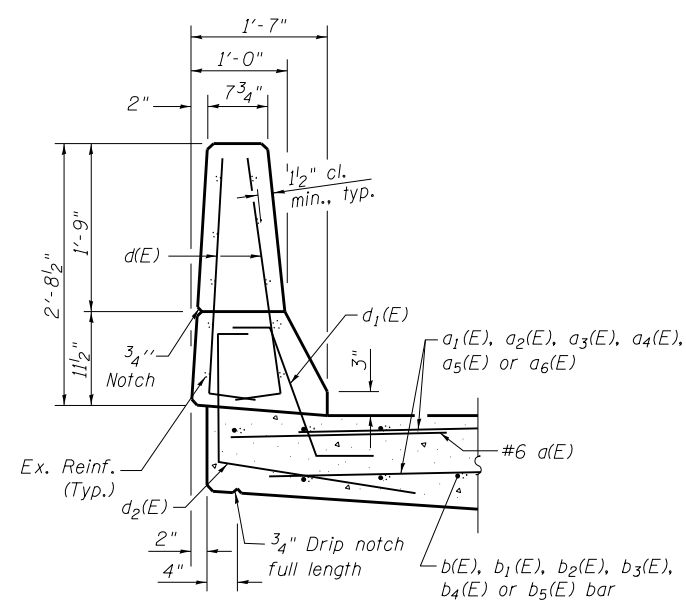
**WEST PARAPET ELEVATION**



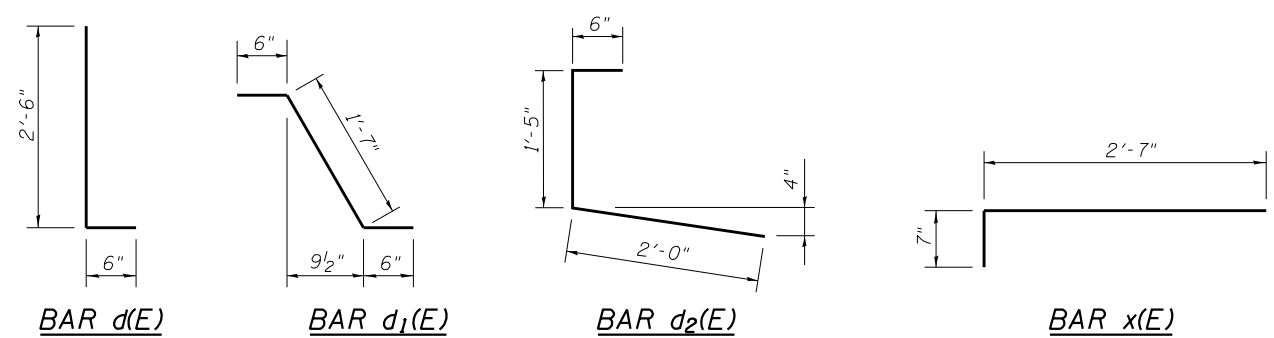
**EAST PARAPET ELEVATION**

\* Dimensions are along the length of the front face of parapet at 50° F.

Note: Quantity of End Post Concrete included with Concrete Superstructures. Parapet dimensions shown along the front face of parapet.



**SECTION A-A**



**BILL OF MATERIAL SUPERSTRUCTURE**

Bar	No.	Size	Length	Shape
d(E)	80	#6	6'-0"	—
a1(E)	9	#5	34'-6"	—
a2(E)	8	#5	31'-5"	—
a3(E)	8	#5	29'-2"	—
a4(E)	8	#5	27'-4"	—
a5(E)	8	#5	26'-1"	—
a6(E)	9	#5	25'-2"	—
d(E)	160	#5	3'-0"	—
d1(E)	80	#5	2'-7"	—
d2(E)	80	#5	3'-11"	—
x(E)	230	#5	3'-2"	—
Concrete Superstructure			Cu. Yd.	37.7
Reinforcement Bars, Epoxy Coated			Pound	4040