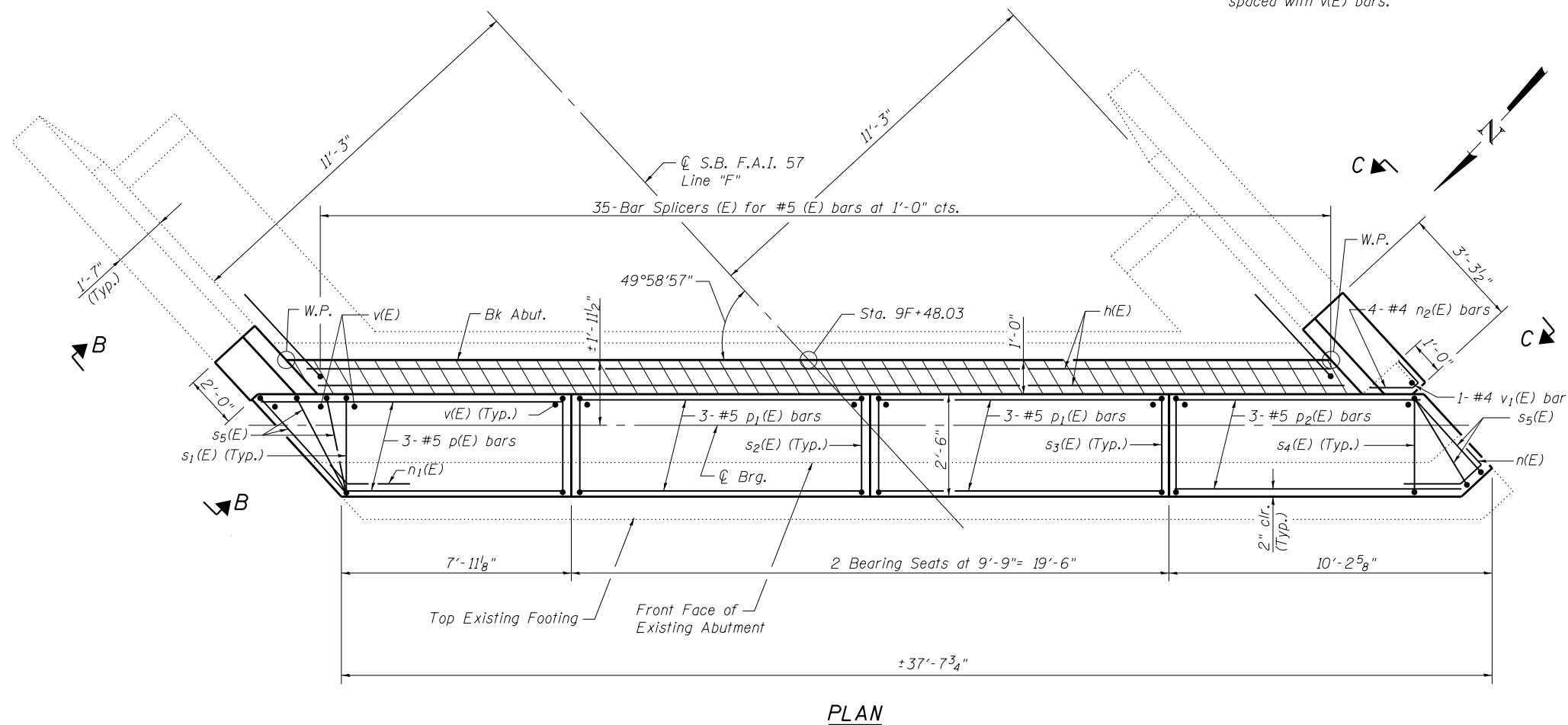


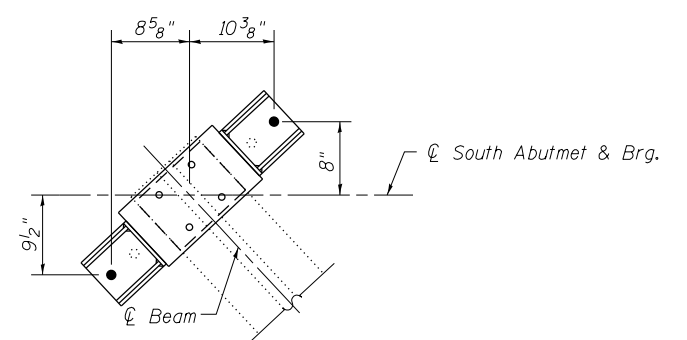
ELEVATION
Looking South

* Field Drill and Epoxy Grout min. 7" into existing cap.
see Section Thru Abutments.
** spaced with v(E) bars.

Notes:
Cut p(E), p₂(E) and s₅(E) bars to fit with 2" clear.
For Sections A-A, B-B and C-C see sheet 19 of 35.
Hatched area quantity of concrete included with Concrete Superstructure.
Space reinforcement to miss Anchor Bolts.
Bars shall be drilled and grouted according to Section 584 of the Standard Specifications.
Quantity of End Post Concrete included in Concrete Superstructure.
See sheet 19 of 35 for End Post Reinforcing.



PLAN



ANCHOR BOLT DETAIL
SOUTH ABUTMENT

FILE NAME = 0250019-74295-018.dgn	USER NAME =	DESIGNED - B.B.	REVISED -	STATE OF ILLINOIS DEPARTMENT OF TRANSPORTATION	SOUTH ABUTMENT DETAILS STRUCTURE NO. 025-0019	F.A.I. R.T.E. = 57/70	SECTION = (25-4HB)1-3	COUNTY = EFFINGHAM	TOTAL SHEETS = 1760	SHEET NO. = 1723
BERNHARDEN LOCHMULLER & ASSOCIATES, INC. 3 OAK DRIVE MARYVILLE, IL 62450 PHONE 618-281-4666 FAX 618-281-4666	Illinois Design Firm Number 184,001670	CHECKED - C.J.F.	REVISED -			CONTRACT NO. 74295				
	PLOT SCALE =	DRAWN - W.J.S.	REVISED -			ILLINOIS FED. AID PROJECT				
	PLOT DATE = 2:40:02 PM 8/15/2013	CHECKED - C.J.F. & B.B.	REVISED -			SHEET NO. 18 OF 35 SHEETS				