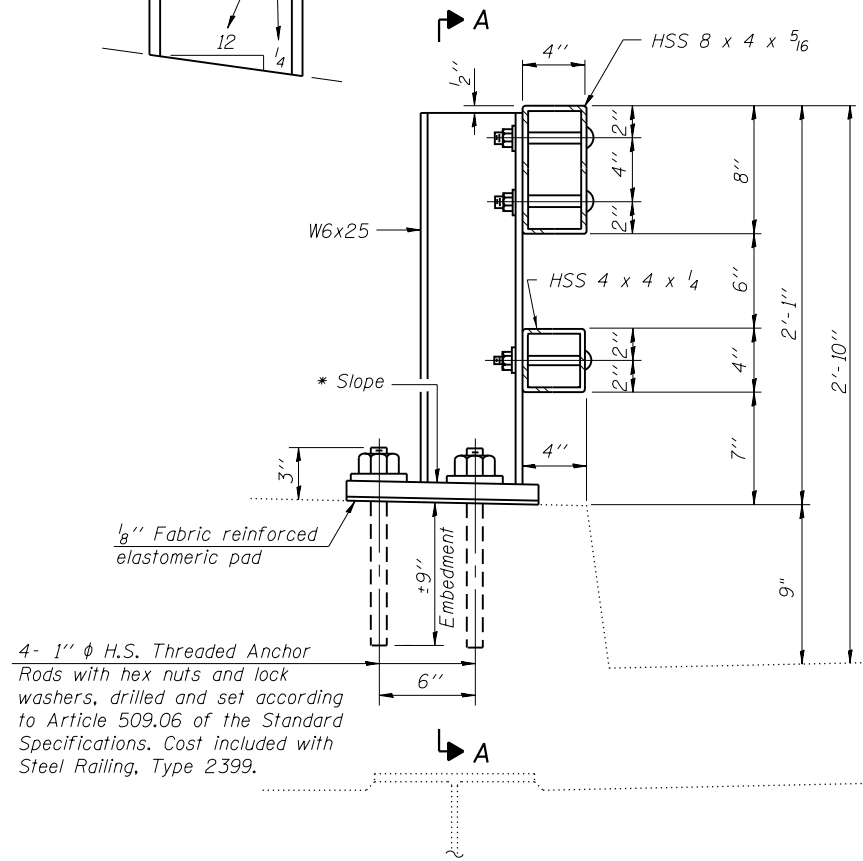
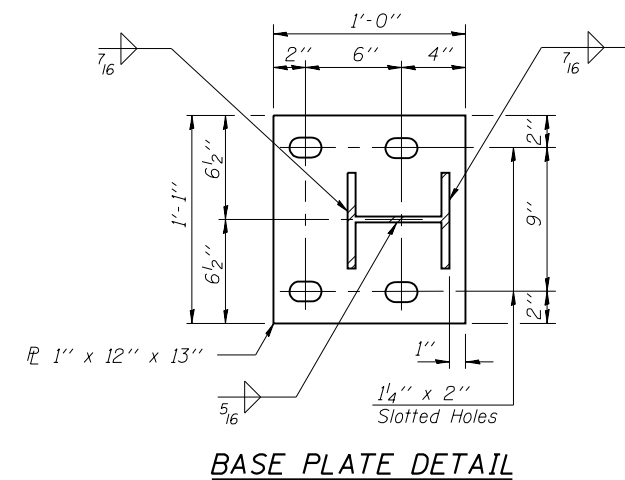


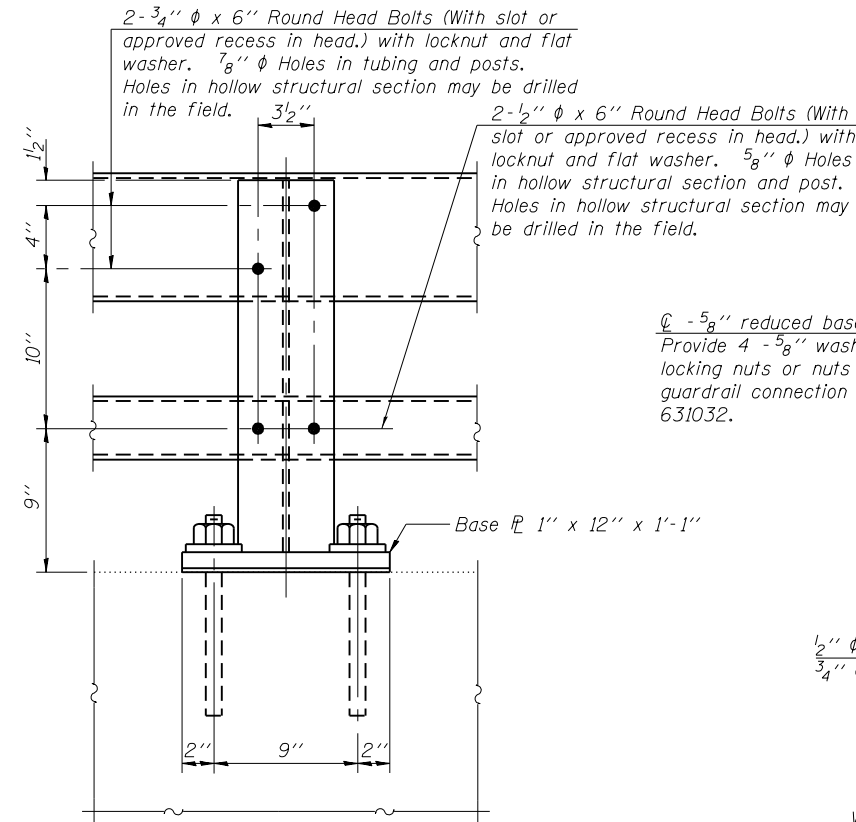
* Cut bottom end of post to curb slope.



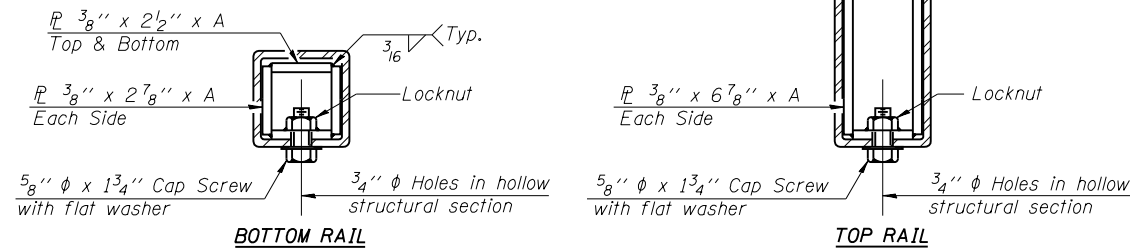
SECTION AT RAIL POST



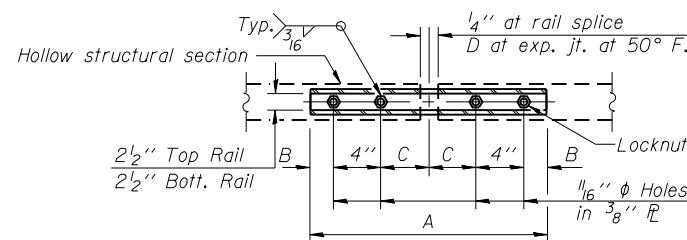
BASE PLATE DETAIL



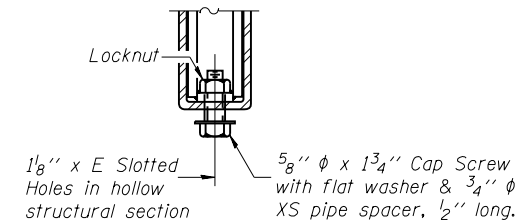
SECTION A-A



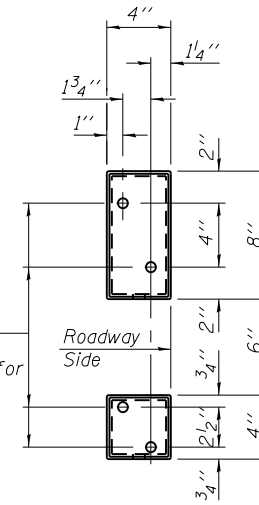
SECTIONS AT RAIL SPLICE



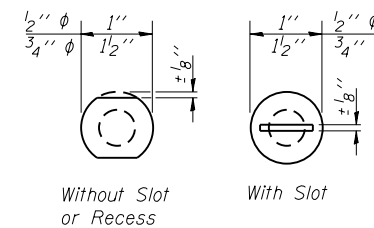
PLAN-BOTT. SPLICE P TYPICAL



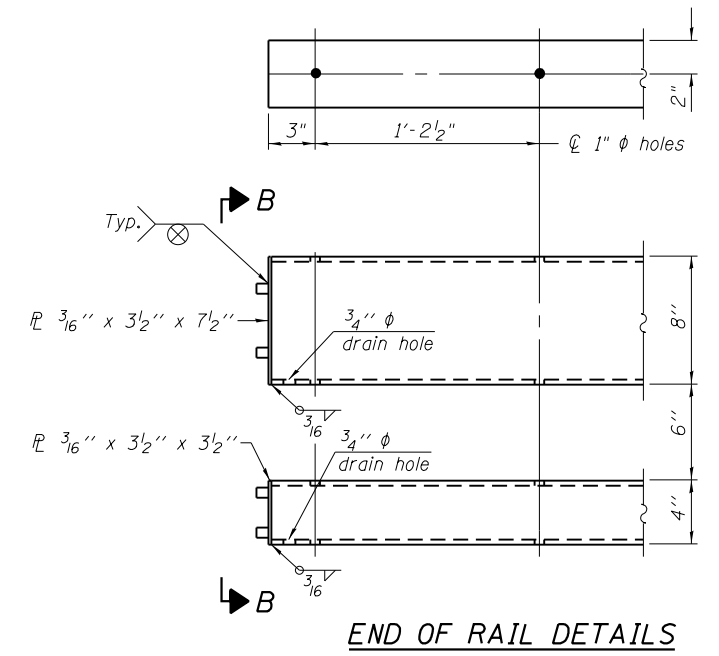
RAIL SPLICE CONNECTION AT EXPANSION JT.



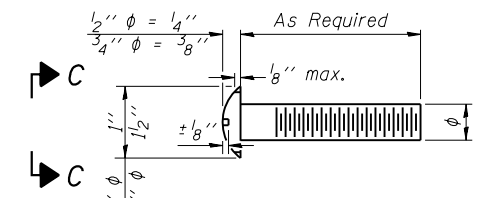
VIEW B-B



VIEW C-C



END OF RAIL DETAILS



DETAIL OF 1/2" ϕ & 3/4" ϕ ROUND HEAD BOLTS

Notes:

All field drilled holes shall be coated with an approved zinc rich paint before erection.
 Posts shall not be located closer than 1'-3" to an existing bridge expansion joint or end of bridge.
 Steel Bridge Rail expansion joint shall be provided between any two (2) posts which span a bridge expansion joint. Bolts located at expansion joint shall be provided with locknuts and shall be tightened only to a point that will allow railing movement.
 Provide one 1/8" and two 1/16" steel shims for 25% of the posts. Shims shall be similar to base plates in size and holes.
 All steel rail elements shall be galvanized according to Article 509.05 of the Standard Specifications.

SPLICE DIMENSIONS

| T | D | A | B | C | E |
|---------------|--------|--------|--------|--------|--------|
| ≤ 4" | 2 1/2" | 1'-8" | 2" | 4" | 2 1/2" |
| > 4" ≤ 6 1/2" | 3 3/4" | 2'-0" | 2 1/2" | 5 1/2" | 3 1/2" |
| > 6 1/2" ≤ 9" | 5" | 2'-4" | 3 1/2" | 6 1/2" | 9" |
| > 9" ≤ 13" | 7" | 2'-10" | 4 1/2" | 8 1/2" | 11" |
| Rail Splice | 4" | 1'-8" | 2" | 4" | — |

T = Total movement at expansion joint as shown on the design plans.

BILL OF MATERIAL

| Item | Unit | Quantity |
|--------------------------|------|----------|
| Steel Railing, Type 2399 | Foot | 450 |

S:\Proj\res\403-00072_57-70\Bridges\Bridge 025-0062_TR over 57-70\Bridges\Bridge 025-0062-74295-004.dgn