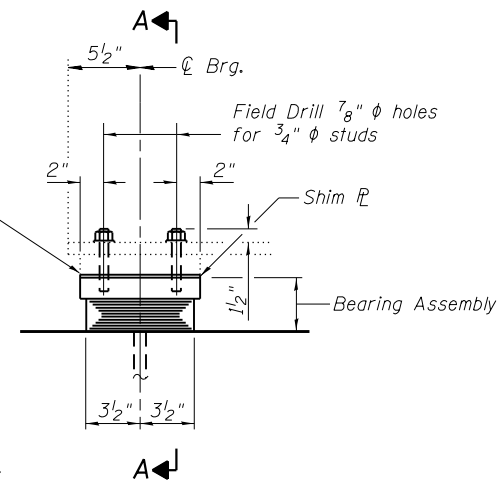
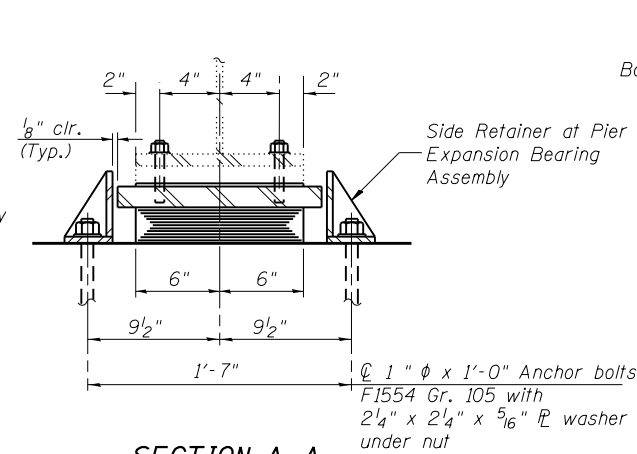


EXISTING BEARING REMOVAL DETAIL

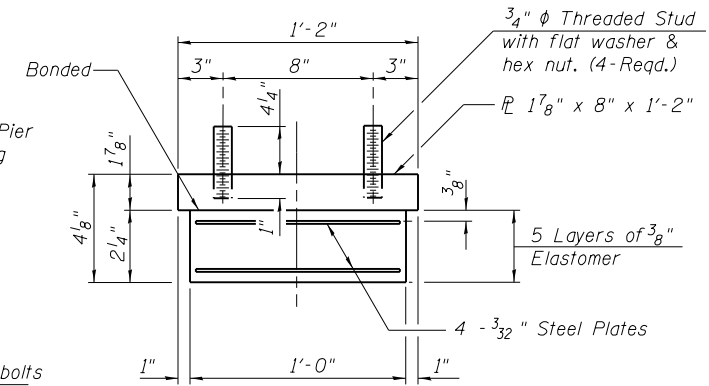
(10 Required)
5 at Piers 1 & 3



ELEVATION



SECTION A-A



BEARING ASSEMBLY

(at Piers 1 & 3)

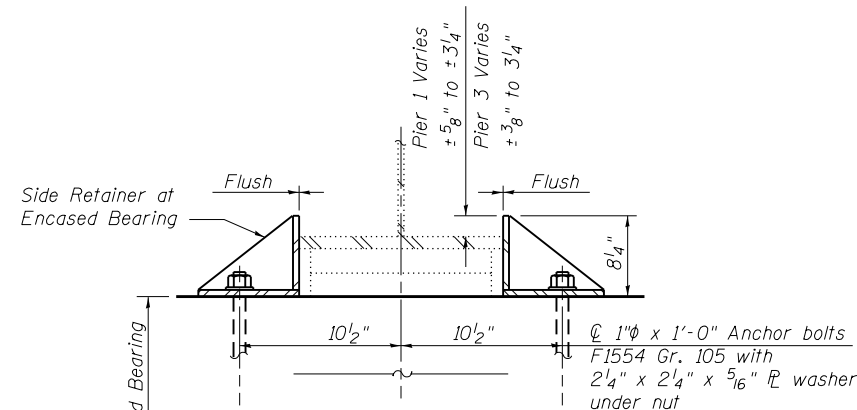
TYPE I ELASTOMERIC EXP. BRG.

(10 Required)
5 at Piers 1 & 3

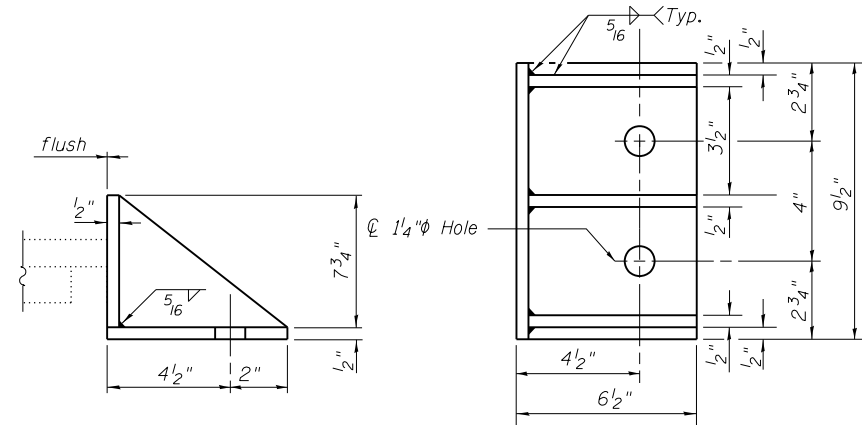
PROCEDURE TO JACK AND REMOVE EXISTING BEARINGS

(Pier 1 & Pier 3)
(Minimum Jack Capacity Required 51 tons)

1. Jack and Remove Existing Bearings shall be conducted according to the General Bridge Special Provision "Jack and Remove Existing Bearings". See Interior Beam Reaction Table for loads.
2. Three beams may be lifted simultaneously, as outlined in the stage construction layout.
3. The existing anchor bolts shall be cut off flush with the existing bridge seat, the rockers, top and bottom plates shall be removed.
4. Formwork and bearing seat construction shall occur.
5. The new elastomeric bearings shall be placed and the jacks shall be lowered.
6. The new holes for the side retainers shall be drilled at the locations specified.
7. No Bearing Replacement is required at Pier 2.

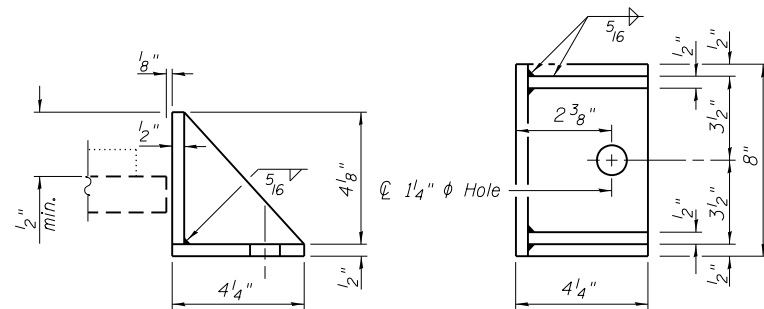


**ENCASED FIXED BEARINGS
PIERS 1 & 3**



**SIDE RETAINER
AT ENCASED BEARINGS**

Equivalent rolled angle with stiffeners
will be allowed in lieu of welded plates.
(20 Required)
10 at Pier 1 and 10 at Pier 3



**SIDE RETAINER AT PIER
EXPANSION BEARING ASSEMBLY**

Equivalent rolled angle with stiffeners
will be allowed in lieu of welded plates.
(20 Required)
10 at Pier 1 and 10 at Pier 3

- Notes:
- See Sheet 16 of 20 for Anchor Bolt location Details at Pier 1.
 - See Sheet 19 of 20 for Anchor Bolt location Details at Pier 3.
 - See Sheet 9 of 20 for additional notes.
 - Side Retainers at Encased Bearings shall be paid for as Furnishing & Erecting Structural Steel.

INTERIOR BEAM REACTION TABLE								
	N. Abut.	Pier 1			Pier 3		S. Abut.	
		Span 1	Span 2	Pier 2	Span 3	Span 4		
R _ℓ	(k)	22.4	22.4	28.1	93.6	28.1	22.4	22.4
R _r	(k)	25.5	27.8	30.8	50.9	30.8	25.5	25.5
Imp.	(k)	7.6	7.6	8.0	13.2	8.0	7.6	7.6
R _{Total}	(k)	55.5	55.5	66.9	157.7	66.9	55.5	55.8

BILL OF MATERIAL

Item	Unit	Total
Elastomeric Bearing Assembly Type I	Each	10
Anchor Bolts, 1"	Each	60
Jack & Remove Existing Bearings	Each	10
Furnishing & Erecting Structural Steel	Pound	600

S:\Proj\025-0062-74295-010\025-0062-74295-010.dgn