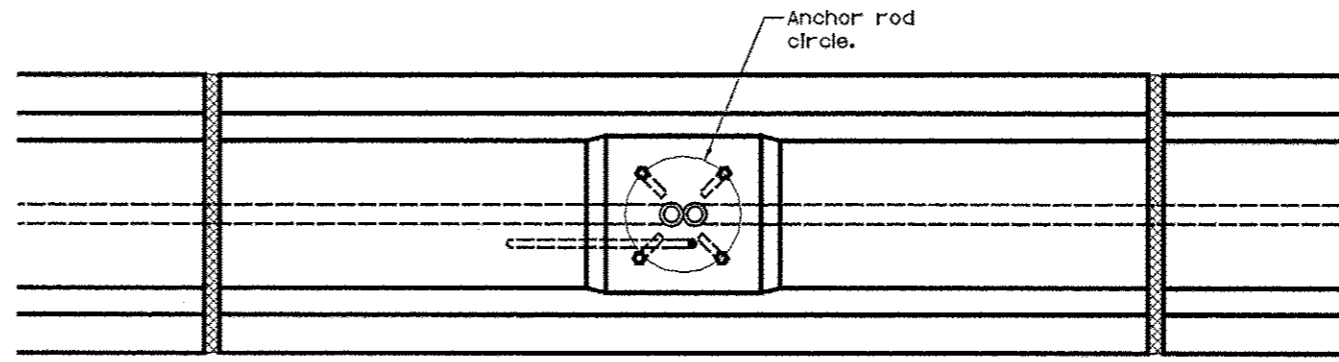
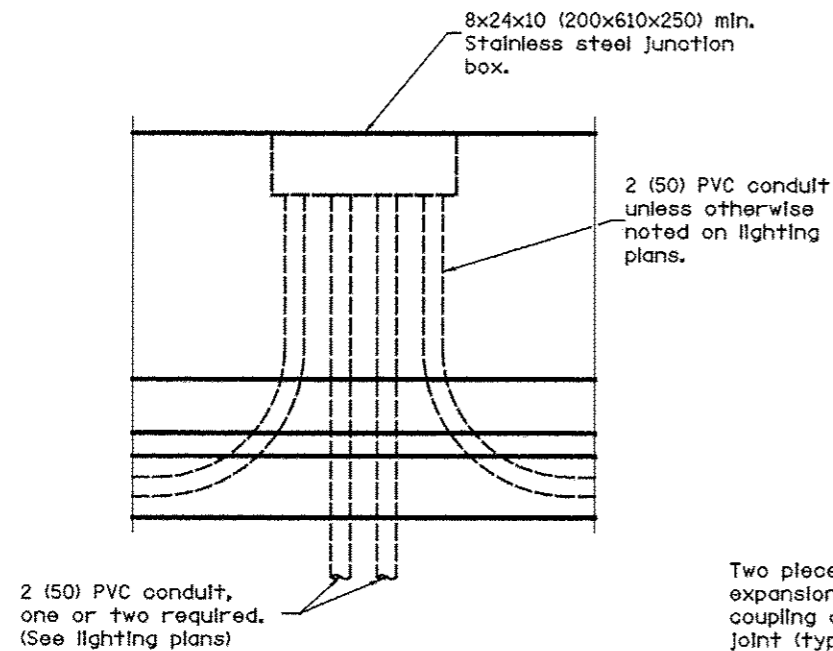


FOUNDATION TABLE				
LIGHT POLE MOUNTING HEIGHT	SHAFT DIAMETER	SHAFT DEPTH	ANCHOR ROD LENGTH (1)	ANCHOR ROD CIRCLE DIA.
30'	24	36	6'-0"	11 1/2
(9.1 m)	(610)	(914)	(1.83 m)	(292)
31'-35'	24	3'-6"	6'-6"	11 1/2
(9.4 m - 10.7 m)	(610)	(1.06 m)	(1.98 m)	(292)
36'-40'	30	4'-0"	7'-0"	15
(10.9 m - 12.2 m)	(762)	(1.22 m)	(2.13 m)	(381)
41'-45'	30	4'-6"	7'-6"	15
(12.5 m - 13.7 m)	(762)	(1.37 m)	(2.29 m)	(381)
46'-50'	30	5'-0"	8'-0"	15
(14.0 m - 15.2 m)	(762)	(1.52 m)	(2.44 m)	(381)

(1) Length does not include 4 (100) hook.

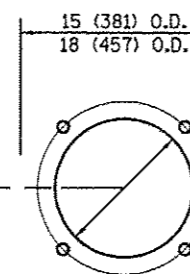


**PLAN**

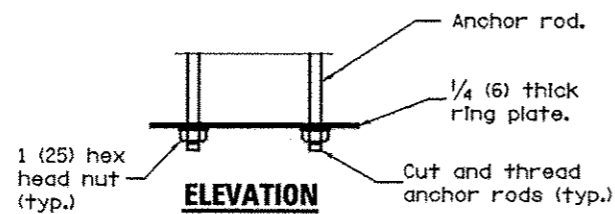


**JUNCTION BOX ELEVATION**

9 (229) with 11 1/2 (292) bolt circle  
12 (305) with 15 (381) bolt circle

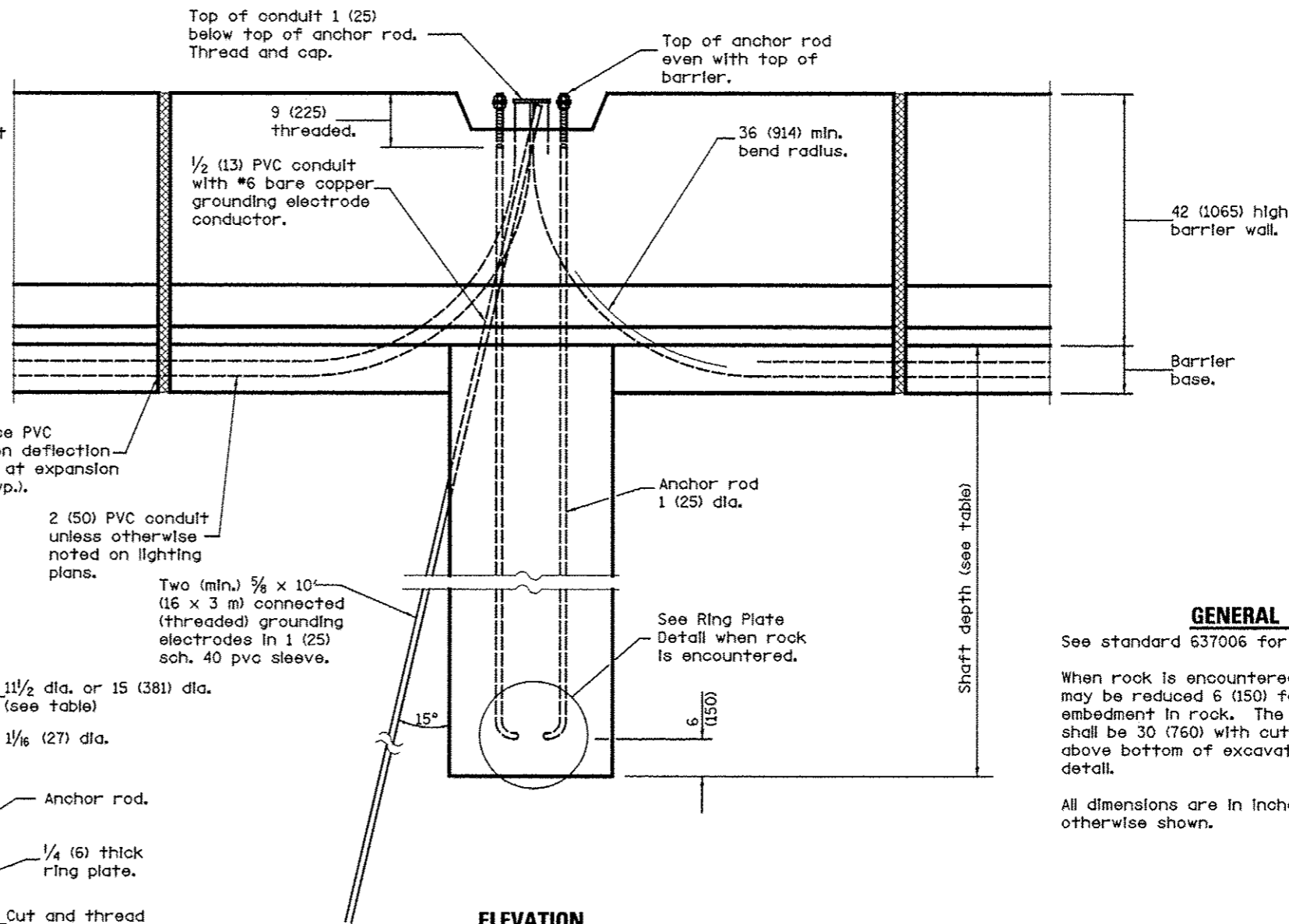


**PLAN**



**ELEVATION**

**RING PLATE DETAIL**



**ELEVATION LIGHT POLE FOUNDATION**

**GENERAL NOTES**

See standard 637006 for barrier wall details

When rock is encountered the foundation depth may be reduced 6 (150) for every 12 (300) of embedment in rock. The minimum foundation depth shall be 30 (760) with cut anchor rods 6 (150) above bottom of excavated hole. See ring plate detail.

All dimensions are in inches (millimeters) unless otherwise shown.

FILE NAME *	USER NAME = john	DESIGNED -	REVISED -
Substructure-03-0002-07-10-dupl for lighting detail		DRAWN -	REVISED -
	PLOT SCALE = 48,0000 "/ IN.	CHECKED -	REVISED -
	PLOT DATE = 8/8/2013	DATE -	REVISED -

STATE OF ILLINOIS  
DEPARTMENT OF TRANSPORTATION

LIGHT POLE FOUNDATION DETAIL

SCALE: SHEET NO. 34A OF 35 SHEETS STA. TO STA.

F.A.I. RTE.	SECTION	COUNTY	TOTAL SHEETS	SHEET NO.
57/70	(25-4)R	EFFINGHAM	1760	481A
CONTRACT NO. 74295				
FED. ROAD DIST. NO. (ILLINOIS) FED. AID PROJECT				