

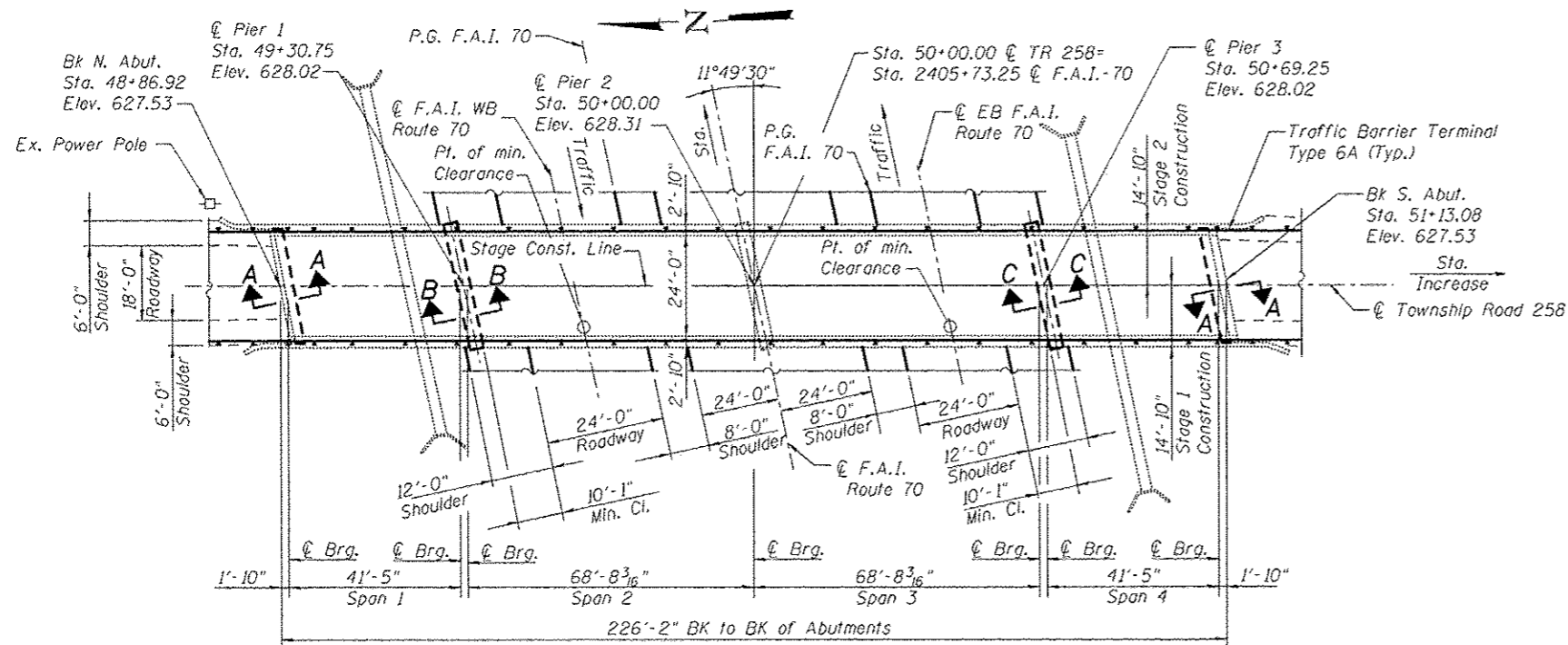
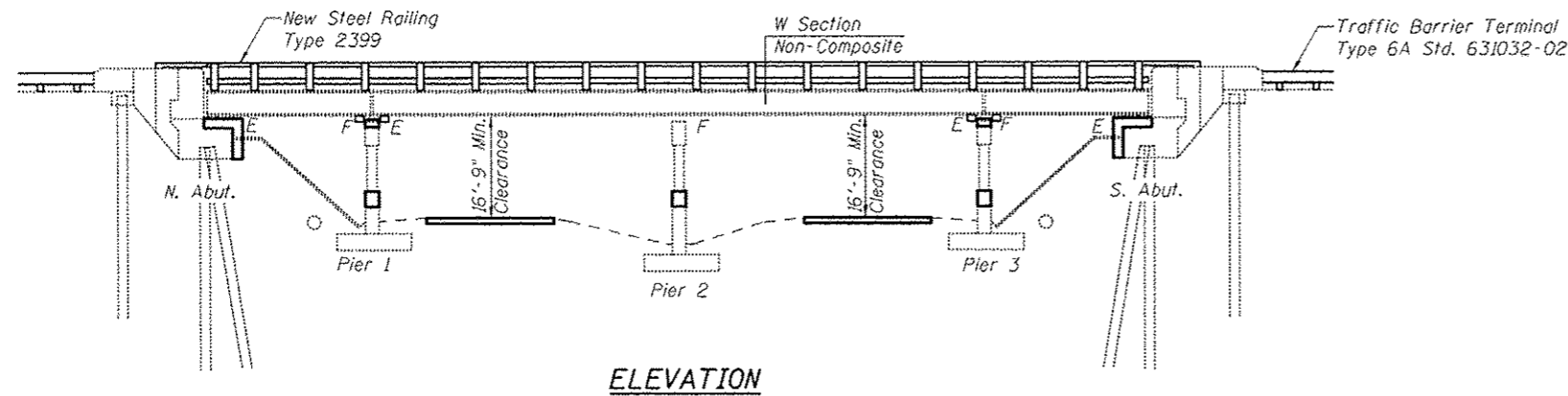
Branch Mark: Chiseled square on S. E. concrete corner of bridge on road 1600th AVE. Station 2340+63.17.
Elevation 582.40, 244.07 ft. LT.

Existing Structure: #025-0062 Built in 1960 226'-2" Bk. to Bk. of abutments and 29'-8" Out to Out Width.
The structure consists of an R.C. deck on WF beams with 2 spans continuous and 2 simple spans. Traffic to be maintained at all times utilizing stage construction with the use of signalized traffic lights.

No salvage.

INDEX OF SHEETS

1. General Plan
2. General Data
3. General Information
4. Steel Railing, Type 2399
5. Bar Splicer Assembly & Mechanical Splicer Details
6. Seismic Restrainer & Bracket Details
- 7-8. Bumper Details
9. Abutment Bearing Details
10. Pier Bearing Details
11. North Abutment Details
12. North Abutment Sections
13. South Abutment Details
14. South Abutment Sections
15. Pier 1 General Plan
16. Pier 1 Details
17. Pier 2 General Plan
18. Pier 3 General Plan
19. Pier 3 Details
20. Paint Details



PLAN
(Stationing & Elevations for Township Road 258 from original constructions plans)

See Sheet 3 of 20 for Sections A-A, B-B, C-C.

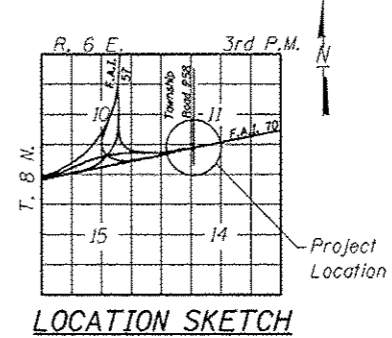
LOADING HS15
Allow 18 psf future wearing surface

DESIGN SPECIFICATIONS
2002 AASHTO Standard Specifications for Highway Bridges
1995 F.H.W.A. Seismic Retrofitting Manual for Highway Bridges
2006 F.H.W.A. Seismic Retrofitting Manual for Highway Structures Part I-Bridges (Reference Only)

DESIGN STRESSES

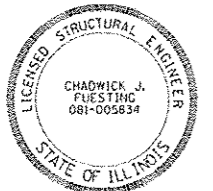
New Construction
f'c = 3,500 psi
fy = 60,000 psi (Reinforcement)
fy = 50,000 psi (Structural Steel) (AASHTO M270 Grade 50)

Existing Structure
f'c = 3500 psi
fy = 40,000 psi (Reinforcement)
fy = 33,000 psi
fy = 36,000 psi (Pier 2, Beams 2-5)



SEISMIC DATA
Seismic Performance Category (SPC) = B
Bedrock Acceleration Coefficient (A) = 0.075g
Site Coefficient (S) = 1.0

GENERAL PLAN
TOWNSHIP ROAD 258 OVER FAI 70
STATION 50+00.00
STRUCTURE NO. 025-0062



Chadwick J. Fuesting 6/10/13

FILE NAME = 0250062-74294-001.dgn	USER NAME =	DESIGNED - B.B.	REVISED -	STATE OF ILLINOIS DEPARTMENT OF TRANSPORTATION	F.A.I. RTE.	SECTION	COUNTY	TOTAL SHEETS	SHEET NO.
DESIGNER: CHADWICK J. FUESTING & ASSOCIATES, INC. 3 CAROL DRIVE MURFEEVILLE, ILLINOIS 62450 PHONE (618) 384-4444 FAX (618) 384-4444	ILLINOIS Design Firm Number 184.001670	CHECKED - A.C.S.	REVISED -		70	(25-4HB-211)	EFFINGHAM	1760	1741
PLOT SCALE =	DRAWN - B.B.	REVISED -	REVISED -		CONTRACT NO. 74295				
PLOT DATE = 11:44 AM 6/10/2013	CHECKED - C.J.F.	REVISED -	REVISED -		SHEET NO. 1 OF 20 SHEETS				

ILLINOIS FED. AID PROJECT