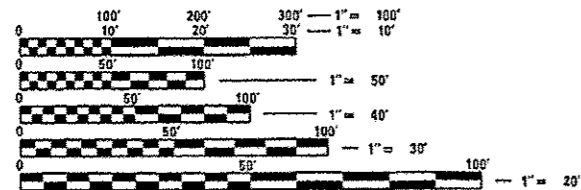


TITLE	PAGE NO.
COVER SHEET	1
SUMMARY OF QUANTITIES	2
BARGE PLANS	3-16
PUSHBOAT PLANS	△ 17-64C

KAMPSVILLE_FERRY_A01
 2011 ADT = 600 (ACTUAL)
 2013 ADT = 625 (ESTIMATED)
 2033 ADT = 150 (ESTIMATED)
 SU = 2.2%
 MU = 3.0%



FULL SIZE PLANS HAVE BEEN PREPARED USING STANDARD ENGINEERING SCALES. REDUCED SIZED PLANS WILL NOT CONFORM TO STANDARD SCALES. IN MAKING MEASUREMENTS ON REDUCED PLANS, THE ABOVE SCALES MAY BE USED.

J.U.L.I.E.
 JOINT UTILITY LOCATION INFORMATION FOR EXCAVATION
 1-800-892-0123
 OR 811

PROJECT ENGINEER: TIM PADGETT (618)346-3325
 PROJECT MANAGER: DON HAYDEN (618)346-3194

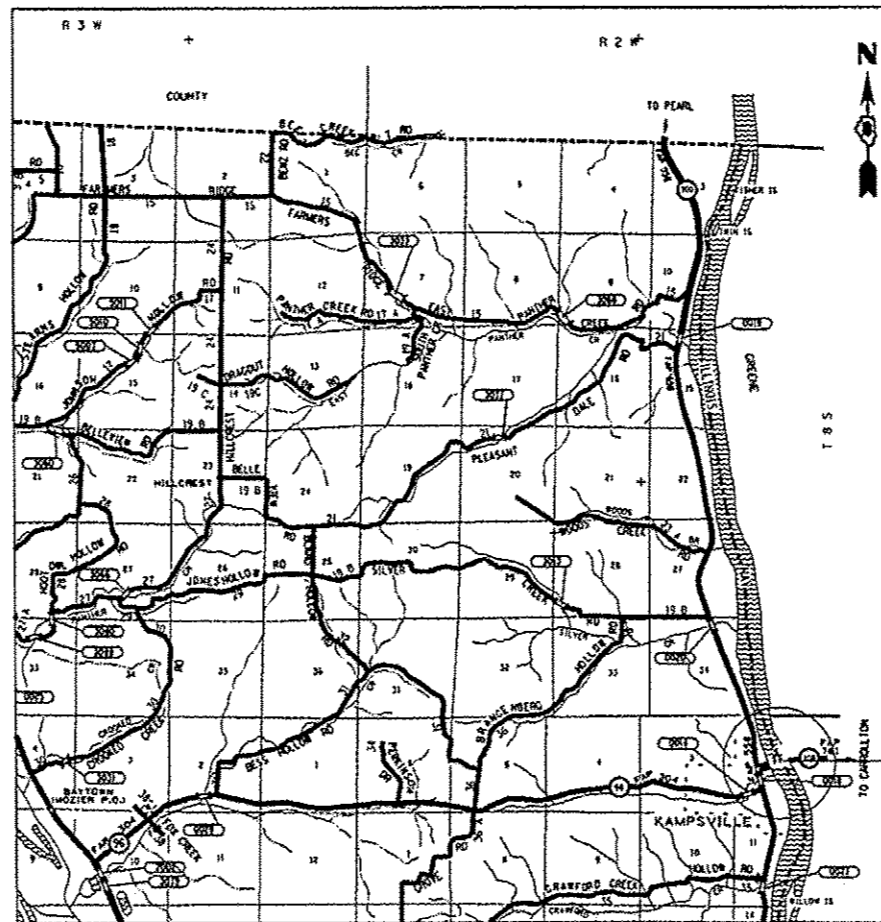
CONTRACT NO. 76G16

STATE OF ILLINOIS
 DEPARTMENT OF TRANSPORTATION
 DIVISION OF HIGHWAYS

PROPOSED HIGHWAY PLANS

FAP ROUTE 761 (IL 108)
 SECTION 101-I-2
 PROJECT FBD-0761(013)
 PUSH BOAT AND BARGE
 CALHOUN & GREENE COUNTIES

C-98-017-13



NOT TO SCALE

LAT. = 39.299626
 LONG. = -90.608774

△ REVISED 9-6-2013

F.A.P. RTE.	SECTION	COUNTY	TOTAL SHEETS	SHEET NO.
761	101-I-2	ILLINOIS	64	1

CONTRACT NO. 76G16
 CALHOUN & GREENE
 64+3=67 TOTAL SHEETS

D-98-006-13



LOCATION OF SECTION INDICATED THIS: - [black rectangle]

STATE OF ILLINOIS
 DEPARTMENT OF TRANSPORTATION
 DIVISION OF HIGHWAYS

SUBMITTED July 19 20 13
Jeffrey J. Kern
 DEPUTY DIRECTOR OF HIGHWAYS, REGION 5 ENGINEER

Aug 16 20 13
John D. Baranzelli P.E. Jr.
 ENGINEER OF DESIGN AND ENVIRONMENT

Aug 16 20 13
Omer Osman P.E. Jr.
 DIRECTOR OF HIGHWAYS, CHIEF ENGINEER

PRINTED BY THE AUTHORITY
 OF THE STATE OF ILLINOIS

SUMMARY OF QUANTITIES

SUMMARY OF QUANTITIES			TOTAL QUANTITIES	CONSTRUCTION TYPE CODE		SUMMARY OF QUANTITIES			TOTAL QUANTITIES	CONSTRUCTION TYPE CODE	
CODE NO	ITEM	UNIT		CALHOUN 0026 80% FED 20% STATE	GREENE 0026 80% FED 20% STATE	CODE NO	ITEM	UNIT		CONSTRUCTION TYPE CODE	CONSTRUCTION TYPE CODE
67100100	MOBILIZATION	L SUM	1	0.5	0.5						
X0327359	BARGE FERRY	EACH	1	0.5	0.5						
X0327360	PUSHBOAT	EACH	1	0.5	0.5						
X0327361	PUSHBOAT DELIVERY	EACH	1	0.5	0.5						
X0327362	BARGE FERRY DELIVERY	EACH	1	0.5	0.5						
X0327363	SURPLUS BARGE	EACH	1	0.5	0.5						
X0327364	SURPLUS PUSHBOAT	EACH	2	1	1						
X0327603	GROSS TONNAGE CALCULATIONS	L SUM	1	0.5	0.5						
Z0076600	TRAINEES	HOURL	1,000	500	500						
Z0076604	TRAINEES, TRAINING PROGRAM GRADUATE	HOURL	1,000	500	500						

REVISSED 9-6-2013

FILE NAME	USER NAME = LaurenCY	DESIGNED -	REVISED -
e:\pwork\pwork\laurenc\10324776\d8	6916-shr-plan.dgn	DRAWN -	REVISED -
	PLOT SCALE = 1/8" = 1'-0"	CHECKED -	REVISED -
	PLOT DATE = 7/18/2013	DATE -	REVISED -

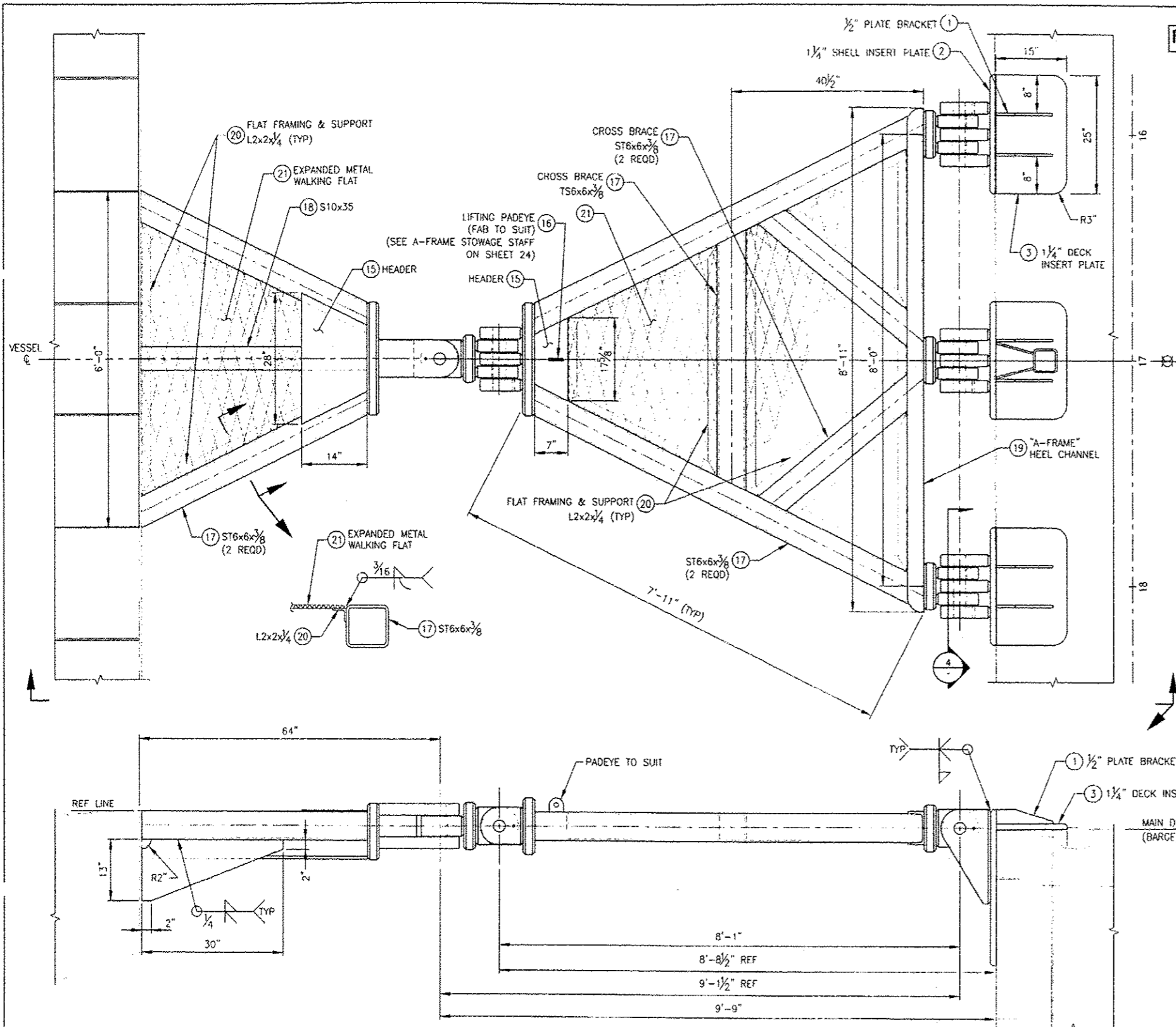
STATE OF ILLINOIS
DEPARTMENT OF TRANSPORTATION

SUMMARY OF QUANTITIES

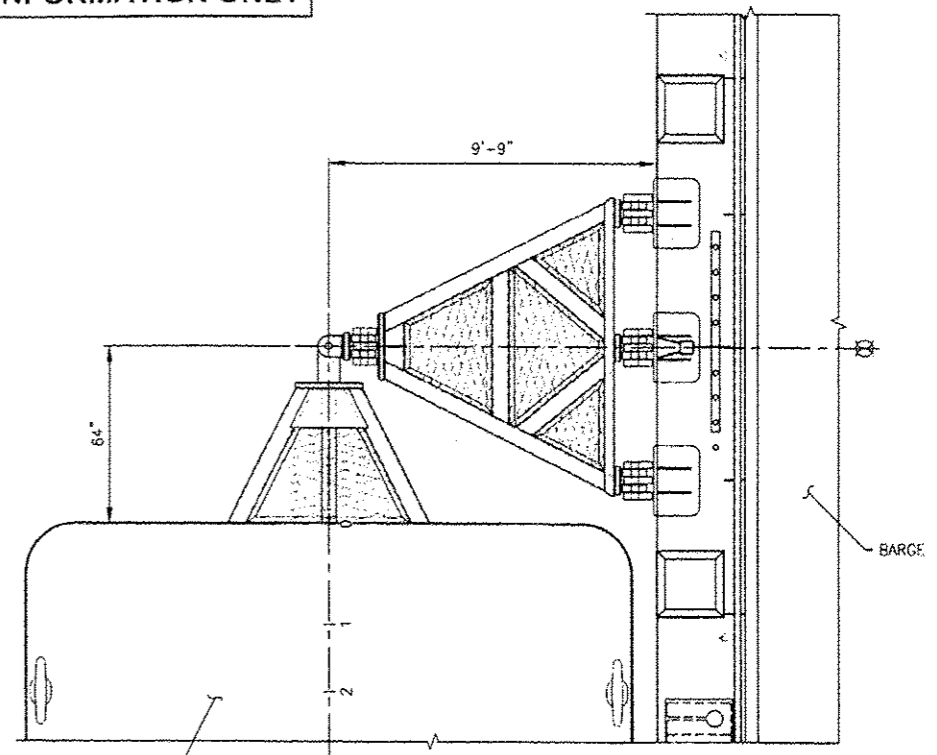
SCALE: SHEET 2 OF 64 SHEETS STA. TO STA.

F.A.P. RTE. 761	SECTION	COUNTY	TOTAL SHEETS	SHEET NO.
	101-1-2		64	2
CONTRACT NO. 76016			ILLINOIS FED. AID PROJECT	

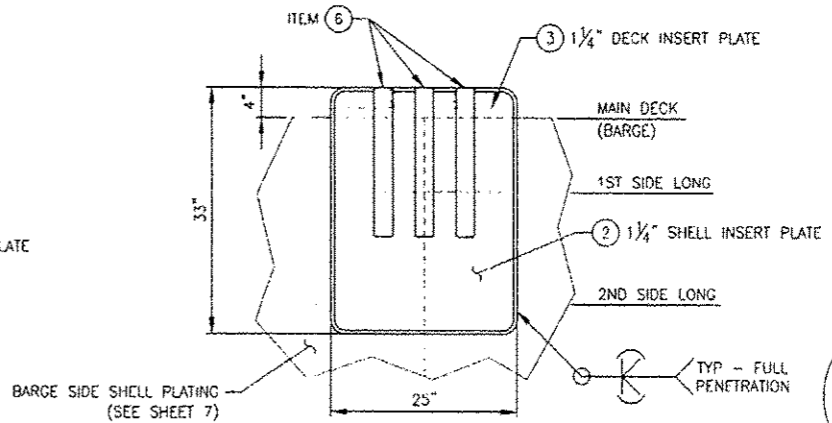
*CALHOUN & GREENE



FOR INFORMATION ONLY



1 KEY PLAN
TOW-LINKAGE YOKE/A-FRAME ARRANGEMENT
SCALE: 3/8" = 1'-0"

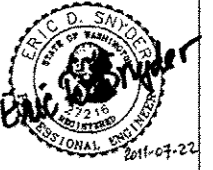
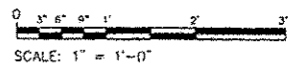
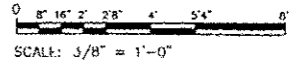


4 DETAIL
TYPICAL 3 PLACES
SCALE: 1" = 1'-0"

2 PUSHBOAT YOKE DETAIL
1 ASSEMBLY REQUIRED
SCALE: 1" = 1'-0"

3 BARGE "A-FRAME" DETAIL
1 ASSEMBLY REQUIRED
SCALE: 1" = 1'-0"

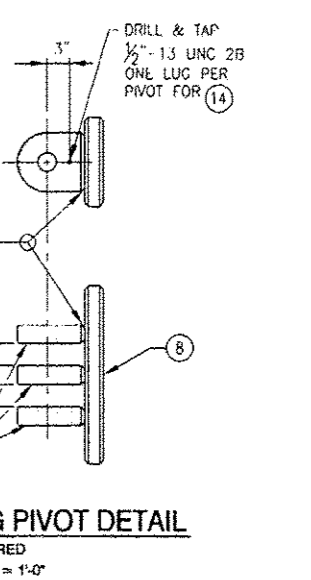
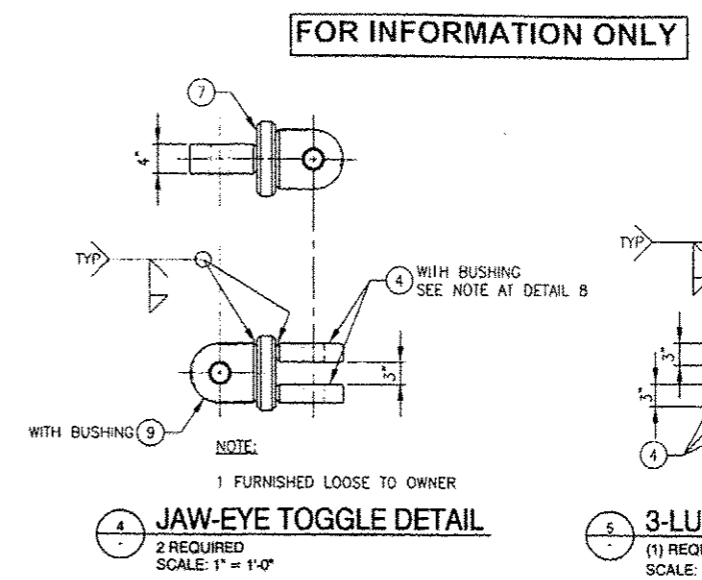
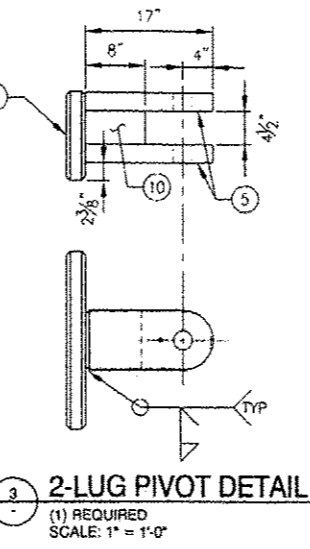
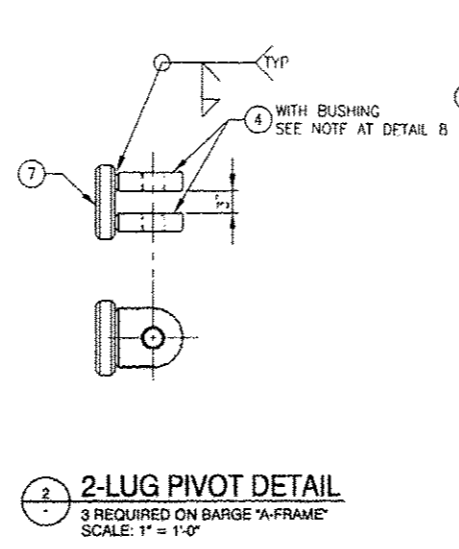
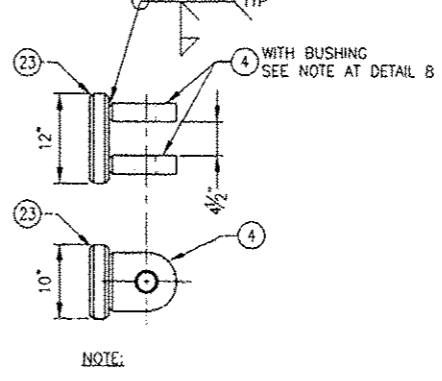
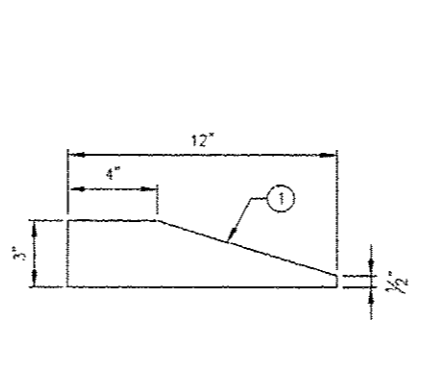
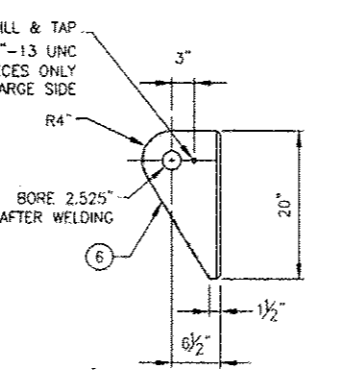
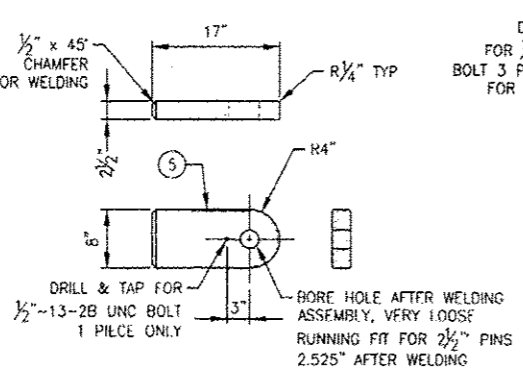
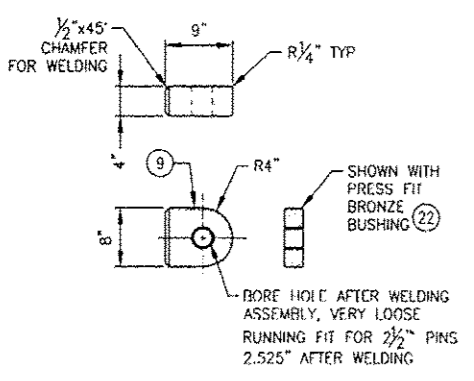
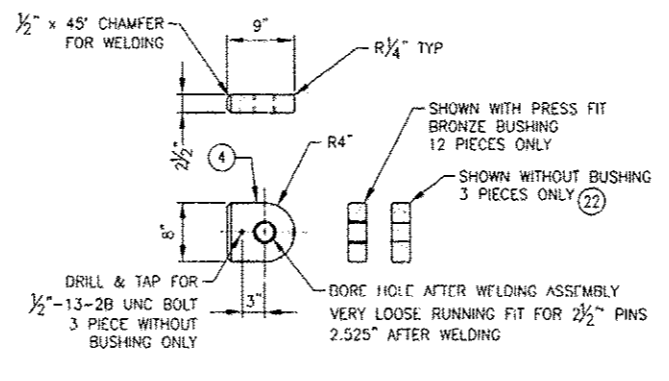
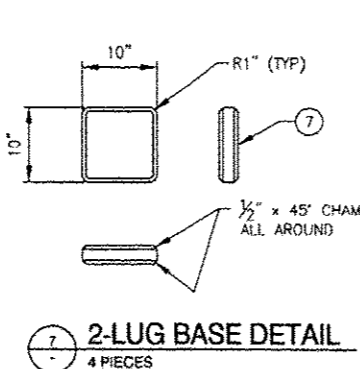
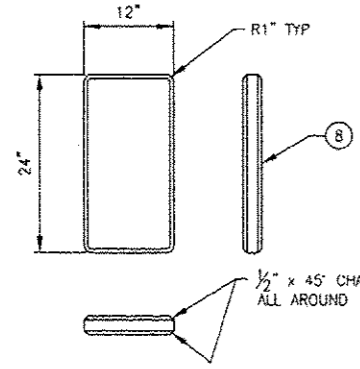
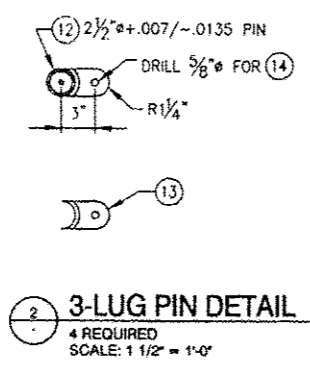
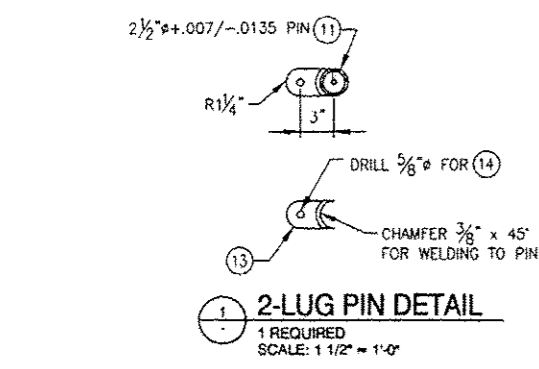
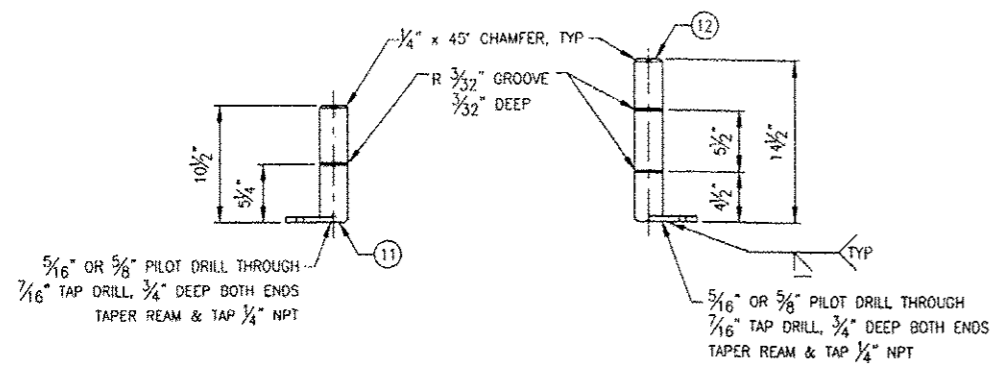
NOTE:
SEE SHEET 22 FOR BILL OF MATERIALS



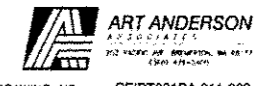
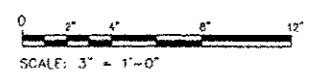
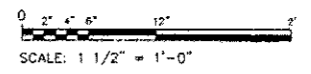
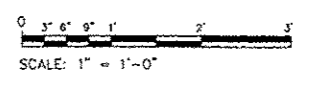
ART ANDERSON
2501 S. WASHINGTON ST.
MILWAUKEE, WI 53227
(414) 451-4100

▲ SHEET ADDED 9-6-2013

FILE NAME	USER NAME	DESIGNED - E. SNYDER	REVISED - REV A 07/21/2011	STATE OF ILLINOIS DEPARTMENT OF TRANSPORTATION	IDOT BRUSSELS FERRY TOW LINKAGE - STRUCTURE	F.A.P. RITE	SECTION	COUNTY	TOTAL SHEETS	SHEET NO.	
		DRAWN - J. WALKER	REVISED			761	101-1-2		64	64A	
		CHECKED - P. MARTIN	REVISED			CONTRACT NO. 76C16					
		DATE - 10/04/2010	REVISED			[ILLINOIS] FED. AID PROJECT					
			REVISED								



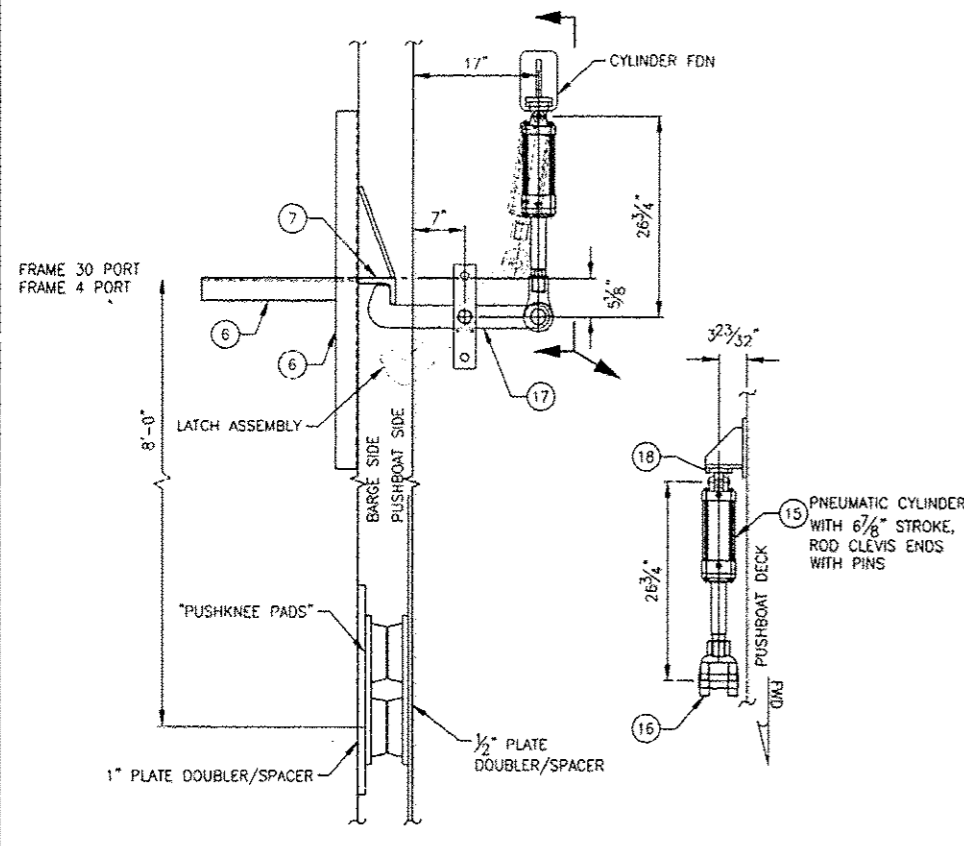
BILL OF MATERIAL				
PC NO.	QTY	DESCRIPTION	MATERIAL/SPECIFICATION	REMARKS
1	6 EA	PLATE 1/2" BRACKET	ASTM A-36	SEE DETAIL 12
2	3 FA	PLATE 1/4" SHELL INSERT	ASTM A-36	SEE SHEET 21, DETAIL 4
3	3 EA	PLATE 1/4" DECK INSERT	ASTM A-36	SEE SHEET 21, DETAIL 3
4	15 EA	PLATE 2 1/2" LUG, 9" LONG	ASTM A-36	SEE DETAIL 8
5	2 EA	PLATE 2 1/2" LUG, 17" LONG	ASTM A-36	SEE DETAIL 10
6	9 EA	PLATE 2 1/2" LUG, 20" LONG	ASTM A-36	SEE DETAIL 11
7	4 EA	PLATE 2 1/2" LUG BASE PLATE, 10"x10"	ASTM A-36	SEE DETAIL 7
8	2 EA	PLATE 2 1/2" LUG BASE PLATE, 24"x12"	ASTM A-36	SEE DETAIL 6
9	2 EA	PLATE 4" LUG, 9" LONG	ASTM A-36	SEE DETAIL 9
10	1 EA	PLATE 4 1/2" SPACER BLOCK, 8" LONG	ASTM A-36	SEE DETAIL 3
11	1 EA	ROUND BAR 2 1/2", 2-LUG PIN	ASTM A-36	SEE DETAIL 1
12	4 EA	ROUND BAR 2 1/2", 3-LUG PIN	ASTM A-36	SEE DETAIL 2
13	5 EA	FB 2 1/2" PIN RETAINING TAB	ASTM A-36	SEE DETAIL 1
14	5 EA	HEX HEAD BOLT 1/2"-13 UNC 2A, PIN RETAINING BOLT	ASTM F593, TYPE 316 SS	-
15	5.5 SF	PLATE 3/8"	ASTM A-36	-
16	1 SF	PLATE 1/2", PADEYE	ASTM A-36	-
17	36 LF	STRUCTURAL TUBE 6x6x3/8	ASTM A500 GR B	-
18	4 LF	S-BEAM S10x35	ASTM A-36	-
19	9 LF	CHANNEL C7x19.1	ASTM A-36	-
20	53 LF	ANGLE L2x2x1/4	ASTM A-36	-
21	31 SF	EXPANDED METAL	CARBON STEEL	McNICHOLS 1/2" #135
22	AS REQ	BUSHING, 3" OD x 2 1/2" ID	BRONZE	-
23	1 EA	PLATE 2 1/2" LUG BASE PLATE, 10"x12"	ASTM A-36	SEE DETAIL 13



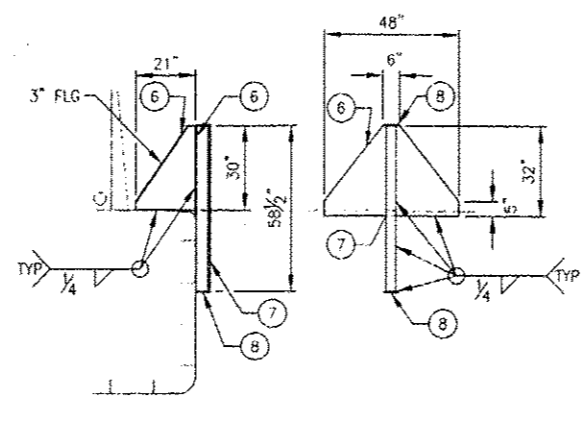
⚠ SHEET ADDED 9-6-2013

FILE NAME	USER NAME	DESIGNED - I. SNYDER	REVISED - REV A 07/21/2011	STATE OF ILLINOIS DEPARTMENT OF TRANSPORTATION	IDOT BRUSSELS FERRY TOW LINKAGE - DETAILS	F.A.P. RTE.	SECTION	COUNTY	TOTAL SHEET NO.	SHEET NO.
	PLOT SCALE	DRAWN - J. WALKER	REVISED -			761	101-1-2		64	64B
	PLOT DATE	CHECKED - P. WARDIN	REVISED -			SCALE: NTS SHEET NO. OF SHEETS STA. TO STA.		CONTRACT NO. 76G16		
		DATE - 10/04/2010	REVISED -			DRAWING NO. CEIDT001BA-611-202		ILLINOIS REG. AIO PROJECT		

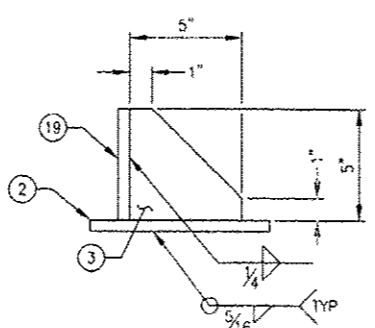
FOR INFORMATION ONLY



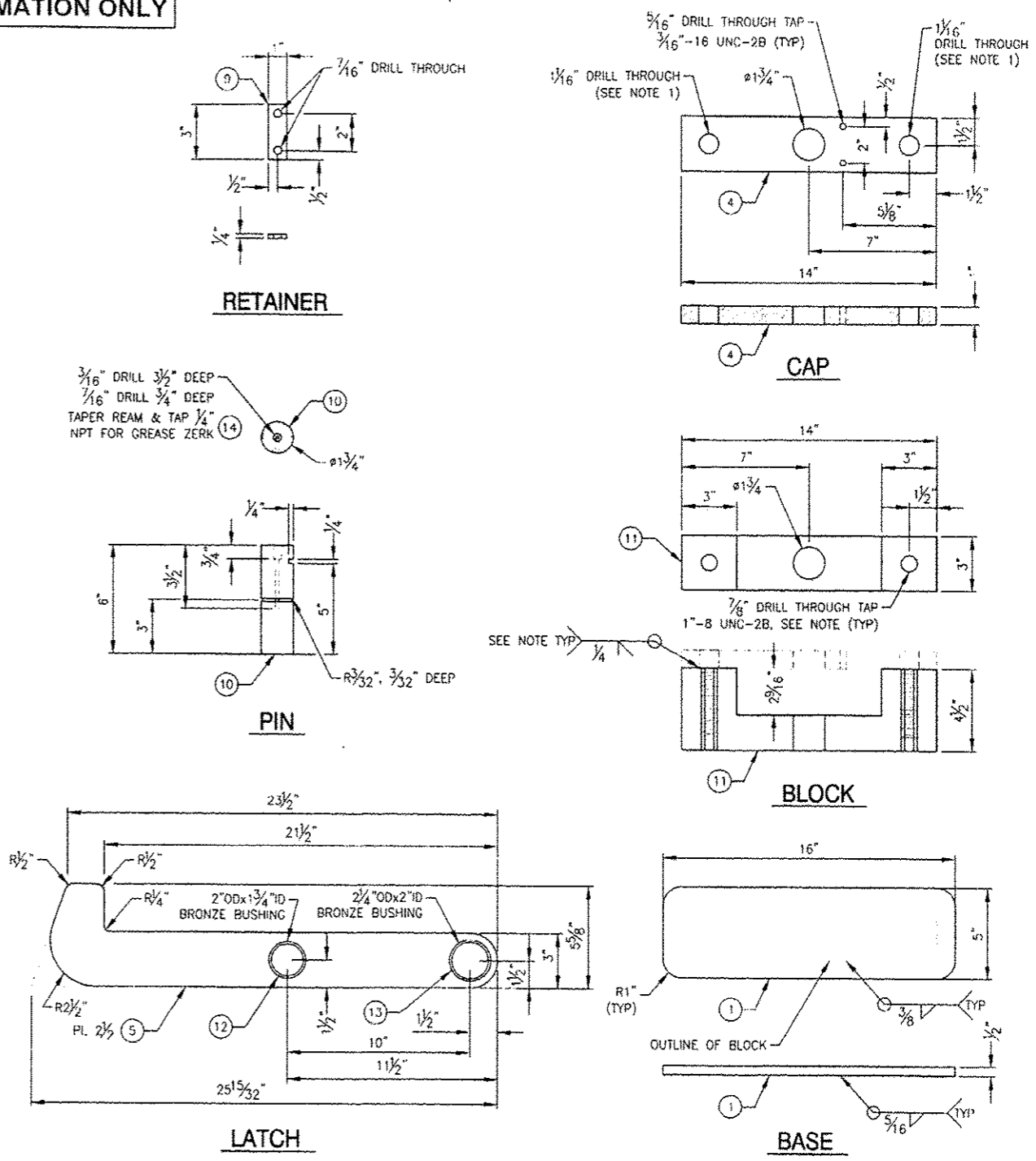
LATCH ASSEMBLY
SCALE: 1" = 1'-0"



TOWING LATCH HOOK ANGLE
SCALE: 3/8" = 1'-0"



CYLINDER FDN
SCALE: 3" = 1'-0"



LATCH AND LATCH FDN PIECES
SCALE: 3" = 1'-0"

NOTE:
1. "CAP" MAY BE WELDED TO "BLOCK"
THEREFORE BOLTS, HOLES & THREADED
HOLES MAY BE ELIMINATED

BILL OF MATERIAL			
PC NO.	QTY	DESCRIPTION	MATERIAL/SPECIFICATION/REMARKS
1	2 EA	BASE	1/2" PLATE, A-36, 5"x16"
2	2 EA	CYLINDER FDN BASE	1/2" PLATE, A-36, 8"x5"
3	2 EA	CYLINDER FDN BRACKET	1/2" PLATE, A-36, 5"x5"
4	2 EA	CAP	1" PLATE, A-36, 3"x14"
5	2 EA	LATCH	2 1/2" PLATE, A-36, 5 1/8" x 2 1/2"
6	4 EA	LATCH ANGLE BRACKET WITH 3" FLG	3/8" PLATE, A-36, 48"x32" & 21"x30"
7	2 EA	LATCH ANGLE	LSx3 1/2"x3/4"x67 1/2" LONG, A-36
8	4 EA	FB 3/8"x5"x5" LONG	A-36
9	2 EA	RETAINER	FB 1/4"x1", A-36, 3" LONG
10	2 EA	PIN	RB 1 1/4", 1045 STEEL, 6" LONG
11	2 EA	BLOCK	4 1/2" BAR, A-36, 3"x14"
12	2 EA	BUSHING	2"ODx1 1/4"IDx2 1/2" LONG, BRONZE PRESS FIT
13	2 EA	BUSHING	2 1/4"ODx2 1/4"IDx2 1/2" LONG, BRONZE PRESS FIT
14	2 EA	GREASE ZERK	COMMERCIAL, SST, 1/4" NPT
15	2 EA	PNEUMATIC CYLINDER	PARKER HANNIFIN 4.00CBB2AUSBACX6.875
16	2 EA	CLEVIS	PARKER HANNIFIN 50947
17	2 EA	PIN	PARKER HANNIFIN 6B373
18	2 EA	MOUNTING PLATE	PARKER HANNIFIN 69196
19	2 EA	CYLINDER FDN MOUNTING PLAT	1/2" PLATE, A-36, 5"x3 1/2"

△ SHEET ADDED 9-6-2013

FILE NAME =	USER NAME =	DESIGNED -- E SNYDER	REVISED -- REV A 07/21/2011	STATE OF ILLINOIS DEPARTMENT OF TRANSPORTATION	IDOT BRUSSELS FERRY TOW LINKAGE - LATCH	F.A.P. RTE.	SECTION	COUNTY	TOTAL SHEETS	SHEET NO.	
	PLOT SCALE =	DRAWN -- J WALKER	REVISED --			761	101-1-2		64	64C	
	PLOT DATE =	CHECKED -- P MARTIN	REVISED --			CONTRACT NO. 76G16					
		DATE -- 10/04/2010	REVISED --			DRAWING NO. CEIDT001BA-611-203					

