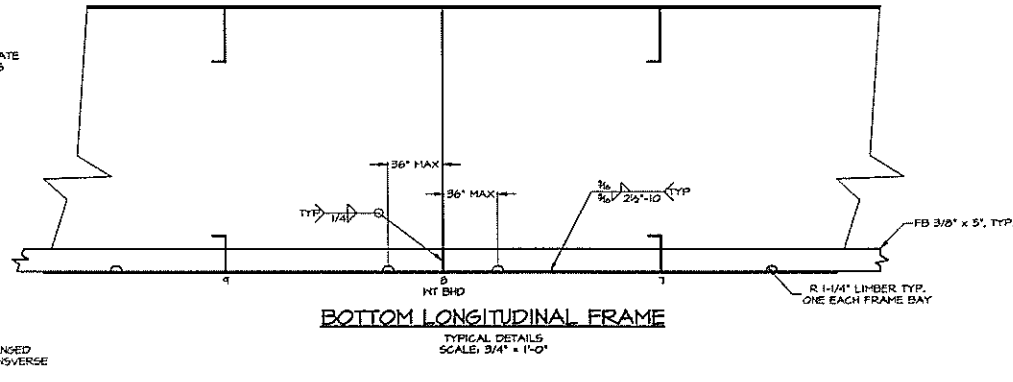
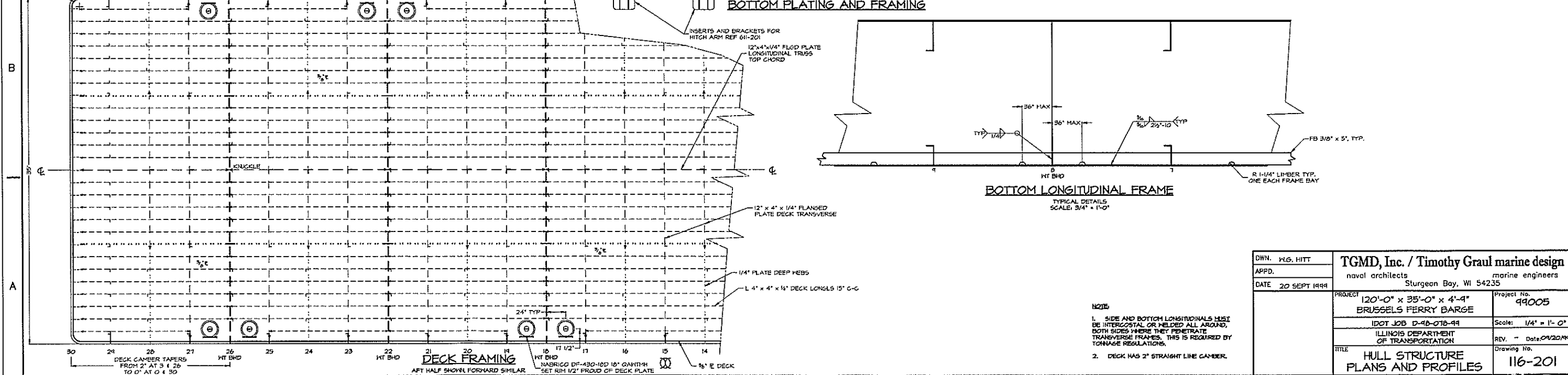
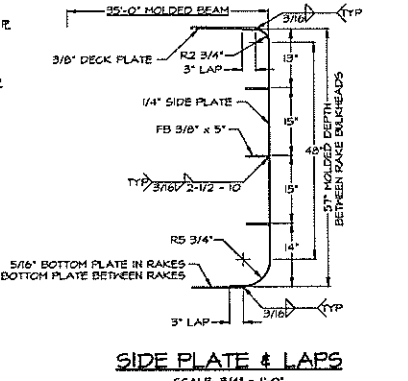
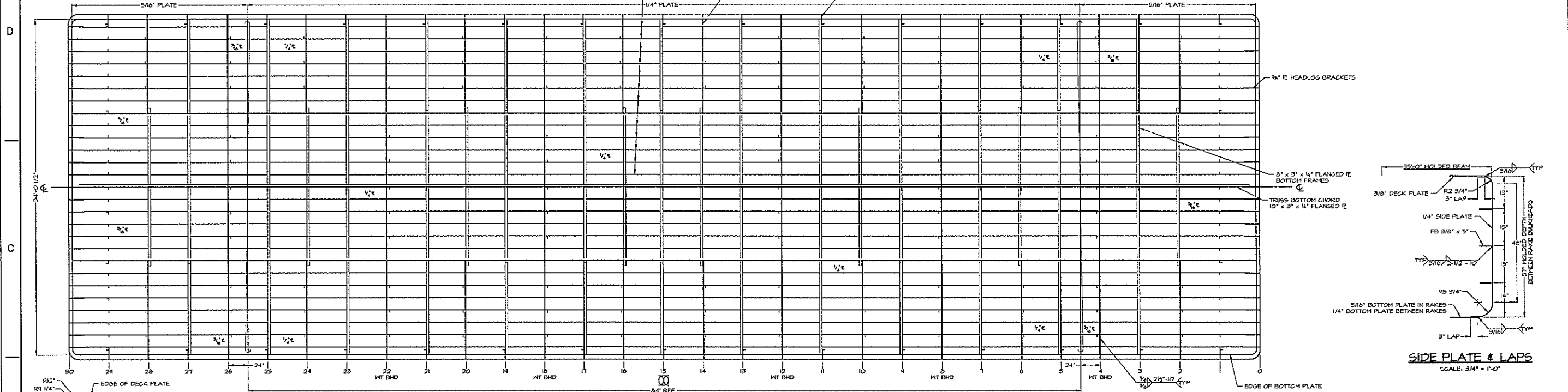
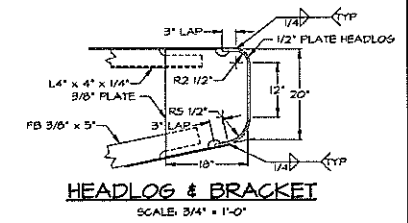
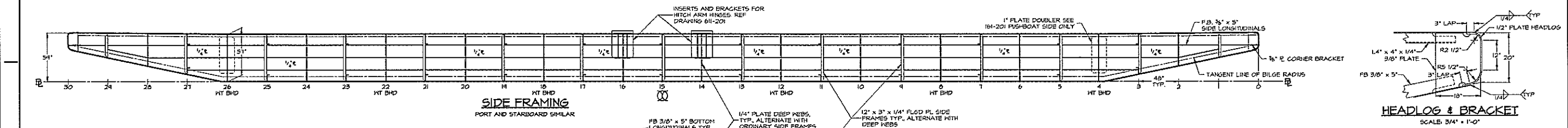
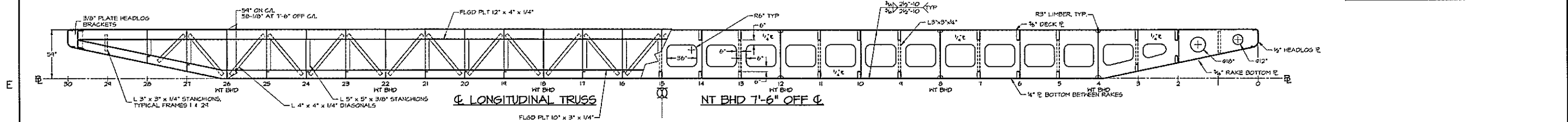


REVISIONS			
NO.	DESCRIPTION	DATE	APPROVED
1	FIRST ISSUE	09/23/99	



- NOTE
- SIDE AND BOTTOM LONGITUDINALS MUST BE INTERCOSTAL OR WELDED ALL AROUND, BOTH SIDES WHERE THEY PENETRATE TRANSVERSE FRAMES. THIS IS REQUIRED BY TONNAGE REGULATIONS.
 - DECK HAS 2\"/>

DWN. H.G. HITT	TGMD, Inc. / Timothy Graul marine design	
APPD.	naval architects	marine engineers
DATE 20 SEPT 1999	Sturgeon Bay, WI 54235	
PROJECT	120'-0" x 35'-0" x 4'-4" BRUSSELS FERRY BARGE	Project No. 99005
TITLE	HULL STRUCTURE PLANS AND PROFILES	Scale: 1/4" = 1'-0"
		REV. DATE 09/20/99
		Drawing No. 116-201

Prof. 99005 Dwg. 116-201 Rev. - TITLE HULL STRUCTURE - PLANS AND PROFILES