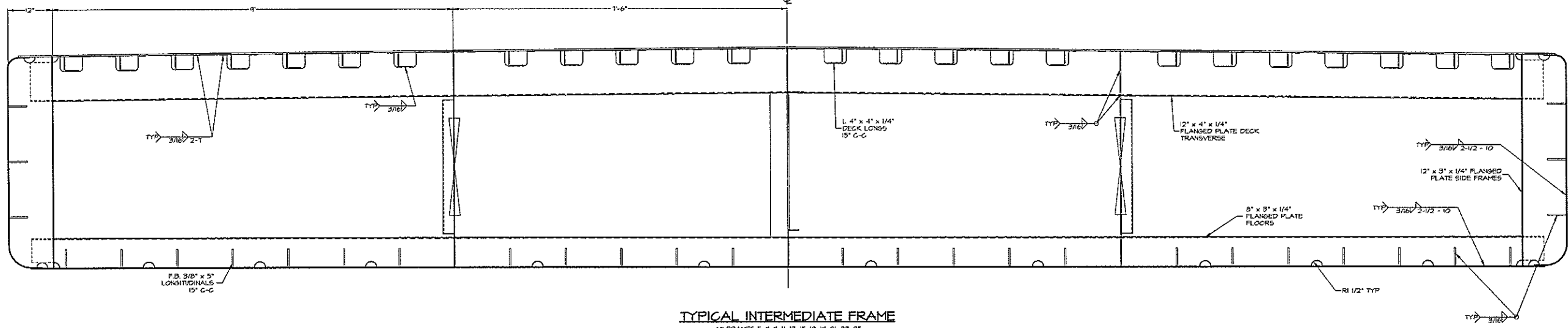
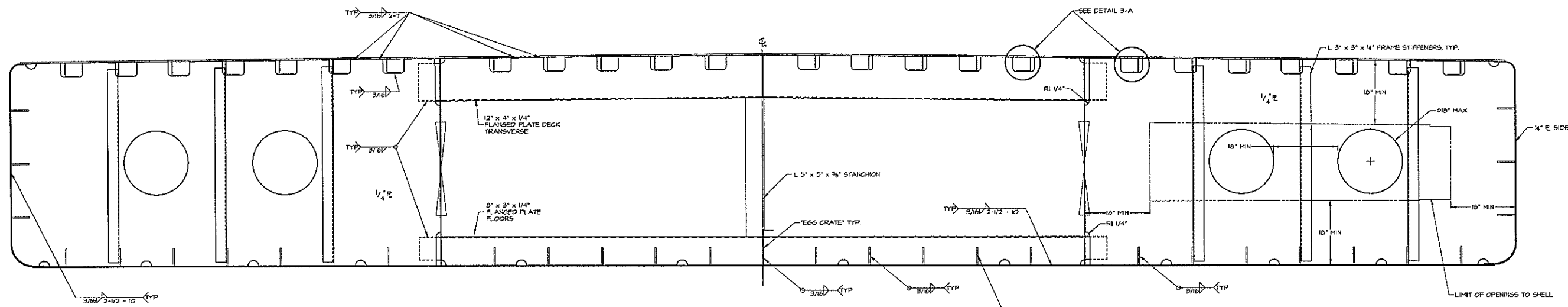


REVISIONS			
NO.	DESCRIPTION	DATE	APPROVED
1	FIRST ISSUE	09/20/99	

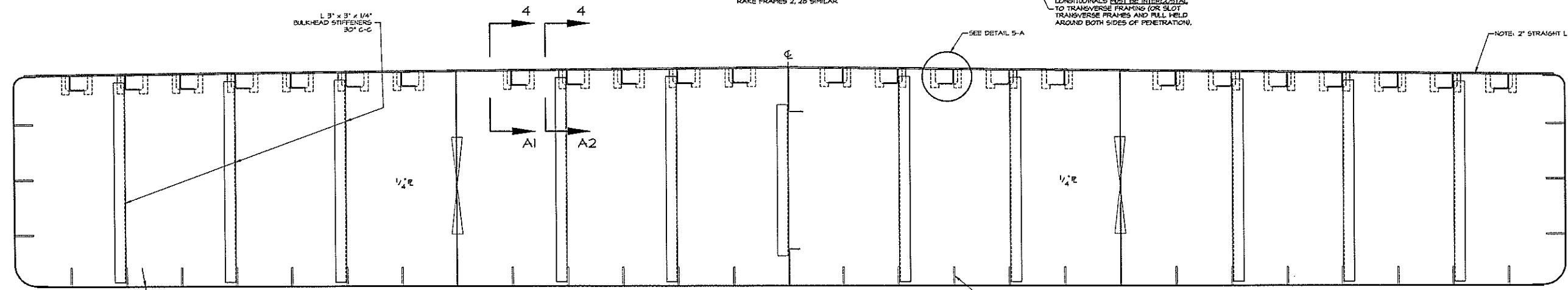


TYPICAL INTERMEDIATE FRAME
 AT FRAMES 5, 1, 9, 11, 13, 15, 17, 14, 21, 23, 25
 RAKE FRAMES 3, 21 SIMILAR

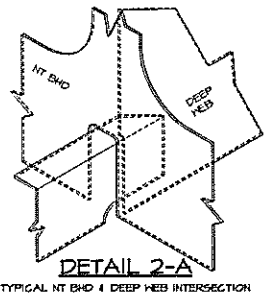
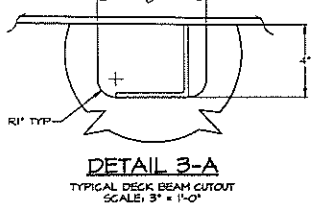
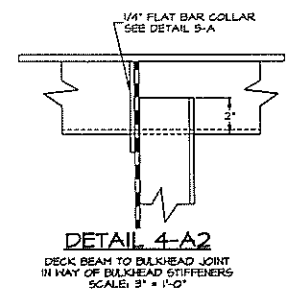
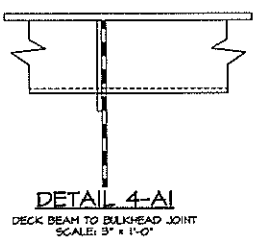
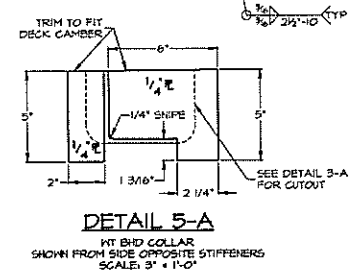


TYPICAL DEEP FRAME
 AT FRAMES 6, 10, 14, 16, 20, 24
 RAKE FRAMES 2, 28 SIMILAR

NOTE: BOTTOM AND SIDE LONGITUDINALS MUST BE INTERCOSTAL TO TRANSVERSE FRAMING (OR SLOT TRANSVERSE FRAMES AND FULL WELD AROUND BOTH SIDES OF PENETRATION).



TYPICAL WATERTIGHT BULKHEAD
 AT FRAMES 4, 8, 12, 16, 22, 26



DWN. K.G. HITT	TGMD, Inc. / Timothy Graul marine design	
APPD.	naval architects	marine engineers
DATE 20 SEPT 1999	Sturgeon Bay, WI 54235	
PROJECT	120'-0" x 35'-0" x 4'-9" BRUSSELS FERRY BARGE	Project No. 99005
	IDOT JOB D-48-07B-99	Scale: 1" = 1'-0"
	ILLINOIS DEPARTMENT OF TRANSPORTATION	REV. - Date 09/20/99
TITLE	HULL STRUCTURE SECTIONS	Drawing No. 117-201

Prof. 99005 Dwg. 117-201 Rev. - Title HULL STRUCTURE - SECTIONS