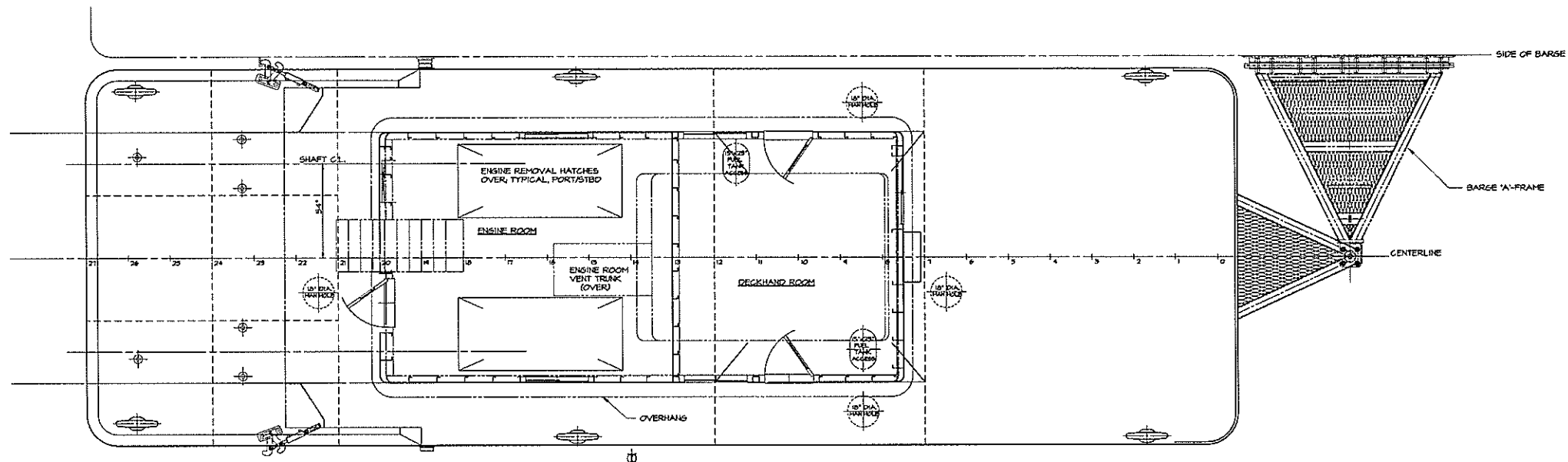
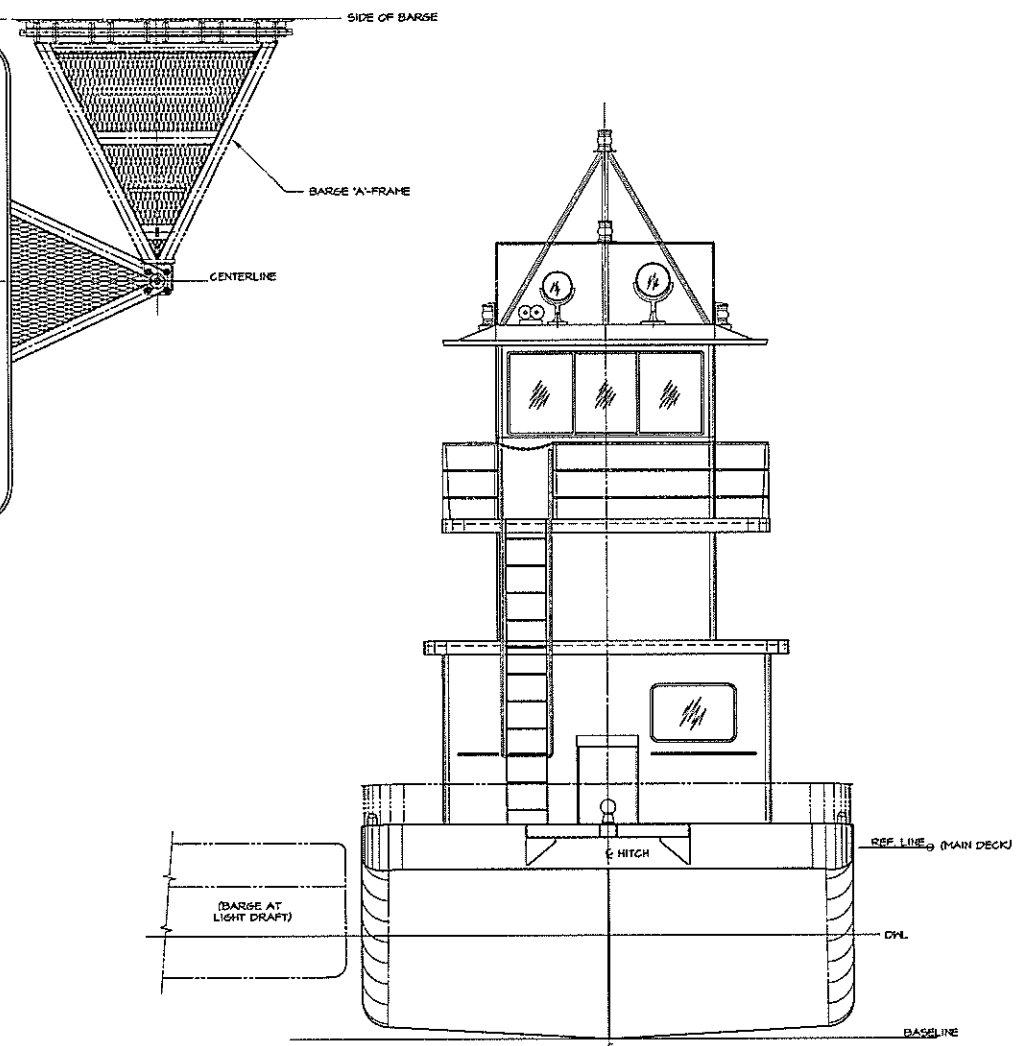


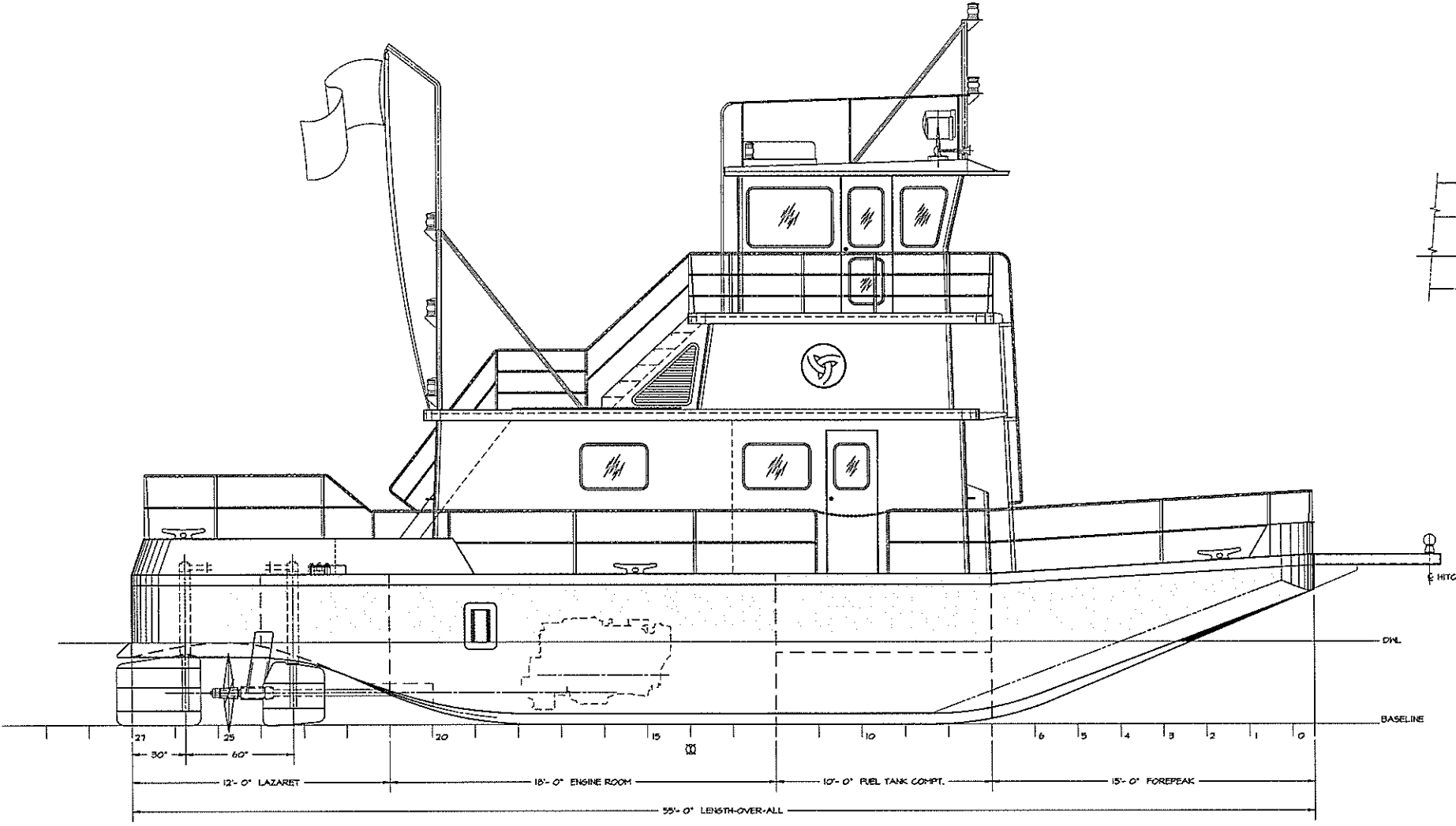
REVISIONS			
NO.	DESCRIPTION	DATE	APPROVED
1	FIRST ISSUE	07/30/99	
A	REVISES BILGE FROM CAINE TO ROUND	1/13/00	



MAIN DECK PLAN



BOW ELEVATION



STARBOARD PROFILE

**PARTICULARS**

LENGTH OVERALL	55'-0"
BEAM	18'-0"
DEPTH	7'-0"
HULL DRAFT	3'-10"
PROJECTION DRAFT	4'-2" (MAX)
DISPLACEMENT (NORMAL OPERATION)	60 LONG TONS
PROFUSION	THIN SHEET DIESEL ENGINES
ROUTE/CLASS	UNINSPECTED

DWN. J.C. Birmingham	<b>TGMD, Inc. / Timothy Graul marine design</b>	
APPD.	naval architects	marine engineers
DATE 30 JULY 1999	Sturgeon Bay, WI 54235	
PROJECT	55'-0" x 18'-0" x 7'-0" BRUSSELS FERRY PUSHBOAT	Project No. 99005
IDOT JOB D-18-078-99	ILLINOIS DEPARTMENT OF TRANSPORTATION	Scale: 3/8" = 1'-0"
REV. A	Date: 1/13/00	Drawing No. 801-101
TITLE GENERAL ARRANGEMENT		

Proj. 8005 Dwg. 801-101 Rev. A Title Title GENERAL ARRANGEMENT