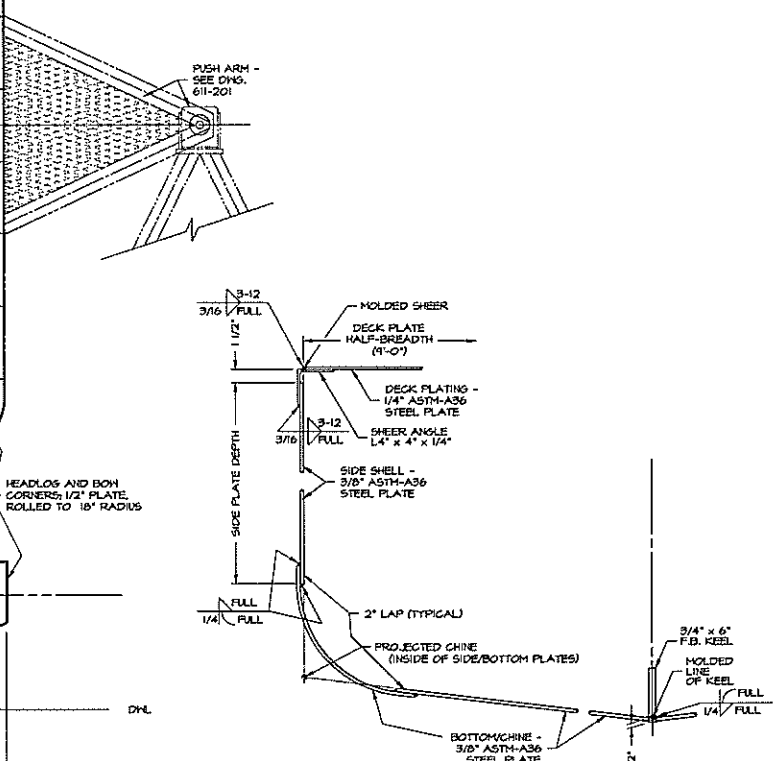
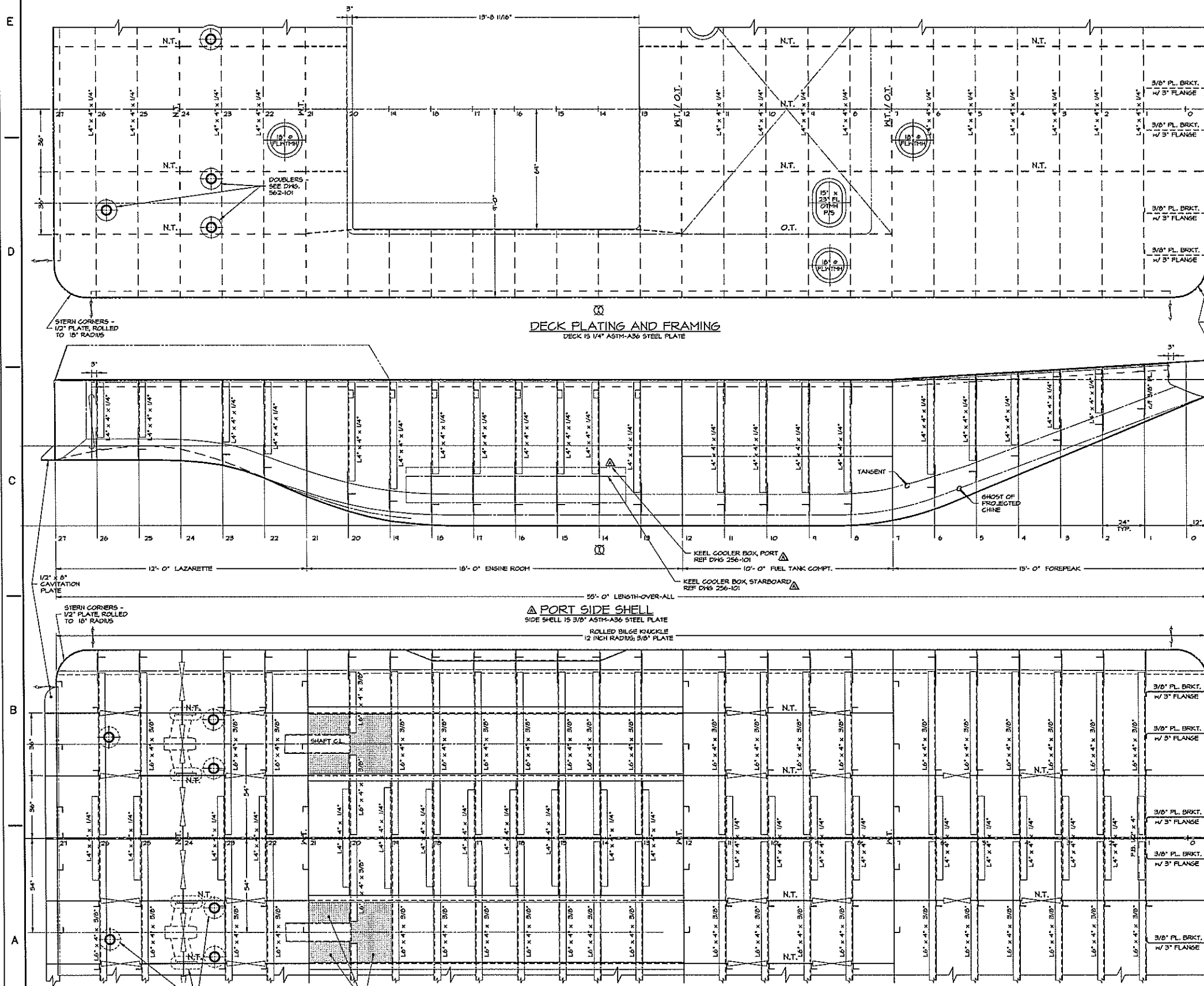
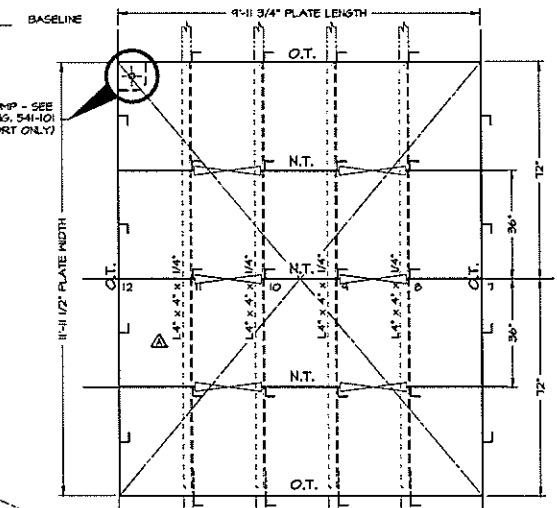


REVISIONS			
NO.	DESCRIPTION	DATE	APPROVED
A	1) REVISES HARD CHINE BILGE TO ROUNDED PER BUILDER'S REQUEST. 2) ADDS AND CORRECTS MISC. DETAILS. 3) SHOWS KEEL COOLER BOXES. 4) REVISES TANK BOTTOM TRANSVERSE BEAMS FROM L5'X3'X5/16" TO L4'X4'X1/4".	5/3/00	



▲ MOLDED LINES AND PLATE SEAMS
SCALE: 1 1/2\"/>



▲ FUEL TANK BOTTOM
LOCATED 48 INCHES BELOW MAIN DECK
TANK BOTTOM IS 1/4\"/>

DWN. RJK, Thompson	TGMD, Inc. / Timothy Graul marine design	
APPD.	naval architects	marine engineers
DATE 16 JULY 1999	Sturgeon Bay, WI 54235	
	PROJECT 55'-0\"/>	Project No. 49005
	BRUSSELS FERRY PUSHBOAT	Scale: 1/2\"/>
	IDOT JOB D-40-018-49	REV. A Date: 5/3/00
	ILLINOIS DEPARTMENT OF TRANSPORTATION	Drawing No. III-101
	TITLE SHELL AND DECK PLATING AND FRAMING	

Proj. 49005 Dwg. III-101 Rev. A Title SHELL AND DECK PLATING AND FRAMING