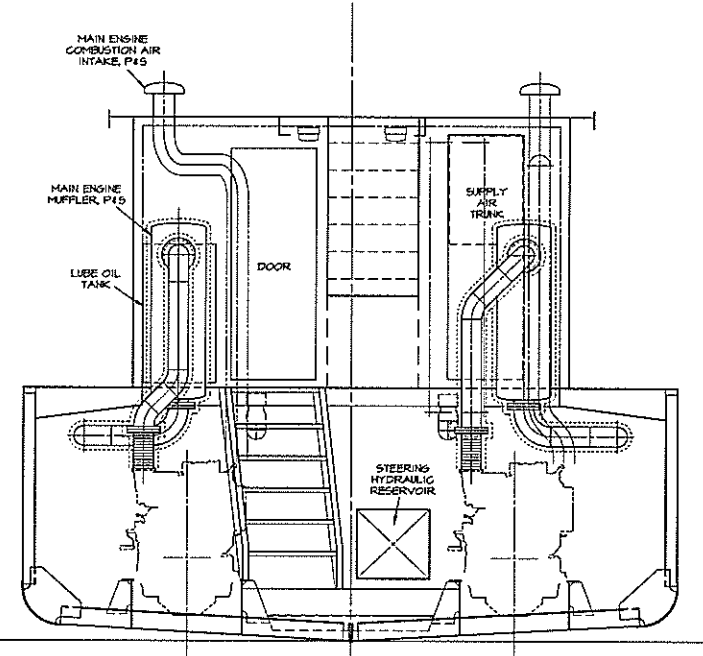
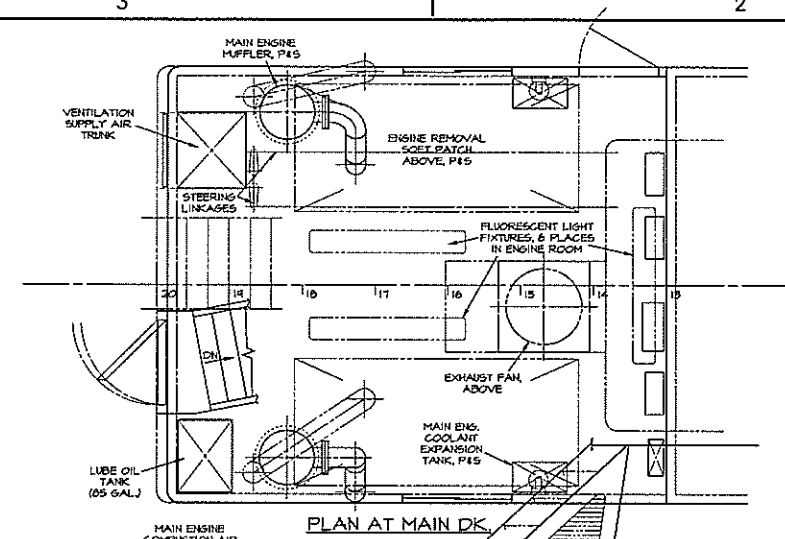
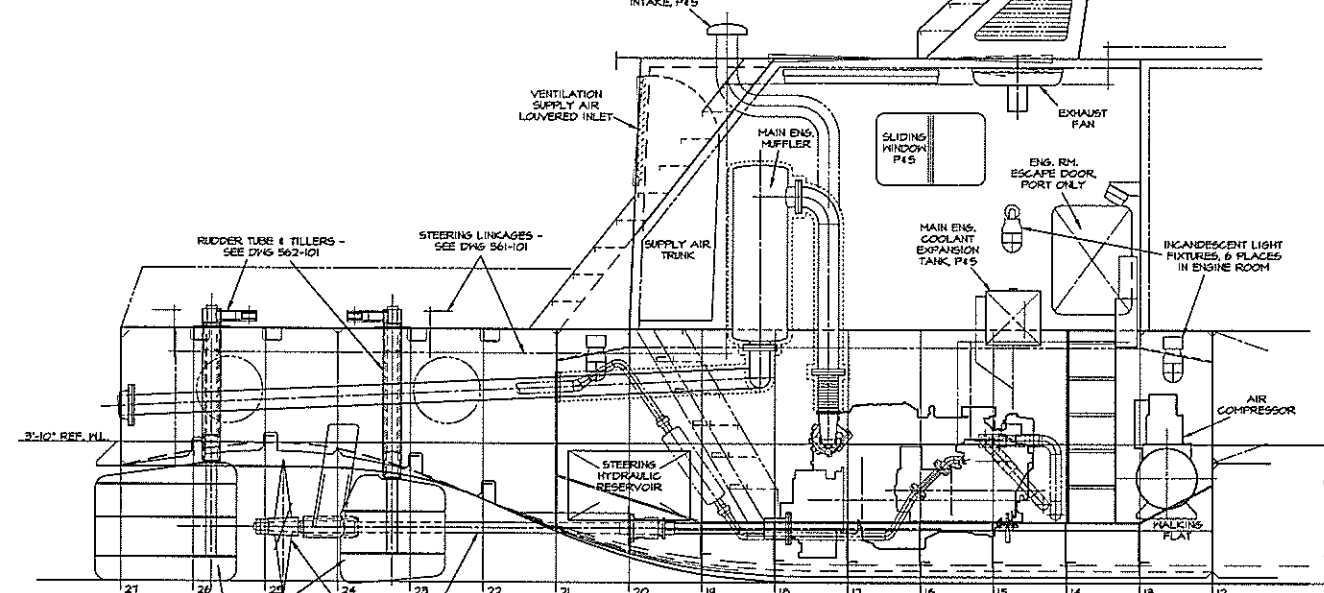


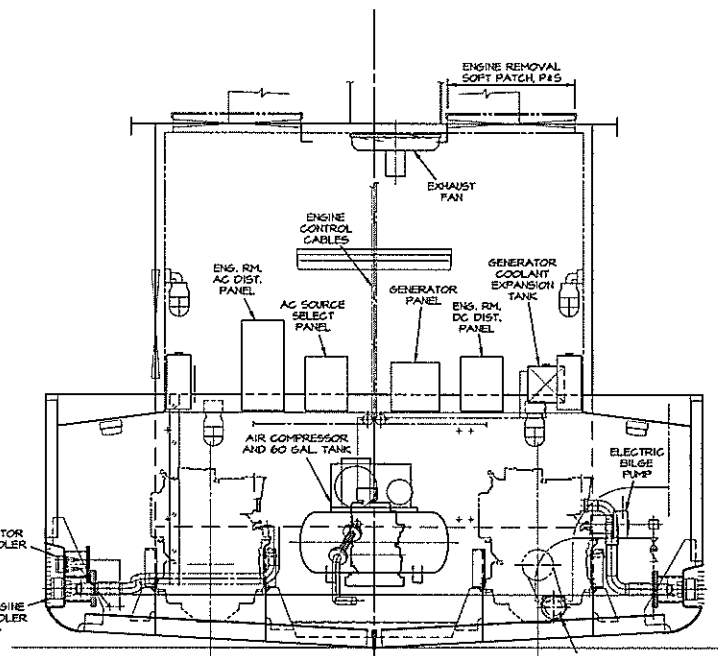
REVISIONS			
LT#	DESCRIPTION	DATE	APPROVED
A	REVISES BILGE FROM CHINE TO ROUND	1/13/00	
B	LOWER ENG. RM. MAKING FLAT 3" BELOW FLANGES	8/1/00	



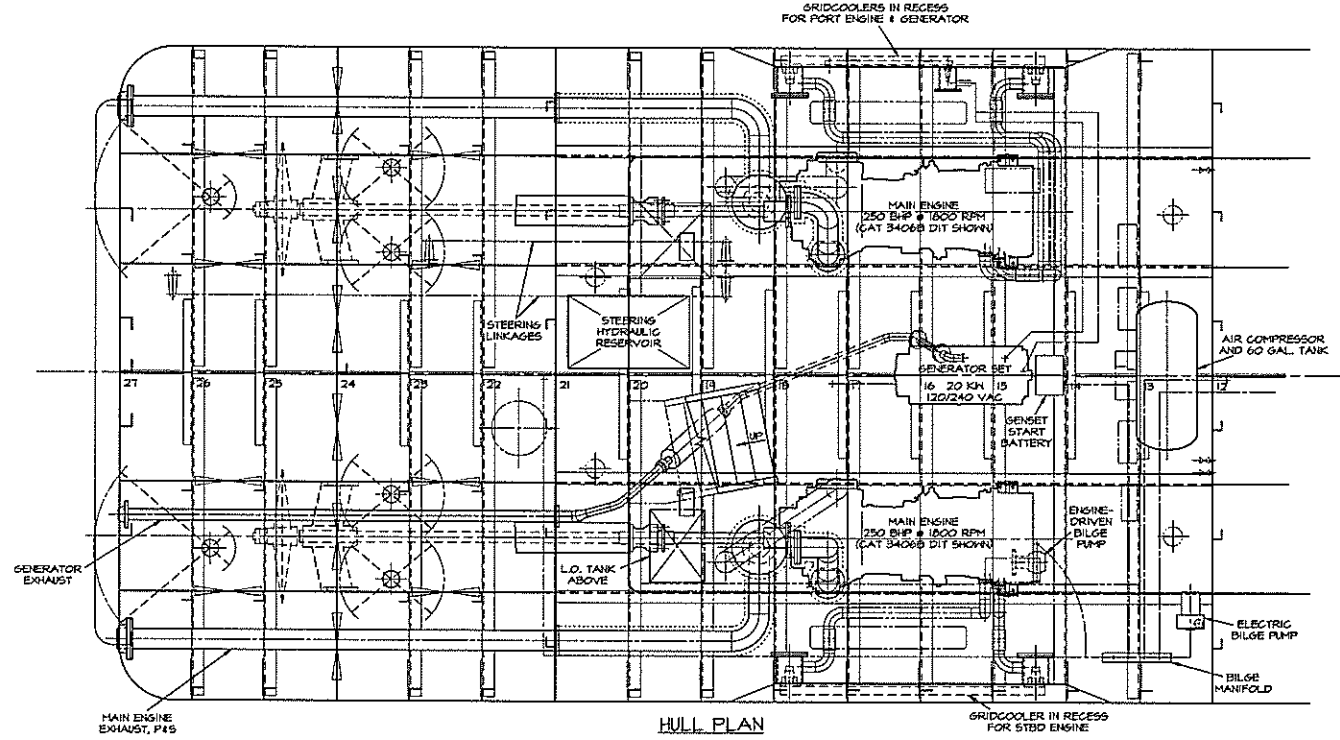
SECTION LOOKING AFT
FROM FRAME 10 1/2



PORT ELEVATION



SECTION LOOKING FORWARD
FROM FRAME 15 1/2



HULL PLAN

NOTES

1. ARRANGEMENT IS SHOWN WITH CATERPILLAR 3406B DIT MAIN PROPULSION ENGINES. OTHER ENGINES OF EQUIVALENT RATING (SUCH AS CUMMINS HT 655-M) MAY BE SUBSTITUTED.

DWN. MDP	TGMD, Inc. / Timothy Graul marine design	Project No.
APPD.		99005
DATE 20 JULY 1999	naval architects Sturgeon Bay, WI 54235	marine engineers
	PROJECT 55'-0" x 18'-0" x 7'-0" BRUSSELS FERRY PUSHBOAT	Scale: 1/2" = 1'-0"
	IDOT JOB D-48-078-99	REV. B Date: 8/1/00
	ILLINOIS DEPARTMENT OF TRANSPORTATION	Drawing No.
	TITLE MACHINERY ARRANGEMENT	233-101

Proj. 99005 Dwg. 233-101 Rev. B Title MACHINERY ARRANGEMENT