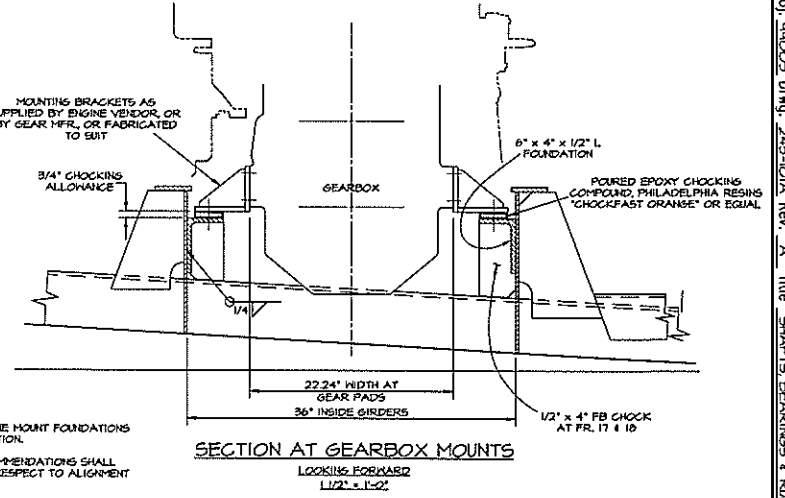
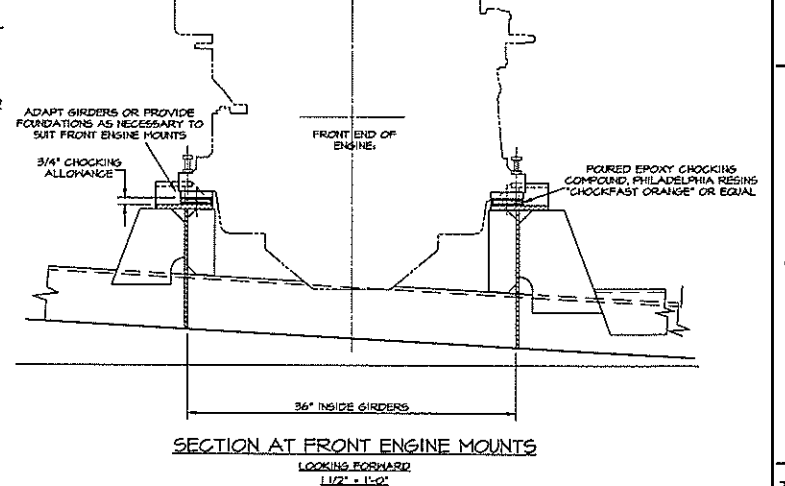
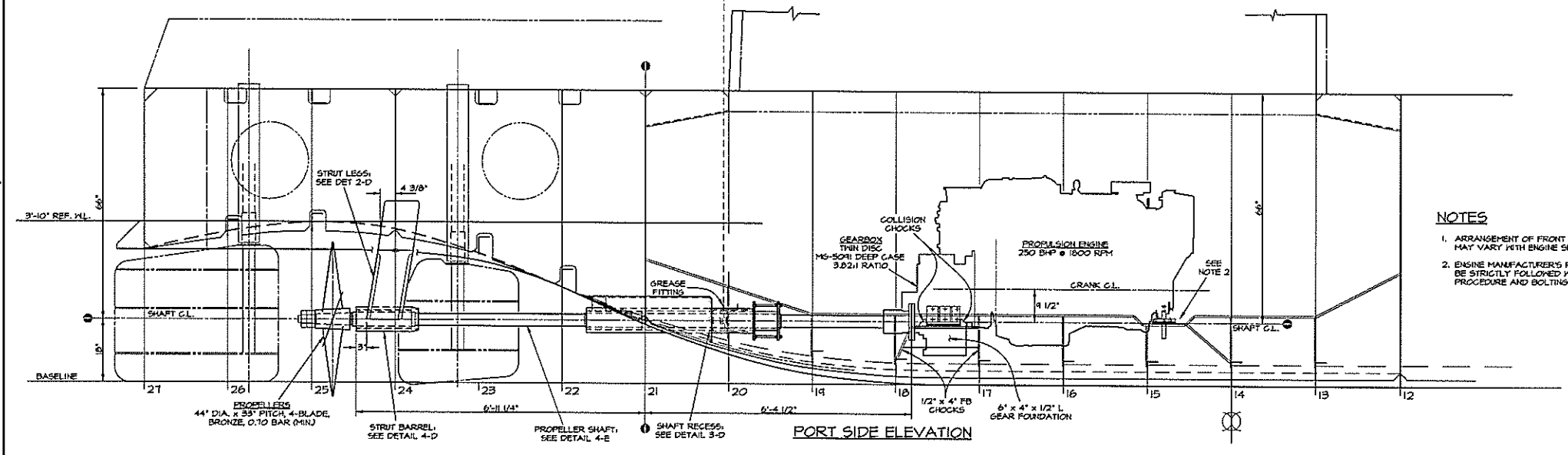
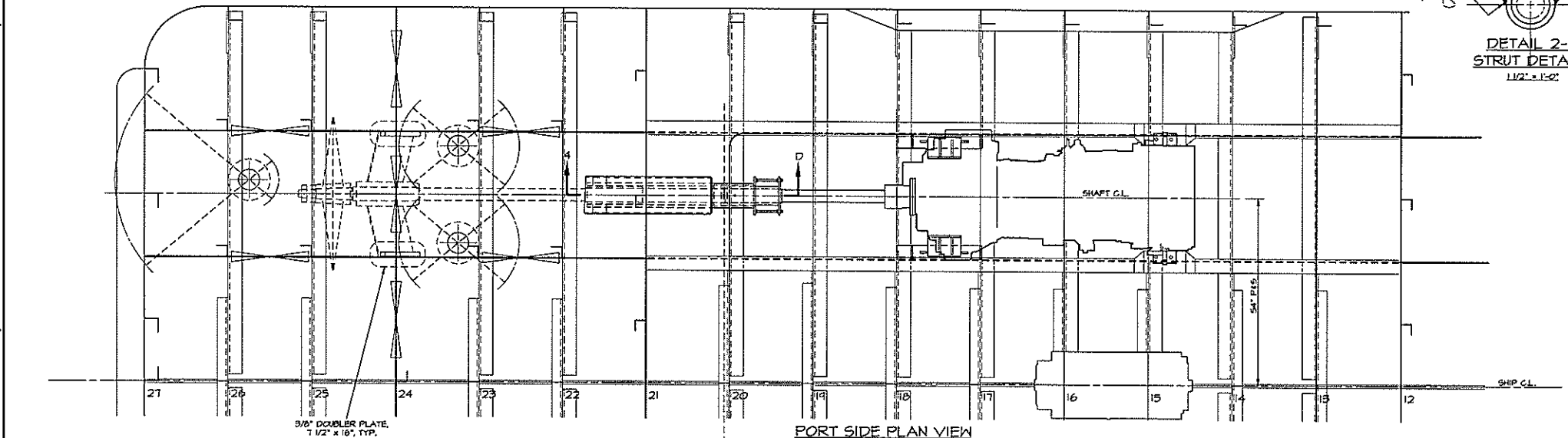
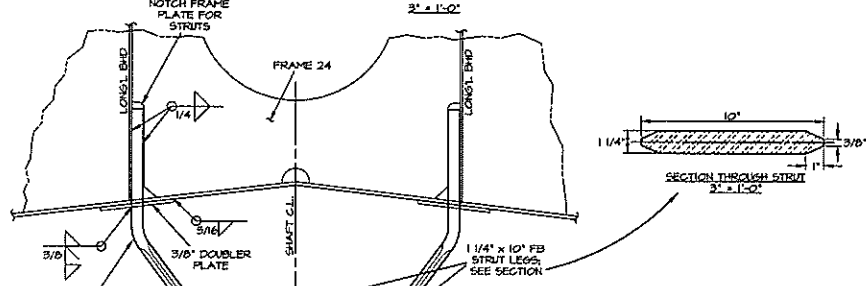
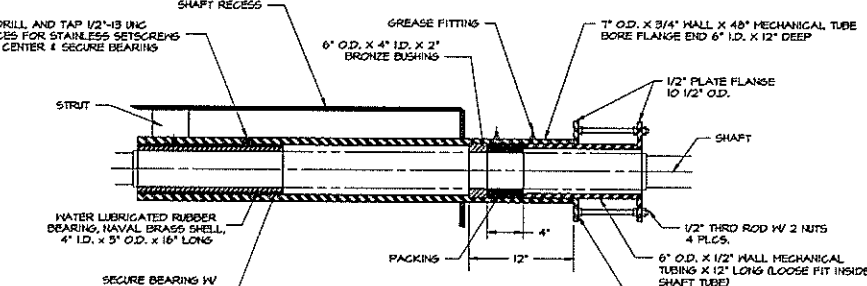
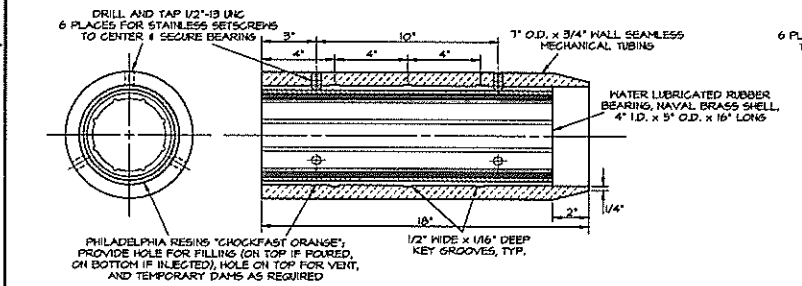
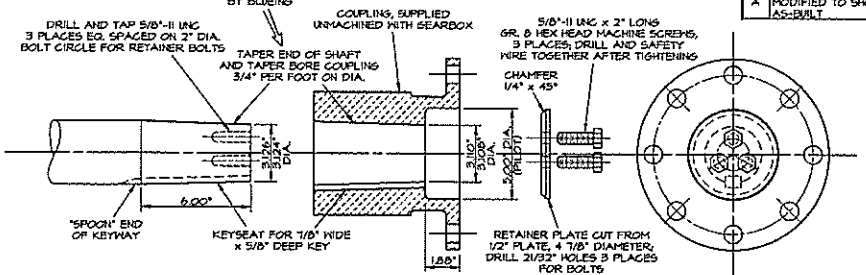
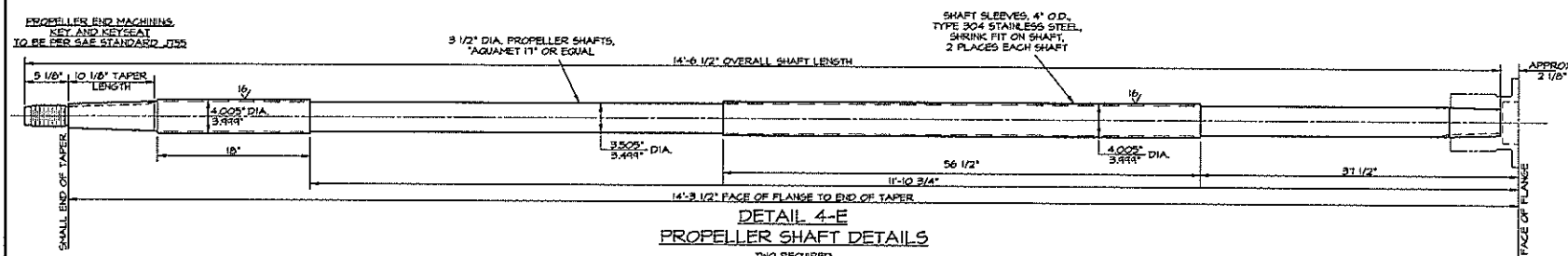


REVISIONS		
NO.	DESCRIPTION	DATE
1	MODIFIED TO SHOW ARRANGEMENT AS-BUILT	8/06/01



- NOTES**
- ARRANGEMENT OF FRONT ENGINE MOUNT FOUNDATIONS MAY VARY WITH ENGINE SELECTION.
 - ENGINE MANUFACTURER'S RECOMMENDATIONS SHALL BE STRICTLY FOLLOWED WITH RESPECT TO ALIGNMENT PROCEDURE AND BOLTING.

DWN. MDP	TGMD, Inc. / Timothy Graul marine design
APPD.	naval architects marine engineers
DATE 20 SEPT 1999	Sturgeon Bay, WI 54235
PROJECT 55'-0" x 18'-0" x 7'-0" BRUSSELS FERRY PUSHBOAT	Project No. 99005
ILLINOIS DEPARTMENT OF TRANSPORTATION	Scale: 3/4" = 1'-0"
TITLE SHAFTS, BEARINGS & RUNNING GEAR	REV. A Date: 8/06/01 Drawing No. 243-101A

Proj. 49005 Dwg. 243-101A Rev. A Title SHAFTS, BEARINGS & RUNNING GEAR