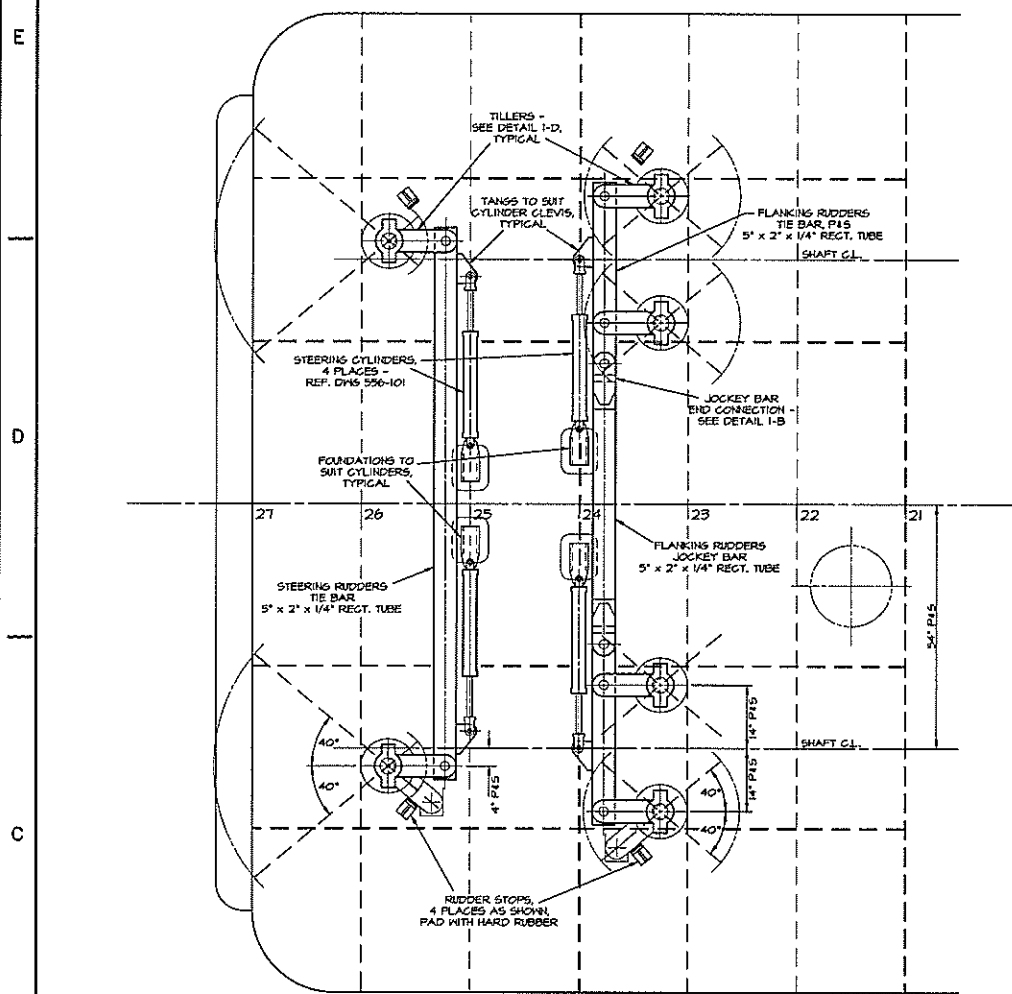
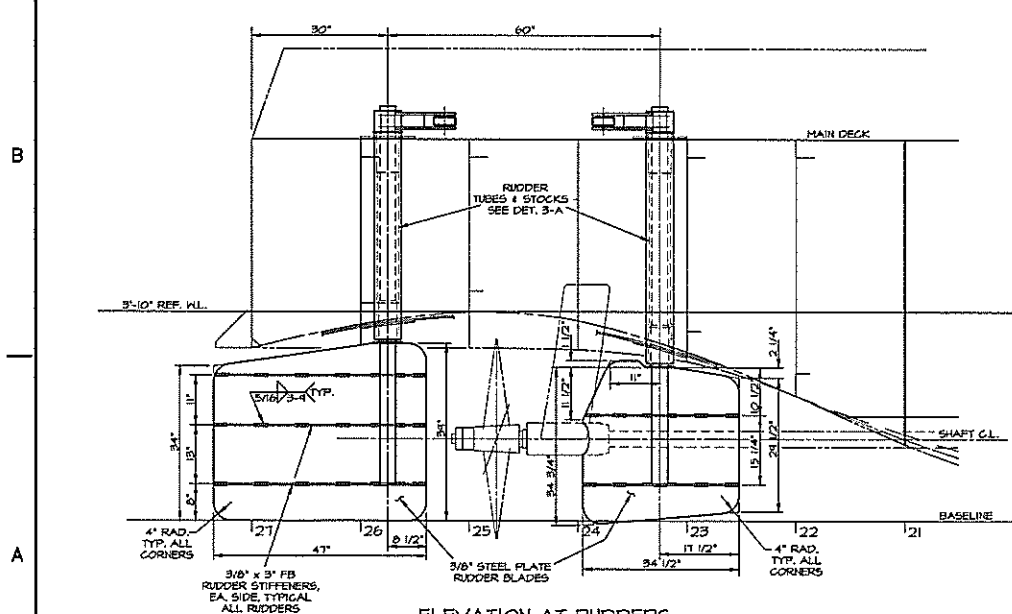


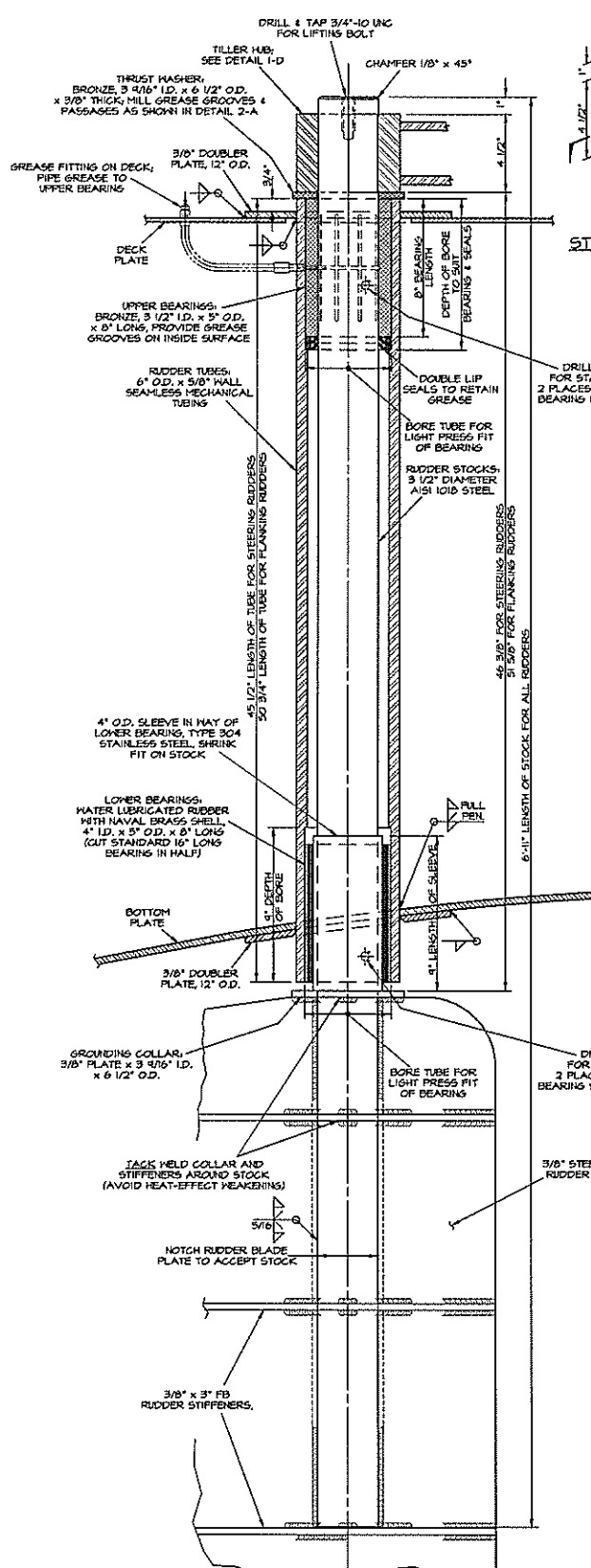
REVISIONS			
NO.	DESCRIPTION	DATE	APPROVED
1	FIRST ISSUE	9/20/99	



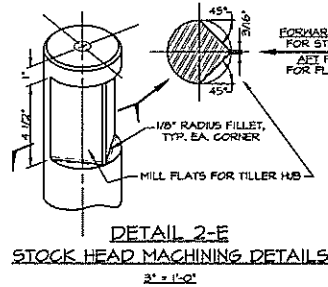
PLAN VIEW AT MAIN DECK  
3/4" = 1'-0"



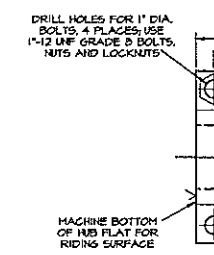
ELEVATION AT RUDDERS  
3/4" = 1'-0"



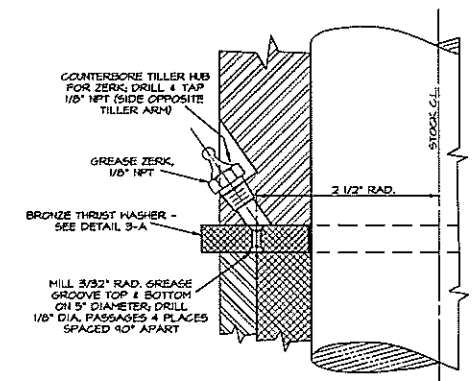
DETAIL 3-A  
RUDDER TUBES AND STOCKS  
2 EACH REQ'D FOR STEERING RUDDERS, 4 EACH REQ'D FOR FLANKING RUDDERS  
(STEERING RUDDER SHOWN)  
3/4" = 1'-0"



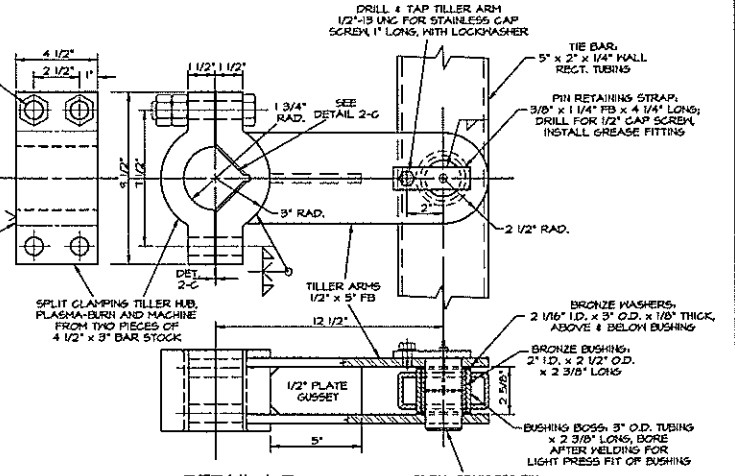
DETAIL 2-E  
STOCK HEAD MACHINING DETAILS  
3/4" = 1'-0"



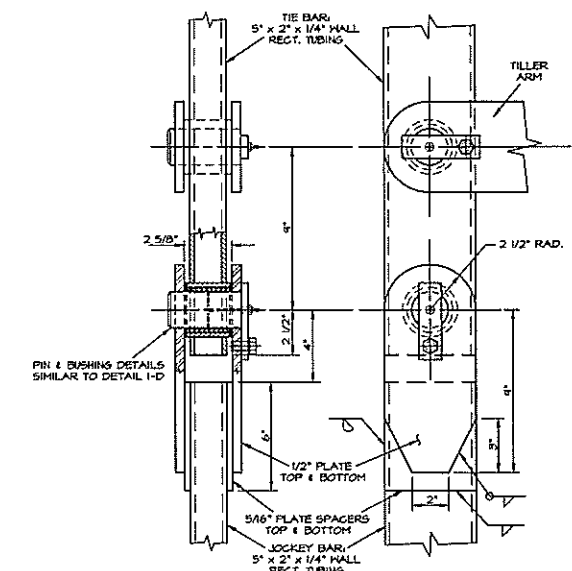
DETAIL 2-C  
TILLER HUB DETAILS  
1/2" = 1'-0"



DETAIL 2-A  
THRUST WASHER & GREASE FITTING  
TYPICAL EACH TILLER  
FULL SIZE



DETAIL 1-D  
TILLER & TIE ROD DETAILS  
3/4" = 1'-0"



DETAIL 1-B  
JOCKEY BAR END CONNECTION  
3/4" = 1'-0"

OWN. MDP	TGMD, Inc. / Timothy Graul marine design	
APPD.	naval architects marine engineers	
DATE 20 SEPT 1999	Sturgeon Bay, WI 54235	Project No. 99005
	PROJECT 55'-0" x 16'-0" x 7'-0" BRUSSELS FERRY PUSHBOAT	Scale: 3/4" = 1'-0"
	IDOT JOB D-18-07B-99	REV. " Date: 9/20/99
	ILLINOIS DEPARTMENT OF TRANSPORTATION	Drawing No. 562-101
	TITLE RUDDERS, TILLERS & TUBES	

Proj. 562-101 Rev. - Title RUDDERS, TILLERS & TUBES