

F.A.P. RTE.	SECTION	COUNTY	TOTAL SHEETS	SHEET NO.
332	2B-1	WHITE	52	1
		ILLINOIS	CONTRACT NO. 78103	

STATE OF ILLINOIS
DEPARTMENT OF TRANSPORTATION
DIVISION OF HIGHWAYS

**PROPOSED
HIGHWAY PLANS**

F.A.P. ROUTE 332 (IL ROUTE 1)
SECTION 2B-1
PROJECT ACNHPP-0332(116)
WHITE COUNTY
C-99-018-09
STRUCTURE REPLACEMENT
IL 1 OVER FLANDERS CREEK



TRAFFIC DATA

FUNCTIONAL CLASSIFICATION:	OTHER PRINCIPAL ARTERIAL
DESIGN SPEED:	55 MPH
POSTED SPEED:	55 MPH
ADT:	4240 (2008)
	5180 (2028)
PV:	83%
TRUCKS:	17%

STATE OF ILLINOIS
DEPARTMENT OF TRANSPORTATION
DIVISION OF HIGHWAYS

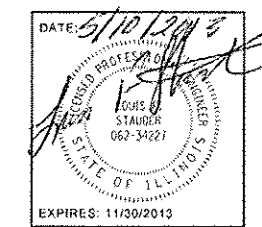
SUBMITTED *May 22* 20 *13*

John D. Baranelli, PE, Ia
DEPUTY DIRECTOR OF HIGHWAYS, REGION ENGINEER

John D. Baranelli, PE, Ia
acting ENGINEER OF DESIGN AND ENVIRONMENT

Orser Osman, PE, Ia
Aug 16 20 13
DIRECTOR OF HIGHWAYS, CHIEF ENGINEER

**PRINTED BY THE AUTHORITY
OF THE STATE OF ILLINOIS**



INDEX OF SHEETS

SHEET NO.	DESCRIPTION
1.	COVER SHEET
2.	GENERAL NOTES AND STANDARDS
3.-8.	SUMMARY OF QUANTITIES
9.	TYPICAL SECTIONS
10.-11.	SCHEDULE OF QUANTITIES
12.	ALIGNMENT TIES AND BENCHMARKS
13.-14.	PLAN & PROFILE
15.	STAGE I CONSTRUCTION
16.	STAGE II CONSTRUCTION
17.	MISCELLANEOUS DETAILS (GUARDRAIL)
18.	GUARDRAIL LAYOUT
19.	EROSION CONTROL PLAN
20.	PAVEMENT MARKING PLAN
21.	PAVED SHOULDER LAYOUT
22.	WIDE LOAD DETOUR
23.-24.	DISTRICT DETAILS
25.-42.	STRUCTURE PLANS
43.	SOIL BORING
44.-52.	CROSS SECTIONS

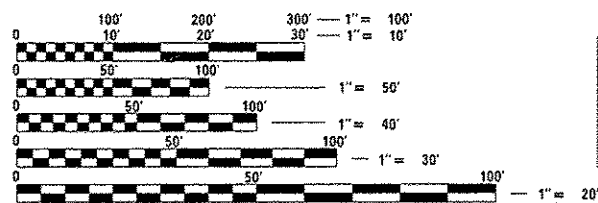
UTILITIES

FIBER OPTIC TRANSMISSION
CLEARWAVE COMMUNICATIONS
P.O. BOX 808
HARRISBURG, IL 62946
ATTN: AARON CARIAN

NATURAL GAS
CONSUMERS GAS
P.O. BOX 486
CARMi, IL 62821
ATTN: KEVIN BRATCHER

FIBER OPTIC AND CABLE PHONE LINE
FRONTIER COMMUNICATIONS
200 W. CHERRY
CARMi, IL 62821
ATTN: JIM CLARK

ELECTRIC
WAYNE-WHITE ELECTRIC COOP
P.O. BOX DRAWER E
FAIRFIELD, IL 62837
ATTN: ERIN HALLEY



CARMi TOWNSHIP

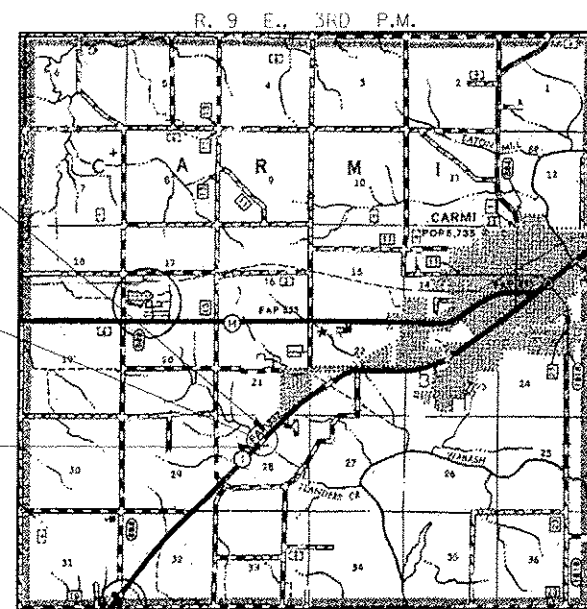
FULL SIZE PLANS HAVE BEEN PREPARED USING STANDARD ENGINEERING SCALES. REDUCED SIZED PLANS WILL NOT CONFORM TO STANDARD SCALES. IN MAKING MEASUREMENTS ON REDUCED PLANS, THE ABOVE SCALES MAY BE USED.

J.U.L.I.E.
JOINT UTILITY LOCATION INFORMATION FOR EXCAVATION
1-800-892-0123
OR 811

STA. 582+23.90
SINGLE SPAN STEEL WIDE FLANGE BEAM
BRIDGE, 60'-0" BK TO BK ABUTMENTS
36' CLEAR WIDTH; SKEW = 0°
EXISTING STRUCTURE NO. 097-0010
PROPOSED STRUCTURE NO. 097-0074

IMPROVEMENT BEGINS
STATION 581+57.90

IMPROVEMENT ENDS
STATION 582+89.90



LOCATION MAP

APPROXIMATE SCALE: 0 1 MILE

NET LENGTH OF PROJECT = 132 FEET = 0.025 MILES
GROSS LENGTH OF PROJECT = 132 FEET = 0.025 MILES
ROADWAY LENGTH = 72 FEET = 0.014 MILES
BRIDGE LENGTH = 60 FEET = 0.011 MILES

HAMPTON, LENZINI AND RENWICK, INC.
CIVIL ENGINEERS • STRUCTURAL ENGINEERS • LAND SURVEYORS
HLR
3085 STEVENSON DRIVE, SUITE 201
SPRINGFIELD, ILLINOIS 62703
217.546.3400 www.hlrengineering.com

184.000959
ILLINOIS PROFESSIONAL DESIGN FIRM LS / PE / SE CORPORATION

CONTRACT NO. 78103

PROJECT ENGINEER: DAVID PICHE (618) 351-5227