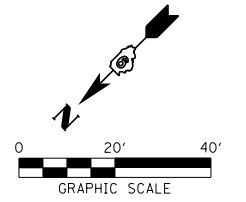
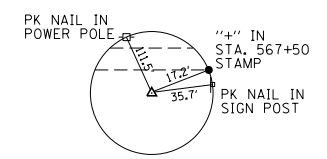


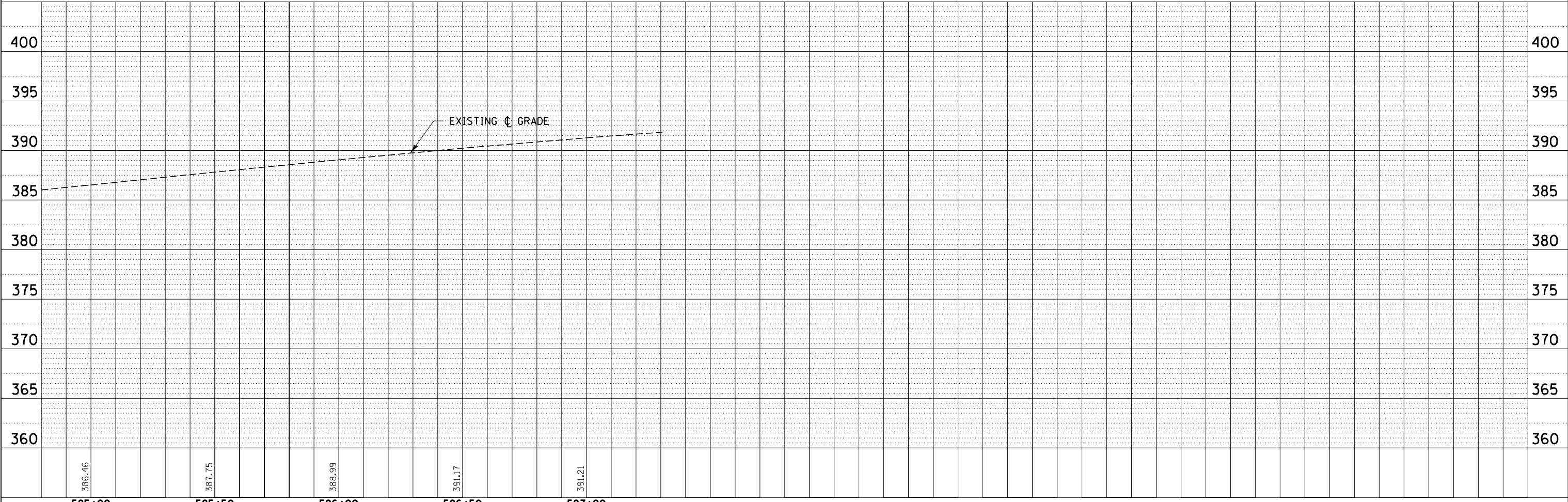
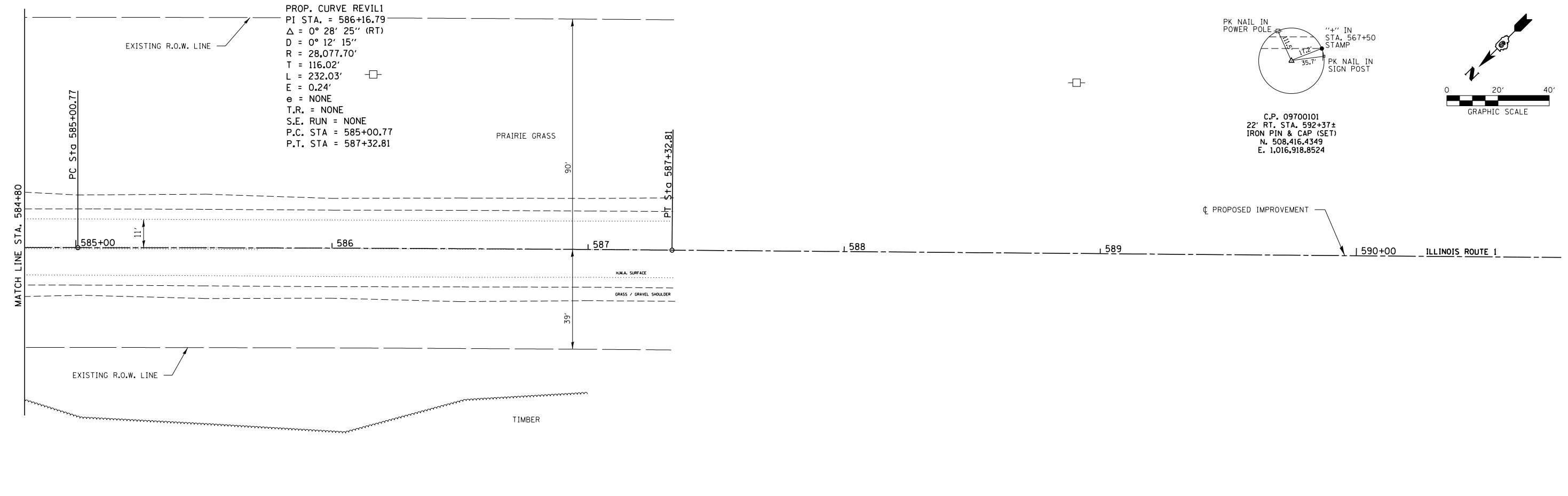
PLAN	SURVEYED	BY	DATE
	PLOTTED		
	GRADES CHECKED		
	STRUCTURE NOTATIONS CHECKED		
	NOTE BOOK NO.		
	CADD FILE NAME		

PROFILE	SURVEYED	BY	DATE
	PLOTTED		
	GRADES CHECKED		
	STRUCTURE NOTATIONS CHECKED		
	NOTE BOOK NO.		
	CADD FILE NAME		

PROP. CURVE REVL1
 PI STA. = 586+16.79
 $\Delta = 0^\circ 28' 25''$ (RT)
 $D = 0^\circ 12' 15''$
 $R = 28,077.70'$
 $T = 116.02'$
 $L = 232.03'$
 $E = 0.24'$
 $e = \text{NONE}$
 $T.R. = \text{NONE}$
 $S.E. \text{ RUN} = \text{NONE}$
 $P.C. \text{ STA} = 585+00.77$
 $P.T. \text{ STA} = 587+32.81$



C.P. 09700101
 22' RT, STA. 592+37±
 IRON PIN & CAP (SET)
 N. 508,416.4349
 E. 1,016,918.8524



FILE NAME = D978103-sht-plnprof2.dgn	USER NAME = *USER*	DESIGNED - L.F.S.	REVISED -
HAMPTON, LENZINI AND RENWICK, INC. 3088 STEVENSON DRIVE, SUITE 201 SPRINGFIELD, ILLINOIS 62703 ILLINOIS PROFESSIONAL DESIGN FIRM LS / PE / SE CORP. 184.000959	PLOT SCALE = *SCALE*	DRAWN - T.W.K.	REVISED -
	PLOT DATE = 5/8/2013	CHECKED - J.W.F.	REVISED -
		DATE - 04/26/13	REVISED -

STATE OF ILLINOIS
 DEPARTMENT OF TRANSPORTATION

PLAN & PROFILE
 ILLINOIS ROUTE 1

SCALE: 20H:5V SHEET NO. 2 OF 2 SHEETS STA. 584+80 TO STA. 587+00

F.A.P.	SECTION	COUNTY	TOTAL SHEETS	SHEET NO.
332	2B-1	WHITE	52	14
CONTRACT NO. 78103				
FED. ROAD DIST. NO. ILLINOIS FED. AID PROJECT				