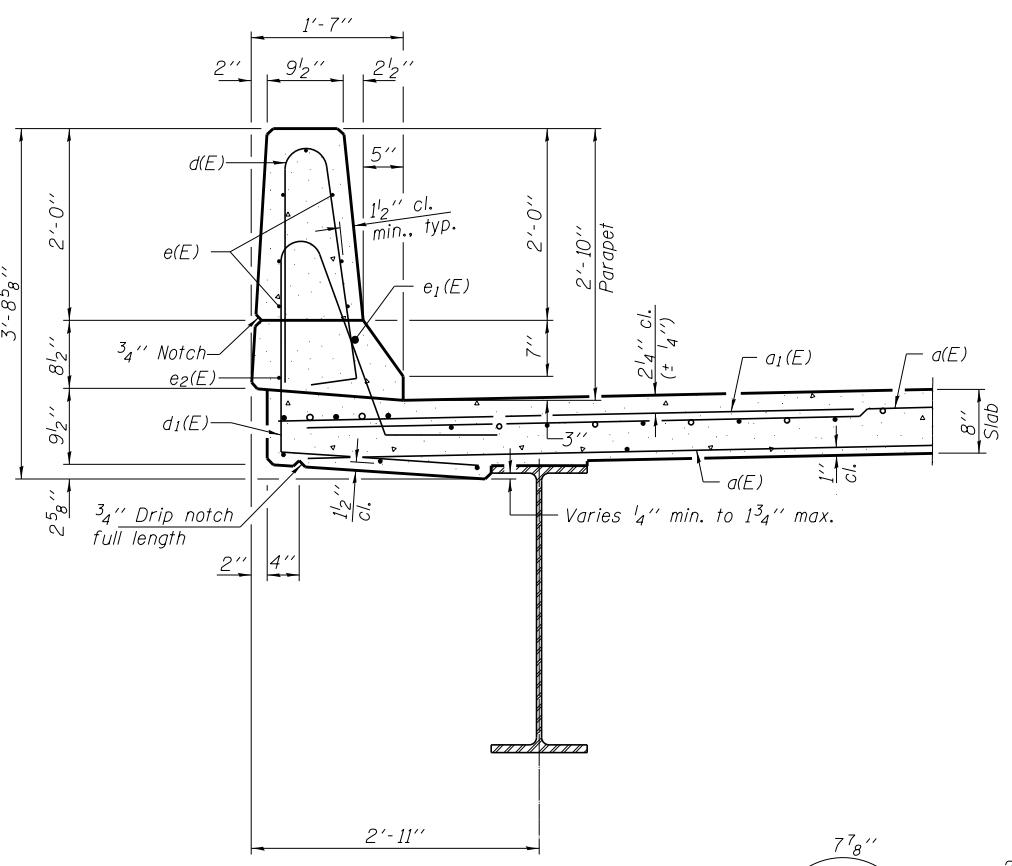


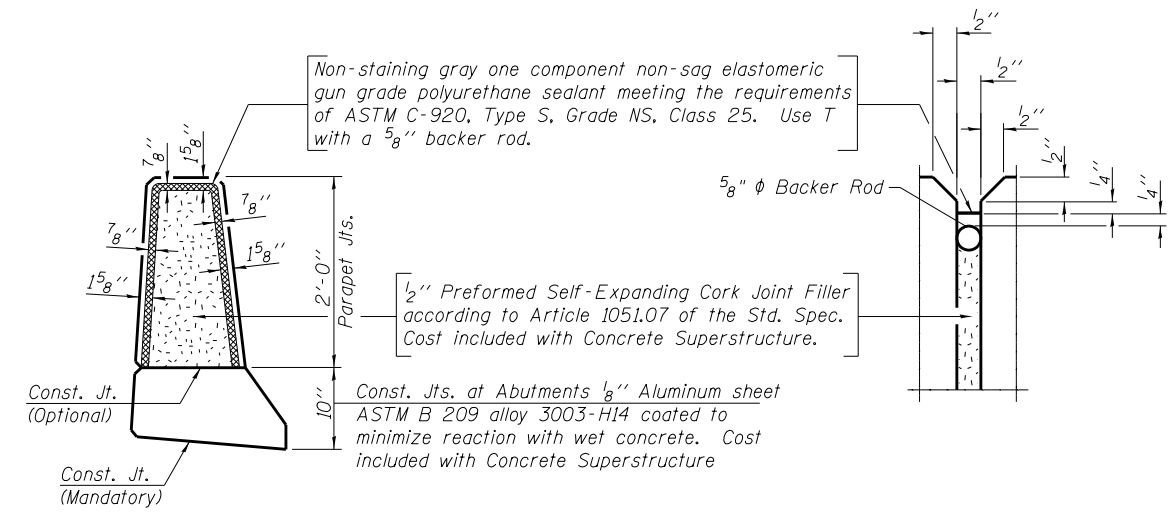
**INSIDE ELEVATION OF PARAPET**

**MIN. BAR LAP**

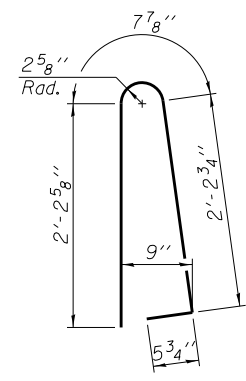
(Parapet)  
 #4 bars = 2'-0"  
 #8 bars = 5'-2"



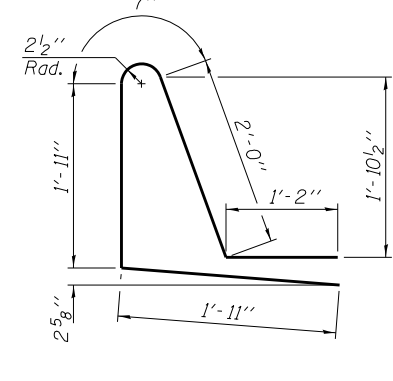
**SECTION THRU PARAPET**



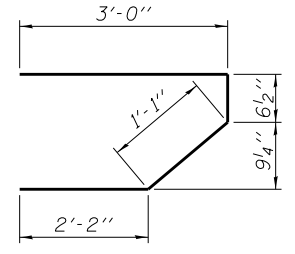
**PARAPET JOINT DETAILS**



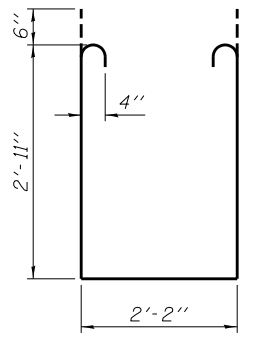
**BAR d(E)**



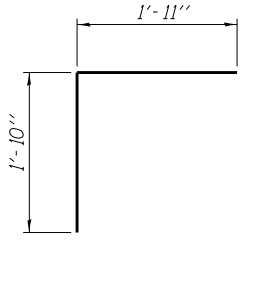
**BAR d1(E)**



**BAR s(E)**



**BAR s1(E)**



**BAR v(E)**

**SUPERSTRUCTURE BILL OF MATERIAL**

BAR	NO.	SIZE	LENGTH	SHAPE
a(E)	384	#5	19'-1"	—
a1(E)	238	#6	6'-6"	—
b(E)	84	#5	31'-2"	—
b1(E)	96	#5	21'-8"	—
d(E)	132	#5	5'-7"	U
d1(E)	132	#5	7'-7"	U
e(E)	42	#4	19'-8"	—
e1(E)	4	#8	32'-5"	—
e2(E)	4	#4	30'-10"	—
m(E)	20	#6	19'-3"	—
m1(E)	24	#6	8'-9"	—
m2(E)	8	#6	6'-3"	—
m3(E)	8	#6	2'-7"	—
s(E)	80	#5	6'-10"	⌌
s1(E)	72	#4	9'-0"	⌌
v(E)	72	#5	3'-9"	⌌

Concrete Superstructures	Cu. Yd.	95.7
Reinforcement Bars, Epoxy Coated	Pound	19,940
Bar Splicers	Each	280
Bridge Deck Grooving	Sq. Yd.	227
Protective Coat	Sq. Yd.	290

Bars indicated thus 1x2-#4 etc. indicates 1 line of bars with 2 lengths per line.

FILE NAME = 0978103-sht-bridge.dgn	USER NAME = #USER#	DESIGNED - A.S.L.	REVISED -
HAMPTON, LENZINI AND RENWICK, INC.		CHECKED - J.R.T.	REVISED -
3035 STEVENSON DRIVE, SUITE 201		DRAWN - D.A.B.	REVISED -
SPRINGFIELD, ILLINOIS 62703		CHECKED - M.D.C.	REVISED -
ILLINOIS PROFESSIONAL DESIGN FIRM			
LS / PE / SE CORP. 184.000959			

**STATE OF ILLINOIS  
 DEPARTMENT OF TRANSPORTATION**

**SUPERSTRUCTURE DETAILS  
 STRUCTURE NO. 097-0074**

SHEET NO. 10 OF 19 SHEETS

FAP	SECTION	COUNTY	TOTAL SHEETS	SHEET NO.
332	2B-1	WHITE	52	34
IL 1 OVER FLANDERS CREEK			CONTRACT NO. 78103	

ILLINOIS FED. AID PROJECT