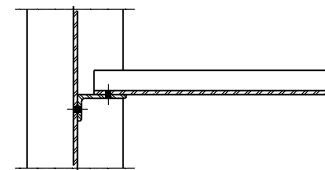
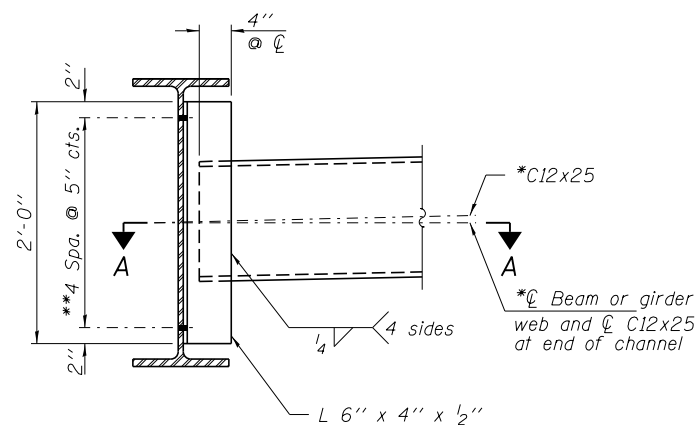


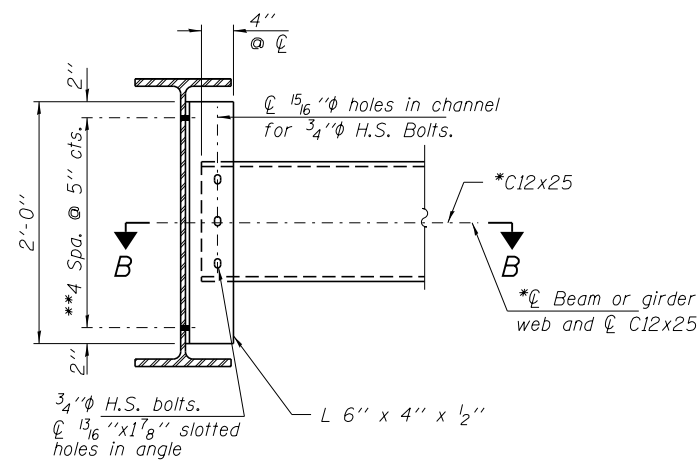
SECTION A-A



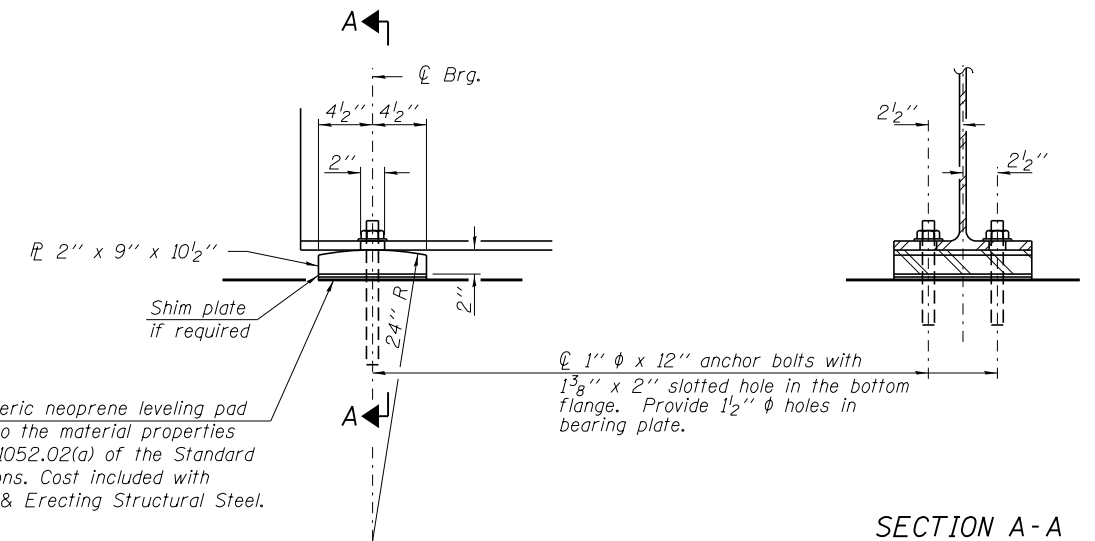
SECTION B-B



INTERIOR DIAPHRAGM D
(12 Required)



INTERIOR DIAPHRAGM D₁
(3 Required)



ELEVATION

FIXED BEARING AT ABUTMENT
(12 required)

SECTION A-A

Notes:

Anchor bolts shall be ASTM F1554 all-thread (or an Engineer-approved alternate material) of the grade(s) and diameter(s) specified. ASTM A307 Grade C anchor bolts may be used in lieu of ASTM F1554 Grade 36 (Fy = 36 ksi). The corresponding specified grade of AASHTO M314 anchor bolts may be used in lieu of ASTM F1554.

Anchor bolts at fixed bearings may be either cast in place or installed in holes drilled after the supported member is in place.

Note:

Two hardened washers required for each set of oversized holes.

*Alternate channels (C12x30) are permitted to facilitate material acquisition. Calculated weight of structural steel is based on the lighter section. The alternate, if utilized, shall be provided at no additional cost to the Department.

**3/4" H.S. bolts, 1 5/16" holes

Bolts in slots shall be finger tight until the second stage pour is complete and fully tightened after completion of the deck pour for Stage II Construction. Position slots so bolts start at one end with no concrete load and finish near the opposite end under deck load, allowing maximum displacement without laterally stressing main members.

FILE NAME = D978103-sht-bridge.dgn	USER NAME = *USER*	DESIGNED - A.S.L.	REVISED -	STATE OF ILLINOIS DEPARTMENT OF TRANSPORTATION	STRUCTURAL STEEL DETAILS STRUCTURE NO. 097-0074	FAP	SECTION	COUNTY	TOTAL SHEETS	SHEET NO.
HAMPTON, LENZINI AND RENWICK, INC. 3085 STEVENSON DRIVE, SUITE 201 SPRINGFIELD, ILLINOIS 62703 ILLINOIS PROFESSIONAL DESIGN FIRM LS / PE / SE CORP. 184.000959	PLOT SCALE = *SCALE*	CHECKED - J.R.T.	REVISED -			332	2B-1	WHITE	52	39
	PLOT DATE = 5/8/2013	DRAWN - D.A.B.	REVISED -			IL 1 OVER FLANDERS CREEK		CONTRACT NO. 78103		
		CHECKED - M.D.C.	REVISED -			SHEET NO. 15 OF 19 SHEETS		ILLINOIS FED. AID PROJECT		