

STATE OF ILLINOIS
DEPARTMENT OF TRANSPORTATION

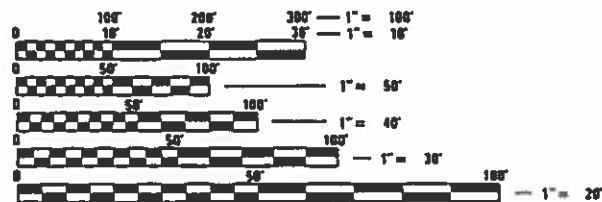
ROUTE	SECTION	COUNTY	TOTAL SHEETS	SHEET NO.
VARIOUS	D-7 HT PVMNT MRK RPR 20-19	VARIOUS	12	1
		ILLINOIS	CONTRACT NO. 46531	

D-7

FOR INDEX OF SHEETS, SEE SHEET NO. 2

PROPOSED HIGHWAY PLANS

VARIOUS ROUTE
SECTION D-7 HT PVMNT MRK RPR 20-19
HIGH TYPE PAVEMENT MARKING
VARIOUS COUNTIES
M-60-012-20



FULL SIZE PLANS HAVE BEEN PREPARED USING STANDARD ENGINEERING SCALES. REDUCED SIZED PLANS WILL NOT CONFORM TO STANDARD SCALES. IN MAKING MEASUREMENTS ON REDUCED PLANS, THE ABOVE SCALES MAY BE USED.

J.U.L.I.E.
JOINT UTILITY LOCATION INFORMATION FOR EXCAVATORS
1-800-892-0123
OR 811

PROJECT ENGINEER DEWAYNE SEACHRIST
PROJECT MANAGER ROBERT GREUEL

CONTRACT NO. 46531

STATE OF ILLINOIS
DEPARTMENT OF TRANSPORTATION

SUBMITTED *July 25, 2019*

John P. M... REGIONAL ENGINEER

August 20, 2019

Paul P. Ch... ENGINEER OF DESIGN AND ENVIRONMENT

August 20, 2019

Paul P. Ch... DIRECTOR OF HIGHWAYS PROJECT IMPLEMENTATION

PRINTED BY THE AUTHORITY
OF THE STATE OF ILLINOIS

INDEX OF SHEETS

- 1 COVER SHEET
- 2 INDEX AND STANDARDS
- 3 - 4 SUMMARY OF QUANTITIES
- 5 - 6 EXAMPLE OF WORK SHEETS
- 7 -12 DISTRICT 7 DETAIL NO. 78000001 & 78000002

STANDARDS

- 701006-05 OFF-ROAD OPERATIONS 2L, 2W, 15' (4.5 m) TO 24" (600 mm) FROM PAVEMENT EDGE
- 701011-04 OFF-ROAD MOVING OPERATIONS, 2L, 2W, DAY ONLY
- 701101-05 OFF-ROAD OPERATIONS, MULTILANE, 15' (4.5 m) TO 24" (600 mm) FROM PAVEMENT EDGE
- 701106-02 OFF-ROAD OPERATIONS, MULTILANE, MORE THAN 15' (4.5m) AWAY
- 701201-05 LANE CLOSER, 2L, 2W, DAY ONLY, FOR SPEEDS \geq 45 MPH
- 701301-04 LANE CLOSER, 2L, 2W, SHORT TIME OPERATIONS
- 701311-03 LANE CLOSURE 2L, 2W MOVING OPERATIONS - DAY ONLY
- 701400-09 APPROACH TO LANE CLOSURE, FREEWAY/EXPRESSWAY
- 701401-12 LANE CLOSURE, FREEWAY/EXPRESSWAY
- 701406-12 LANE CLOSURE, FREEWAY/EXPRESSWAY, DAY OPERATIONS ONLY
- 701411-09 LANE CLOSURE, MULTILANE, AT ENTRANCE OR EXIT RAMP FOR SPEEDS \geq 45 MPH
- 701426-09 LANE CLOSURE, MULTILANE INTERMITTENT OR MOVING OPERATION, FOR SPEEDS \geq 45 MPH
- 701427-05 LANE CLOSURE, MULTILANE INTERMITTENT OR MOVING OPERATION, FOR SPEEDS \leq 40 MPH
- 701428-01 TRAFFIC CONTROL, SETUP AND REMOVAL, FREEWAY / EXPRESSWAY
- 701456-05 PARTIAL EXIT RAMP CLOSURE FREEWAY / EXPRESSWAY
- 701501-06 URBIN LANE CLOSURE, 2L,2W, UNDIVIDED
- 701502-09 URBIN LANE CLOSURE, 2L, 2W, WITH BIDIRECTIONAL LEFT TURN LANE
- 701601-09 URBIN LANE CLOSURE, MULTILANE, 1W OR 2W WITH NONTRAVERSABLE MEDIAN
- 701602-10 URBIN LANE CLOSURE, MULTILANE, 2W WITH BIDIRECTIONAL LEFT TURN LANE
- 701606-10 URBIN SINGLE LANE CLOSURE, MULTILANE, 2W WITH MOUNTABLE MEDIAN
- 701701-10 URBIN LANE CLOSURE, MULTILANE INTERSECTION
- 701901-08 TRAFFIC CONTROL DEVICES

REV. - MS

MODEL: Default
 FILE NAME: D:\Volume1\Documents\DOT Office\Projects\46531\CD\DetailTraffic\DT-46531.dwg
 PLOT DATE: 6/24/2019

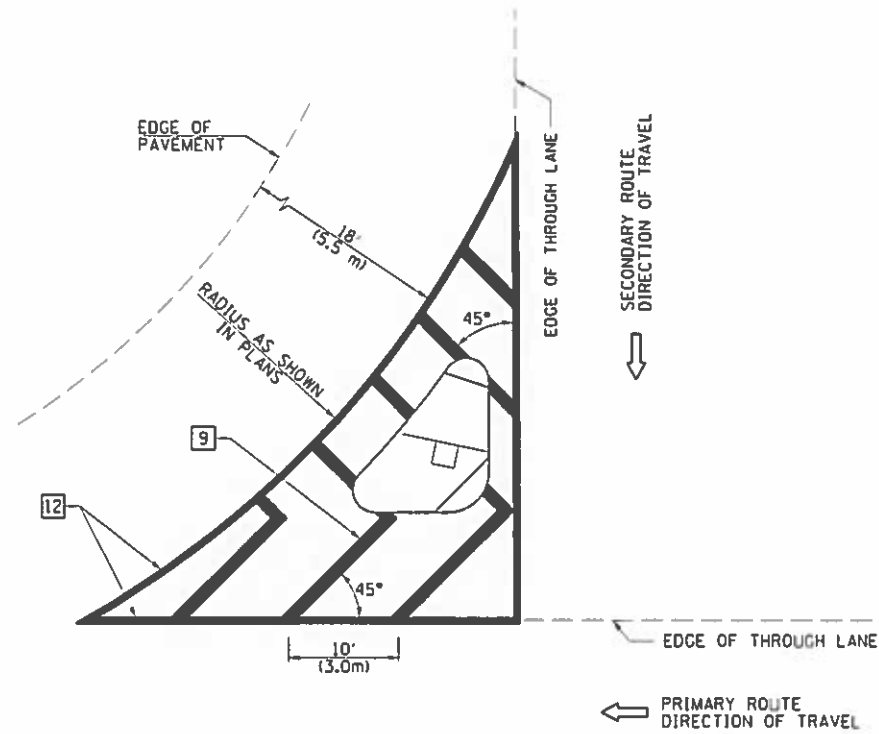
USER NAME = Group1	DESIGNED	REVISED
	DRAWN	REVISED
PLOT SCALE = 100.0000 / in.	CHECKED	REVISED
PLOT DATE = 6/24/2019	DATE	REVISED

**STATE OF ILLINOIS
DEPARTMENT OF TRANSPORTATION**

INDEX OF SHEETS STANDARDS			
SCALE:	SHEET	OF SHEETS	STA. TO STA.

ROUTE	SECTION	COUNTY	TOTAL SHEETS	SHEET NO.
VARIOUS	D-7 HT PVMNT MKK RPR 20-19	VARIOUS	12	2
CONTRACT NO. 46531				
ILLINOIS FED. AID PROJECT				

ISLAND

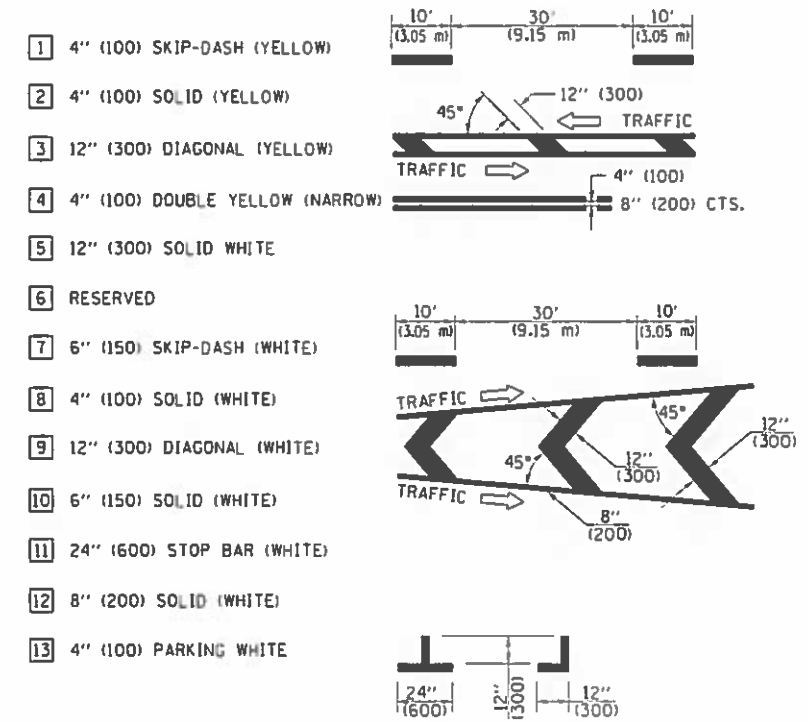


GENERAL NOTES

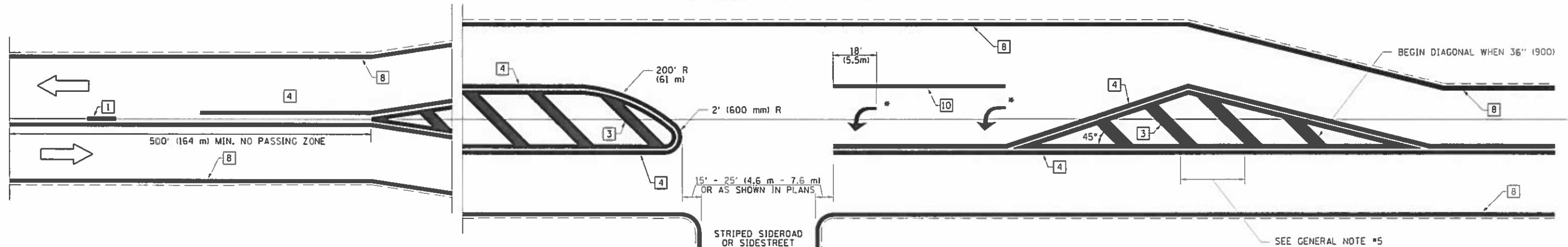
1. RAISED AND CORRUGATED MEDIANS SHALL BE OUTLINED WITH [2] IF PRESENT.
2. SOME OF THE INFORMATION INCLUDED WITH THIS DETAIL MAY NOT BE APPLICABLE TO THIS IMPROVEMENT.
3. PAVEMENT MARKINGS ARE TO BE EXTENDED THROUGH OMISSIONS WHEN APPLICABLE.
4. FINAL PAVEMENT MARKINGS SHALL BE IN PLACE PRIOR TO PLACING ANY RAISED REFLECTIVE PAVEMENT MARKERS.
5. THE FOLLOWING CRITERIA SHALL BE USED FOR SELECTING THE DIAGONAL PAVEMENT MARKING SPACING:

< 30 MPH (< 50 km/h)	15' (4.5 m)
30-45 MPH (50-75 km/h)	20' (6.0 m)
> 45 MPH (> 75 km/h)	30' (9.0 m)

PAVEMENT MARKING LEGEND



RURAL LEFT TURN STRIPING



* PLACE AN ARROW 18' (5.5 m) BACK FROM STOP BAR. PLACE ANOTHER ARROW EVEN WITH THE BEGINNING OF THE SOLID WHITE LINE. SPACE ADDITIONAL ARROWS EVENLY UP TO 80' (24.4 m) MAXIMUM SPACING. USE MINIMUM OF 2 ARROWS.

NOT TO SCALE
Note: All dimensions are in INCHES (millimeters) unless otherwise shown.

DISTRICT 7 DETAIL NO. 78000001

USER NAME = Grouper	DESIGNED -	REVISED -
PLOT SCALE = 100 0000 ' / in	DRAWN -	REVISED -
PLOT DATE = 6/27/2019	CHECKED -	REVISED -
	DATE -	REVISED -

**STATE OF ILLINOIS
DEPARTMENT OF TRANSPORTATION**

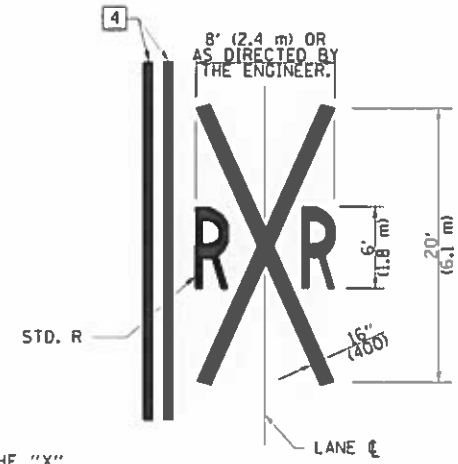
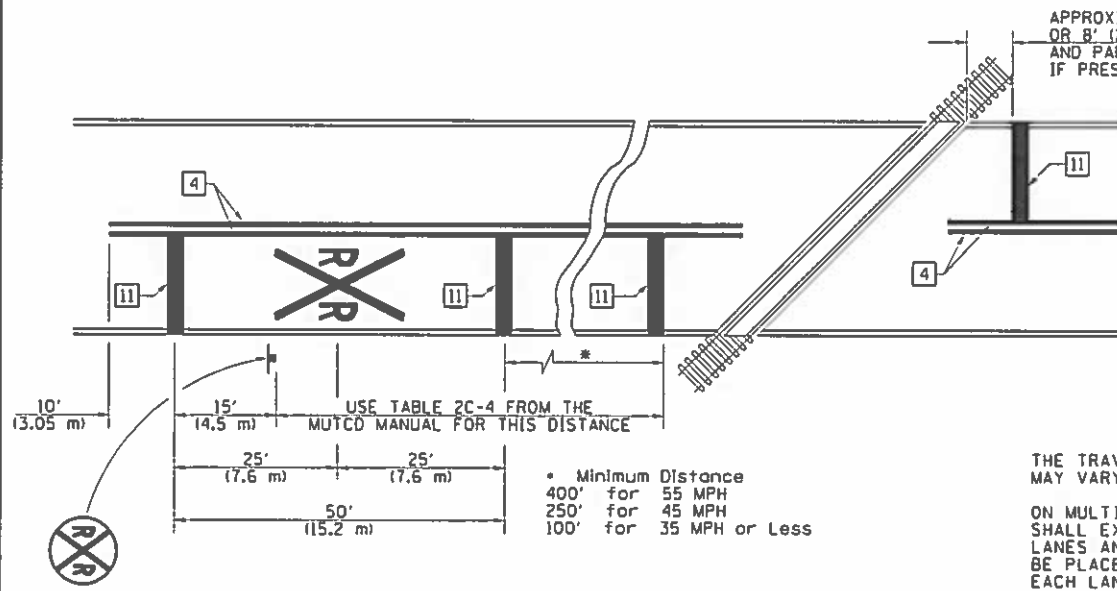
**PAVEMENT MARKING AND RAISED REFLECTIVE PAVEMENT MARKERS
(RURAL & URBAN APPLICATIONS)**

SCALE _____ SHEET 3 OF 4 SHEETS STA _____ TO STA _____

FA RTE	SECTION	COUNTY	TOTAL SHEETS	SHEET NO
VARIOUS	D-7 HT PVMT MRK APR 20 19	VARIOUS	12	9
			CONTRACT NO 46531	
ILLINOIS				

MODIFI: Per/aut
 FILE: H:\LANE - 000\lanes\gov\HYPOD\Documents\DDT - 07\itk\es\District 7\Project\46531\46531\LANE\Detail.dgn

PAVEMENT MARKINGS AT RAILROAD-HIGHWAY GRADE CROSSING



NOTES

THE TRAVERSE SPREAD OF THE "X" MAY VARY ACCORDING TO LANE WIDTH.

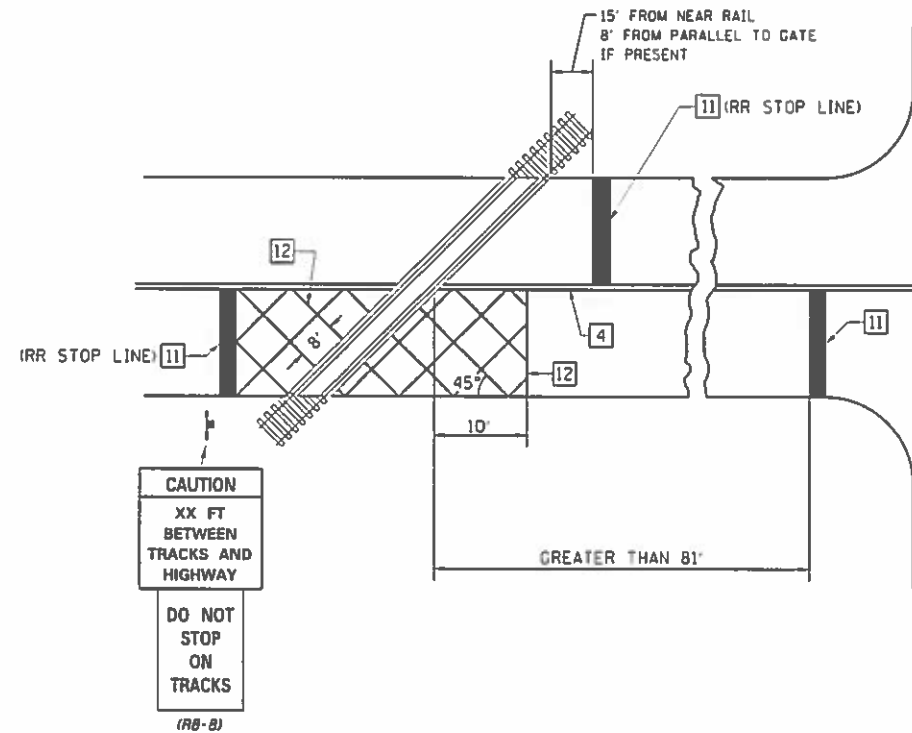
ON MULTI-LANE ROADS, THE STOP LINES SHALL EXTEND ACROSS ALL APPROACH LANES AND SEPARATE RXR SYMBOLS SHALL BE PLACED ADJACENT TO EACH OTHER IN EACH LANE.

WHEN THE PAVEMENT MARKING SYMBOL IS USED, A PORTION OF THE SYMBOL SHOULD BE LOCATED DIRECTLY ADJACENT TO THE ADVANCE WARNING SIGN (W10-1) AS PLACED BY TABLE 11-1, CONDITION B OF THE MUTCD.

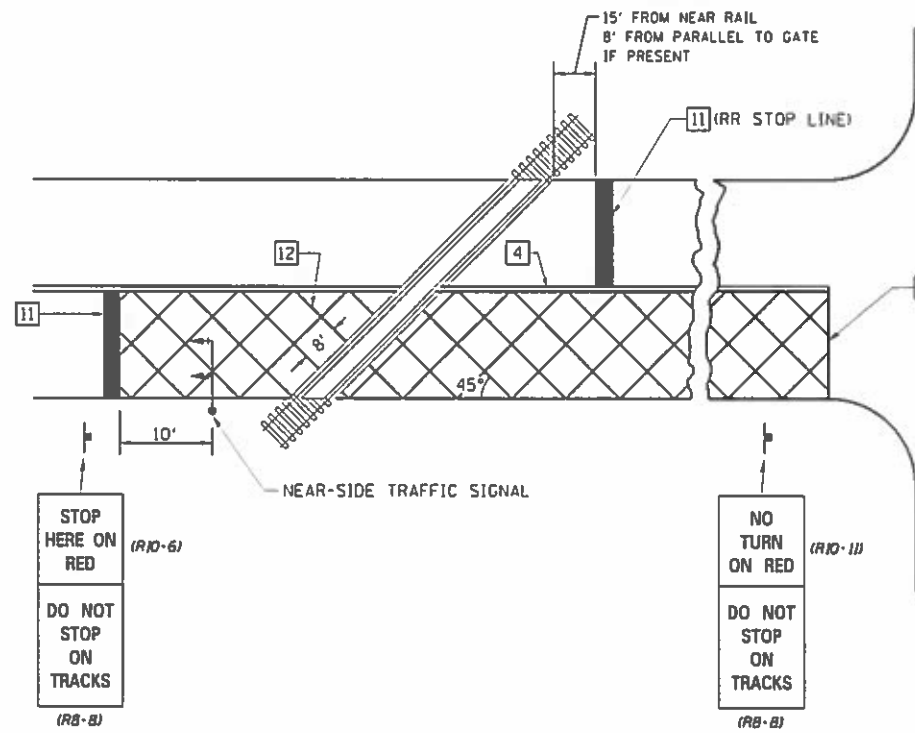
PAVEMENT MARKING LEGEND

- 1 4" (100) SKIP-DASH (YELLOW)
 - 2 4" (100) SOLID (YELLOW)
 - 3 12" (300) DIAGONAL (YELLOW)
 - 4 4" (100) DOUBLE YELLOW (NARROW)
 - 5 12" (300) SOLID WHITE
 - 6 RESERVED
 - 7 6" (150) SKIP-DASH (WHITE)
 - 8 4" (100) SOLID (WHITE)
 - 9 12" (300) DIAGONAL (WHITE)
 - 10 6" (150) SOLID (WHITE)
 - 11 24" (600) STOP BAR (WHITE)
 - 12 8" (200) SOLID (WHITE)
 - 13 4" (100) PARKING WHITE
-

RAILROAD CROSSING WITH INTERCONNECT ONLY



RAILROAD CROSSING WITH INTERCONNECT AND PRE-SIGNALS



GENERAL NOTES

1. SUPPLEMENTAL PAVEMENT MARKINGS TO BE INSTALLED ONLY ON APPROACHES TO INTERSECTIONS CONTROLLED BY TRAFFIC SIGNALS WHICH ARE INTERCONNECTED WITH THE RAILROAD WARNING SIGNALS.
2. EXTEND PAVEMENT MARKINGS TO THE INTERSECTION ONLY WHERE NEAR-SIDE TRAFFIC SIGNALS ARE USED.

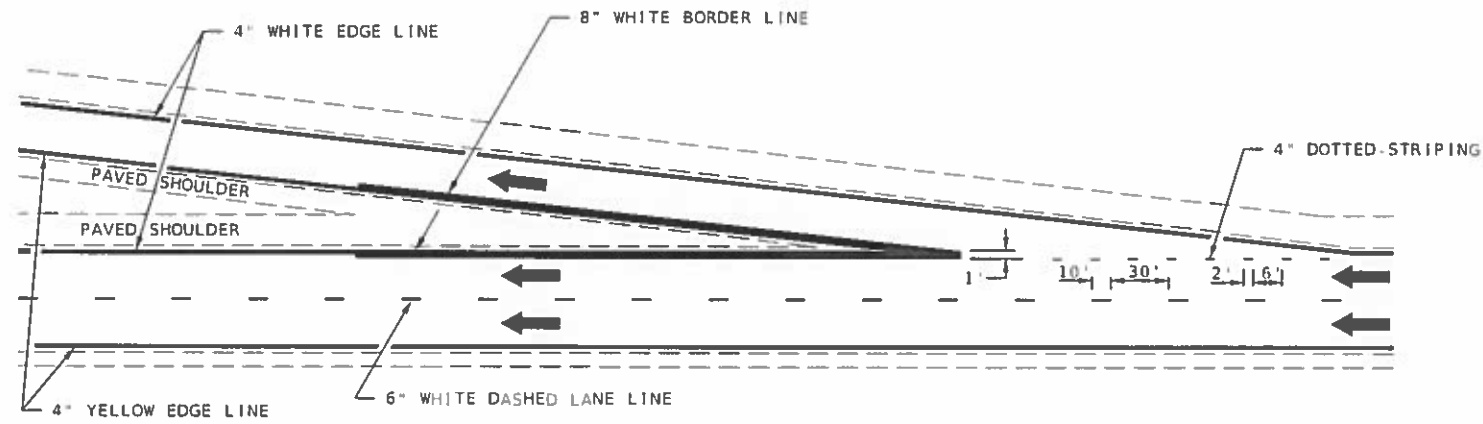
SUPPLEMENTAL PAVEMENT MARKING TREATMENT FOR RAILROAD-HIGHWAY GRADE CROSSING

NOT TO SCALE

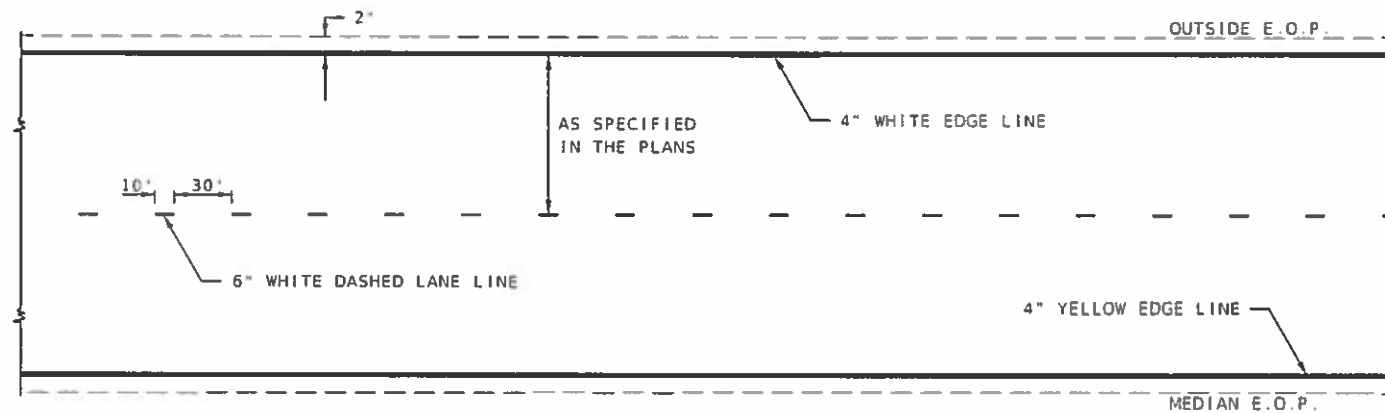
Note: All dimensions are in INCHES (millimeters) unless otherwise shown.

DISTRICT 7 DETAIL NO. 78000001

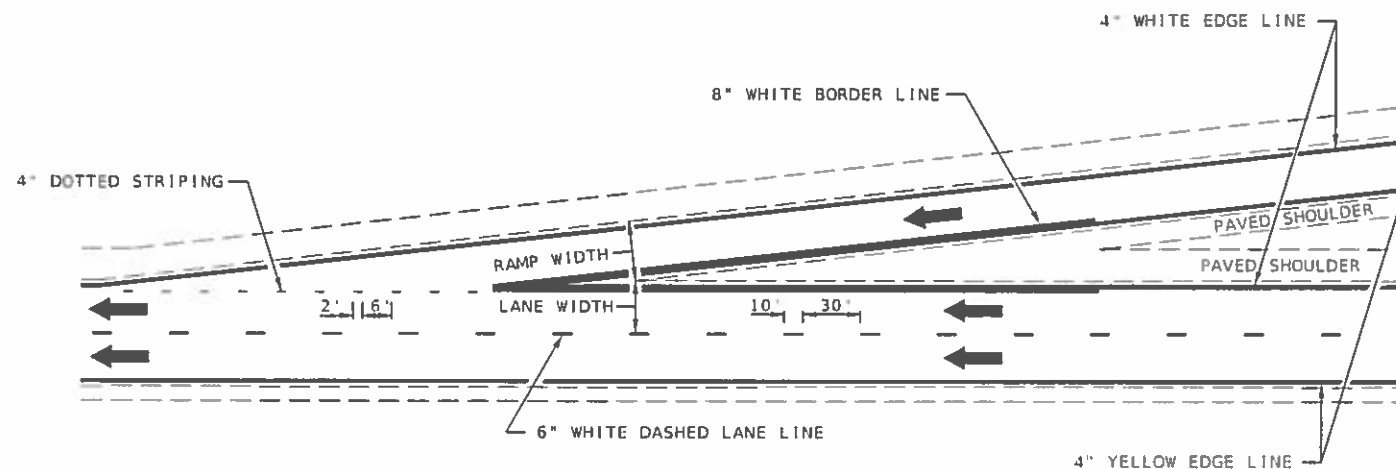
MODEL: D:\pwr FILE NAME: C:\pwr\room\d01\kms\007_PVD001\Document\DOT_Office\Project\78000001\78000001.dwg PROJECT: 46531\VCAD\Drawings\78000001.dwg USER: d01\kms	USER NAME = Grewett	DESIGNED -	REVISED -	STATE OF ILLINOIS DEPARTMENT OF TRANSPORTATION	PAVEMENT MARKING AND RAISED REFLECTIVE PAVEMENT MARKERS (RURAL & URBAN APPLICATIONS)	SECTION	COUNTY	TOTAL SHEETS	SHEET NO	
	PLOT SCALE = 100 0000 in	DRAWN -	REVISED -			VARIOUS	D.7 HT PVMNT MRK APR 29-19	VARIOUS	12	10
	PLOT DATE = 6/27/2019	CHECKED -	REVISED -			CONTRACT NO. 46531				
		DATE -	REVISED -			ILLINOIS				



TYPICAL EXIT RAMP MARKING



TYPICAL CENTERLING & EDGELINE MARKINGS



TYPICAL ENTRANCE RAMP MARKING

NOT TO SCALE

DISTRICT 7 DETAIL NO. 7800002

MODEL: P:\cadd\p\1000000000\1000000000.dwg
 FILE NAME: 1000000000.dwg
 USER: greuetj
 DATE: 6/27/2019

USER NAME = Greuetj	DESIGNED - _____	REVISED - _____
PLLOT SCALE = 100 0000 1/4" = 1'	DRAWN - _____	REVISED - _____
PLLOT DATE = 6/27/2019	CHECKED - _____	REVISED - _____
	DATE - _____	REVISED - _____

STATE OF ILLINOIS
DEPARTMENT OF TRANSPORTATION

TYPICAL APPLICATIONS OF INTERSTATE PAVEMENT MARKING

SCALE: _____ SHEET 1 OF 2 SHEETS STA. _____ TO STA. _____

F.A. RTE.	SECTION	COUNTY	TOTAL SHEETS	SHEET NO.
VARIOUS	D-7 HT PVMHT HRK APR 20-19	VARIOUS	12	11
CONTRACT NO. 46531			ILLINOIS	

