

STATE OF ILLINOIS
DEPARTMENT OF TRANSPORTATION

F.A.P. ATE.	SECTION	COUNTY	TOTAL SHEETS	SHEET NO.
322	(12-1)SLP-1	UNION	12	1
		ILLINOIS	CONTRACT NO. 78739	

FOR INDEX OF SHEETS, SEE SHEET NO. 3
FOR SUMMARY OF QUANTITIES, SEE SHEET NO. 4-5

**PROPOSED
HIGHWAY PLANS**

FAP ROUTE 322 (US 51)
SECTION (12-1)SLP-1
SHOULDER AND SLOPE REPAIR
UNION COUNTY

TRAFFIC DATA

(FAP 322) US 51
TRAFFIC DATA

	(2017)	(2019)	(2039)
PV =	4,800	4,895	5,975
SU =	375	385	465
MU =	225	230	280
ADT =	5,400	5,510	6,720

TOWNSHIPS
ANNA

POSTED SPEED : 55 MPH

J.U.L.L.E.
JOINT UTILITY LOCATION INFORMATION FOR EXCAVATION
1-800-892-0123
OR #11

PROJECT ENGINEER: VALERIE ROLLA
PROJECT DESIGNER: JOHN BRANDON

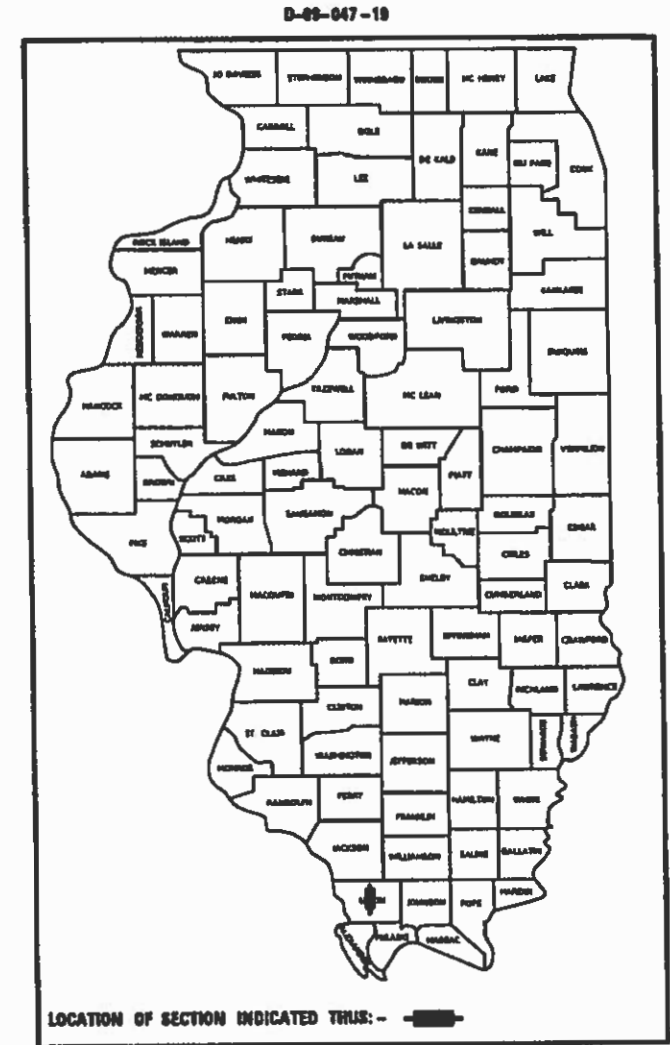
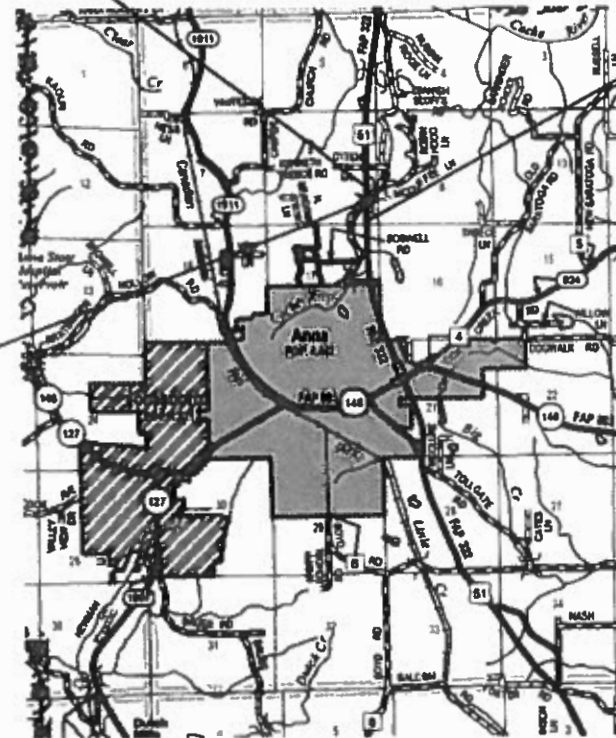
CONTRACT NO. 78739

BEGIN PROJECT
STA. 862 + 00

C-99-078-19

END PROJECT
STA. 867 + 50

SN 091-2002
STA. 864 + 75



STATE OF ILLINOIS
DEPARTMENT OF TRANSPORTATION

SUBMITTED 07-12 2019
[Signature]
REGION FIVE ENGINEER
Aug 16 2019
[Signature]
ENGINEER OF DESIGN AND ENVIRONMENT
Aug 16 2019
[Signature]
DIRECTOR OF HIGHWAYS PROJECT IMPLEMENTATION

PRINTED BY THE AUTHORITY
OF THE STATE OF ILLINOIS

GROSS LENGTH = 550.0 FT. = 0.1 MILES
NET LENGTH = 550.0 FT. = 0.1 MILES

MODEL: Default
FILE NAME: I:\m\mrobinson.gis\Illinois\gov\m\DOT\Documents\DOT - Office\Districts - Projects\12-1\SLP-1\ADDITIONAL\MO-88501918776-Sheet.dwg

Prepared By: Charles Stein
DISTRICT STUDIES & PLANS ENGINEER

Examined By: Nancy Fee
DISTRICT LAND ACQUISITION ENGINEER

Examined By: Car Mike
DISTRICT PROGRAM DEVELOPMENT ENGINEER

Examined By: Kevin Kelly
DISTRICT OPERATIONS ENGINEER

Examined By: [Signature]
DISTRICT PROJECT IMPLEMENTATION ENGINEER

Examined By: _____
DISTRICT CONSTRUCTION ENGINEER

Examined By: [Signature]
DISTRICT MATERIALS ENGINEER

USER NAME = brandonja	DESIGNED -	REVISED -
	DRAWN -	REVISED -
PLOT SCALE = 100.0000' / in.	CHECKED -	REVISED -
PLOT DATE = 7/8/2019	DATE -	REVISED -

**STATE OF ILLINOIS
DEPARTMENT OF TRANSPORTATION**

SIGNATURE SHEET

SCALE:	SHEET	OF	SHEETS	STA.	TO STA.	F.A.P. RTE. 322	SECTION (12-1)SLP-1	COUNTY UNION	TOTAL SHEETS 12	SHEET NO. 2
ILLINOIS FED. AID PROJECT CONTRACT NO. 78739										

INDEX OF SHEETS

<u>SHEET NO</u>	<u>DESCRIPTION</u>
1	COVER SHEET
2	SIGNATURE SHEET
3	INDEX OF SHEETS, GENERAL NOTES AND HIGHWAY STANDARDS
4-6	SUMMARY OF QUANTITIES
7	TYPICAL SECTION
8-9	SCHEDULES
10	PLAN SHEET
11	STEP CONSTRUCTION DETAIL
12	SOIL BORING LOGS

GENERAL NOTES

FACTORS USED FOR ESTIMATING PLAN QUANTITIES ARE AS FOLLOWS AND SHALL NOT BE USED FOR THE BASIS OF FINAL QUANTITIES:

ALL AGGREGATE	2.05 TONS/CU. YD.
RIPRAP	1.50 TONS/CU. YD.
EARTH	110 LBS/CU. FT.
LIME	3% WEIGHT OF EARTH

AT ALL LOCATIONS WHERE THE PROPOSED CONCRETE SHOULDER JOINS AN EXISTING HOT MIX ASPHALT OR CONCRETE PAVEMENT, A FULL DEPTH SAWED JOINT SHALL BE CONSTRUCTED. AT ALL LOCATIONS WHERE THE PROPOSED CONCRETE COMBINATION CONCRETE CURB AND GUTTER JOINS AN EXISTING HOT MIX ASPHALT OR CONCRETE SHOULDER, A FULL DEPTH SAWED JOINT SHALL BE CONSTRUCTED. THE COST OF THESE JOINTS WILL BE INCLUDED IN THE COST OF THE TYPE OF SHOULDER OR CURB BEING CONSTRUCTED.

COMMITMENTS: NONE

HIGHWAY STANDARDS

- 000001-07_STANDARDSYMBOLSABBREVIATIONS&PATTERNS
- 001006_DECIMALOF INCH&FOOT
- 280001-07_TEMPEROSIONCNTRLSYSTEMS
- 420001-09_PAVEMENT JOINTS
- 483001-05_PCCSHLD
- 606001-07_CONCCURBTYP&COMBOCONCC&G
- 630001-12_STEELPLATEBEAMGRDRAIL
- 630301-09_SHLDWIDENFORTYPE1GRDRAILTERMS
- 701001-02_OF FRDOP - 2L2W - 15FTMINFROMEOP
- 701006-05_OF FRDOP - 2L2W - 15FTTOEOP
- 701011-04_OF FRDMOVINGOP - 2L2W - DAYONLY
- 701316-12_LNCLOSURE2L2W - BRIDGEREPAIR45MPHORMORE
- 701901-08_TRAFCNTRLDEVICES
- 725001-01_OBJECTANDTERMINALMARKERS
- 782006_GUARDRAILLANDBARRIERWALLREFLECTORMOUNTINGDETAILS

REV. - MS

MODEL: Default
FILE: M:\MS\151\p1\planroom.dwg
PROJECT: 78739\CADD\DATA\CAD\sheet\0778739-Sheets.dgn

USER NAME = brandonja	DESIGNED -	REVISED -	STATE OF ILLINOIS DEPARTMENT OF TRANSPORTATION	INDEX OF SHEETS, GENERAL NOTES AND HIGHWAY STANDARDS	F.A.P. RTE.	SECTION	COUNTY	TOTAL SHEETS	SHEET NO.
DRAWN -	REVISED -	322			(12-1)SLP-1	UNION	12	3	
PLOT SCALE = 100.0000' / in.	CHECKED -	REVISED -			CONTRACT NO. 78739				
PLOT DATE = 7/12/2019	DATE -	REVISED -			ILLINOIS FED. AID PROJECT				
				SCALE:	SHEET	OF	SHEETS	STA.	TO STA.

SUMMARY OF QUANTITIES

COUNTY:	UNION CO.
ROUTE:	FAP 322 (US 51)
FUNDING:	100% STATE
LOCATION:	RURAL

CODE NUMBER	ITEM DESCRIPTION	UNIT	0006
20200100	EARTH EXCAVATION	CU YD	640
20400800	FURNISHED EXCAVATION	CU YD	423
25000200	SEEDING, CLASS 2	ACRE	0.3
25000350	SEEDING, CLASS 7	ACRE	0.3
25000400	NITROGEN FERTILIZER NUTRIENT	POUND	44
25000500	PHOSPHORUS FERTILIZER NUTRIENT	POUND	24
25000600	POTASSIUM FERTILIZER NUTRIENT	POUND	24
25000700	AGRICULTURAL GROUND LIMESTONE	TON	0.8
28000250	TEMPORARY EROSION CONTROL SEEDING	POUND	46
28000400	PERIMETER EROSION BARRIER	FOOT	340
28001100	TEMPORARY EROSION CONTROL BLANKET	SQ YD	1,112
28200200	FILTER FABRIC	SQ YD	657
30201500	LIME	TON	19

REV. - MS

SUMMARY OF QUANTITIES - CONT

COUNTY:	UNION CO.
ROUTE:	FAP 322 (US 51)
FUNDING:	100% STATE
LOCATION:	RURAL

CODE NUMBER	ITEM DESCRIPTION	UNIT	0006
31100910	SUBBASE GRANULAR MATERIAL, TYPE A 12"	SQ YD	52
42001300	PROTECTIVE COAT	SQ YD	165
44004250	PAVED SHOULDER REMOVAL	SQ YD	165
44213204	TIE BARS 3/4"	EACH	210
44213206	TIE BARS 5/8"	EACH	56
48300500	PORTLAND CEMENT CONCRETE SHOULDERS 10"	SQ YD	52
60603800	COMBINATION CONCRETE CURB AND GUTTER, TYPE B-6.12	FOOT	625
* 63000003	STEEL PLATE BEAM GUARDRAIL, TYPE A, 9 FOOT POSTS	FOOT	675
* 63100167	TRAFFIC BARRIER TERMINAL, TYPE 1 (SPECIAL) TANGENT	EACH	2
63200310	GUARDRAIL REMOVAL	FOOT	750
67100100	MOBILIZATION	L SUM	1
70100100	TRAFFIC CONTROL AND PROTECTION, STANDARD 701316	EACH	1
70106500	TEMPORARY BRIDGE TRAFFIC SIGNALS	EACH	2

* SPECIALTY ITEM

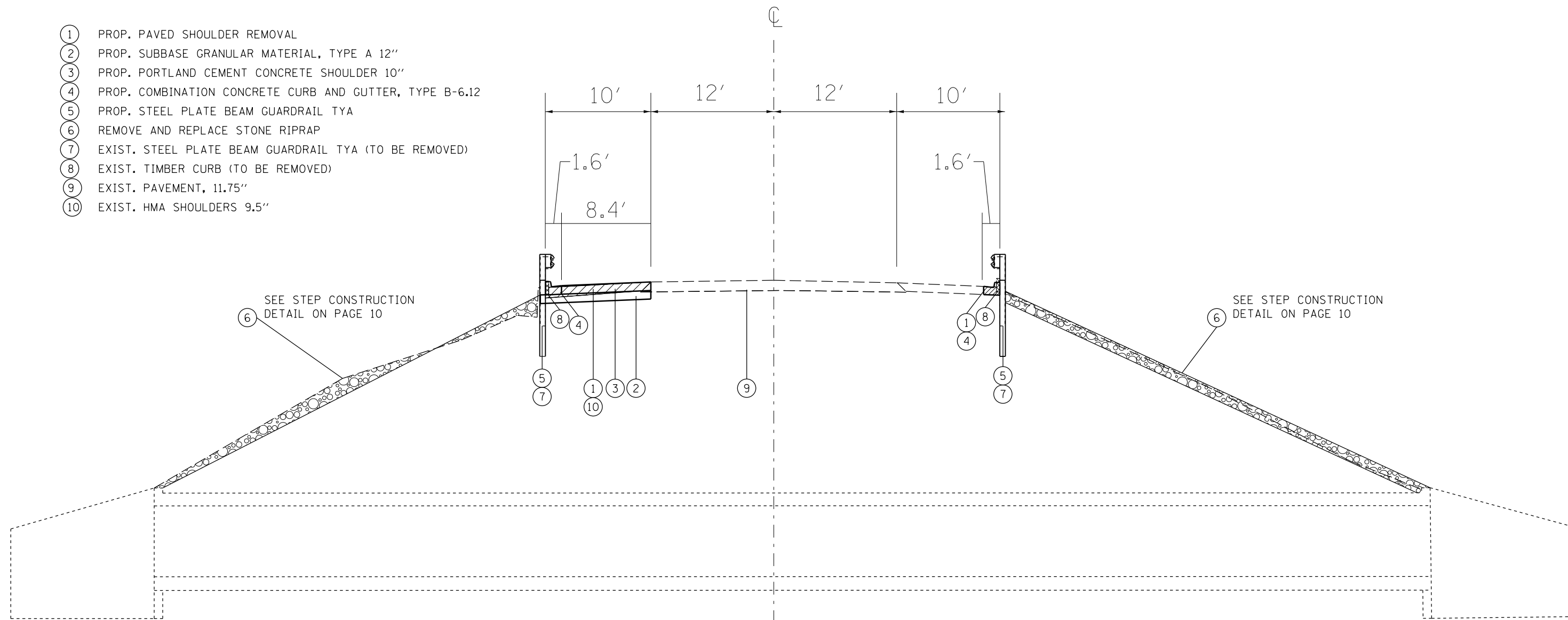
SUMMARY OF QUANTITIES - CONT

COUNTY: UNION CO.
 ROUTE: FAP 322 (US 51)
 FUNDING: 100% STATE
 LOCATION: RURAL

CODE NUMBER	ITEM DESCRIPTION	UNIT	QUANTITY
			0006
70107025	CHANGEABLE MESSAGE SIGN	CAL DA	28
* 72501000	TERMINAL MARKER - DIRECT APPLIED	EACH	2
* 78200006	GUARDRAIL REFLECTORS, TYPE B	EACH	10
X0322329	TIMBER CURB REMOVAL	FOOT	625
X0325592	REMOVE AND REPLACE STONE RIPRAP	CU YD	707
X0326441	STONE BEDDING MATERIAL	TON	226

* SPECIALTY ITEM

- ① PROP. PAVED SHOULDER REMOVAL
- ② PROP. SUBBASE GRANULAR MATERIAL, TYPE A 12"
- ③ PROP. PORTLAND CEMENT CONCRETE SHOULDER 10"
- ④ PROP. COMBINATION CONCRETE CURB AND GUTTER, TYPE B-6.12
- ⑤ PROP. STEEL PLATE BEAM GUARDRAIL TYA
- ⑥ REMOVE AND REPLACE STONE RIPRAP
- ⑦ EXIST. STEEL PLATE BEAM GUARDRAIL TYA (TO BE REMOVED)
- ⑧ EXIST. TIMBER CURB (TO BE REMOVED)
- ⑨ EXIST. PAVEMENT, 11.75"
- ⑩ EXIST. HMA SHOULDERS 9.5"



PORTLAND CEMENT CONCRETE SHOULDERS 10"
 STA: 864+25 LT TO STA: 864+80 LT

TO BE USED: SN 091-2002
 LOOKING UP STATION

STA: 862+27 LT TO STA: 866+02 LT
 STA: 864+33 RT TO STA: 866+83 RT

USER NAME = brandonja PLOT SCALE = 100,0000' / in. PLOT DATE = 7/12/2019	DESIGNED - DRAWN - CHECKED - DATE -	REVISED - REVISED - REVISED - REVISED -	STATE OF ILLINOIS DEPARTMENT OF TRANSPORTATION	TYPICAL SECTION	F.A.P. RTE. 322	SECTION (12-1)SLP-1	COUNTY UNION	TOTAL SHEETS 12	SHEET NO. 7
					SCALE: SHEET OF SHEETS STA. TO STA.		ILLINOIS FED. AID PROJECT		

EARTHWORK SCHEDULE

LOCATION STATION TO STATION	EARTH EXCAVATION	LEFT OR RIGHT	FOR INFORMATION ONLY				FURNISHED EXCAVATION	LIME
			AVERAGE SHRINKAGE FACTOR	EARTH EXCAVATION (ADJUSTED)	EMBANKMENT	EARTHWORK BALANCE		
			%	CU YD	CU YD	WASTE (+) SHORTAGE (-) CU YD		
	CU YD						CU YD	TON
864+02.05 TO 864+87.5	391	LT	17.7	322	515	-193	193	9
866+54 TO 865+29	249	RT	17.8	205	435	-230	230	10
TOTALS :	640						423	19

RIPRAP SCHEDULE

LOCATION STATION TO STATION			LEFT OR RIGHT	FILTER FABRIC	STONE BEDDING MATERIAL	REMOVE AND REPLACE STONE RIPRAP	PERIMETER EROSION BARRIER	COMMENTS
STA.	TO	STA.		SQ YD	TON	CU YD	FOOT	
SN 091-2002								
864+02.5	TO	864+87.5	LT	340	117	364	170	
864+54.	TO	865+29.	RT	317	109	343	170	
TOTAL				657	226	707	340	

SEEDING SCHEDULE

LOCATION STATION TO STATION			LEFT OR RIGHT	SEEDING CL 2	SEEDING CL 7	NITROGEN FERTILIZER NUTRIENT	PHOSPHOROUS FERTILIZER NUTRIENT	POTASSIUM FERTILIZER NUTRIENT	AGRICULTURAL GROUND LIMESTONE	TEMPORARY EROSION CONTROL BLANKET	TEMPORARY EROSION CONTROL SEEDING	COMMENTS
STA.	TO	STA.		ACRE	ACRE	POUND	POUND	POUND	TON	SQ YD	POUND	
SN 091-2002												
863+77.5	TO	864+02.5	LT	0.06	0.06	11	6	6	0.2	278	11	
864+87.5	TO	865+12.5	LT	0.06	0.06	11	6	6	0.2	278	11	
864+29.	TO	864+54.	RT	0.06	0.06	11	6	6	0.2	278	11	
865+29.	TO	865+54.	RT	0.06	0.06	11	6	6	0.2	278	11	
TOTAL				0.3	0.3	44	24	24	0.8	1,112	46	

SHOULDER AND CONCRETE CURB AND GUTTER SCHEDULE

LOCATION STATION TO STATION			LEFT OR RIGHT	PAVED SHOULDER REMOVAL	SUBBASE GRANULAR MATERIAL, TYPE A 12"	PORTLAND CEMENT CONCRETE SHOULDERS 10"	COMBINATION CONCRETE CURB AND GUTTER, TYPE B-6.12	PROTECTIVE COAT	TIE BARS 5/8"	TIE BARS 3/4"	COMMENTS
				SQ YD	SQ YD	SQ YD	FOOT	SQ YD	EACH	EACH	
STA.	TO	STA.									
SN 091-2002											
862+27.	TO	863+87.5	LT	29			160.5	29		54	
863+87.5	TO	863+90.5	LT	1			3	1		2	DEPRESSED CURB FOR OUTLET
863+90.5	TO	864+25	LT	7			34.5	7		12	
864+25.	TO	864+80.	LT	62	52	52	55	62	56	18	
864+80.	TO	866+02.	LT	22			122	22		41	
864+33.	TO	866+83.	RT	44			250	44		84	
TOTAL				165	52	52	625	165	56	210	

GUARDRAIL SCHEDULE

LOCATION STATION TO STATION			LEFT OR RIGHT	TIMBER CURB REMOVAL	GUARDRAIL REMOVAL	TRAFFIC BARRIER TERMINAL TY 1, SPL (TANG)	STEEL PLATE BEAM GUARDRAIL, TYPE A, 9 FOOT POSTS	GUARDRAIL REFLECTOR, TY B	TERMINAL MARKERS DIRECT APPLIED	COMMENTS
				FOOT	FOOT	EACH	FOOT	EACH	EACH	
STA.	TO	STA.								
SN 091-2002										
862+14.5	TO	862+27	LT		12.5		12.5			
862+27.	TO	863+40	LT	113	113		113	1		
863+40.	TO	864+75.	LT	135	135		135	2		
864+75.	TO	866+02.	LT	127	127		127	1		
866+02.	TO	866+14.5	LT		12.5		12.5	1		
866+14.5	TO	866+52.	LT		37.5	1			1	
864+20.5	TO	864+33.	RT		12.5		12.5	1		
864+33.	TO	864+75.	RT	42	42		42			
864+75.	TO	866+52.	RT	177	177		177	3		
866+52.	TO	866+83.	RT	31	31		31			
866+83.	TO	866+95.5	RT		12.5		12.5	1		
866+95.5	TO	867+33.	RT		37.5	1			1	
TOTAL				625	750.0	2	675	10	2	

NOTE: ANY WIDENING NECESSARY TO CONSTRUCT THE TYPE1, SPECIAL (TANGENT) GUARDRAIL TERMINAL SHALL BE INCLUDED IN THE COST OF TRAFFIC BARRIER TERMINAL, TYPE 1 SPECIAL (TANGENT)

USER NAME = brandonja	DESIGNED -	REVISED -	STATE OF ILLINOIS DEPARTMENT OF TRANSPORTATION	SHOULDER AND CONCRETE CURB AND GUTTER AND GUARDRAIL SCHEDULE	F.A.P. RTE. 322	SECTION (12-1)SLP-1	COUNTY UNION	TOTAL SHEETS 12	SHEET NO. 9	
PLOT SCALE = 100,0000' / in.	CHECKED -	REVISED -			SCALE:	SHEET OF SHEETS	STA. TO STA.	CONTRACT NO. 78739		
PLOT DATE = 7/12/2019	DATE -	REVISED -			ILLINOIS FED. AID PROJECT					



EX. ROW

SPANISH BLUFF RD

PERIMETER EROSION BARRIER

TIMBER CURB REMOVAL
PAVED SHOULDER REMOVAL
COMB. CONC. C&G TY B-6.12
LT STA 862+27 TO 866+02

DEPRESSED CURB
LT STA 863+87.5 TO 863+90.5

REMOVE AND REPLACE STONE RIPRAP
EARTH EXCAVATION
FURNISHED EXCAVATION
LIME
LT STA 864+02.5 TO 864+87.5

EX. TRIPLE BOX CULVERT
SN 091-2002 864+75

GUARDRAIL REMOVAL
SPBGR, TYPE A, 9 FOOT POSTS
TBT TY 1, SPL (TANG)
LT STA 862+14.5 TO 866+52
L.O.N. = 862+14.5 TO 866+39.5

US 51

BORING NO. 2-S
STA. 864+44, 17' LT. ζ

865

BORING NO. 1-S
STA. 865+19, 17' RT. ζ

PAVED SHOULDER REMOVAL
SUBBASE GRANULAR MATERIAL, TY. A 12"
PORTLAND CEMENT CONCRETE SHOULDERS 10"
LT STA 864+25 TO 864+80

REMOVE AND REPLACE STONE RIPRAP
EARTH EXCAVATION
FURNISHED EXCAVATION
LIME
RT STA 864+54 TO 865+29

GUARDRAIL REMOVAL
SPBGR, TYPE A, 9 FOOT POSTS
TBT TY 1, SPL (TANG)
RT STA 864+20.5 TO 867+33
L.O.N. = 864+20.5 TO 867+20.5

TIMBER CURB REMOVAL
PAVED SHOULDER REMOVAL
COMB. CONC. C&G TY B-6.12
RT STA 864+33 TO 866+83

PERIMETER EROSION BARRIER

EX. ROW

MODEL: Default
FILE: \\blm\c:\pub\baronm.d\at\illinois.gov\PI\DOT\Documents\DOT_Offices\District 9\Projects\78739\CADD\data\CAD\sheet\0978739_Sheets.dgn

USER NAME = brandonja	DESIGNED -	REVISED -
	DRAWN -	REVISED -
PLOT SCALE = 40,0000' / in.	CHECKED -	REVISED -
PLOT DATE = 7/12/2019	DATE -	REVISED -

**STATE OF ILLINOIS
DEPARTMENT OF TRANSPORTATION**

PLAN SHEET

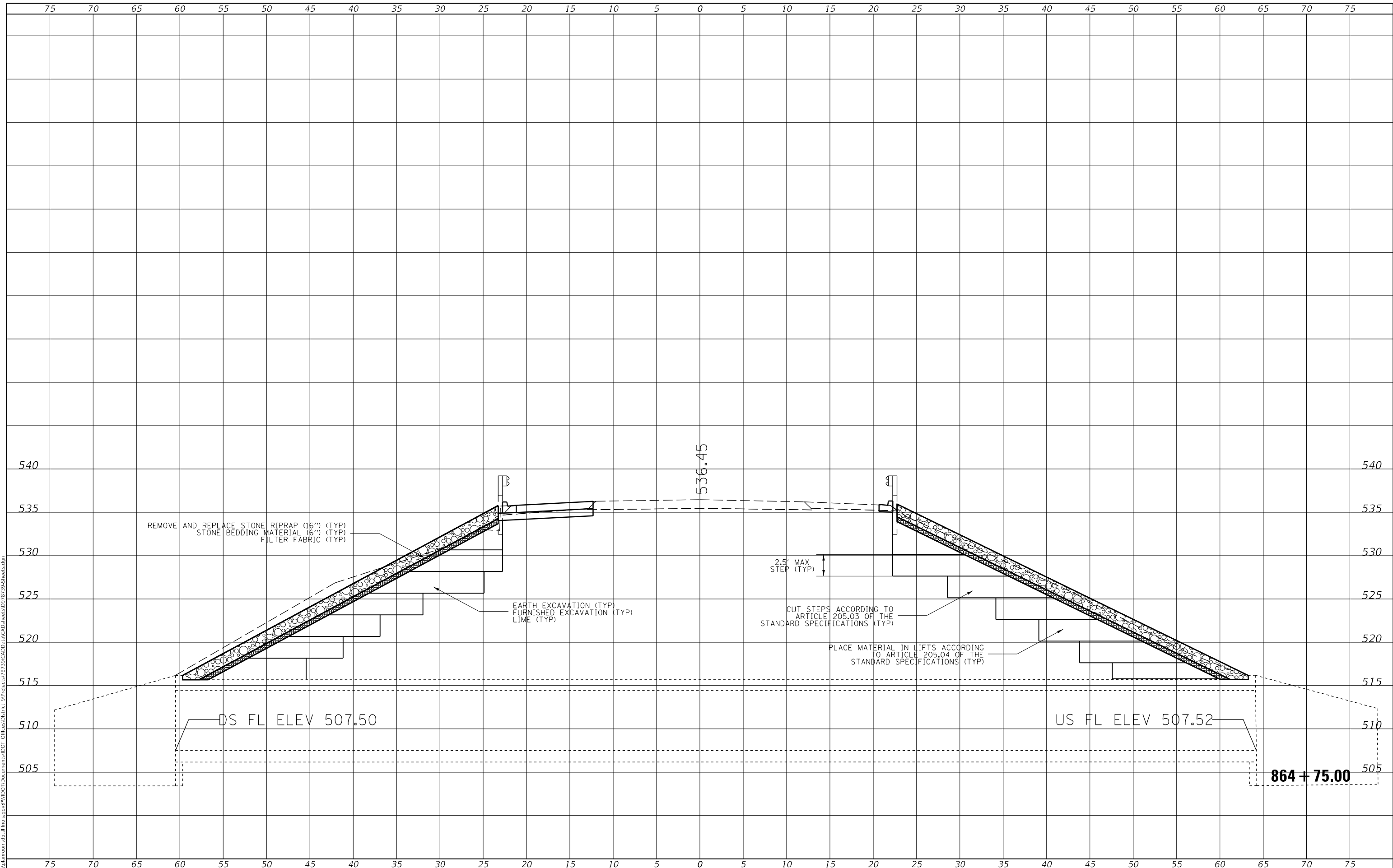
SCALE: SHEET OF SHEETS STA. TO STA.

F.A.P. RTE.	SECTION	COUNTY	TOTAL SHEETS	SHEET NO.
322	(12-1)SLP-1	UNION	11	10
CONTRACT NO. 78739				
ILLINOIS FED. AID PROJECT				

FINAL SURVEY NO.	SURVEYED	DATE
NOTE BOOK	PLOTTED	BY
	TEMPLATE	
	AREAS CHECKED	
	AREAS CHECKED	

ORIGINAL SURVEY NO.	SURVEYED	DATE
NOTE BOOK	PLOTTED	BY
	TEMPLATE	
	AREAS CHECKED	
	AREAS CHECKED	

MODEL: Definit
 FILE NAME: D:\vbl\mcom.d\illinois.gov\PIV\DOT\Documents\DOT_Office\District_9\Projects\78739\CAD\Drawings\78739-Sheets.dgn



USER NAME = brandonja	DESIGNED -	REVISED -
	DRAWN -	REVISED -
PLOT SCALE = 10.0000' / in.	CHECKED -	REVISED -
PLOT DATE = 7/12/2019	DATE -	REVISED -

**STATE OF ILLINOIS
 DEPARTMENT OF TRANSPORTATION**

STEP CONSTRUCTION DETAIL

SCALE: SHEET OF SHEETS STA. TO STA.

F.A.P. RTE. 322	SECTION (12-1)SLP-1	COUNTY UNION	TOTAL SHEETS 12	SHEET NO. 11
ILLINOIS FED. AID PROJECT			CONTRACT NO. 78739	

