

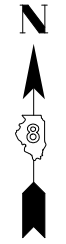
PART OF THE E 1/2 OF SECTION 19 & SW 1/4 OF SECTION 20, T. 1 S., R. 7 W., OF THE 3RD P.M., ST. CLAIR COUNTY, ILLINOIS

SEE LEGENDS, TOPOGRAPHIC STATEMENT, SURVEYORS NOTE(S) AND BASIS OF COORDINATES & BEARINGS STATEMENT ON SHEET 2

| COORDINATE TABLE | | | | |
|--|-----------|-----------|--------------|--------------|
| [PNT #]/DESCRIPTION | STATION | OFFSET | NORTH | EAST |
| [1066]/CONCRETE MONUMENT FOUND | | | 641,989.1710 | 370,854.7370 |
| [1068]1/2" PIPE FOUND | 370+27.41 | 146.45'LT | 641,988.3310 | 370,717.6540 |
| [1077]/COTTON GIN SPIKE FOUND | 370+01.50 | 25.75'RT | 642,013.6079 | 370,596.8158 |
| [1080]1/2" IR W/ALUMINUM ROW CAP FOUND | 370+05.50 | 27.00'RT | 642,009.3254 | 370,544.0915 |
| [1081]1/2" IR W/ALUMINUM ROW CAP FOUND | 370+25.50 | 47.16'RT | 641,989.2216 | 370,524.0316 |
| [1097]1/2" PIPE FOUND | 370+77.00 | 161.22'LT | 641,938.8240 | 370,732.6810 |
| [1105]1/2" IR FOUND | | | 641,789.4780 | 370,717.8560 |

| COORDINATE TABLE | | | | |
|--|-----------|-----------|--------------|--------------|
| [PNT #]/DESCRIPTION | STATION | OFFSET | NORTH | EAST |
| [1106]1/2" IR FOUND | | | 641,855.0800 | 370,733.0180 |
| [1107]1/2" IR W/ALUMINUM ROW CAP FOUND | 370+75.85 | 42.24'LT | 641,939.3470 | 370,613.6939 |
| [1108]1/2" IR W/ALUMINUM ROW CAP FOUND | 370+90.85 | 27.20'LT | 641,924.2671 | 370,598.7361 |
| [1109]1/2" IR W/ALUMINUM ROW CAP FOUND | 372+25.87 | 27.23'LT | 641,789.2470 | 370,599.4727 |
| [1116]1/2" IR FOUND | 370+75.53 | 40.33'RT | 641,939.2279 | 370,531.1243 |
| [5147]SE CORNER LOT 12 | 370+26.88 | 146.65'LT | 641,988.8650 | 370,717.8483 |
| [5164]SE CORNER LOT 9 | 371+05.60 | 25.40'RT | 641,789.1887 | 370,546.9066 |
| [5176]EXISTING ROW | 370+90.52 | 25.40'RT | 641,924.3214 | 370,546.1300 |

| COORDINATE TABLE | | | | |
|---|-----------|-----------|--------------|--------------|
| [PNT #]/DESCRIPTION | STATION | OFFSET | NORTH | EAST |
| [5194]NW CORNER LOT 7 | 370+76.43 | 161.20'LT | 641,939.3929 | 370,732.6540 |
| [7009]IR SET-PROPOSED ROW | 370+75.47 | 55.41'RT | 641,939.2145 | 370,516.0443 |
| [7010]IR SET-PROPOSED ROW | 371+05.60 | 25.40'RT | 641,909.2417 | 370,546.2167 |
| [7011]IR SET-PROPOSED ROW | 370+79.08 | 35.43'RT | 641,935.7023 | 370,536.0474 |
| [7012]PROPOSED ROW | 370+85.60 | 28.94'RT | 641,929.2210 | 370,542.5718 |
| [7014]TEMP. CONST. EASEMENT | 370+81.85 | 30.20'LT | 641,933.2815 | 370,601.6870 |
| [7015]TEMP. CONST. EASEMENT | 370+99.85 | 30.20'LT | 641,915.2817 | 370,601.7852 |
| [7016]TEMP. CONST. EASEMENT | 370+99.85 | 27.20'LT | 641,915.2654 | 370,598.7852 |
| [7008]IR SET-EX ROW & TEMP. CONST. EASEMENT | 370+26.41 | 50.56'LT | 641,988.8279 | 370,621.7594 |
| [5176]EXISTING ROW | 370+90.52 | 25.40'RT | 641,924.3214 | 370,546.1300 |



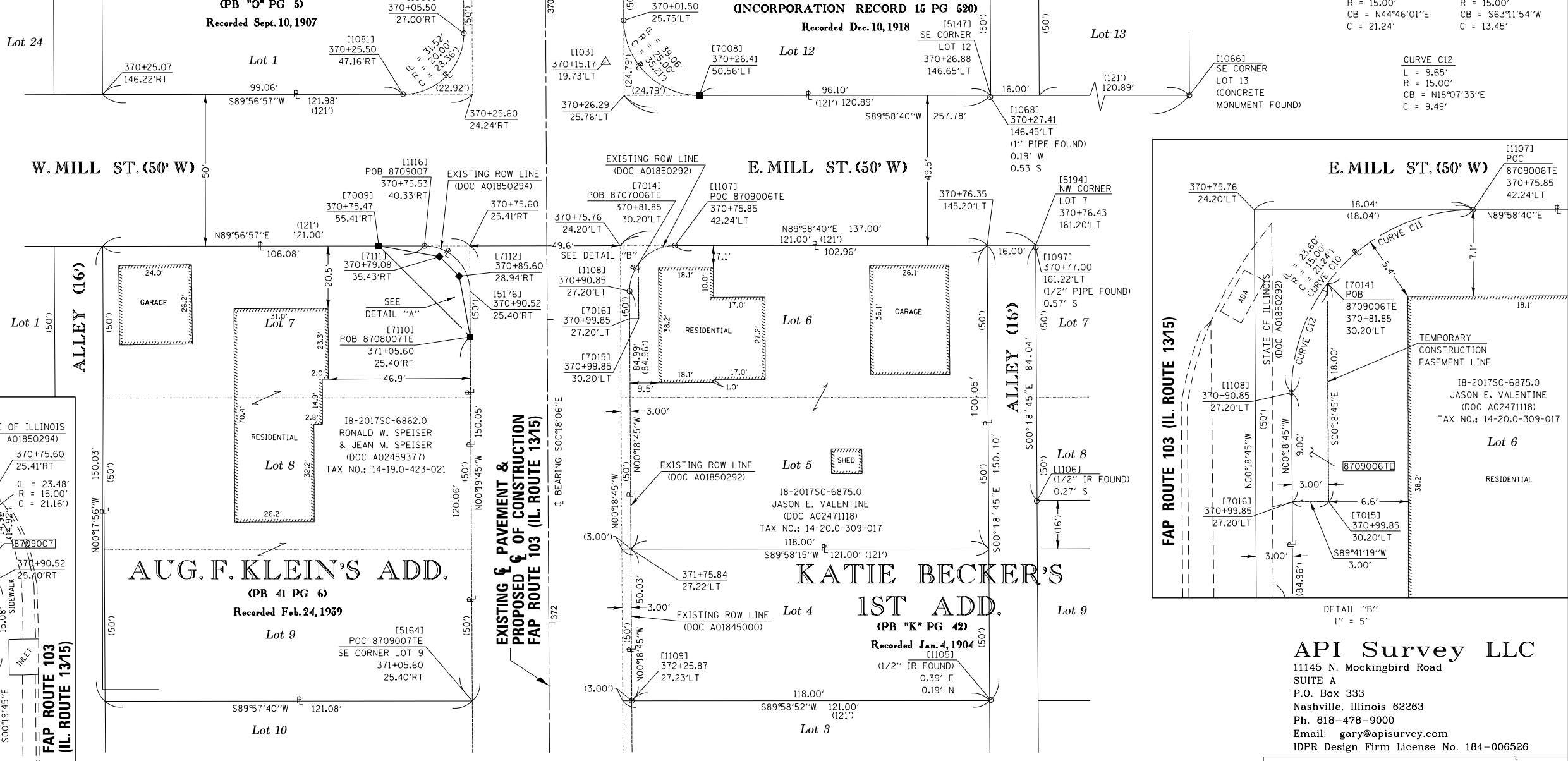
SPACE RESERVED FOR RECORDING OFFICER

SEE COORDINATE TABLE ON SHEET 2 FOR I.D.O.T. PROVIDED CONTROL AND ALIGNMENTS.

SEE SHEET 5

LOUIS KOESTERER'S ADD.

HIGH POINT ADD.

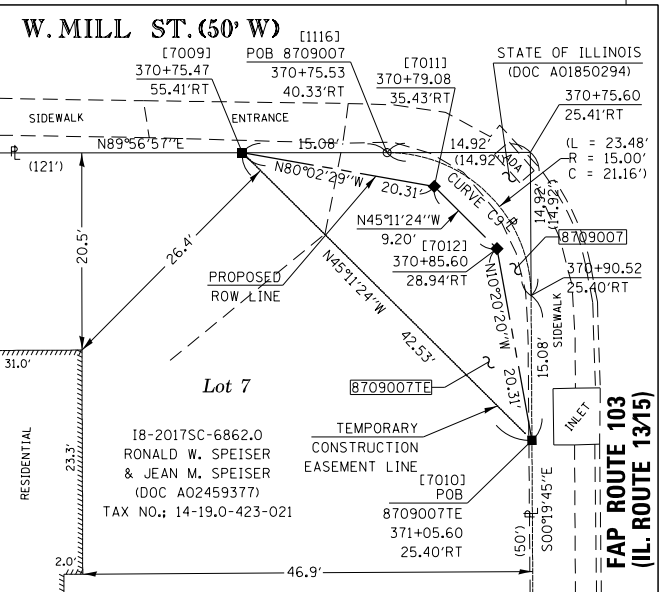


| | |
|------------------|------------------|
| CURVE C10 | CURVE C11 |
| L = 23.60' | L = 13.95' |
| R = 15.00' | R = 15.00' |
| CB = N44°46'01"E | CB = S63°11'54"W |
| C = 21.24' | C = 13.45' |

| |
|------------------|
| CURVE C12 |
| L = 9.65' |
| R = 15.00' |
| CB = N18°07'33"E |
| C = 9.49' |

| |
|-----------------|
| CURVE C9 |
| L = 23.47' |
| R = 15.00' |
| CB = S45°11'24E |
| C = 21.15' |

API Survey LLC
 11145 N. Mockingbird Road
 SUITE A
 P.O. Box 333
 Nashville, Illinois 62263
 Ph. 618-478-9000
 Email: gary@apisurvey.com
 IDPR Design Firm License No. 184-006526



DETAIL "A"
1" = 10'

* SEE TOTAL HOLDING AREA SOURCE TABLE ON SHEET 2

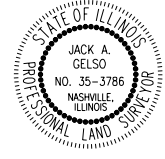
| PARCEL NO. | OWNER | TOTAL HOLDING ACRES | FEE SIMPLE ACQUISITION | | | REMAINDER ACRES | EASEMENTS | | PERMANENT TAX NUMBER AFFECTED | PROPERTY ACQUIRED BY |
|------------|---|---------------------|------------------------|-------|--------|-----------------|-----------|-------------------------------|-------------------------------|----------------------|
| | | | ACRES | SO FT | ACRES | | SO FT | PE = PERMANENT TE = TEMPORARY | | |
| 8709006 | JASON E. VALENTINE TITLE REPORT NO. SC-6875.0 | 0.2699 | | | | TE 0.0010 | TE 45 | SIDEWALK CONSTRUCTION | 14-20.0-309-017 | |
| 8709007 | RONALD W. SPEISER & JEAN M. SPEISER TITLE REPORT NO. SC-6862.0 | 0.4158 | 0.0023 | 102 | 0.4135 | TE 0.0069 | TE 300 | SIDEWALK CONSTRUCTION | 14-19.0-423-021 | |

STATE OF ILLINOIS)
) SS
 COUNTY OF WASHINGTON)

I, JACK A. GELSO, AN ILLINOIS PROFESSIONAL LAND SURVEYOR, CERTIFY THAT I HAVE SURVEYED THE PLAT OF HIGHWAY SHOWN HEREON AND THAT THIS PROFESSIONAL SERVICE CONFORMS TO THE CURRENT ILLINOIS MINIMUM STANDARDS FOR A BOUNDARY SURVEY FOR THE PROPOSED PARCELS TO BE ACQUIRED BY THE STATE OF ILLINOIS, DEPARTMENT OF TRANSPORTATION, SHOWN HEREON.

DATED 12/6/2018

JACK A. GELSO, PLS NO. 3786
 LICENSE EXPIRATION DATE: 11/30/2020



| | |
|---|--------------|
| COMPLETION DATE OF FIELD WORK PERFORMED | |
| LAND SURVEY: 8/22/2018 | ROW STAKING: |

ILLINOIS DEPARTMENT OF TRANSPORTATION
PLAT OF HIGHWAYS
 FAP ROUTE 103 (IL 13/15)
 SECTION (27, 25, 38, 561) RS
 ST. CLAIR COUNTY
 JOB NO. R-98-009-17
 STATION 370+50 TO STATION 372+25

SCALE: 1" = 20'

ILLINOIS DEPARTMENT OF TRANSPORTATION
 OFFICE OF HIGHWAYS PROJECT IMPLEMENTATION/REGION 5/DISTRICT 8
 1102 EASTPORT PLAZA DRIVE
 COLLINSVILLE, ILLINOIS 62234-6198

| F.A.P. R.T.E. | SECTION | COUNTY | TOTAL SHEETS | SHEET NO. |
|---------------|----------------------|-----------|--------------|-----------|
| 103 | (27, 25, 38, 561) RS | ST. CLAIR | 87 | 30 |

CONTRACT NO. 76J16

FED. ROAD DIST. NO. 8 ILLINOIS FED. AID PROJECT