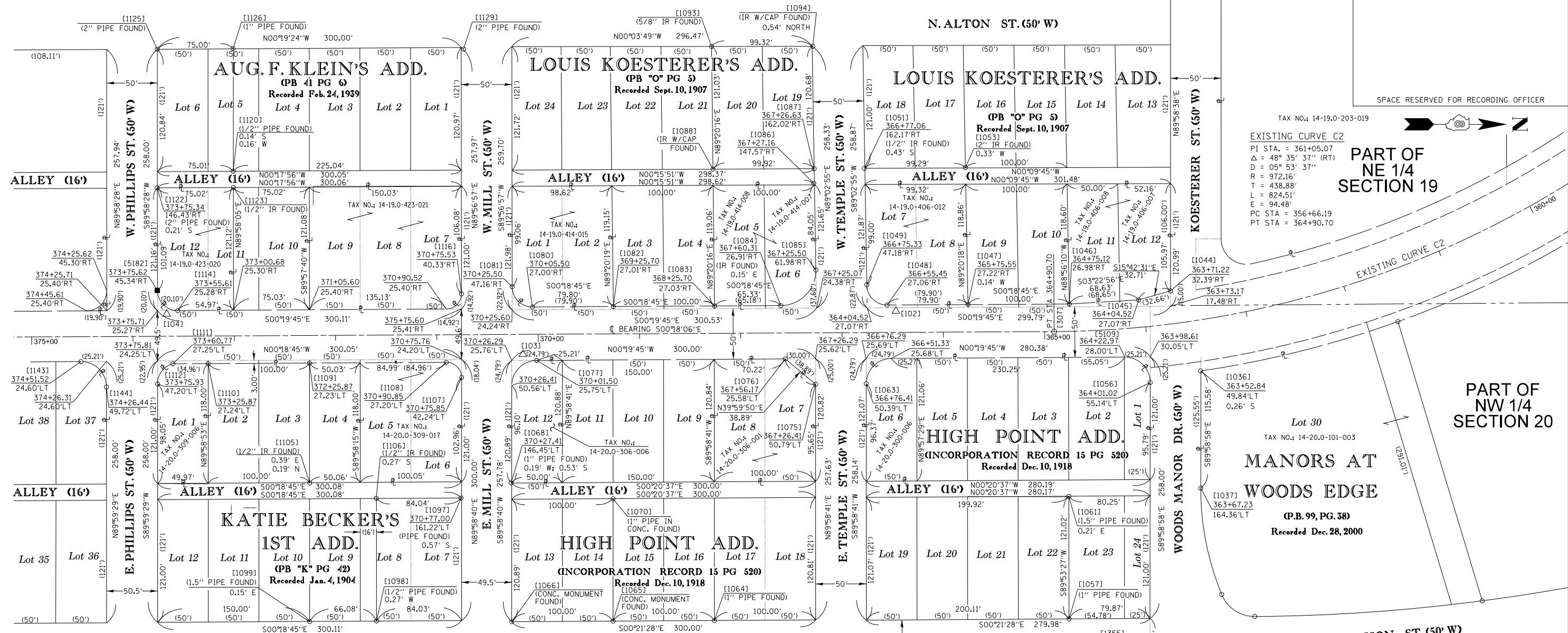


SEE LEGENDS, TOPOGRAPHIC STATEMENT, SURVEYORS NOTE(S) AND BASIS OF COORDINATES & BEARINGS STATEMENT ON SHEET 2

BLOCK DETAIL



SPACE RESERVED FOR RECORDING OFFICER

TAX NO.: 14-19-0-203-019

EXISTING CURVE C2
 PI STA. = 361+05.07
 Δ = 48° 35' 37" (RT)
 D = 05° 53' 37"
 R = 972.16'
 L = 438.88'
 T = 824.51'
 E = 94.48'
 PC STA = 356+66.19
 PT STA = 364+90.70

PART OF NE 1/4 SECTION 19

PART OF NW 1/4 SECTION 20

MANORS AT WOODS EDGE
 (P.B. 99, PG. 38)
 Recorded Dec. 28, 2000

[PNT #]/DESCRIPTION	STATION	OFFSET	NORTH	EAST
[1036]/(5/8") IR FOUND	363+52.84	49.84'LT	642,668.9190	370,607.2010
[1037]/(1/2") IR W/CAP FOUND	363+67.23	164.36'LT	642,669.0386	370,722.8271
[1044]/(5/8") IR W/ALUMINUM ROW CAP FOUND	363+71.22	32.39'RT	642,639.2640	370,528.2960
[1045]/(5/8") IR W/ALUMINUM ROW CAP FOUND	364+04.52	27.07'RT	642,607.7760	370,537.1520
[1046]/(5/8") IR W/ALUMINUM ROW CAP FOUND	364+75.12	26.98'RT	642,539.2696	370,541.2005
[1047]/(5/8") IR W/CAP FOUND	365+75.55	27.22'RT	642,439.2680	370,541.6050
[1048]/(5/8") IR W/ALUMINUM ROW CAP FOUND	366+55.45	27.06'RT	642,359.3723	370,542.1819
[1049]/(5/8") IR W/ALUMINUM ROW CAP FOUND	366+75.33	47.18'RT	642,339.3926	370,522.1731
[1051]/(1/2") IR FOUND	366+77.06	162.17'RT	642,337.0550	370,407.1890
[1053]/(1/2") IR FOUND			642,436.7630	370,406.5730
[1056]/(5/8") IR W/ALUMINUM ROW CAP FOUND	364+01.02	55.14'LT	642,619.1610	370,618.6450
[1057]/(1") PIPE FOUND			642,538.7870	370,731.1270
[1061]/(1.5") PIPE FOUND			642,538.7870	370,731.1270
[1063]/(5/8") IR W/ALUMINUM ROW CAP FOUND	366+76.41	50.39'LT	642,338.8228	370,619.7460
[1065]/CONC. MONUMENT FOUND			642,088.9159	370,854.1143
[1066]/CONC. MONUMENT FOUND			641,989.1710	370,854.7370
[1068]/1" PIPE FOUND	370+27.41	146.45'LT	641,988.3310	370,717.6540
[1070]/1" PIPE FOUND			642,088.8970	370,733.3840
[1075]/(5/8") IR W/ALUMINUM ROW CAP FOUND	367+26.41	50.79'LT	642,288.8230	370,620.4020
[1076]/(5/8") IR W/ALUMINUM ROW CAP FOUND	367+56.11	25.58'LT	642,258.9340	370,595.3530
[1077]/COTTON GIN SPIKE FND	370+01.50	25.75'LT	642,013.6079	370,596.8158
[1080]/(5/8") IR W/ALUMINUM ROW CAP FOUND	370+05.50	27.00'RT	642,009.3254	370,544.0915
[1081]/(5/8") IR W/ALUMINUM ROW CAP FOUND	370+25.50	47.16'RT	641,989.2216	370,524.0316

[PNT #]/DESCRIPTION	STATION	OFFSET	NORTH	EAST
[1082]/(5/8") IR W/ALUMINUM ROW CAP FOUND	369+25.70	27.01'RT	642,089.1242	370,543.6562
[1083]/(5/8") IR W/ALUMINUM ROW CAP FOUND	368+25.70	27.03'RT	642,189.1229	370,543.1107
[1084]/(5/8") IR FOUND	367+60.31	26.91'RT	642,254.5140	370,542.8850
[1085]/(5/8") IR FOUND	367+25.50	61.98'RT	642,289.1443	370,507.6331
[1086]/AXLE FOUND	367+27.16	147.57'RT	642,287.0280	370,422.0580
[1087]/(5/8") IR W/CAP FOUND	367+26.63	162.02'RT	642,287.4830	370,407.5970
[1088]/IR W/CAP FOUND			642,187.5618	370,408.0578
[1093]/(5/8") IR FOUND			642,186.1630	370,287.0400
[1094]/IR W/CAP FOUND			642,286.0170	370,286.9290
[1097]/(1/2") PIPE FOUND	370+77.00	161.22'LT	641,938.8240	370,732.6810
[1098]/(1/2") PIPE FOUND			641,855.4070	370,853.8440
[1099]/(1.5") PIPE FOUND			641,789.3310	370,854.6210
[1105]/(1/2") IR FOUND			641,789.4780	370,717.8560
[1106]/(1/2") IR FOUND			641,855.0800	370,733.0180
[1107]/(5/8") IR W/ALUMINUM ROW CAP FOUND	370+75.85	42.24'LT	641,939.3470	370,613.6939
[1108]/(5/8") IR W/ALUMINUM ROW CAP FOUND	370+90.85	27.20'LT	641,924.2671	370,598.7361
[1109]/(5/8") IR W/ALUMINUM ROW CAP FOUND	372+25.87	27.23'LT	641,789.2470	370,599.4727
[1110]/IR W/CAP FOUND	373+25.87	27.24'LT	641,689.2482	370,600.0182
[1111]/(5/8") IR W/ALUMINUM ROW CAP FOUND	373+60.77	27.25'LT	641,654.3499	370,600.2086
[1112]/(5/8") IR W/ALUMINUM ROW CAP FOUND	373+75.93	47.20'LT	641,639.2980	370,620.2407
[1114]/(5/8") IR FOUND	373+55.61	25.28'RT	641,659.2310	370,547.6535
[1116]/(5/8") IR FOUND	370+75.53	40.33'RT	641,939.2279	370,531.1243
[1120]/(1/2") PIPE FOUND			641,713.9190	370,410.0790
[1122]/(1/2") PIPE FOUND	373+75.34	146.43'RT	641,638.8640	370,426.6100
[1123]/(1/2") IR FOUND			641,714.0922	370,426.2180
[1125]/(1/2") PIPE FOUND			641,639.0160	370,289.7690
[1126]/(1") PIPE FOUND			641,713.8150	370,289.1370
[1512]/IR SET-EXISTING ROW	373+75.62	45.34'RT	641,639.1223	370,527.6947

SEE COORDINATE TABLE ON SHEET 2 FOR I.D.O.T. PROVIDED CONTROL AND ALIGNMENTS.

STATE OF ILLINOIS)
) SS
 COUNTY OF WASHINGTON)

I, JACK A. GELSO, AN ILLINOIS PROFESSIONAL LAND SURVEYOR, CERTIFY THAT I HAVE SURVEYED THE PLAT OF HIGHWAY SECTION (27, 25, 38, 561) RS ST. CLAIR COUNTY JOB NO. R-98-009-17 FOR THE PROPOSED PARCELS TO BE ACQUIRED BY THE STATE OF ILLINOIS, DEPARTMENT OF TRANSPORTATION, SHOWN HEREON.

DATED 12/6/2018

JACK A. GELSO, PLS NO. 3786
 LICENSE EXPIRATION DATE: 11/30/2020



API Survey LLC
 11145 N. Mockingbird Road
 P.O. Box 333
 Nashville, Illinois 62263
 Fax 618-478-9001
 Ph. 618-478-9000
 Email: gary@apisurvey.com
 IDPR Design Firm License No. 184-006526

ILLINOIS DEPARTMENT OF TRANSPORTATION PLAT OF HIGHWAYS				
FAP ROUTE 103 (IL 13/15) SECTION (27, 25, 38, 561) RS ST. CLAIR COUNTY JOB NO. R-98-009-17				
STATION 363+00 TO STATION 375+00				
SCALE: 1" = 100'				
SHEET 17 OF 21				
ILLINOIS DEPARTMENT OF TRANSPORTATION OFFICE OF HIGHWAYS PROJECT IMPLEMENTATION/REGION 5/DISTRICT 8 1102 EASTPORT PLAZA DRIVE COLLINSVILLE, ILLINOIS 62234-6198				
F.A.P. RTE.	SECTION	COUNTY	TOTAL SHEETS	SHEET NO.
103	(27, 25, 38, 561) RS	ST. CLAIR	87	41
COMPLETION DATE OF FIELD WORK PERFORMED				
LAND SURVEY: 8/22/2018		ROW STAKING:		
CONTRACT NO. 76J16				
FED. ROAD DIST. NO. 8 ILLINOIS FED. AID PROJECT				