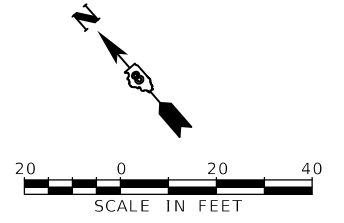
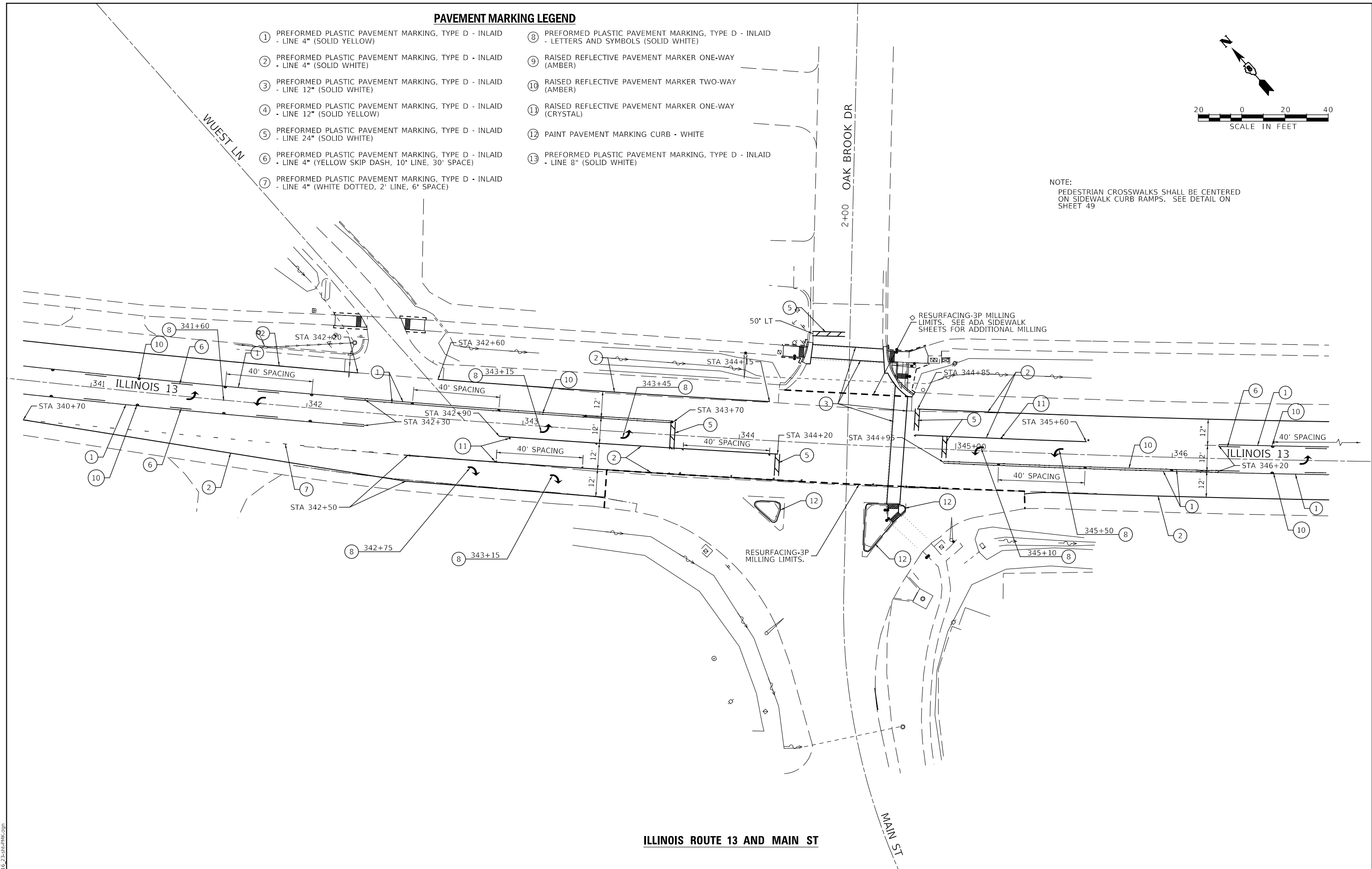


PAVEMENT MARKING LEGEND

- ① PREFORMED PLASTIC PAVEMENT MARKING, TYPE D - INLAID - LINE 4" (SOLID YELLOW)
- ② PREFORMED PLASTIC PAVEMENT MARKING, TYPE D - INLAID - LINE 4" (SOLID WHITE)
- ③ PREFORMED PLASTIC PAVEMENT MARKING, TYPE D - INLAID - LINE 12" (SOLID WHITE)
- ④ PREFORMED PLASTIC PAVEMENT MARKING, TYPE D - INLAID - LINE 12" (SOLID YELLOW)
- ⑤ PREFORMED PLASTIC PAVEMENT MARKING, TYPE D - INLAID - LINE 24" (SOLID WHITE)
- ⑥ PREFORMED PLASTIC PAVEMENT MARKING, TYPE D - INLAID - LINE 4" (YELLOW SKIP DASH, 10' LINE, 30' SPACE)
- ⑦ PREFORMED PLASTIC PAVEMENT MARKING, TYPE D - INLAID - LINE 4" (WHITE DOTTED, 2' LINE, 6' SPACE)
- ⑧ PREFORMED PLASTIC PAVEMENT MARKING, TYPE D - INLAID - LETTERS AND SYMBOLS (SOLID WHITE)
- ⑨ RAISED REFLECTIVE PAVEMENT MARKER ONE-WAY (AMBER)
- ⑩ RAISED REFLECTIVE PAVEMENT MARKER TWO-WAY (AMBER)
- ⑪ RAISED REFLECTIVE PAVEMENT MARKER ONE-WAY (CRYSTAL)
- ⑫ PAINT PAVEMENT MARKING CURB - WHITE
- ⑬ PREFORMED PLASTIC PAVEMENT MARKING, TYPE D - INLAID - LINE 8" (SOLID WHITE)



NOTE:
PEDESTRIAN CROSSWALKS SHALL BE CENTERED ON SIDEWALK CURB RAMPS. SEE DETAIL ON SHEET 49



ILLINOIS ROUTE 13 AND MAIN ST

MODEL: D:\m\16 73-2b\c\p\mk.dgn
FILE NAME: 76J16 73-2b\c\p\mk.dgn

USER NAME = gowens	DESIGNED - SCA-14	REVISED -
DRAWN - SCB-14	REVISED -	
PLOT SCALE = 40.0000 ' / in.	CHECKED - SCC-14	REVISED -
PLOT DATE = 2/12/2019	DATE - 2/12/2019	REVISED -

**STATE OF ILLINOIS
DEPARTMENT OF TRANSPORTATION**

**PAVEMENT MARKING DETAILS
ILLINOIS ROUTE 13 AND MAIN ST**

SCALE: 40.0000 ' / in. SHEET 1 OF 5 SHEETS STA. TO STA.

F.A.P. RTE.	SECTION	COUNTY	TOTAL SHEETS	SHEET NO.
103	(27,25,38,56)RS	ST. CLAIR	87	46
CONTRACT NO. 76J16				
ILLINOIS FED. AID PROJECT				