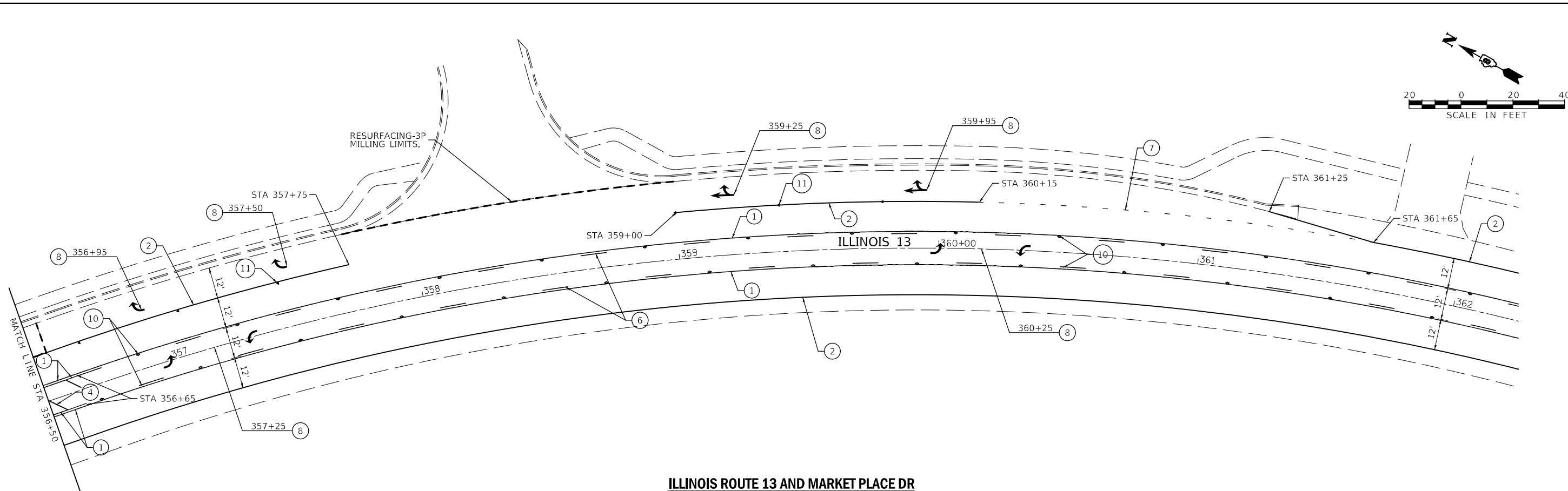
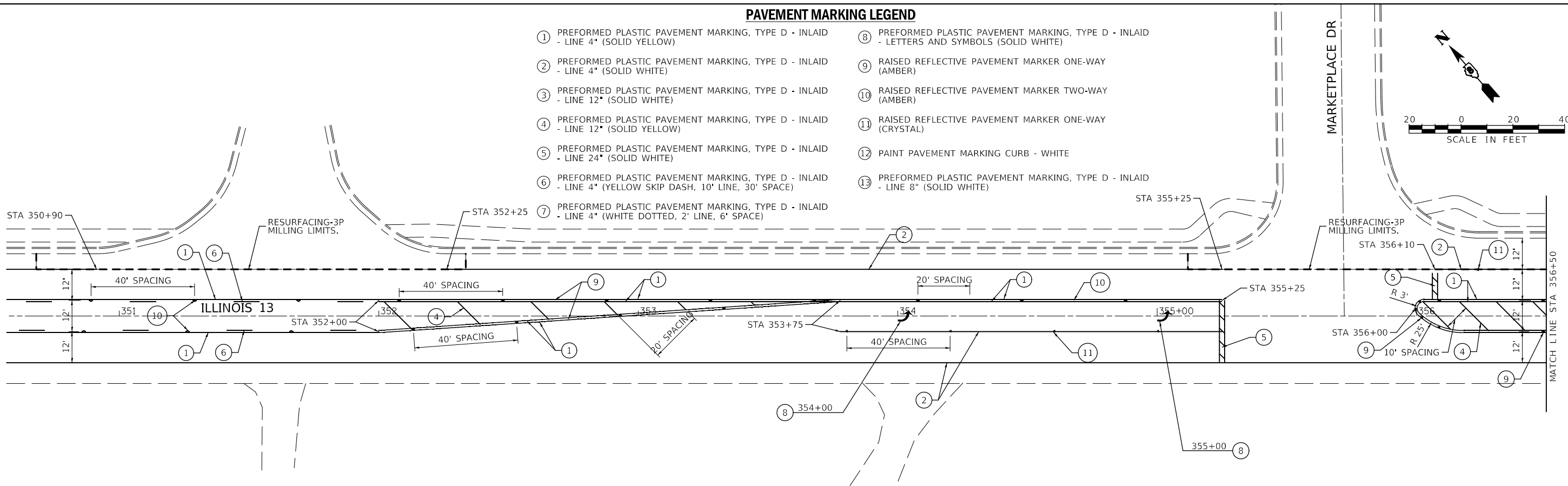


**PAVEMENT MARKING LEGEND**

- ① PREFORMED PLASTIC PAVEMENT MARKING, TYPE D - INLAID - LINE 4" (SOLID YELLOW)
- ② PREFORMED PLASTIC PAVEMENT MARKING, TYPE D - INLAID - LINE 4" (SOLID WHITE)
- ③ PREFORMED PLASTIC PAVEMENT MARKING, TYPE D - INLAID - LINE 12" (SOLID WHITE)
- ④ PREFORMED PLASTIC PAVEMENT MARKING, TYPE D - INLAID - LINE 12" (SOLID YELLOW)
- ⑤ PREFORMED PLASTIC PAVEMENT MARKING, TYPE D - INLAID - LINE 24" (SOLID WHITE)
- ⑥ PREFORMED PLASTIC PAVEMENT MARKING, TYPE D - INLAID - LINE 4" (YELLOW SKIP DASH, 10' LINE, 30' SPACE)
- ⑦ PREFORMED PLASTIC PAVEMENT MARKING, TYPE D - INLAID - LINE 4" (WHITE DOTTED, 2' LINE, 6' SPACE)
- ⑧ PREFORMED PLASTIC PAVEMENT MARKING, TYPE D - INLAID - LETTERS AND SYMBOLS (SOLID WHITE)
- ⑨ RAISED REFLECTIVE PAVEMENT MARKER ONE-WAY (AMBER)
- ⑩ RAISED REFLECTIVE PAVEMENT MARKER TWO-WAY (AMBER)
- ⑪ RAISED REFLECTIVE PAVEMENT MARKER ONE-WAY (CRYSTAL)
- ⑫ PAINT PAVEMENT MARKING CURB - WHITE
- ⑬ PREFORMED PLASTIC PAVEMENT MARKING, TYPE D - INLAID - LINE 8" (SOLID WHITE)



**ILLINOIS ROUTE 13 AND MARKET PLACE DR**

MODEL: D:\m16 76116 24-2019-PMK.dgn

USER NAME = gowens	DESIGNED - SCA-15	REVISED -
DRAWN - SCB-15	REVISED -	
PLOT SCALE = 40.0000 ' / in.	CHECKED - SCC-15	REVISED -
PLOT DATE = 2/12/2019	DATE - 2/12/2019	REVISED -

**STATE OF ILLINOIS  
DEPARTMENT OF TRANSPORTATION**

**PAVEMENT MARKING DETAILS  
ILLINOIS ROUTE 13 AND MARKET PLACE DR**

SCALE: 40.0000 ' / in. SHEET 2 OF 5 SHEETS STA. TO STA.

F.A.P. RTE.	SECTION	COUNTY	TOTAL SHEETS	SHEET NO.
103	(27,25,38,56)RS	ST. CLAIR	87	47
CONTRACT NO. 76116				
ILLINOIS		FED. AID PROJECT		